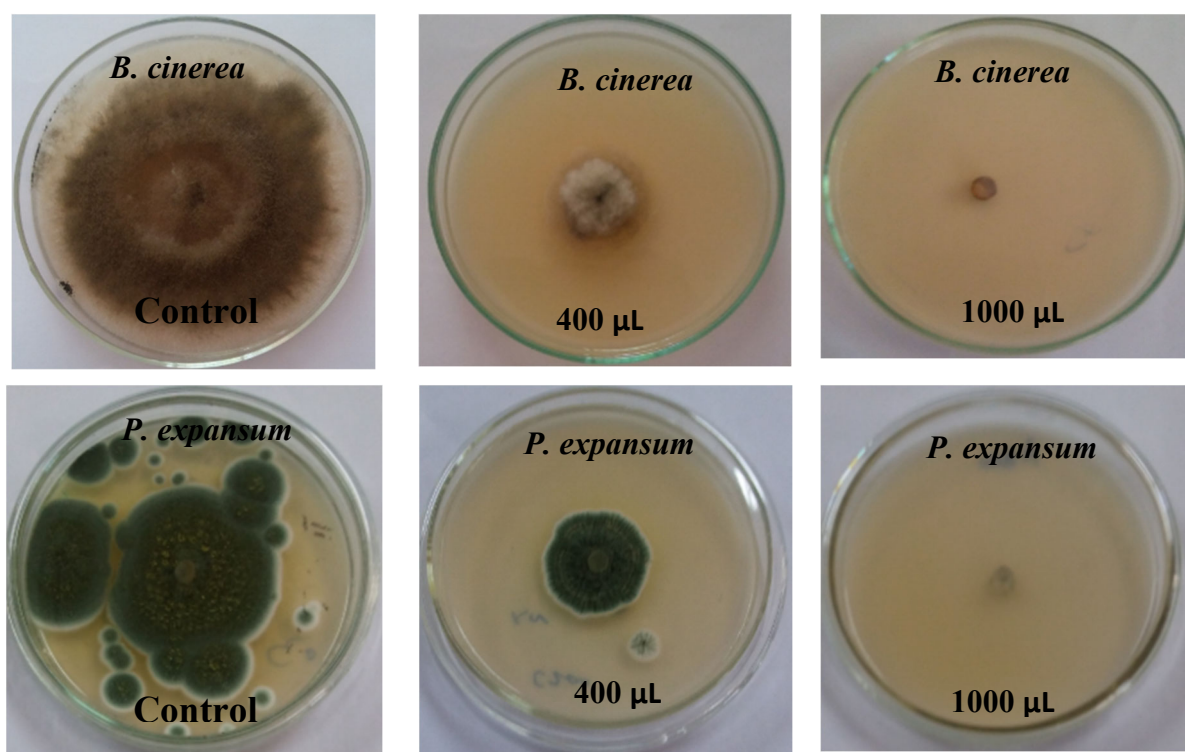


**Figure S1.** The effect of different concentrations of the *G. persica* extract (control, 400, and 1000  $\mu$ L) on the mycelial growth of *P. oryzae* and *A. niger*.



**Figure S2.** The effect of different concentrations of the *G. persica* extract (control, 400, and 1000  $\mu$ L) on the mycelial growth of *B. cinerea* and *P. expansum*.