

Supplemental data for

**Leaf plasmodesmata respond differently to TMV and TYLCV infection.**

Yaarit Kutsher, Dalia Evenor, Eduard Belausov, Moshe Lapidot, Moshe Reuveni

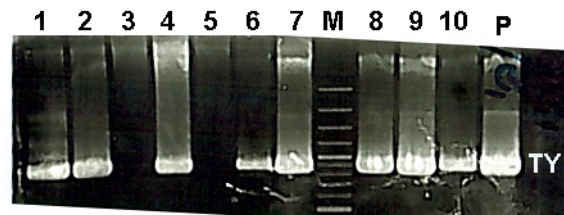
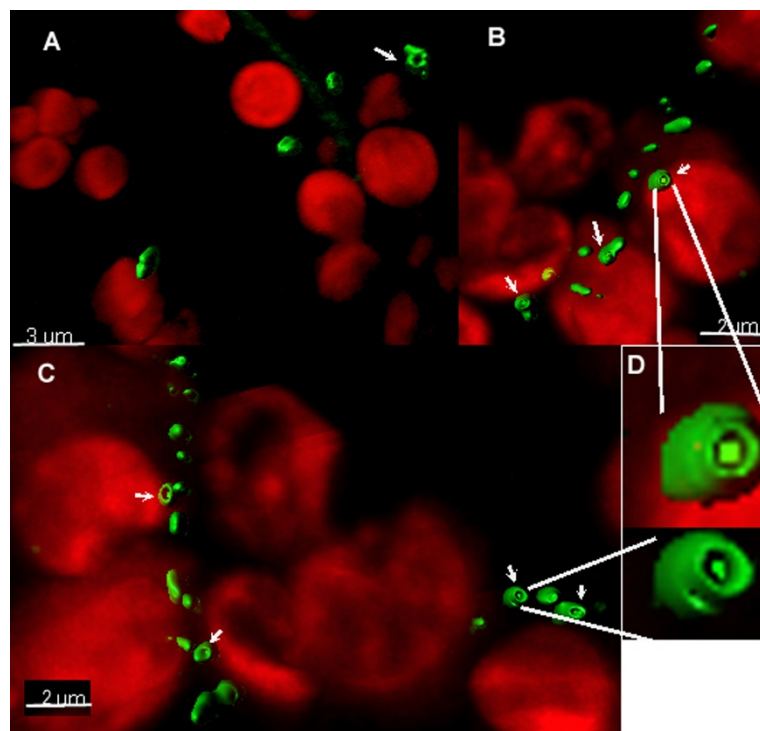


Figure S1: PCR analysis of tobacco plants infected with TYLCV. Tobacco plants that did not show any symptoms were tested for the presence of the TYLCV coat protein sequence. M = marker; P=plasmid control; lane 1-8 tobacco plant; lane 9-10 tomato plants showing symptoms of TYLCV.



**Figure S2:** Imaris image of PDL5-GFP decorated plasmodesmata. A, B, C show different cells with white arrows pointing to plasmodesmata with off-center desmotubule. D: close-up digital image of single plasmodesmata. The bar shows the distance in  $\mu\text{m}$ .