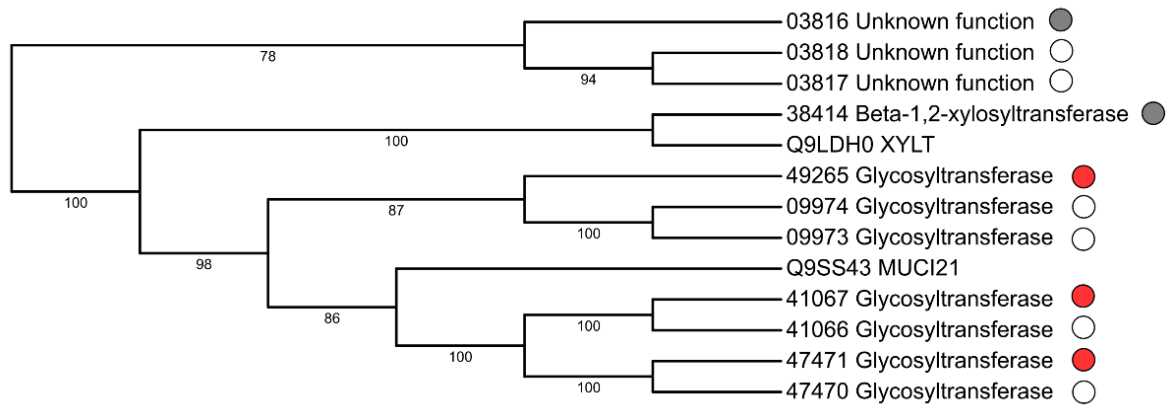


**Figure S1.** Phylogeny of potato glycosyltransferase 43 family (GT43) proteins and of a reference set of *Arabidopsis thaliana* and *Oryza sativa* GT43 proteins. The clades for GT43 functional subgroups are marked in colors. Potato proteins are indicated with circles according to the expression pattern of corresponding genes in *Pectobacterium atrosepticum*-infected vs. non-infected potato plants: red—upregulated; blue—downregulated; grey—non-DEG; empty—not expressed in our study. The UniProt IDs of non-potato species proteins and the corresponding taxa names are given in the leaf names. For potato proteins only parts of PGSC IDs are given; the “PGSC0003DMP4000” symbols, the constant part in the beginning of all presented PGSC protein IDs, were omitted for the sake of brevity.



**Figure S2.** Phylogeny of potato glycosyltransferase 61 family (GT61) proteins and of a reference set of *Arabidopsis thaliana* GT61 proteins. Potato proteins are indicated with circles according to the expression pattern of corresponding genes in *Pectobacterium atrosepticum*-infected vs. non-infected potato plants: red—upregulated; blue—downregulated; grey—non-DEG; empty—not expressed in our study. The UniProt IDs of *A. thaliana* proteins are given in the leaf names. For potato proteins only parts of PGSC IDs are given; the “PGSC0003DMP4000” symbols, the constant part in the beginning of all presented PGSC protein IDs, were omitted for the sake of brevity.

