

Supplementary Materials

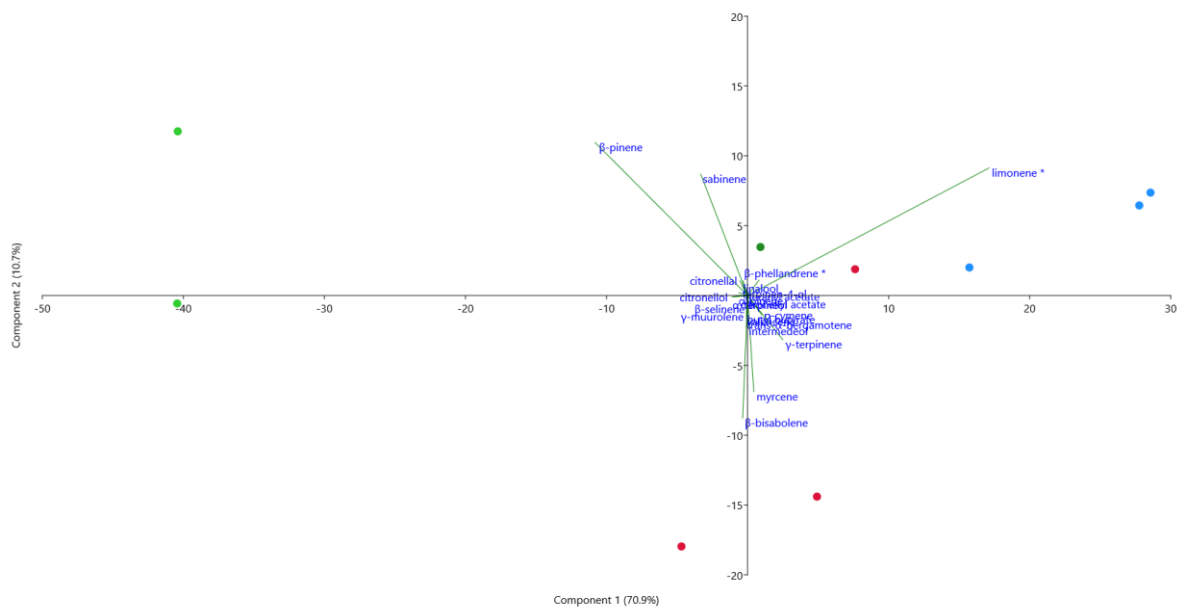


Figure S1. Variable contributions in PCA of peel oils. Green: hys: *C. hystrix*, mic: *C. micrantha*, mapt: *C. macroptera*; Red: lat: *C. latipes*, ich: *C. ichangensis*; Blue: wil: *C. wilsonii*, jun: *C. junos*, maph: *C. macrophylla*.

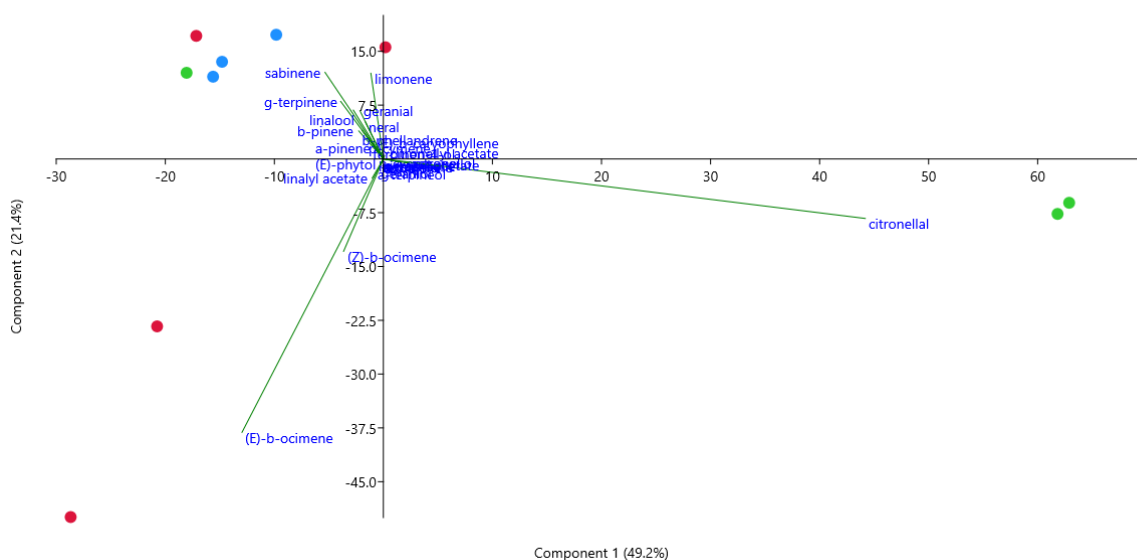


Figure S2. Variable contributions in PCA of leaf oils. Green: hys: *C. hystrix*, mic: *C. micrantha*, mapt: *C. macroptera*; Red: lat: *C. latipes*, ich: *C. ichangensis*; Blue: wil: *C. wilsonii*, jun: *C. junos*, maph: *C. macrophylla*.