

**Table S1.** Number of common, 2x- and 4x-specific pre-miRNAs identified in each species studied here.

<b>Species</b>	<b>Tissue</b>	<b>2x-specific</b>	<b>common 2x-4x</b>	<b>4x-specific</b>
<i>M. alba</i>	leaves	2	30	6
<i>A. thaliana</i>	sepals	17	89	12
<i>S. commersonii</i>	leaves	11	118	46
<i>B. rapa</i>	floral buds	67	154	41
<i>I. indigotica</i>	leaves	18	56	11

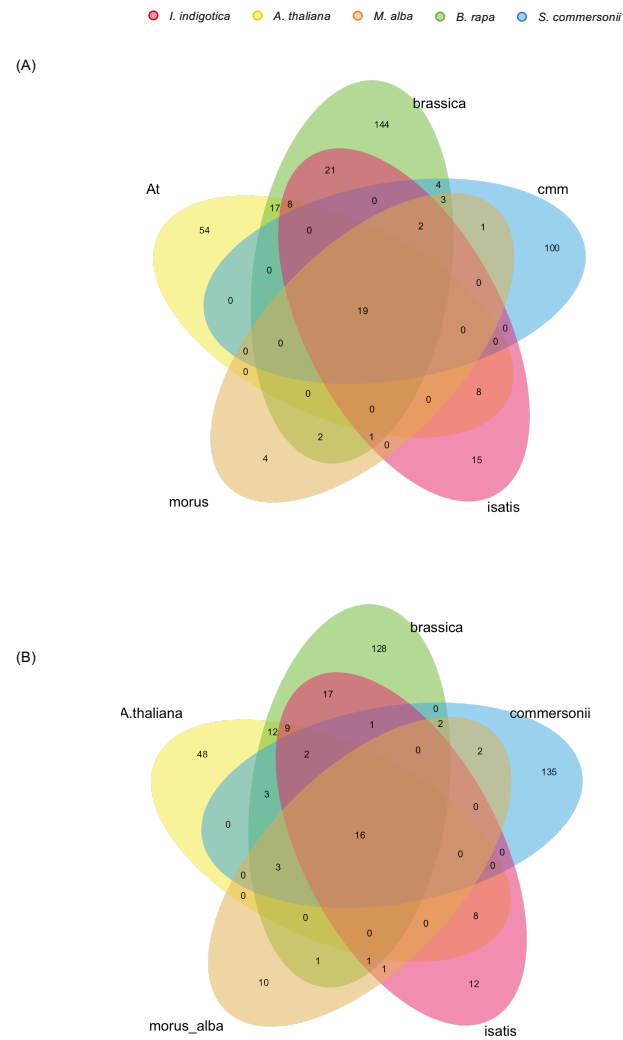


Figure S1

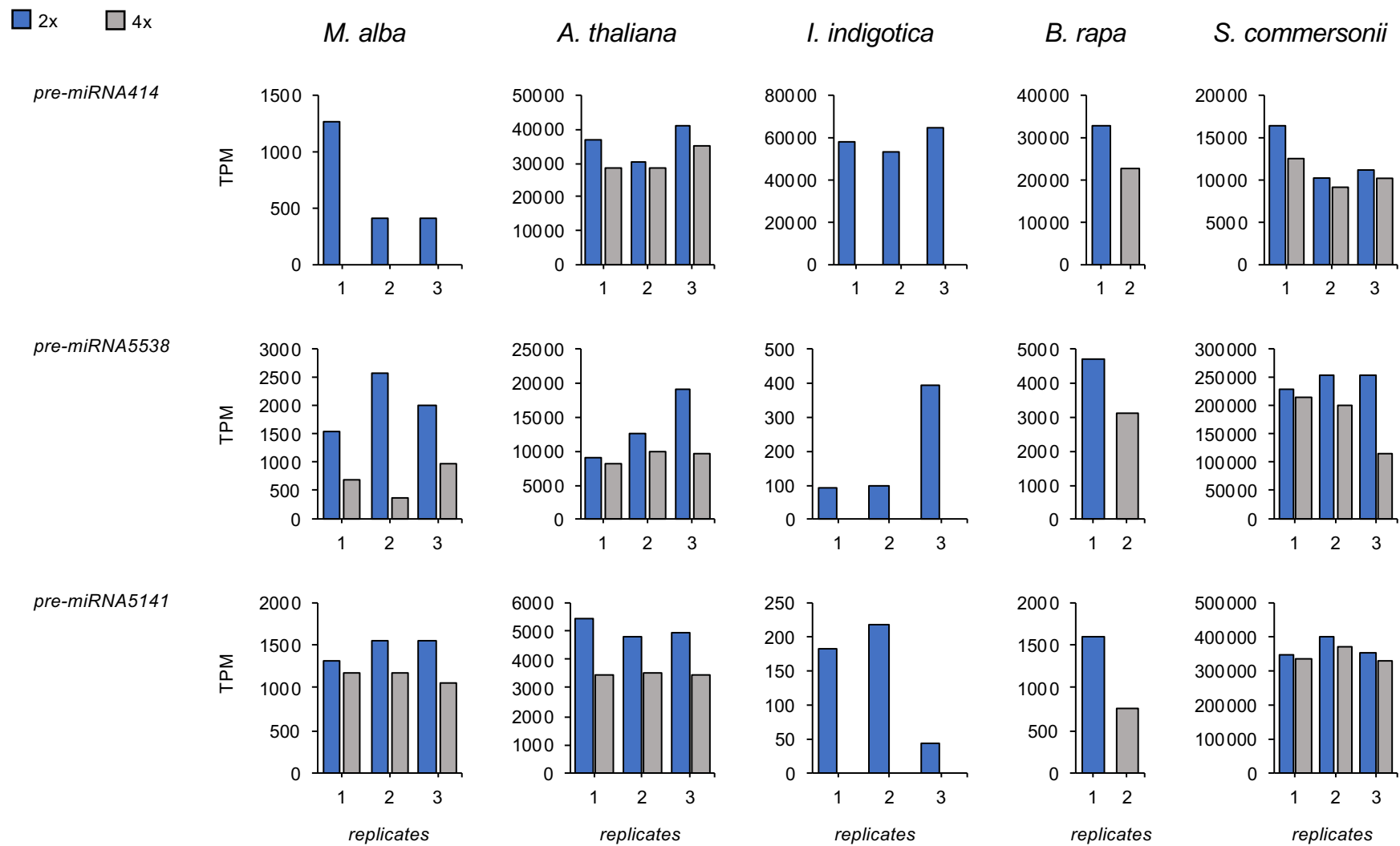
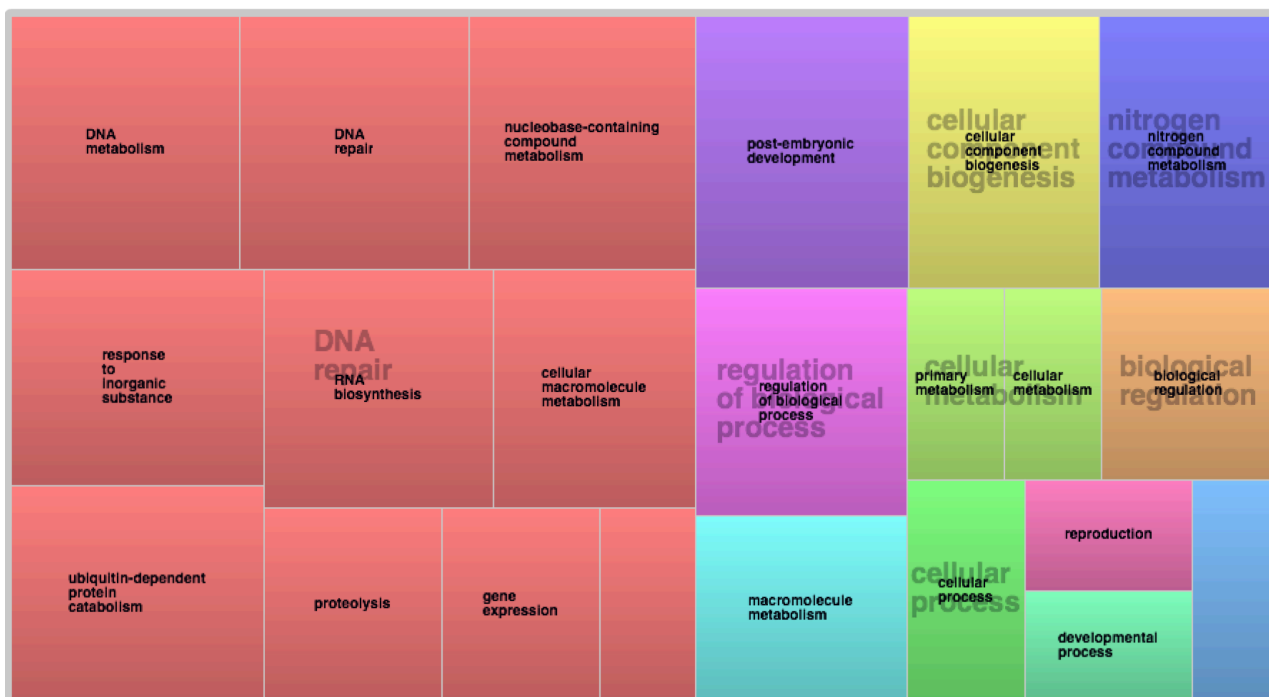


Figure S2

A)



B)



C)



Figure S3

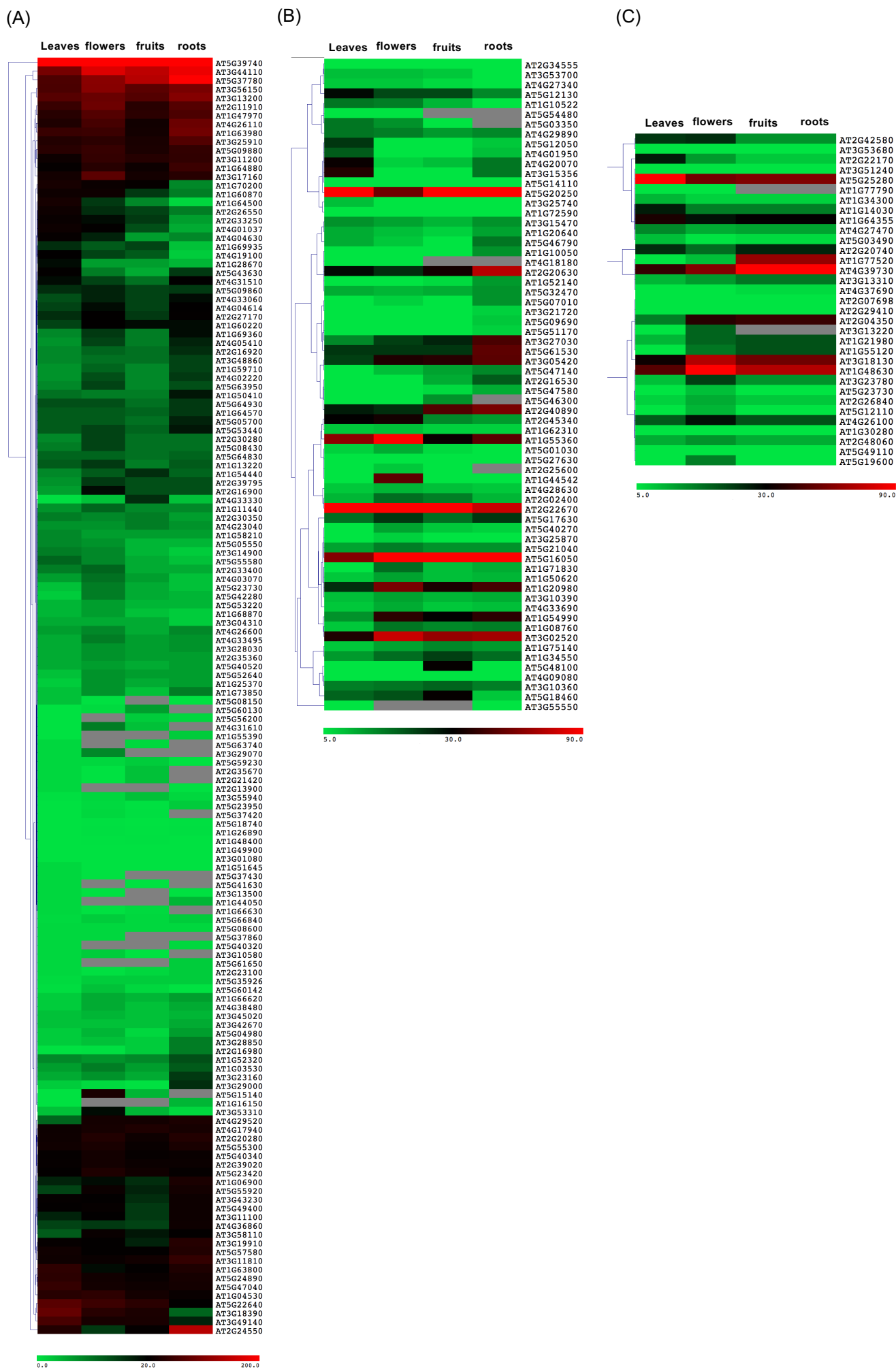


Figure S4

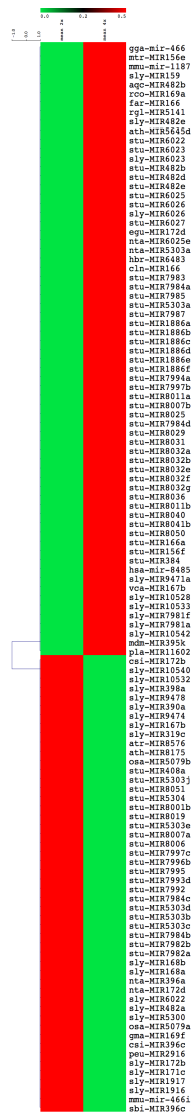


Figure S5

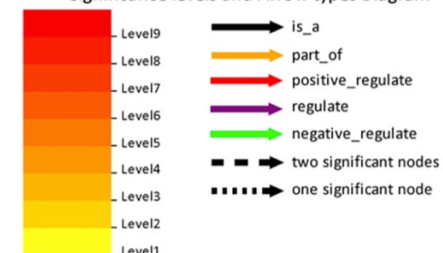
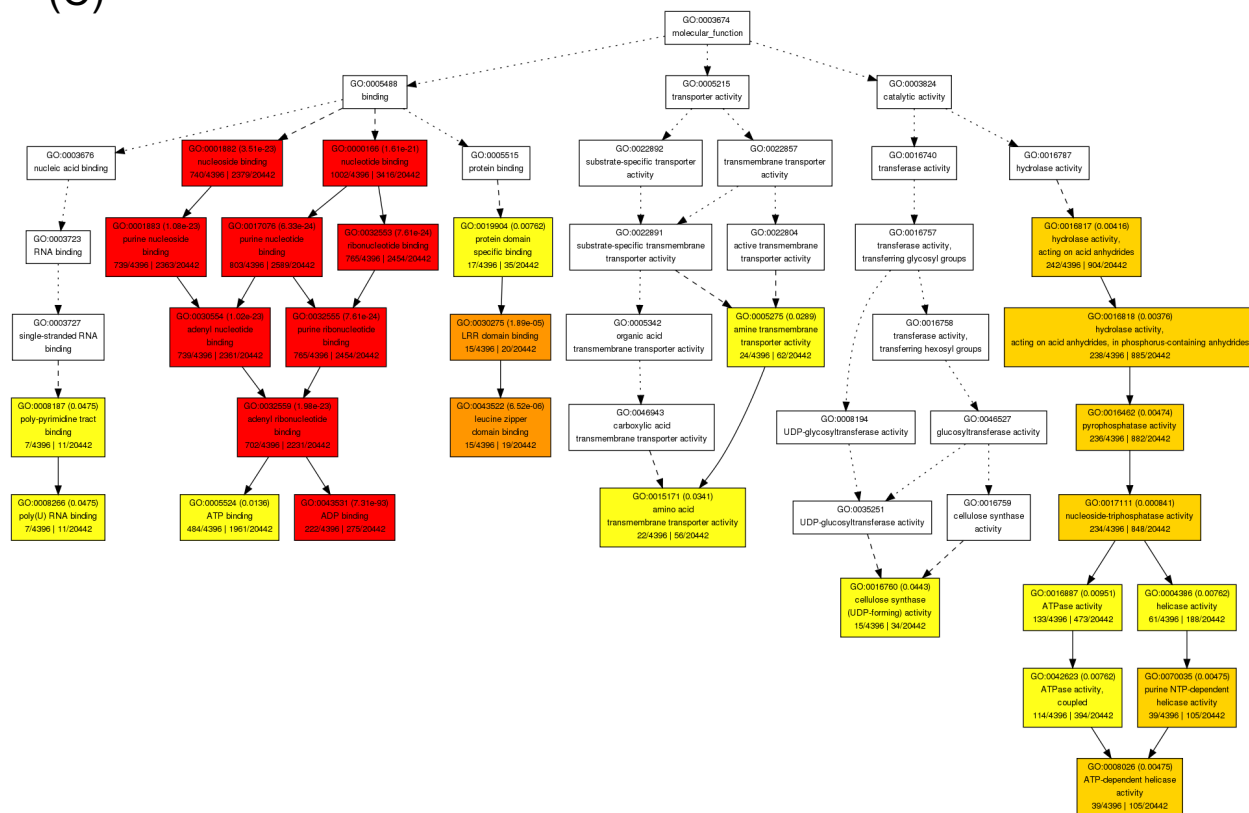
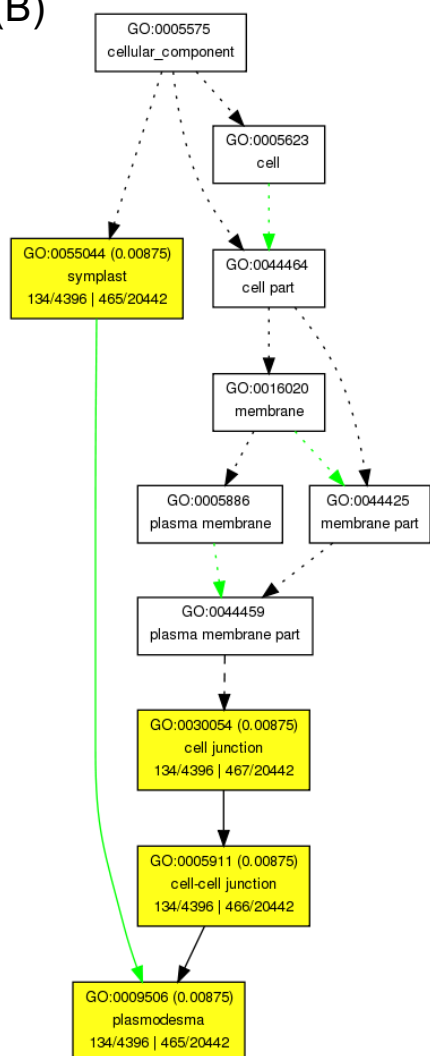
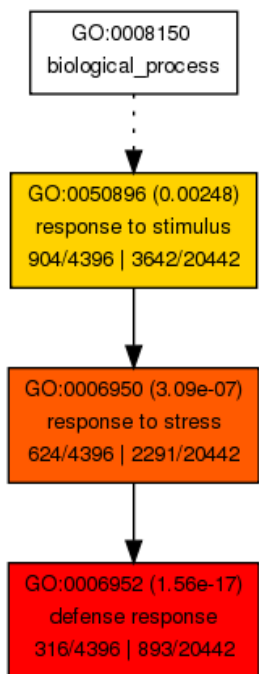
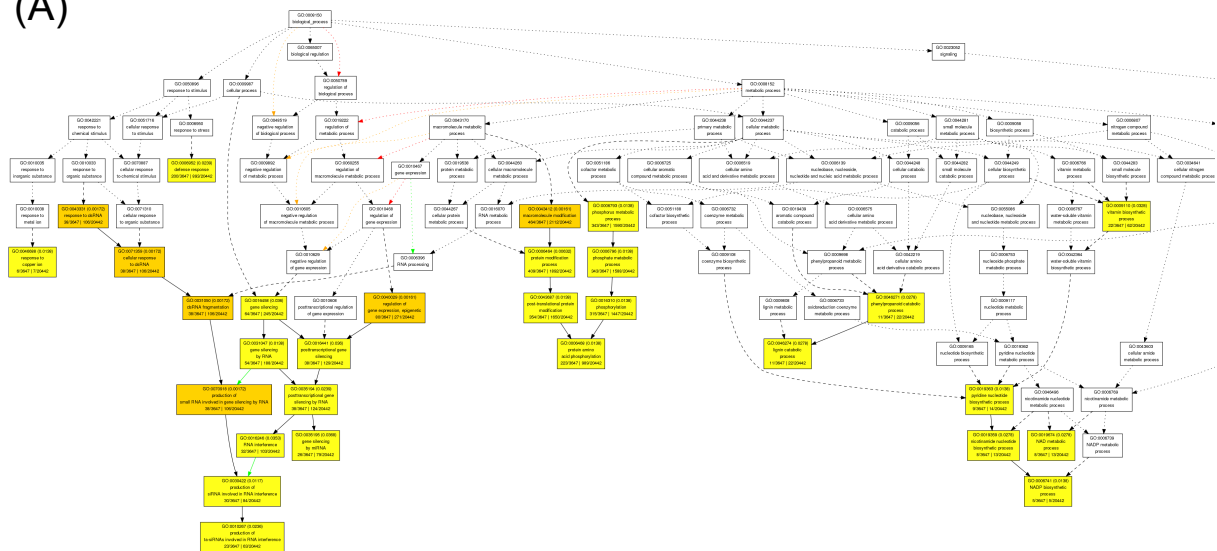
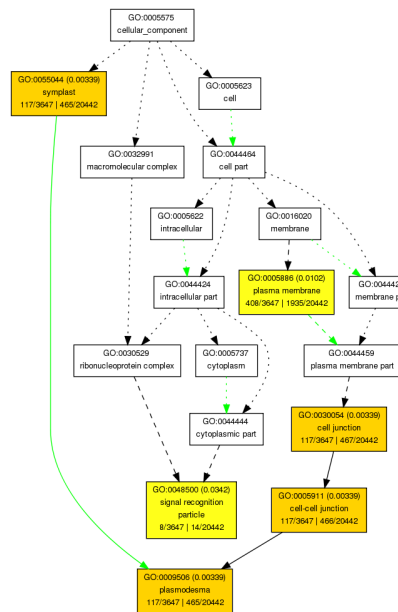


Figure S6

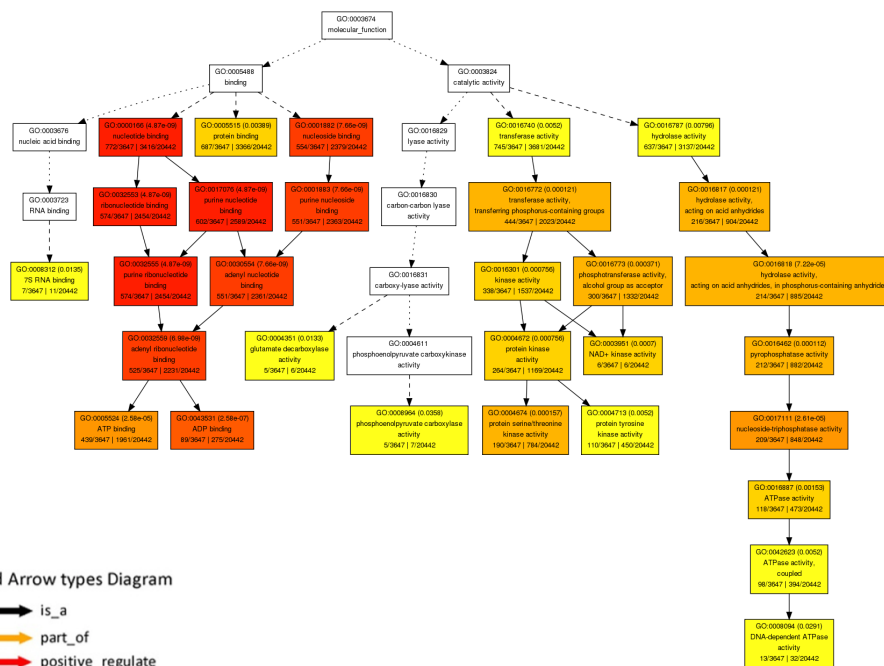
(A)



(B)



(C)



Significance levels and Arrow types Diagram

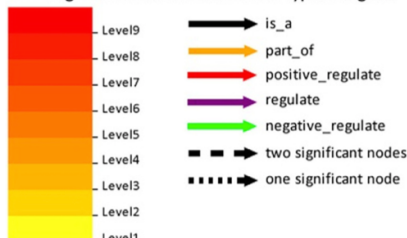


Figure S7