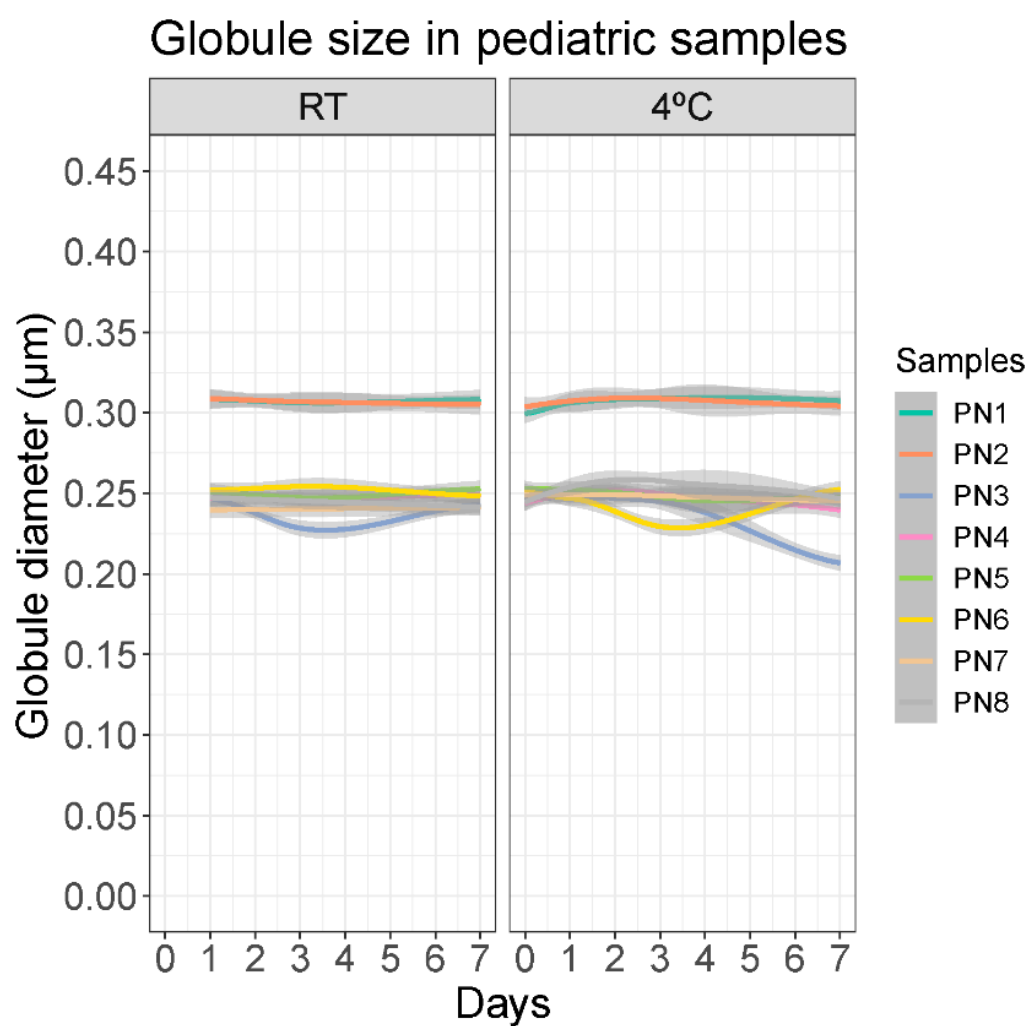
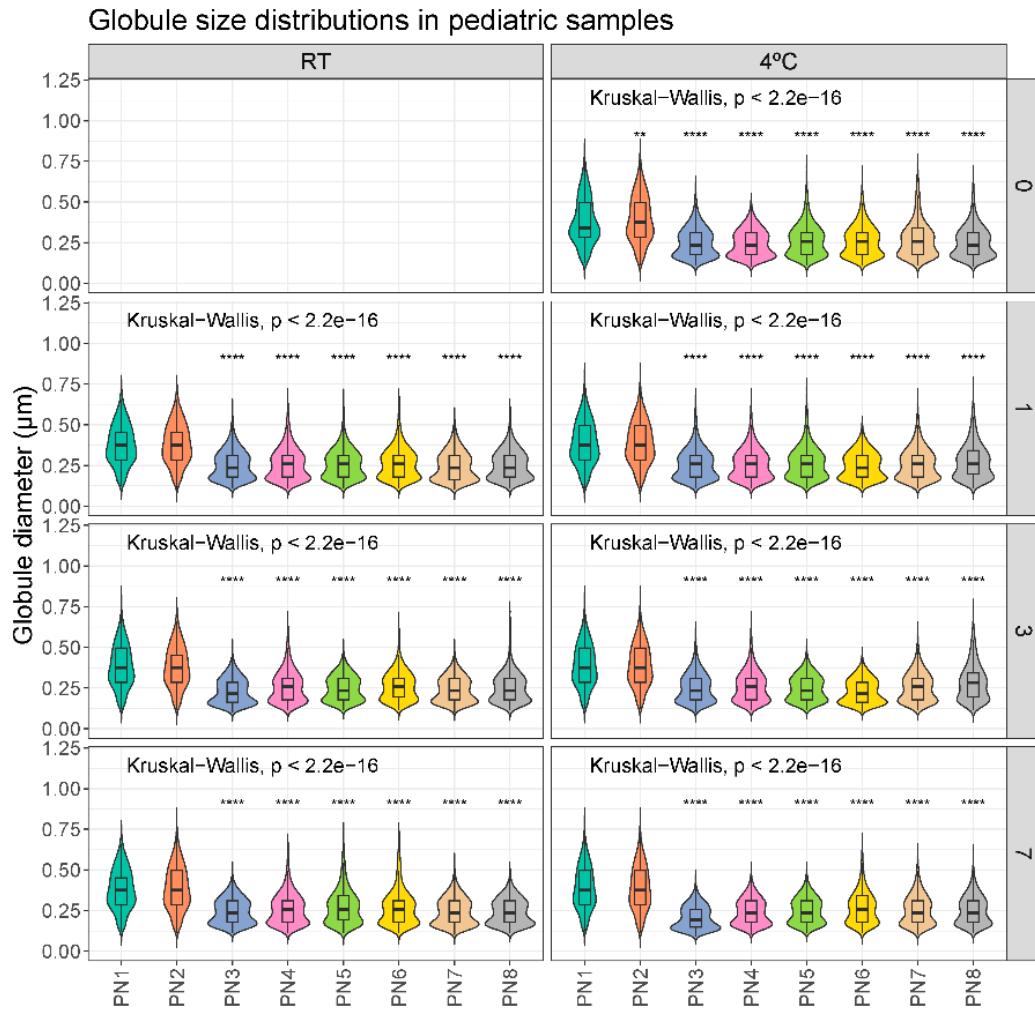


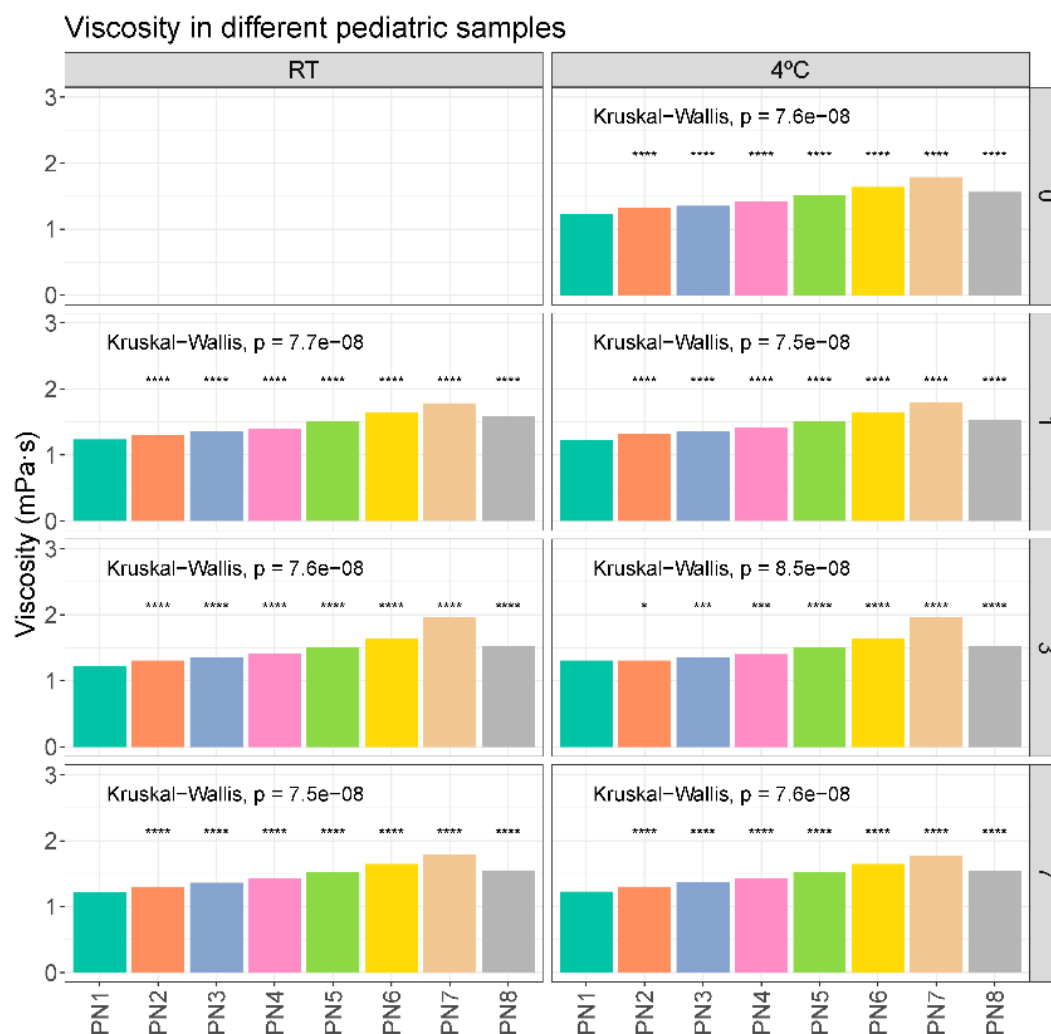
## Supplementary Materials



**Figure S1.** Representation of how the mean globule size evolves over the study time (0, 1, 3 and 7 days) for each sample and storage protocol (RT: Room temperature, 4°C: refrigerator).



**Figure S2.** Distribution of globule size (µm) in different pediatric parenteral nutrition (PN) solutions on different days (0, 1, 3, 7) and temperatures (RT, 4°C). RT: room temperature. \*: p.adj < 0.05; \*\*: p.adj < 0.001; \*\*\*: p.adj < 0.0001; \*\*\*\*: p.adj < 0.00001.



**Figure S3.** Viscosity (mPa·s) evolution in different pediatric parenteral nutrition solutions on different days (0, 1, 3, 7) and temperatures (RT, 4°C.). RT: room temperature. Each measurement is the result of the average of 6 determinations for viscosity. \*:  $p_{\text{adj}} < 0.05$ ; \*\*:  $p_{\text{adj}} < 0.001$ ; \*\*\*:  $p_{\text{adj}} < 0.0001$ ; \*\*\*\*:  $p_{\text{adj}} < 0.00001$ .