

## Supporting information

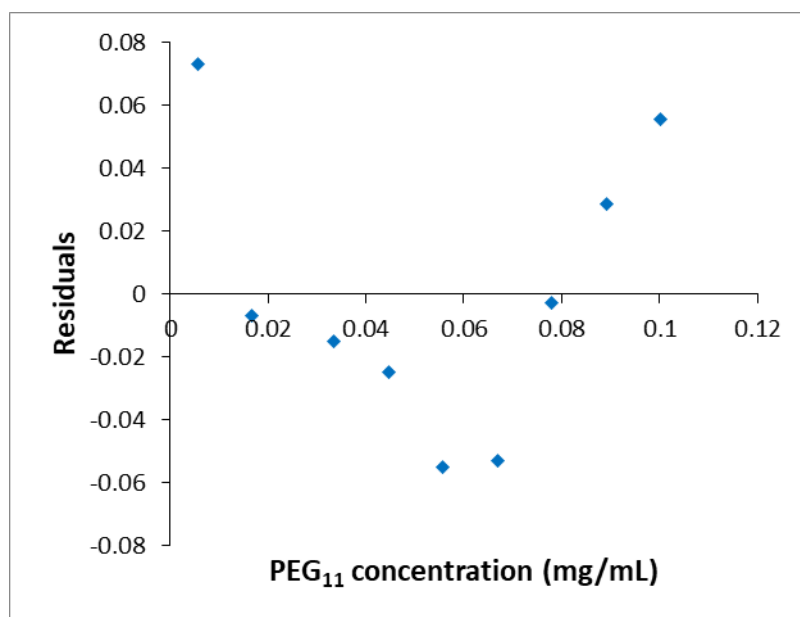
### Quantification of polyethylene glycol 400 excreted in the urine by MALDI-TOF mass spectrometry

Ákos Kuki<sup>1</sup>, Mahir Hashimov<sup>1,2</sup>, Tibor Nagy<sup>1</sup>, Csaba Tóth<sup>3</sup>, Miklós Zsuga<sup>1</sup>, Sándor Kéki<sup>1,\*</sup>

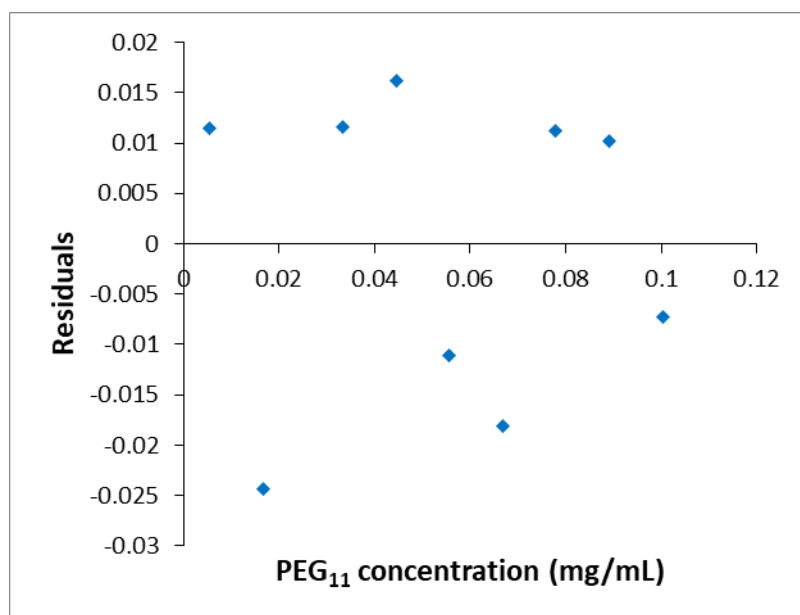
<sup>1</sup>*Department of Applied Chemistry, Faculty of Science and Technology, University of Debrecen, Egyetem tér 1, H-4032 Debrecen, Hungary*

<sup>2</sup>*Doctoral School of Chemistry, University of Debrecen, Egyetem tér 1, H-4032 Debrecen, Hungary*

<sup>3</sup>*Today's Life Science and Research Kft., Bulcsú utca 20/A, H-2120 Dunakeszi, Hungary*



**Figure S1.** Residual plot of the linear regression model of the calibration data for PEG<sub>11</sub>.



**Figure S2.** Residual plot of the quadratic regression model of the calibration data for PEG<sub>11</sub>.