

Figure S1. In vitro loading and release of GEM-carried PD-1 NVs. (A) The capacity of GEM-loaded PD-1 NVs by electroporation (n = 3). (B) The release profiles of GEM from PD-1 NVs at different time (1 h, 4 h, 8 h, 16 h, 24 h) (n = 3).

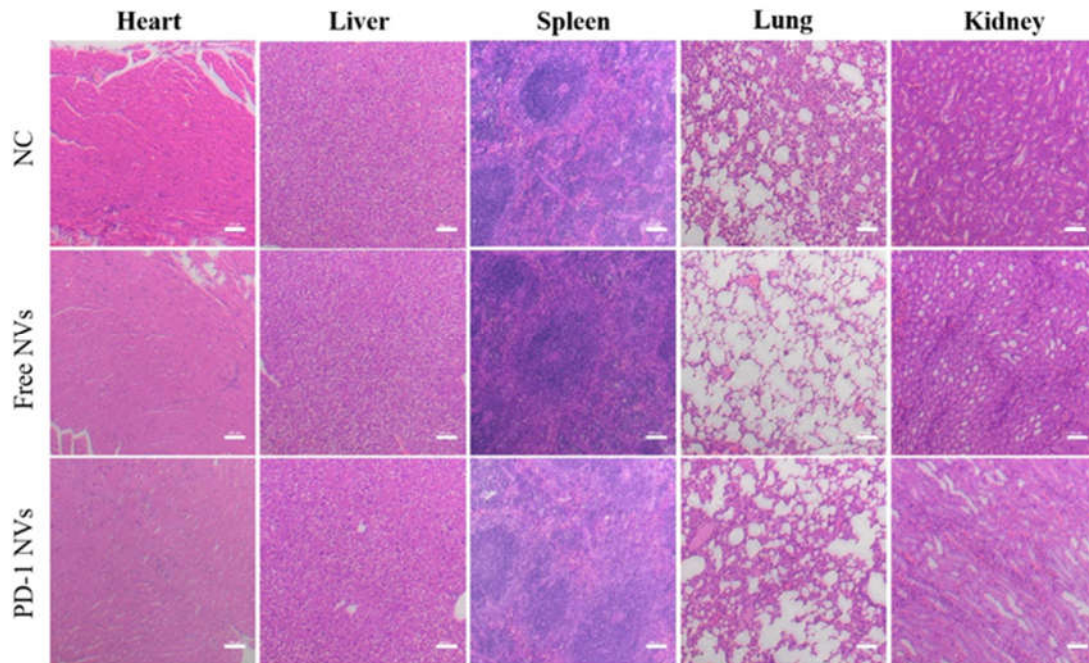


Figure S2. In vivo toxicity tests for PD-1 NVs. Histological images for H&E staining obtained from the lung, heart, kidney, spleen and liver of mice treated with different NVs at day 20 post-injection. Scale bar: 100 μ m.