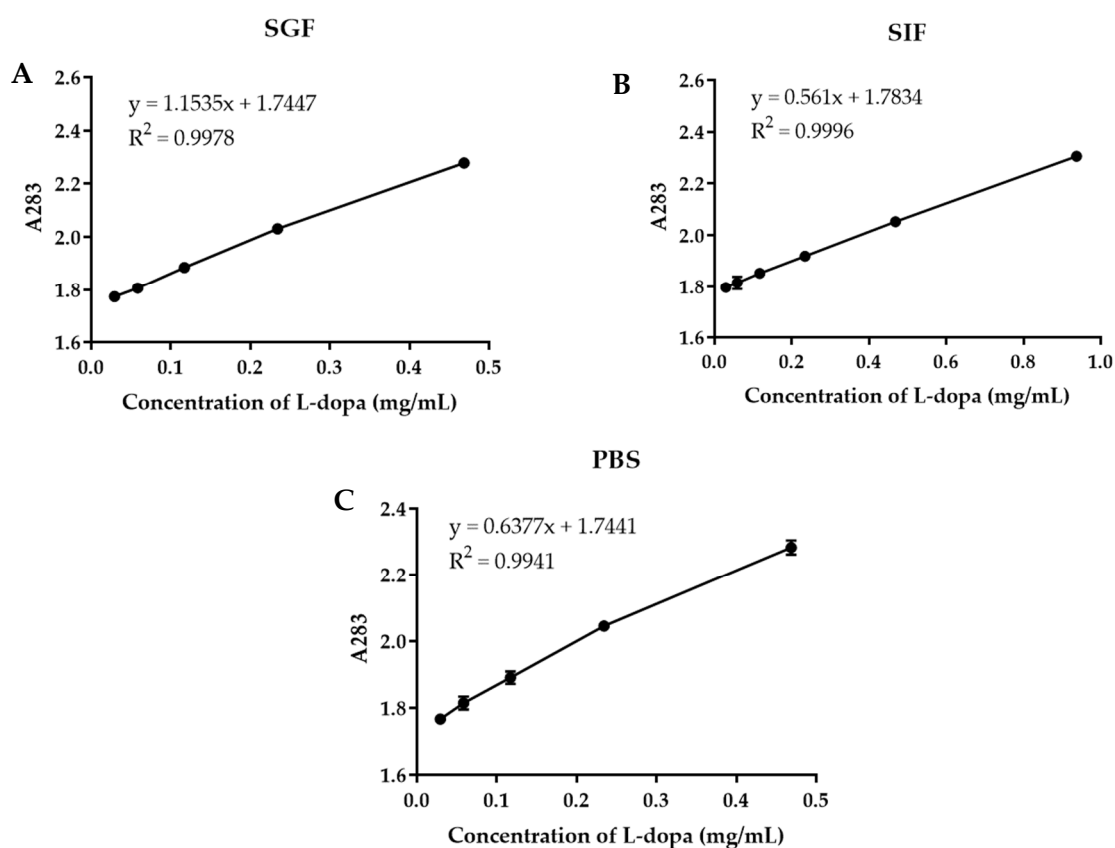


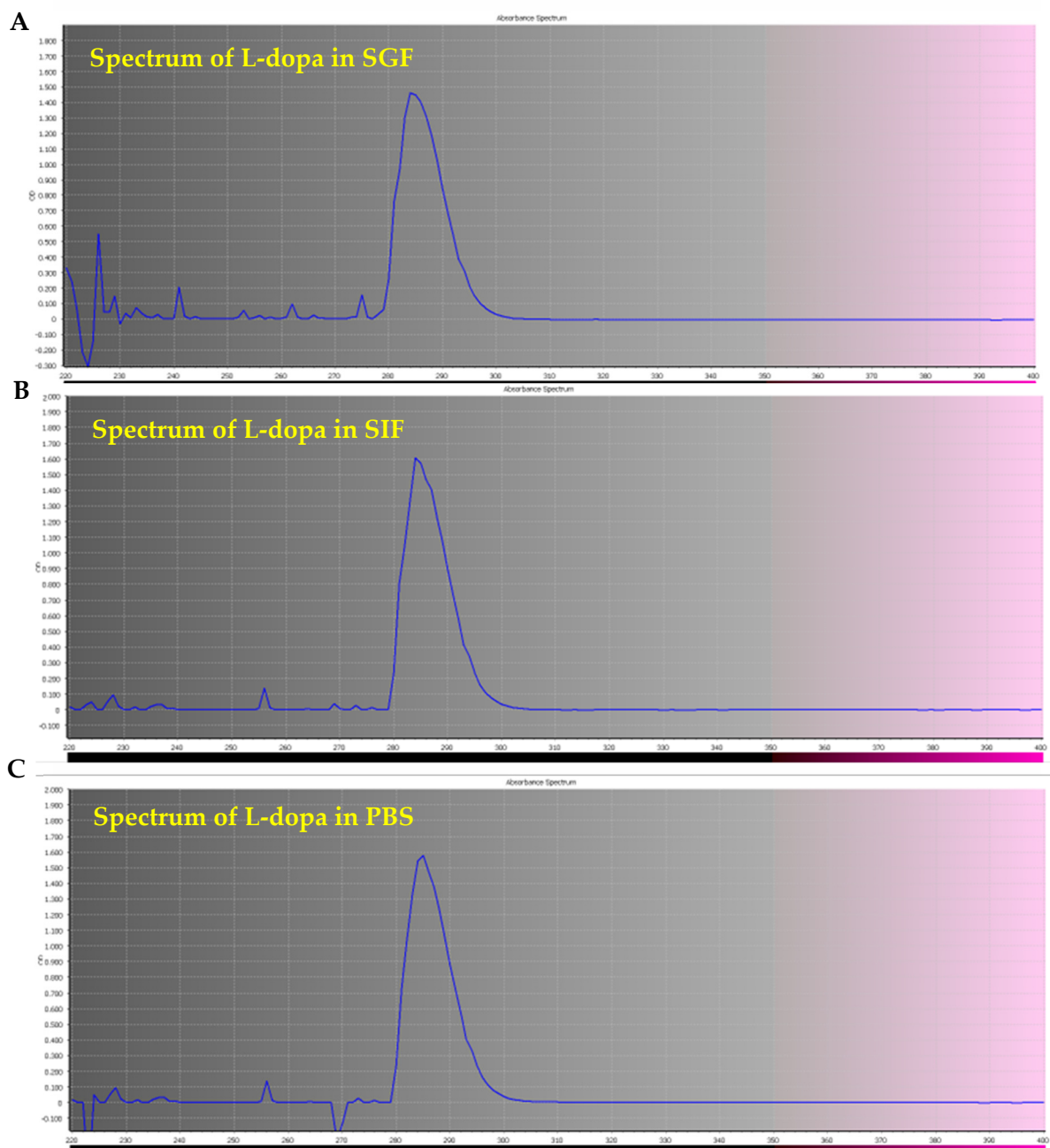
Supplementary data

Table S1 LOD and LOQ of L-dopa detected by UV-Visible spectrophotometry in different media

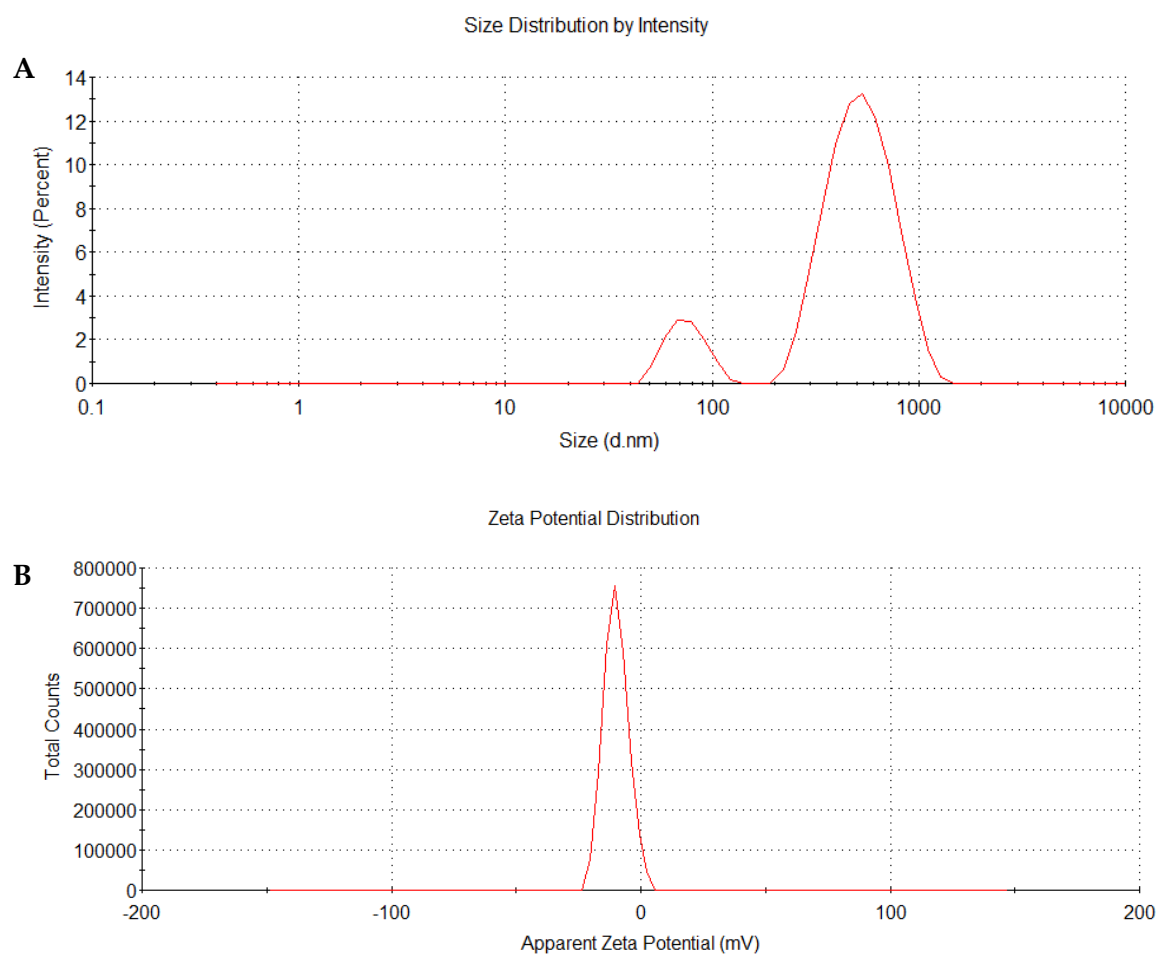
	SGF	SIF	PBS	HPLC
LOD ($\mu\text{g/mL}$)	37.75	67.32	37.99	0.43
LOQ ($\mu\text{g/mL}$)	114.39	204.02	115.13	1.42



Supplementary Figure S1 Standard curve of L-dopa in (A) SGF, (B) SIF, and (C) PBS



Supplementary Figure S2 UV-Visible spectra of L-dopa in (A) SGF, (B) SIF, and (C) PBS.



Supplementary Figure S3 Dynamic light scattering spectra of *M. pruriens* seed extract nanogel presenting (A) size distribution and (B) zeta potential value