

Supplementary Material

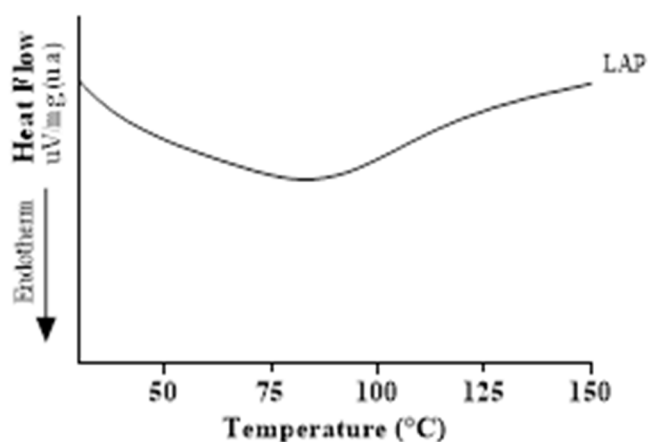


Figure S1. LAP presented a small event at 102°C, which is related to the loss of adsorption water and because it is characterized as a solid material with very low crystallinity.

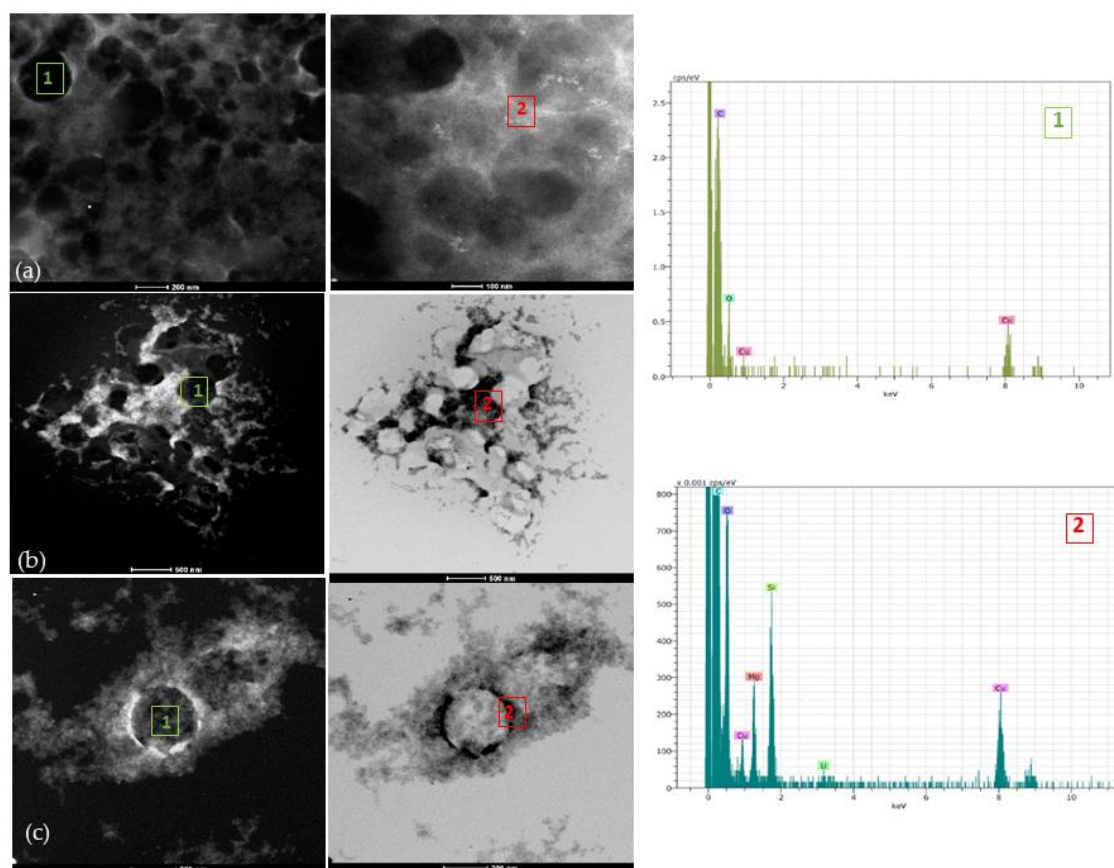


Figure S2. UHRTEM microphotographs with XEDS analysis of CPn_L (a), CPn2_L (b) and CPn4_L (c). Scale bars =100-500 nm. Note: the number 1 (highlighted in green), and 2 (highlighted in red) corresponds to the region of XEDS analysis within and edge of the nanoparticle respectively.