

Supplementary Materials: A Brain-Targeted Approach to Ameliorate Memory Disorders in a Sporadic Alzheimer's Disease Mouse Model via Intranasal Luteolin-Loaded Nanobilosomes

Manal A Elsheikh, Yasmin A. El-Feky, Majid Mohammad Al-Sawahli, Merhan E. Ali, Ahmed M. Fayez and Haidy Abbas

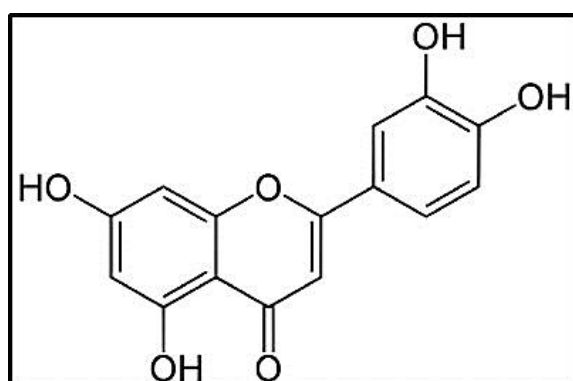


Figure S1. Chemical structure of luteolin.