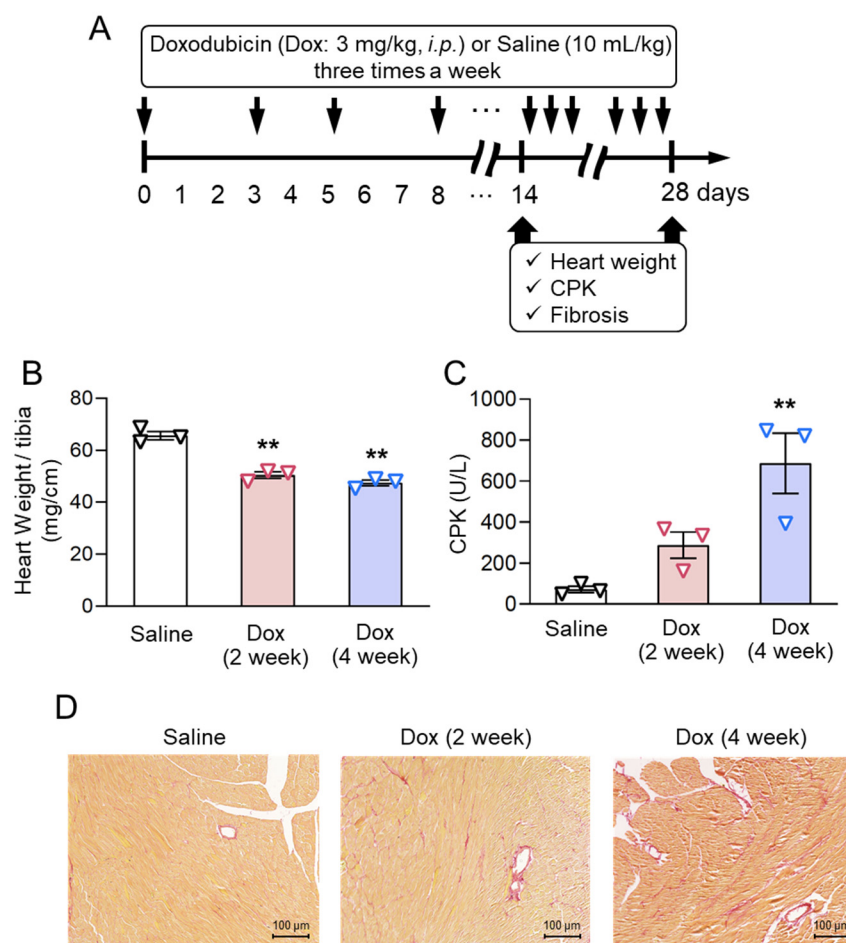
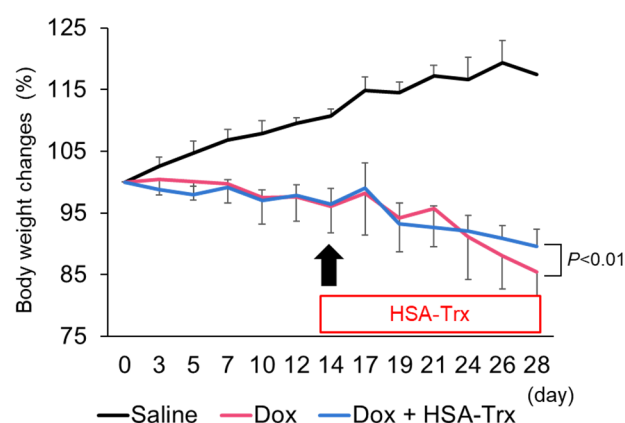


# Supplementary Materials: Long-Acting Thioredoxin Ameliorates Doxorubicin-Induced Cardiomyopathy via Its Anti-Oxidative and Anti-Inflammatory Action

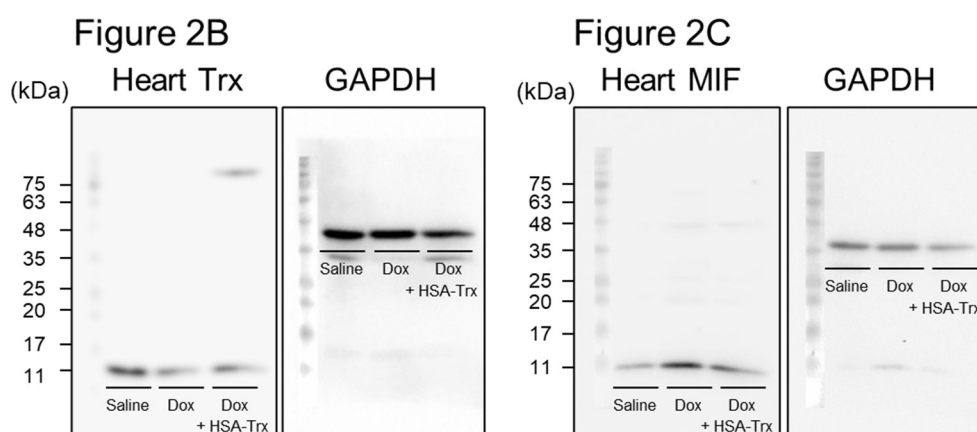
Ryota Murata, Hiroshi Watanabe, Hiroto Nosaki, Kento Nishida, Hitoshi Maeda, Motohiro Nishida and Toru Maruyama



**Figure S1.** Dox-induced cardiomyopathy model mice by the intraperitoneal injection of Dox. **(A)** Experimental protocol for the Dox-induced cardiomyopathy model mice by the intraperitoneal injection of 3 mg/kg Dox three times per week for 4 weeks. **(B)** Changes in heart weight after the injection of Dox. **(C)** Change in the level of creatine phosphokinase (CPK). **(D)** Sirius red-stained heart sections at 2 and 4 weeks after the first injection of Dox. Original magnification: ×200. Scale bars represent 100 μm. Data are expressed as the mean±SE, \*\**p*<0.01.



**Figure S2.** The effect of HSA-Trx on body weight decrease in Dox-induced cardiomyopathy model mice. Dox-induced cardiomyopathy was induced by an intraperitoneal injection of 3 mg/kg Dox three times a week for 4 weeks. HSA-Trx (400 nmol/kg) was administered *i.v.* three times per week at 2 weeks after the first injection of Dox. Data are expressed as the mean  $\pm$  SE.



**Figure S3.** Complete Western blot images before cropping into result Figure 2.

**Table S1.** The primers used for mRNA detection.

Target gene	Forward (5'→3')	Reverse (5'→3')
GAPDH	AAC TTG GCATT GTG GAAGG	ACACATTGGGGGTAGGAACA
$\alpha$ -SMA	AGCCATCTTTTCATTGGGATGG	CCCCTGACAGGACGTTGTTA
TGF- $\beta$	GGATACCAACTATTGCTTCAGCTCC	AGGCTCCAAATATAGGGGCAGGGTC
TNF- $\alpha$	CATGAGCACAGAAAGCATGATCCG	AAGCAGGAATGAGAAGAGGCTGAG
IL-6	TCTCTGCAAGAGACTTCCATCC	AGACAGGTCTGTTGGGAGTG
IL-10	GGACAACATACTGCTAACCGACTC	AAAATCACTCTTCACCTGCTCCAC
iNOS	GTGGTGACAAGCACATTGG	AAGGCCAAACACAGCATACC
CD206	GCCAGAGACATAACAGCA	CAGGTTTCCTTTCAGTCCT
Atrogin-1	CAGAGAGGCAGATTTCGCAAG	GGTGACCCCATACTGCTCTC
Myostatin	CTGTAACCTTCCCAGGACCA	TCTTTTGGGTGCGATAATCC
PGC-1 $\alpha$	TCTCAGTAAGGGGCTGGTTG	AGCAGCACACTCTATGTCCTC