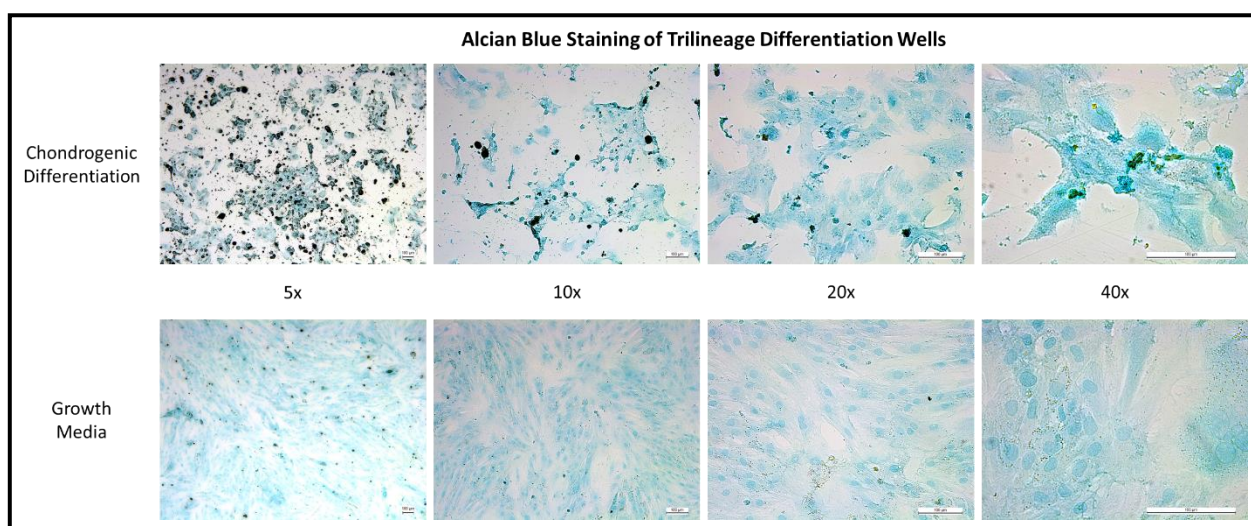
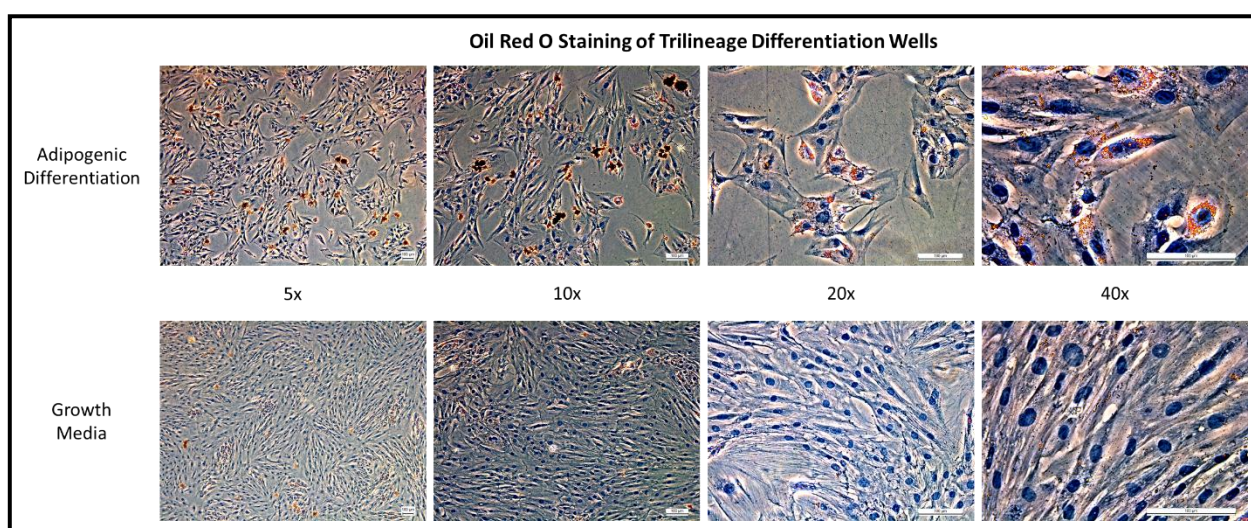


# Supplementary Materials: Etched 3D-Printed Polycaprolactone Constructs Functionalized with Reduced Graphene Oxide for Enhanced Attachment of Dental Pulp-derived Stem Cells

Austin J. Bow, Thomas J. Masi and Madhu S. Dhar



**Figure S1.** Brightfield imaging of Alcian Blue stained samples at 5×, 10×, 20×, and 40× magnifications.



**Figure S2.** Phase contrast imaging of Oil Red O stained samples at 5×, 10×, 20×, and 40× magnifications.