

Supplementary Materials

# Polyelectrolyte-Coated Mesoporous Bioactive Glasses via Layer-by-Layer Deposition for Sustained Co-Delivery of Therapeutic Ions and Drugs

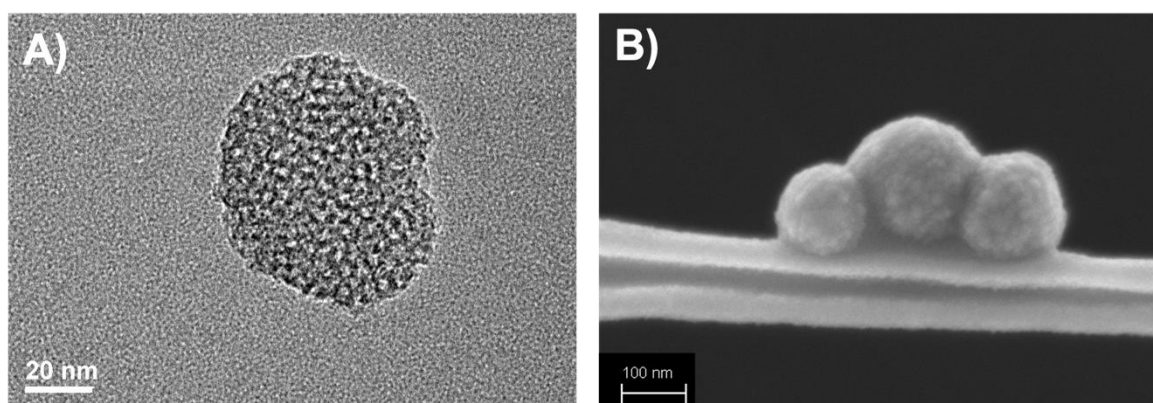
Carlotta Pontremoli <sup>1,2</sup>, Mattia Pagani <sup>1</sup>, Lorenza Maddalena <sup>3</sup>, Federico Carosio <sup>3</sup>, Chiara Vitale-Brovarone <sup>1</sup> and Sonia Fiorilli <sup>1,\*</sup>

<sup>1</sup> Department of Applied Science and Technology, Politecnico di Torino, Corso Duca degli Abruzzi 24, 10129 Torino, Italy; carlotta.pontremoli@unito.it (C.P.); mattia.pagani@polito.it (M.P.); chiara.vitale@polito.it (C.V.-B.)

<sup>2</sup> Department of Chemistry, NIS Interdepartmental and INSTM Reference Centre, University of Torino, via Giuria 7, 10125 Torino, Italy

<sup>3</sup> Department of Applied Science and Technology, Politecnico di Torino, Alessandria Campus, Viale Teresa Michel 5, 15121 Alessandria, Italy; lorenza.maddalena@polito.it (L.M.); federico.carosio@polito.it (F.C.)

\* Correspondence: sonia.fiorilli@polito.it



**Figure S1.** A) TEM image and B) FE-SEM image of un-coated Cu<sub>2</sub>SiO<sub>3</sub>.