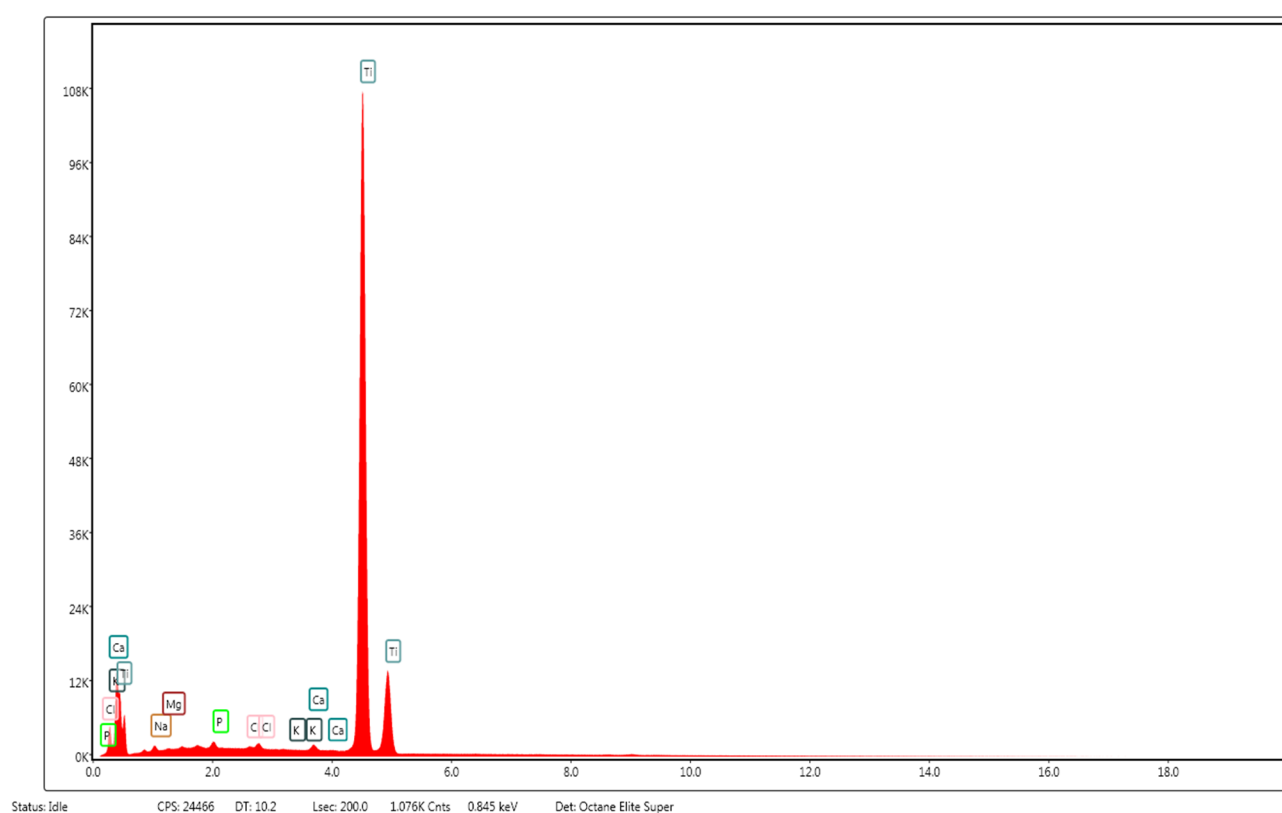


# Supplementary Materials: Composite Drug Delivery System Based on Amorphous Calcium Phosphate–Chitosan: An Efficient Antimicrobial Platform for Extended Release of Tetracycline

Anita Ioana Visan, Carmen Ristoscu, Gianina Popescu-Pelin, Mihai Sopronyi, Consuela Elena Matei, Gabriel Socol, Mariana Carmen Chifiriuc, Coralia Bleotu, David Grossin, Fabien Brouillet, Sylvain Le Grill, Ghislaine Bertrand, Irina Zgura, Rodica Cristescu, Ion N. Mihailescu



**Figure S1.** Supplementary material: EDS data of the composite deposited film after 72 h of degradation.

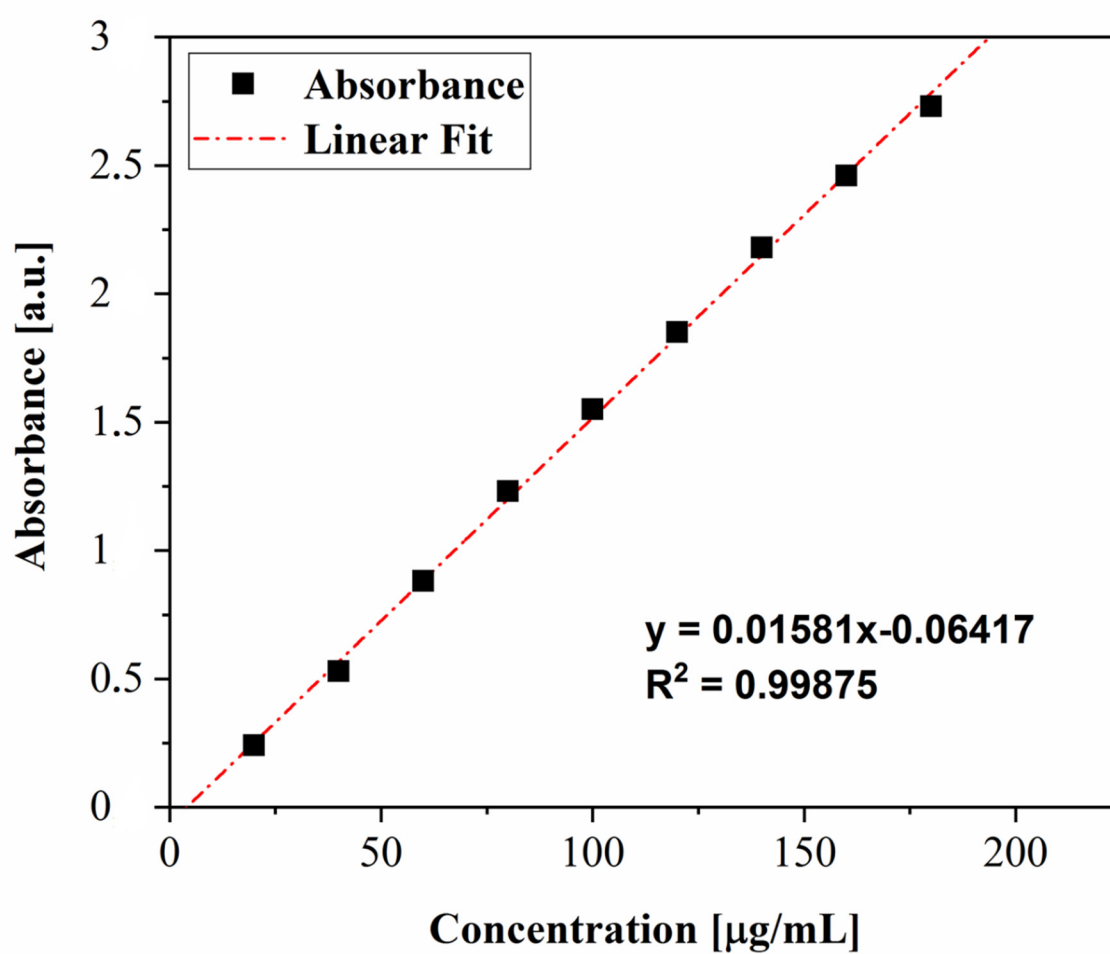


Figure S2. Calibration curve.