

Supplementary Materials: In Vitro Effect of Photodynamic Therapy with Different Lights and Combined or Uncombined with Chlorhexidine on *Candida* spp.

Vanesa Pérez-Laguna, Yolanda Barrena-López, Yolanda Gilaberte and Antonio Rezusta

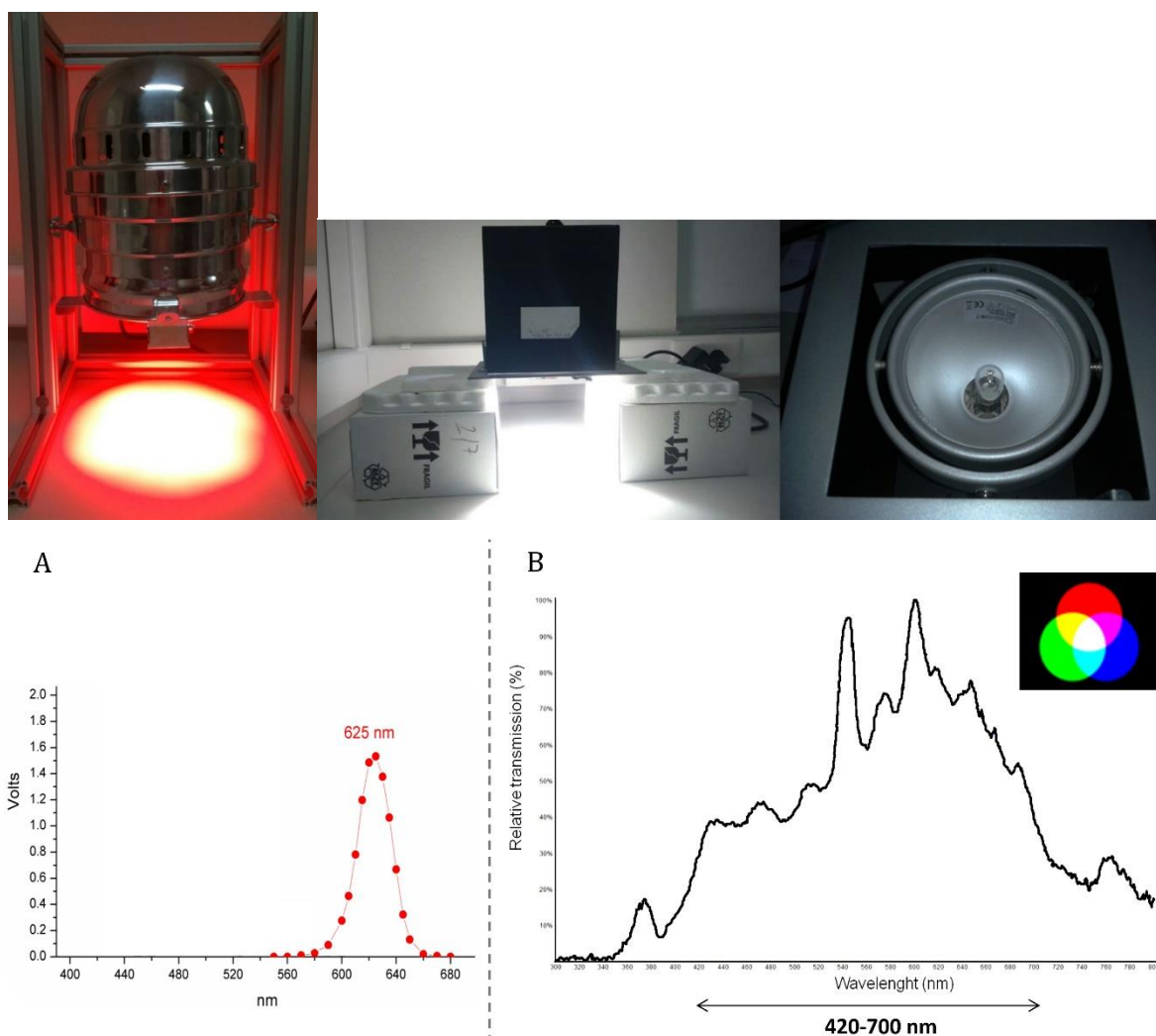
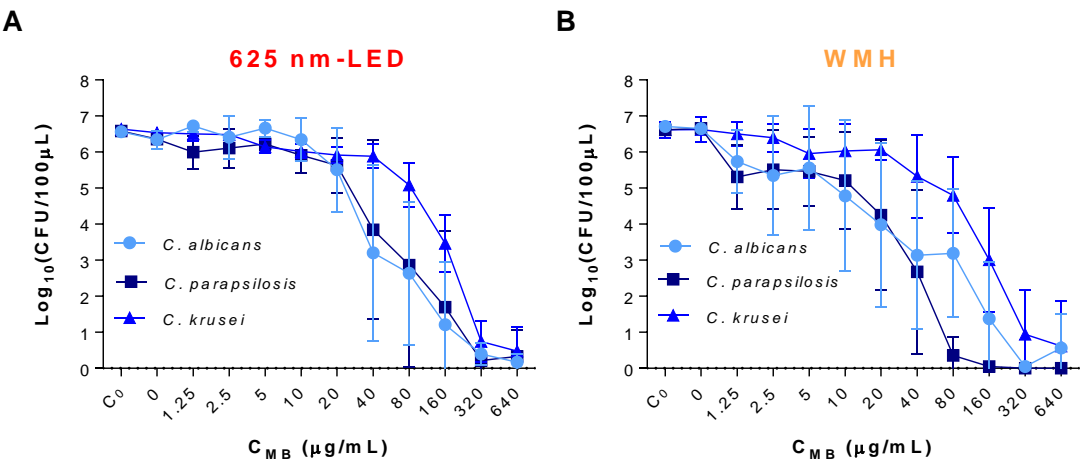


Figure S1. Photos and emission spectra of the lamps used in the photoinactivation experiments. **A:** graph of the emission spectrum of the red-LED lamp and **B:** emission spectrum of the white metal halide lamp.

I)



II)

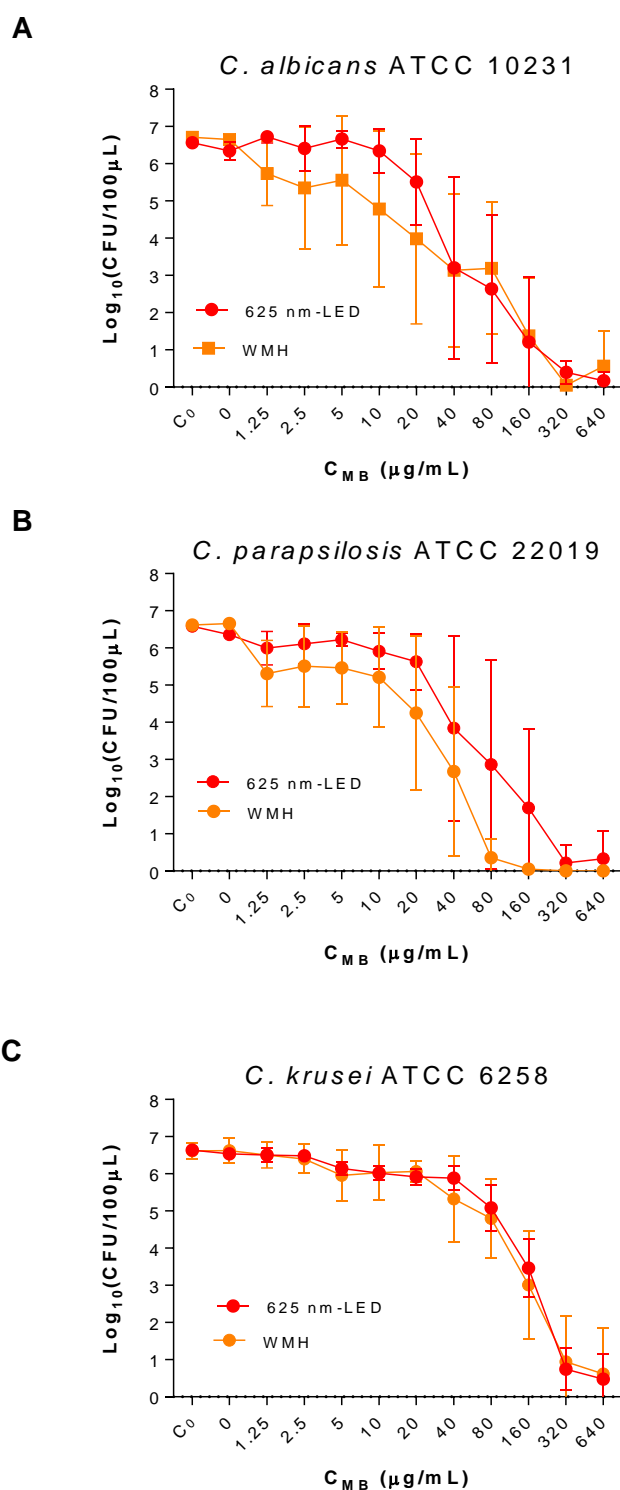


Figure S2. Photoinactivation of *Candida* spp. using MB-aPDT. **I:** Comparison of the response of yeast when they are irradiated with the red-LED lamp (left **A**) or with the WMH lamp (right **B**). **II:** Comparison of the response of each strain to irradiation with the two lamps (**A:** *C. albicans*; **B:** *C. parapsilosis*; **C:** *C. krusei*). The error bars represent the standard deviation calculated for five measurements. C0, initial inoculum control; LEDs, light-emitting diodes; MB, methylene blue; WMH, white metal halide.