

Supplementary Materials: Maturation and Protection Effect of Retinal Tissue-Derived Bioink for 3D Cell Printing Technology

Jongmin Kim, Jeong Sik Kong, Hyeonji Kim, Wonil Han, Jae Yon Won and Dong-Woo Cho

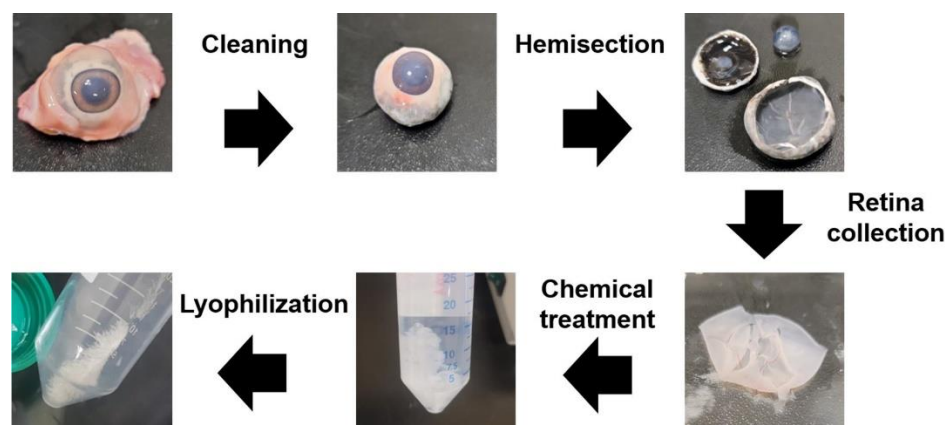


Figure S1. Development procedure of retinal decellularized extracellular matrix (RdECM).

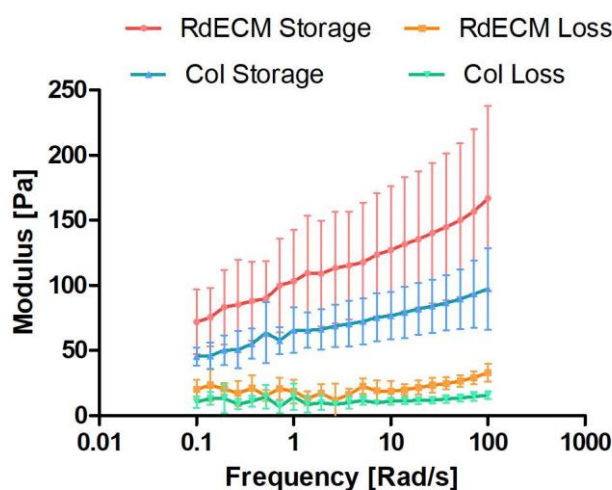


Figure S2. Storage and loss modulus of retinal decellularized extracellular matrix (RdECM) bioink and collagen. The error bars represent the standard deviation.

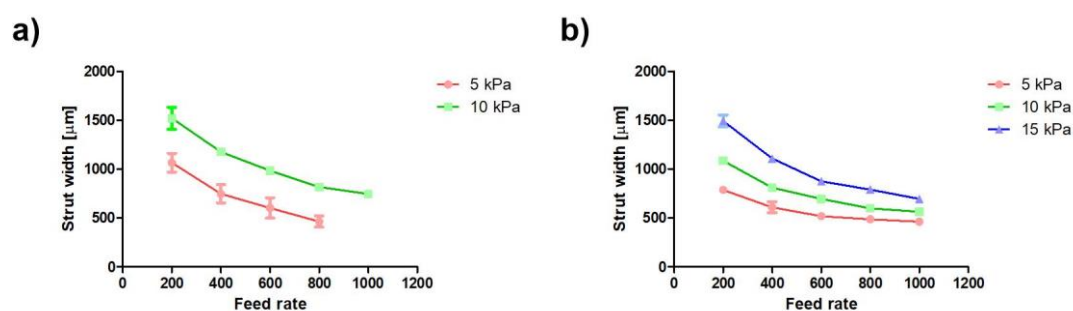


Figure S3. Strut width of printed retinal decellularized extracellular matrix (RdECM) bioink using (a) 25-gauge nozzle and (b) 27-gauge nozzle. The error bars represent the standard deviation.

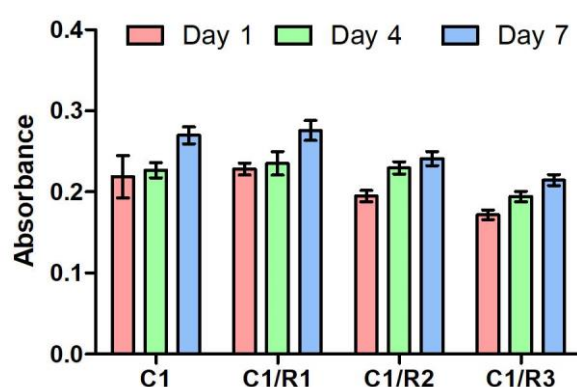


Figure S4. Proliferation of mesenchymal stem cell in various compositions of RdECM bioink. C1: 1% Collagen. C1/R1: 1% collagen/ 1% RdECM. C1/R2: 1% collagen/ 2% RdECM. C1/R3: 1% collagen/ 3% RdECM.

Table S1. List of antibodies.

| Name | Manufacture | Host | Cat # |
|-----------------|-------------|--------|----------|
| Blue opsin | Millipore | Rabbit | AB5407 |
| Red-Green opsin | Millipore | Rabbit | AB5405 |
| Rhodopsin | Abcam | Mouse | ab5417 |
| GFAP | Abcam | Mouse | ab4648 |
| GS | Abcam | Rabbit | ab176562 |

Table S2. Mass spectrometric of RdECM using Sus scrofa UniProt database search.

| Checked | Master | Accession | Description | Coverage [%] | # Peptides | # PSMs | # Unique Peptides | # AAs | MW [kDa] | calc. pI | Score Sequest HT: Sequest HT | # Peptides (by Search Engine): Sequest HT | # Protein Groups |
|---------|----------------|------------|--|--------------|------------|--------|-------------------|-------|----------|----------|------------------------------|---|------------------|
| TRUE | Master Protein | A0A480M929 | Tubulin beta chain OS=Sus scrofa OX=9823 PE=3 SV=1 | 73 | 25 | 93 | 2 | 445 | 49.9 | 4.89 | 320.88 | 25 | 1 |
| TRUE | Master Protein | P02543 | Vimentin OS=Sus scrofa OX=9823 GN=VIM PE=1 SV=2 | 65 | 34 | 99 | 30 | 466 | 53.6 | 5.12 | 318.74 | 34 | 1 |
| TRUE | Master Protein | P62802 | Histone H4 OS=Sus scrofa OX=9823 PE=1 SV=2 | 57 | 10 | 99 | 10 | 103 | 11.4 | 11.36 | 316.95 | 10 | 1 |
| TRUE | Master Protein | A0A480VHK4 | Tubulin beta chain OS=Sus scrofa OX=9823 PE=3 SV=1 | 72 | 24 | 91 | 0 | 445 | 49.8 | 4.89 | 309.82 | 24 | 1 |
| TRUE | Master Protein | Q71LE2 | Histone H3.3 OS=Sus scrofa OX=9823 GN=H3-3A PE=2 SV=3 | 60 | 7 | 74 | 2 | 136 | 15.3 | 11.27 | 307.17 | 7 | 1 |
| TRUE | Master Protein | A0A287AZ37 | Tubulin beta chain OS=Sus scrofa OX=9823 GN=LOC100624785 PE=1 SV=2 | 69 | 24 | 88 | 1 | 465 | 52 | 5.05 | 301.27 | 24 | 1 |
| TRUE | Master Protein | F2Z5B2 | Tubulin beta chain OS=Sus scrofa OX=9823 GN=TUBB PE=1 SV=2 | 70 | 23 | 87 | 3 | 459 | 51.2 | 7.28 | 285.47 | 23 | 1 |
| TRUE | Master Protein | A0A287BFK0 | Histone H2A OS=Sus scrofa OX=9823 GN=H2AW PE=3 SV=1 | 64 | 8 | 68 | 2 | 130 | 14.1 | 11.05 | 278.66 | 8 | 1 |
| TRUE | Master Protein | A0A480UV25 | Tubulin beta chain OS=Sus scrofa OX=9823 PE=3 SV=1 | 70 | 22 | 82 | 2 | 444 | 49.6 | 4.88 | 278.52 | 22 | 1 |
| TRUE | Master Protein | A0A480PJ61 | Histone H2A OS=Sus scrofa OX=9823 PE=3 SV=1 | 70 | 10 | 54 | 5 | 143 | 15.1 | 10.74 | 251.97 | 10 | 1 |
| TRUE | Master Protein | A0A5G2QML3 | Histone H2B OS=Sus scrofa OX=9823 GN=H1-3 PE=1 SV=1 | 41 | 19 | 81 | 4 | 322 | 33.5 | 10.74 | 245.57 | 19 | 1 |
| TRUE | Master Protein | F2Z5L5 | Histone H2A OS=Sus scrofa OX=9823 GN=H2AC20 PE=1 SV=1 | 64 | 8 | 59 | 2 | 129 | 14 | 10.9 | 236.21 | 8 | 1 |
| TRUE | Master Protein | F1RJU4 | Neurofilament light polypeptide OS=Sus scrofa OX=9823 GN=NEFL PE=1 SV=1 | 49 | 30 | 68 | 27 | 552 | 62.4 | 4.61 | 216.45 | 30 | 1 |
| TRUE | Master Protein | A0A4X1WCU9 | Tubulin alpha chain OS=Sus scrofa OX=9823 GN=TUBA1A PE=3 SV=1 | 60 | 16 | 60 | 1 | 416 | 46.3 | 5.08 | 207.3 | 16 | 1 |
| TRUE | Master Protein | A0A0B8RZ36 | Spectrin, alpha, non-erythrocytic 1 OS=Sus scrofa domesticus OX=9825 GN=SPTAN1 PE=3 SV=1 | 26 | 49 | 67 | 49 | 2452 | 281.9 | 5.3 | 204.87 | 49 | 1 |
| TRUE | Master Protein | A0A480IE0 | Tubulin alpha chain OS=Sus scrofa OX=9823 PE=3 SV=1 | 49 | 15 | 56 | 0 | 448 | 49.9 | 5.06 | 196.06 | 15 | 1 |
| TRUE | Master Protein | A0A480VY62 | 160 kDa neurofilament protein OS=Sus scrofa OX=9823 PE=3 SV=1 | 21 | 19 | 57 | 4 | 886 | 99.1 | 4.87 | 182.21 | 19 | 1 |
| TRUE | Master Protein | A0A480NAY0 | Tubulin alpha chain OS=Sus scrofa OX=9823 PE=3 SV=1 | 45 | 13 | 50 | 1 | 449 | 50.1 | 5.1 | 181.98 | 13 | 1 |
| TRUE | Master Protein | A0A287B3D7 | Core histone macro-H2A OS=Sus scrofa OX=9823 GN=MACROH2A1 PE=1 SV=2 | 57 | 14 | 44 | 12 | 369 | 39.2 | 9.83 | 180.13 | 14 | 1 |

| | | | | | | | | | | | | | |
|------|----------------|-------------|--|----|----|----|----|------|-------|-------|--------|----|---|
| TRUE | Master Protein | A0A480IV89 | Tubulin alpha chain OS=Sus scrofa OX=9823 PE=3 SV=1 | 47 | 14 | 50 | 1 | 448 | 49.9 | 5.06 | 178.85 | 14 | 1 |
| TRUE | Master Protein | P08552 | Neurofilament medium polypeptide (Fragment) OS=Sus scrofa OX=9823 GN=NEFM PE=1 SV=2 | 38 | 16 | 54 | 1 | 455 | 52 | 5.24 | 173.46 | 16 | 1 |
| TRUE | Master Protein | F1RVA0 | Histone H3 OS=Sus scrofa OX=9823 GN=HIST1H3E PE=2 SV=2 | 52 | 6 | 40 | 1 | 136 | 15.4 | 11.12 | 165.16 | 6 | 1 |
| TRUE | Master Protein | A0A287BI D4 | Histone H2B OS=Sus scrofa OX=9823 GN=H2BC21 PE=3 SV=1 | 62 | 10 | 53 | 2 | 126 | 13.9 | 10.32 | 164.3 | 10 | 1 |
| TRUE | Master Protein | A0A286ZJ Q0 | Histone H3 OS=Sus scrofa OX=9823 PE=3 SV=1 | 52 | 6 | 39 | 1 | 136 | 15.4 | 11.27 | 162.29 | 6 | 1 |
| TRUE | Master Protein | F1RR02 | Glial fibrillary acidic protein OS=Sus scrofa OX=9823 GN=GFAP PE=1 SV=3 | 56 | 26 | 52 | 25 | 468 | 53.6 | 5.85 | 162.08 | 26 | 1 |
| TRUE | Master Protein | Q6QQAQ1 | Actin, cytoplasmic 1 OS=Sus scrofa OX=9823 GN=ACTB PE=1 SV=2 | 62 | 15 | 46 | 1 | 375 | 41.7 | 5.48 | 157.14 | 15 | 1 |
| TRUE | Master Protein | A0A4X1T EF4 | Tubulin beta chain OS=Sus scrofa OX=9823 PE=3 SV=1 | 41 | 17 | 47 | 4 | 455 | 50.2 | 8.44 | 144.93 | 17 | 1 |
| TRUE | Master Protein | A0A4X1W 6K9 | Spectrin beta chain OS=Sus scrofa OX=9823 PE=3 SV=1 | 21 | 34 | 42 | 33 | 2361 | 274.1 | 5.58 | 138.01 | 34 | 1 |
| TRUE | Master Protein | F1S847 | Alpha-internexin OS=Sus scrofa OX=9823 GN=INA PE=1 SV=1 | 48 | 22 | 43 | 19 | 499 | 55.4 | 5.4 | 135.42 | 22 | 1 |
| TRUE | Master Protein | Q4TTS4 | Histone H1.2-like protein OS=Sus scrofa OX=9823 PE=3 SV=1 | 39 | 13 | 38 | 4 | 213 | 21.4 | 11 | 109.75 | 13 | 1 |
| TRUE | Master Protein | A0A4X1V U50 | Tubulin beta chain OS=Sus scrofa OX=9823 GN=TUBB6 PE=3 SV=1 | 29 | 11 | 32 | 0 | 444 | 49.4 | 5.48 | 103.99 | 11 | 1 |
| TRUE | Master Protein | A0A480U P67 | Myosin-10 isoform 2 OS=Sus scrofa OX=9823 PE=3 SV=1 | 16 | 22 | 29 | 16 | 1976 | 228.7 | 5.55 | 100.57 | 22 | 1 |
| TRUE | Master Protein | A0A4X1T CT0 | Vesicle-fusing ATPase OS=Sus scrofa OX=9823 GN=NSF PE=3 SV=1 | 30 | 19 | 27 | 19 | 747 | 83 | 6.81 | 89.33 | 19 | 1 |
| TRUE | Master Protein | A0A480Q L86 | Myosin-9 OS=Sus scrofa OX=9823 PE=3 SV=1 | 14 | 20 | 27 | 14 | 1967 | 226.7 | 5.53 | 88.45 | 20 | 1 |
| TRUE | Master Protein | Q3ZD69 | Prelamin-A/C OS=Sus scrofa OX=9823 GN=LMNA PE=3 SV=1 | 27 | 14 | 25 | 14 | 664 | 74.2 | 7.18 | 83.82 | 14 | 1 |
| TRUE | Master Protein | A0A286Z VLO | Heterogeneous nuclear ribonucleoprotein U OS=Sus scrofa OX=9823 GN=HNRNPU PE=1 SV=1 | 19 | 14 | 28 | 14 | 825 | 90.6 | 5.86 | 83.08 | 14 | 1 |
| TRUE | Master Protein | F1RFH3 | Neurofilament heavy polypeptide OS=Sus scrofa OX=9823 GN=NEFH PE=1 SV=2 | 16 | 14 | 27 | 11 | 847 | 93.4 | 6.13 | 82.45 | 14 | 1 |
| TRUE | Master Protein | A0A4X1V 2S2 | Peptidase S1 domain-containing protein OS=Sus scrofa OX=9823 GN=LOC100302368 PE=4 SV=1 | 24 | 4 | 21 | 4 | 246 | 25.9 | 7.18 | 75.85 | 4 | 1 |
| TRUE | Master Protein | F1RKM0 | Lamin-B1 isoform 1 OS=Sus scrofa OX=9823 GN=LMNB1 PE=1 SV=2 | 42 | 16 | 24 | 16 | 586 | 66.4 | 5.14 | 73.29 | 16 | 1 |
| TRUE | Master Protein | A0A287A KA3 | Core histone macro-H2A OS=Sus scrofa OX=9823 GN=MACROH2A2 PE=1 SV=1 | 48 | 11 | 18 | 9 | 372 | 40 | 9.69 | 69.77 | 11 | 1 |
| TRUE | Master Protein | A0A4X1U CH7 | Histone H2A OS=Sus scrofa OX=9823 GN=LOC100512448 PE=3 SV=1 | 43 | 4 | 19 | 2 | 128 | 13.5 | 10.58 | 66.19 | 4 | 1 |

| | | | | | | | | | | | | | |
|------|----------------|-------------|---|----|----|----|----|------|-------|-------|-------|----|---|
| TRUE | Master Protein | F1SU06 | Heterochromatin protein 1-binding protein 3 OS=Sus scrofa OX=9823 GN=HP1BP3 PE=1 SV=2 | 29 | 15 | 22 | 15 | 553 | 61.1 | 9.72 | 66.05 | 15 | 1 |
| TRUE | Master Protein | A0A480E WB1 | Histone H1.1 OS=Sus scrofa OX=9823 PE=3 SV=1 | 29 | 8 | 22 | 1 | 218 | 22 | 10.87 | 64.6 | 8 | 1 |
| TRUE | Master Protein | K7GND3 | RNA helicase OS=Sus scrofa OX=9823 GN=DHX9 PE=1 SV=2 | 14 | 13 | 17 | 13 | 1384 | 149.6 | 6.98 | 63.94 | 13 | 1 |
| TRUE | Master Protein | P06348 | Histone H1t OS=Sus scrofa OX=9823 GN=H1-6 PE=1 SV=1 | 20 | 6 | 20 | 1 | 211 | 22 | 11.58 | 59.39 | 6 | 1 |
| TRUE | Master Protein | A0A481C YB2 | Actin, alpha skeletal muscle OS=Sus scrofa OX=9823 PE=3 SV=1 | 31 | 9 | 20 | 3 | 377 | 42 | 5.39 | 53.65 | 9 | 1 |
| TRUE | Master Protein | A0A4X1V 8T4 | H15 domain-containing protein OS=Sus scrofa OX=9823 GN=LOC100510904 PE=3 SV=1 | 24 | 6 | 19 | 6 | 194 | 20.9 | 10.9 | 49.47 | 6 | 1 |
| TRUE | Master Protein | A0A4X1U 498 | Heterogeneous nuclear ribonucleoproteins A2/B1 OS=Sus scrofa OX=9823 GN=HNRNPA2B1 PE=4 SV=1 | 41 | 10 | 16 | 10 | 361 | 38.4 | 9.07 | 46.65 | 10 | 1 |
| TRUE | Master Protein | A0A4X1U Y93 | Heterogeneous nuclear ribonucleoprotein K OS=Sus scrofa OX=9823 GN=HNRNPK PE=4 SV=1 | 33 | 10 | 14 | 10 | 426 | 46.9 | 5.44 | 44.62 | 10 | 1 |
| TRUE | Master Protein | A0A4X1U YH7 | RRM domain-containing protein OS=Sus scrofa OX=9823 GN=HNRNPC PE=3 SV=1 | 25 | 7 | 14 | 7 | 317 | 34.9 | 5.08 | 42.47 | 7 | 1 |
| TRUE | Master Protein | F1SP93 | H(+)-transporting two-sector ATPase OS=Sus scrofa OX=9823 GN=ATP6V1A PE=1 SV=2 | 24 | 9 | 12 | 9 | 603 | 66.6 | 5.33 | 42.44 | 9 | 1 |
| TRUE | Master Protein | A0A5G2Q E26 | Methyl-CpG-binding protein 2 OS=Sus scrofa OX=9823 GN=MECP2 PE=1 SV=1 | 15 | 6 | 12 | 6 | 489 | 52.4 | 9.88 | 37.93 | 6 | 1 |
| TRUE | Master Protein | A0A4X1V 5U6 | Calcium/calmodulin-dependent protein kinase OS=Sus scrofa OX=9823 PE=3 SV=1 | 21 | 6 | 9 | 4 | 498 | 56.3 | 7.25 | 36.32 | 6 | 1 |
| TRUE | Master Protein | A0A5S6GJ G2 | Serine/arginine-rich splicing factor 1 OS=Sus scrofa OX=9823 GN=SRSF1 PE=1 SV=1 | 42 | 9 | 13 | 8 | 236 | 26.9 | 10.29 | 35.11 | 9 | 1 |
| TRUE | Master Protein | A0A287B E52 | PWWP domain-containing protein OS=Sus scrofa OX=9823 GN=PSIP1 PE=1 SV=2 | 17 | 6 | 10 | 6 | 530 | 60.1 | 9.13 | 34.97 | 6 | 1 |
| TRUE | Master Protein | A0A4X1T V43 | Creatine kinase OS=Sus scrofa OX=9823 GN=CKB PE=3 SV=1 | 21 | 6 | 10 | 6 | 403 | 44.8 | 6 | 33.77 | 6 | 1 |
| TRUE | Master Protein | Q6QAAQ4 | Myosin regulatory light chain (Fragment) OS=Sus scrofa OX=9823 PE=2 SV=1 | 46 | 5 | 11 | 4 | 132 | 15 | 4.5 | 33.09 | 5 | 1 |
| TRUE | Master Protein | B0LXF7 | Aprotinin (Fragment) OS=Sus scrofa OX=9823 PE=4 SV=1 | 26 | 1 | 7 | 1 | 58 | 6.7 | 7.61 | 32.41 | 1 | 1 |
| TRUE | Master Protein | A0A5K1U 8P1 | Clathrin heavy chain OS=Sus scrofa OX=9823 GN=CLTC PE=1 SV=1 | 6 | 8 | 10 | 8 | 1681 | 192.6 | 5.77 | 32.36 | 8 | 1 |
| TRUE | Master Protein | A0A4X1V S48 | RNA helicase OS=Sus scrofa OX=9823 GN=DDX17 PE=3 SV=1 | 19 | 11 | 13 | 6 | 672 | 75 | 8.78 | 32.33 | 11 | 1 |
| TRUE | Master Protein | F1RY92 | RRM domain-containing protein OS=Sus scrofa OX=9823 GN=SRSF3 PE=1 SV=2 | 34 | 5 | 10 | 4 | 164 | 19.3 | 11.65 | 30.43 | 5 | 1 |
| TRUE | Master Protein | A0A480J9 N1 | Myosin-11 OS=Sus scrofa OX=9823 PE=3 SV=1 | 7 | 9 | 9 | 6 | 1931 | 223.2 | 5.58 | 29.09 | 9 | 1 |
| TRUE | Master Protein | A0A4X1S G58 | Calmodulin OS=Sus scrofa OX=9823 GN=CALM2 PE=3 SV=1 | 64 | 4 | 7 | 2 | 83 | 9.3 | 4.03 | 28.64 | 4 | 1 |

| | | | | | | | | | | | | | |
|------|----------------|-------------|---|----|----|----|---|------|-------|-------|-------|----|---|
| TRUE | Master Protein | A0A287AHS0 | Calmodulin OS=Sus scrofa OX=9823 GN=CALM3 PE=1 SV=1 | 35 | 4 | 7 | 2 | 148 | 16.7 | 4.22 | 28.64 | 4 | 1 |
| TRUE | Master Protein | A0A480PNA9 | ADP/ATP translocase 2 OS=Sus scrofa OX=9823 PE=3 SV=1 | 33 | 8 | 11 | 2 | 298 | 32.9 | 9.77 | 28.08 | 8 | 1 |
| TRUE | Master Protein | A0A480TAH1 | Myosin-14 isoform 2 OS=Sus scrofa OX=9823 PE=3 SV=1 | 7 | 11 | 11 | 7 | 1974 | 226.5 | 5.54 | 27.96 | 11 | 1 |
| TRUE | Master Protein | A0A4X1TBF9 | ADP/ATP translocase 3 OS=Sus scrofa OX=9823 GN=SLC25A6 PE=3 SV=1 | 29 | 7 | 11 | 1 | 297 | 32.8 | 9.92 | 27.4 | 7 | 1 |
| TRUE | Master Protein | A0A287B401 | RNA-binding protein 14 isoform 1 OS=Sus scrofa OX=9823 GN=RBM14 PE=1 SV=1 | 14 | 5 | 8 | 5 | 669 | 69.5 | 9.67 | 27.05 | 5 | 1 |
| TRUE | Master Protein | F2Z581 | Histone domain-containing protein OS=Sus scrofa OX=9823 PE=1 SV=3 | 33 | 5 | 10 | 1 | 85 | 9.4 | 10.73 | 26.85 | 5 | 1 |
| TRUE | Master Protein | A0A287ANZ8 | Thy-1 antigen OS=Sus scrofa OX=9823 GN=THY1 PE=1 SV=1 | 29 | 4 | 8 | 4 | 154 | 17.2 | 8.94 | 26.51 | 4 | 1 |
| TRUE | Master Protein | A0A287BSR0 | Desmin OS=Sus scrofa OX=9823 GN=DES PE=1 SV=1 | 7 | 4 | 9 | 1 | 471 | 54.1 | 5.21 | 25.5 | 4 | 1 |
| TRUE | Master Protein | A0A287AN50 | Agrin OS=Sus scrofa OX=9823 GN=AGRN PE=1 SV=2 | 5 | 8 | 10 | 8 | 2069 | 218.7 | 6.27 | 25.25 | 8 | 1 |
| TRUE | Master Protein | A0A480IX08 | V-type proton ATPase subunit a OS=Sus scrofa OX=9823 PE=3 SV=1 | 13 | 9 | 9 | 9 | 839 | 96.4 | 6.57 | 25.09 | 9 | 1 |
| TRUE | Master Protein | A0A287BRP2 | Guanine nucleotide-binding protein G(T) subunit alpha-1 isoform X2 OS=Sus scrofa OX=9823 GN=GNAT1 PE=1 SV=1 | 21 | 5 | 8 | 3 | 350 | 40 | 5.73 | 24.88 | 5 | 1 |
| TRUE | Master Protein | A0A088RSH5 | Nuclear mitotic apparatus protein 1 OS=Sus scrofa domesticus OX=9825 GN=NUMA1 PE=4 SV=1 | 6 | 9 | 9 | 9 | 2088 | 233.4 | 5.73 | 24.2 | 9 | 1 |
| TRUE | Master Protein | A0A287BLH5 | DEAD box protein 5 OS=Sus scrofa OX=9823 GN=DDX5 PE=3 SV=2 | 16 | 8 | 9 | 3 | 617 | 69.4 | 9.11 | 23.03 | 8 | 1 |
| TRUE | Master Protein | A0A5G2QCQ9 | Calcium/calmodulin-dependent protein kinase OS=Sus scrofa OX=9823 GN=CAMK2B PE=1 SV=1 | 11 | 5 | 7 | 2 | 670 | 72.7 | 8.12 | 22.76 | 5 | 1 |
| TRUE | Master Protein | A0A4X1TYS6 | Elongation factor 1-alpha OS=Sus scrofa OX=9823 GN=EEF1A1 PE=3 SV=1 | 18 | 7 | 7 | 7 | 450 | 49 | 8.87 | 21.5 | 7 | 1 |
| TRUE | Master Protein | F1SDE3 | Centromere protein V OS=Sus scrofa OX=9823 GN=CENPV PE=1 SV=2 | 29 | 4 | 7 | 4 | 259 | 28.1 | 9.89 | 21.48 | 4 | 1 |
| TRUE | Master Protein | A0A4X1W8E1 | WD_REPEATS_REGION domain-containing protein OS=Sus scrofa OX=9823 GN=GNB1 PE=3 SV=1 | 17 | 4 | 6 | 1 | 340 | 37.4 | 6 | 21.43 | 4 | 1 |
| TRUE | Master Protein | A0A4X1V RD7 | FERM domain-containing protein OS=Sus scrofa OX=9823 PE=4 SV=1 | 7 | 5 | 6 | 5 | 1196 | 132.2 | 5.2 | 20.8 | 5 | 1 |
| TRUE | Master Protein | A0A4X1TYS5 | Dynamin GTPase OS=Sus scrofa OX=9823 PE=3 SV=1 | 12 | 7 | 8 | 7 | 863 | 97.1 | 7.74 | 20.78 | 7 | 1 |
| TRUE | Master Protein | A0A4X1TS37 | Heat shock protein HSP 90-alpha OS=Sus scrofa OX=9823 GN=HSP90AA1 PE=3 SV=1 | 11 | 7 | 8 | 7 | 789 | 90.6 | 5.02 | 20.47 | 7 | 1 |
| TRUE | Master Protein | A0A287A6P1 | Actin-depolymerizing factor OS=Sus scrofa OX=9823 GN=GSN PE=3 SV=2 | 11 | 5 | 6 | 1 | 780 | 85.6 | 6.47 | 20.15 | 5 | 1 |
| TRUE | Master Protein | A0A287AMM6 | MICOS complex subunit MIC60 OS=Sus scrofa OX=9823 GN=IMMT PE=1 SV=1 | 10 | 5 | 6 | 5 | 746 | 82.6 | 6.61 | 19.68 | 5 | 1 |

| | | | | | | | | | | | | | |
|------|----------------|------------|--|----|---|---|---|------|-------|-------|-------|---|---|
| TRUE | Master Protein | A0A481B449 | Actin-depolymerizing factor OS=Sus scrofa OX=9823 PE=3 SV=1 | 11 | 5 | 6 | 1 | 660 | 71.9 | 6.73 | 18.77 | 5 | 1 |
| TRUE | Master Protein | A0A4X1UES8 | WD_REPEATS_REGION domain-containing protein OS=Sus scrofa OX=9823 GN=GNB2 PE=3 SV=1 | 17 | 4 | 5 | 1 | 340 | 37.3 | 6 | 18.7 | 4 | 1 |
| TRUE | Master Protein | I3LGB1 | Aryl-hydrocarbon-interacting protein-like 1 OS=Sus scrofa OX=9823 GN=AIPL1 PE=1 SV=2 | 19 | 5 | 6 | 5 | 328 | 38.3 | 6.14 | 18.67 | 5 | 1 |
| TRUE | Master Protein | A0A480YZR2 | Cytoskeleton-associated protein 4 OS=Sus scrofa OX=9823 PE=4 SV=1 | 15 | 6 | 6 | 6 | 592 | 64.7 | 5.73 | 18.53 | 6 | 1 |
| TRUE | Master Protein | A0A480UKG6 | Vacuolar proton pump subunit B OS=Sus scrofa OX=9823 PE=3 SV=1 | 17 | 6 | 6 | 6 | 511 | 56.6 | 5.81 | 18.16 | 6 | 1 |
| TRUE | Master Protein | A0A480PZC9 | Calcium/calmodulin-dependent protein kinase OS=Sus scrofa OX=9823 PE=3 SV=1 | 14 | 5 | 6 | 2 | 542 | 60.3 | 7.17 | 17.93 | 5 | 1 |
| TRUE | Master Protein | K7GSR6 | Ecto-5'-nucleotidase OS=Sus scrofa OX=9823 GN=NT5E PE=1 SV=1 | 12 | 5 | 6 | 5 | 574 | 62.8 | 6.68 | 17.7 | 5 | 1 |
| TRUE | Master Protein | A0A4X1U5K3 | S-arrestin OS=Sus scrofa OX=9823 GN=SAG PE=3 SV=1 | 15 | 4 | 6 | 4 | 394 | 43.9 | 7.11 | 17.52 | 4 | 1 |
| TRUE | Master Protein | A0A287B770 | RRM domain-containing protein OS=Sus scrofa OX=9823 GN=SRSF10 PE=1 SV=2 | 18 | 5 | 6 | 5 | 261 | 31.2 | 11.27 | 17.16 | 5 | 1 |
| TRUE | Master Protein | A0A4X1U9Z4 | Nucleoplasmin domain-containing protein OS=Sus scrofa OX=9823 GN=NPM1 PE=3 SV=1 | 17 | 3 | 5 | 3 | 259 | 28.4 | 4.69 | 16.98 | 3 | 1 |
| TRUE | Master Protein | K7GT43 | Structural maintenance of chromosomes protein OS=Sus scrofa OX=9823 GN=SMC1A PE=1 SV=2 | 6 | 6 | 6 | 6 | 1187 | 138 | 8.72 | 16.77 | 6 | 1 |
| TRUE | Master Protein | A0A4X1ST13 | Protein kinase C OS=Sus scrofa OX=9823 GN=PRKCA PE=3 SV=1 | 12 | 6 | 6 | 2 | 688 | 78.7 | 7.36 | 15.43 | 6 | 1 |
| TRUE | Master Protein | I3LSU1 | Non-POU domain containing octamer binding OS=Sus scrofa OX=9823 GN=NONO PE=1 SV=2 | 14 | 5 | 5 | 5 | 543 | 62.4 | 9.35 | 15.34 | 5 | 1 |
| TRUE | Master Protein | P31006 | Guanylate kinase OS=Sus scrofa OX=9823 GN=GUK1 PE=1 SV=2 | 20 | 3 | 5 | 3 | 198 | 21.9 | 6.95 | 15.11 | 3 | 1 |
| TRUE | Master Protein | A0A287BSC3 | Alkaline phosphatase OS=Sus scrofa OX=9823 GN=ALPL PE=1 SV=2 | 8 | 5 | 6 | 5 | 834 | 91.2 | 8.7 | 15.06 | 5 | 1 |
| TRUE | Master Protein | A0A5S6G3Y8 | Heat shock 27 kDa protein OS=Sus scrofa OX=9823 GN=HSPB1 PE=3 SV=1 | 11 | 3 | 5 | 3 | 365 | 40.3 | 10.55 | 14.94 | 3 | 1 |
| TRUE | Master Protein | A0A286ZPE3 | Helix-destabilizing protein OS=Sus scrofa OX=9823 GN=HNRNPA1 PE=1 SV=1 | 10 | 3 | 5 | 3 | 373 | 38.8 | 9.13 | 14.89 | 3 | 1 |
| TRUE | Master Protein | A0A286ZNE8 | VWFA domain-containing protein OS=Sus scrofa OX=9823 GN=CACNA2D2 PE=1 SV=2 | 4 | 4 | 5 | 4 | 1068 | 121.1 | 5.41 | 14.25 | 4 | 1 |
| TRUE | Master Protein | A0A480W6B7 | Tyrosine-protein kinase BAZ1B isoform X1 OS=Sus scrofa OX=9823 PE=4 SV=1 | 4 | 4 | 5 | 4 | 1418 | 162 | 8.68 | 14.2 | 4 | 1 |
| TRUE | Master Protein | A0A287AGF9 | Nop domain-containing protein OS=Sus scrofa OX=9823 GN=NOP58 PE=1 SV=2 | 8 | 3 | 4 | 3 | 537 | 60.4 | 8.56 | 13.99 | 3 | 1 |
| TRUE | Master Protein | A0A480WOD4 | Heterogeneous nuclear ribonucleoprotein A3 isoform a OS=Sus scrofa OX=9823 PE=4 SV=1 | 20 | 5 | 5 | 5 | 378 | 39.6 | 9.01 | 13.62 | 5 | 1 |
| TRUE | Master Protein | P62272 | 40S ribosomal protein S18 OS=Sus scrofa OX=9823 GN=RPS18 PE=1 SV=3 | 30 | 5 | 6 | 5 | 152 | 17.7 | 10.99 | 13.53 | 5 | 1 |

| | | | | | | | | | | | | | |
|------|----------------|------------|---|----|---|---|---|------|-------|-------|-------|---|---|
| TRUE | Master Protein | A0A4X1V3C3 | Small nuclear ribonucleoprotein Sm D3 OS=Sus scrofa OX=9823 GN=SNRPD3 PE=3 SV=1 | 31 | 3 | 4 | 3 | 126 | 13.9 | 10.32 | 13.26 | 3 | 1 |
| TRUE | Master Protein | A0A0B8R5A0 | Solute carrier family 25 (Mitochondrial carrier: glutamate), member 22 OS=Sus scrofa domesticus OX=9825 GN=SLC25A22 PE=3 SV=1 | 16 | 5 | 5 | 5 | 322 | 34.4 | 9.54 | 13.03 | 5 | 1 |
| TRUE | Master Protein | A0A4X1U434 | Peptidylprolyl isomerase OS=Sus scrofa OX=9823 PE=4 SV=1 | 7 | 3 | 4 | 3 | 604 | 63.7 | 7.05 | 12.99 | 3 | 1 |
| TRUE | Master Protein | A0A4X1TWR8 | H15 domain-containing protein OS=Sus scrofa OX=9823 GN=LOC100516295 PE=3 SV=1 | 18 | 4 | 5 | 4 | 214 | 22.5 | 10.71 | 12.92 | 4 | 1 |
| TRUE | Master Protein | A0A481A9M2 | IgLON family member 5 OS=Sus scrofa OX=9823 GN=LOC110261043 PE=4 SV=1 | 19 | 5 | 5 | 5 | 348 | 38.2 | 6.76 | 12.68 | 5 | 1 |
| TRUE | Master Protein | A0A5G2QFH4 | RRM domain-containing protein OS=Sus scrofa OX=9823 GN=TRA2B PE=1 SV=1 | 16 | 2 | 4 | 2 | 188 | 21.9 | 10.15 | 12.63 | 2 | 1 |
| TRUE | Master Protein | A0A480W7D9 | Telomeric repeat-binding factor 2 isoform X2 OS=Sus scrofa OX=9823 PE=4 SV=1 | 11 | 3 | 4 | 3 | 288 | 31.7 | 9.54 | 12.51 | 3 | 1 |
| TRUE | Master Protein | Q9MZ15 | Voltage-dependent anion-selective channel protein 2 OS=Sus scrofa OX=9823 GN=VDAC2 PE=2 SV=1 | 20 | 4 | 4 | 4 | 294 | 31.6 | 7.56 | 12.41 | 4 | 1 |
| TRUE | Master Protein | A0A480JVL5 | RNA-binding protein with serine-rich domain 1 OS=Sus scrofa OX=9823 GN=RNPS1 PE=1 SV=1 | 8 | 2 | 4 | 2 | 305 | 34.2 | 11.84 | 12.39 | 2 | 1 |
| TRUE | Master Protein | A0A480Y9K7 | Opioid-binding protein/cell adhesion molecule isoform b OS=Sus scrofa OX=9823 PE=4 SV=1 | 22 | 4 | 4 | 3 | 345 | 38 | 6.77 | 12.31 | 4 | 1 |
| TRUE | Master Protein | K9J4L8 | Protein kinase C OS=Sus scrofa OX=9823 GN=PRKCB_tv2 PE=1 SV=1 | 10 | 5 | 5 | 1 | 673 | 76.9 | 7.02 | 12.28 | 5 | 1 |
| TRUE | Master Protein | A0A5G2QFK1 | RNA helicase OS=Sus scrofa OX=9823 GN=EIF4A3 PE=3 SV=1 | 11 | 3 | 4 | 3 | 390 | 44.5 | 6.47 | 12.18 | 3 | 1 |
| TRUE | Master Protein | A0A0B8RTL5 | Heterogeneous nuclear ribonucleoprotein R OS=Sus scrofa domesticus OX=9825 GN=HNRNPR PE=4 SV=1 | 5 | 2 | 4 | 2 | 532 | 59.6 | 9.16 | 12.17 | 2 | 1 |
| TRUE | Master Protein | A0A4X1SKZ9 | VWFA domain-containing protein OS=Sus scrofa OX=9823 GN=CACNA2D1 PE=3 SV=1 | 5 | 4 | 5 | 4 | 1084 | 122.3 | 5.2 | 12.04 | 4 | 1 |
| TRUE | Master Protein | A0A4X1TSA4 | Protein unc-119 homolog A OS=Sus scrofa OX=9823 GN=UNC119 PE=3 SV=1 | 17 | 3 | 4 | 3 | 240 | 26.9 | 6.15 | 11.93 | 3 | 1 |
| TRUE | Master Protein | A0A480W9G4 | 40S ribosomal protein S13 OS=Sus scrofa OX=9823 PE=3 SV=1 | 20 | 3 | 4 | 3 | 148 | 16.9 | 10.45 | 11.86 | 3 | 1 |
| TRUE | Master Protein | A0A287BRY0 | Tropomyosin alpha-1 chain OS=Sus scrofa OX=9823 GN=TPM1 PE=1 SV=2 | 19 | 4 | 5 | 2 | 248 | 28.7 | 4.77 | 11.68 | 4 | 1 |
| TRUE | Master Protein | A0A4X1TGS8 | Myosin regulatory light polypeptide 9 OS=Sus scrofa OX=9823 GN=MYL9 PE=4 SV=1 | 12 | 2 | 5 | 1 | 172 | 19.8 | 4.82 | 11.65 | 2 | 1 |
| TRUE | Master Protein | A0A5G2RGK0 | Purine rich element binding protein A OS=Sus scrofa OX=9823 GN=PURA PE=1 SV=1 | 12 | 3 | 3 | 3 | 482 | 50.5 | 8.43 | 11.62 | 3 | 1 |
| TRUE | Master Protein | A0A4X1V3Y1 | SAP domain-containing protein OS=Sus scrofa OX=9823 GN=ACIN1 PE=4 SV=1 | 4 | 4 | 5 | 4 | 1252 | 141.4 | 6.14 | 11.4 | 4 | 1 |
| TRUE | Master Protein | A0A4X1UWL5 | Cellular retinoic acid-binding protein 1 OS=Sus scrofa OX=9823 GN=CRABP1 PE=3 SV=1 | 53 | 4 | 4 | 4 | 110 | 12.5 | 5.3 | 11.32 | 4 | 1 |
| TRUE | Master Protein | A0A4X1UGM9 | SEC7 domain-containing protein OS=Sus scrofa OX=9823 PE=3 SV=1 | 4 | 4 | 5 | 4 | 1203 | 129 | 6.55 | 11.17 | 4 | 1 |

| | | | | | | | | | | | | | |
|------|----------------|------------|--|----|---|---|---|------|-------|-------|-------|---|---|
| TRUE | Master Protein | F1RN35 | G protein-coupled receptor kinase OS=Sus scrofa OX=9823 GN=GRK1 PE=1 SV=1 | 5 | 2 | 4 | 2 | 564 | 63.3 | 5.78 | 11.17 | 2 | 1 |
| TRUE | Master Protein | P46410 | Glutamine synthetase OS=Sus scrofa OX=9823 GN=GLUL PE=2 SV=3 | 13 | 5 | 5 | 5 | 373 | 42 | 6.74 | 11.07 | 5 | 1 |
| TRUE | Master Protein | O62680 | CD59 glycoprotein OS=Sus scrofa OX=9823 GN=CD59 PE=1 SV=1 | 9 | 1 | 3 | 1 | 123 | 13.8 | 7.94 | 10.94 | 1 | 1 |
| TRUE | Master Protein | A0A4X1T5Y2 | High mobility group AT-hook protein 1 OS=Sus scrofa OX=9823 GN=HMGA1 PE=3 SV=1 | 15 | 1 | 3 | 1 | 107 | 11.6 | 10.32 | 10.91 | 1 | 1 |
| TRUE | Master Protein | A0A287B5N7 | Tropomyosin alpha-1 chain OS=Sus scrofa OX=9823 GN=TPM1 PE=1 SV=2 | 11 | 3 | 4 | 1 | 351 | 40 | 4.75 | 10.85 | 3 | 1 |
| TRUE | Master Protein | A0A5G2QMG4 | Unconventional myosin-6 OS=Sus scrofa OX=9823 GN=MYO6 PE=1 SV=1 | 4 | 4 | 4 | 4 | 1226 | 141.6 | 8.44 | 10.83 | 4 | 1 |
| TRUE | Master Protein | A0A480SLY1 | Tropomyosin alpha-3 chain isoform Tpm3.3cy OS=Sus scrofa OX=9823 PE=3 SV=1 | 16 | 3 | 4 | 1 | 248 | 28.7 | 4.72 | 10.79 | 3 | 1 |
| TRUE | Master Protein | A1XQS3 | Mitochondrial NDUFA4 OS=Sus scrofa OX=9823 GN=NDUFA4 PE=2 SV=1 | 28 | 2 | 4 | 2 | 82 | 9.3 | 9.38 | 10.51 | 2 | 1 |
| TRUE | Master Protein | A0A4X1U2F8 | Histone deacetylase complex subunit SAP18 OS=Sus scrofa OX=9823 GN=SAP18 PE=3 SV=1 | 23 | 2 | 3 | 2 | 153 | 17.6 | 9.35 | 10.4 | 2 | 1 |
| TRUE | Master Protein | A0A4X1TV68 | Signal recognition particle receptor subunit beta OS=Sus scrofa OX=9823 PE=3 SV=1 | 17 | 3 | 4 | 3 | 271 | 29.9 | 9.33 | 10.25 | 3 | 1 |
| TRUE | Master Protein | Q0Z8U2 | 40S ribosomal protein S3 OS=Sus scrofa OX=9823 GN=RPS3 PE=1 SV=1 | 16 | 3 | 4 | 3 | 243 | 26.7 | 9.66 | 10.23 | 3 | 1 |
| TRUE | Master Protein | A0A287B5Y5 | RNA helicase OS=Sus scrofa OX=9823 GN=DHX15 PE=1 SV=1 | 5 | 4 | 4 | 4 | 766 | 87.8 | 7.24 | 9.63 | 4 | 1 |
| TRUE | Master Protein | A1XQU3 | 60S ribosomal protein L14 OS=Sus scrofa OX=9823 GN=RPL14 PE=1 SV=1 | 6 | 1 | 3 | 1 | 213 | 23.3 | 10.77 | 9.4 | 1 | 1 |
| TRUE | Master Protein | A0A287AV47 | PWI domain-containing protein OS=Sus scrofa OX=9823 GN=SRRM1 PE=1 SV=1 | 4 | 1 | 2 | 1 | 968 | 109.3 | 11.71 | 9.31 | 1 | 1 |
| TRUE | Master Protein | I3L8C5 | Heat shock 70 kDa protein 12A isoform 2 OS=Sus scrofa OX=9823 GN=HSPA12A PE=1 SV=1 | 7 | 4 | 4 | 4 | 675 | 74.8 | 6.61 | 9.27 | 4 | 1 |
| TRUE | Master Protein | Q0QEV2 | Ribosomal protein L18 (Fragment) OS=Sus scrofa OX=9823 GN=RPL18 PE=2 SV=1 | 15 | 2 | 3 | 2 | 166 | 18.9 | 11.78 | 9.2 | 2 | 1 |
| TRUE | Master Protein | A0A4X1W8J3 | TAR DNA-binding protein 43 OS=Sus scrofa OX=9823 PE=4 SV=1 | 10 | 3 | 3 | 3 | 435 | 47.2 | 7.31 | 9.17 | 3 | 1 |
| TRUE | Master Protein | A0A4X1SVK7 | Repressor/activator protein 1 homolog OS=Sus scrofa OX=9823 PE=3 SV=1 | 10 | 3 | 3 | 3 | 401 | 44.3 | 4.77 | 9.16 | 3 | 1 |
| TRUE | Master Protein | A0A5G2R0B1 | Hexokinase OS=Sus scrofa OX=9823 GN=HK1 PE=1 SV=1 | 5 | 4 | 4 | 4 | 779 | 86.7 | 7.28 | 9.15 | 4 | 1 |
| TRUE | Master Protein | A0A4X1UX38 | Voltage-dependent anion-selective channel protein 1 OS=Sus scrofa OX=9823 GN=VDAC1 PE=3 SV=1 | 14 | 4 | 4 | 3 | 302 | 33 | 8.69 | 8.99 | 4 | 1 |
| TRUE | Master Protein | A0A287BFM2 | SAM domain-containing protein OS=Sus scrofa OX=9823 GN=SAMD11 PE=1 SV=2 | 6 | 3 | 3 | 3 | 683 | 72.9 | 7.33 | 8.98 | 3 | 1 |
| TRUE | Master Protein | A0A4X1TI48 | Nucleolin OS=Sus scrofa OX=9823 GN=NCL PE=4 SV=1 | 3 | 2 | 3 | 2 | 699 | 75.2 | 4.63 | 8.92 | 2 | 1 |

| | | | | | | | | | | | | | |
|------|----------------|------------|--|----|---|---|---|------|-------|-------|------|---|---|
| TRUE | Master Protein | A0A4X1VYE4 | 60S ribosomal protein L13a OS=Sus scrofa OX=9823 GN=RPL13A PE=3 SV=1 | 12 | 2 | 3 | 2 | 204 | 23.7 | 11.09 | 8.85 | 2 | 1 |
| TRUE | Master Protein | I3LDH3 | Poly [ADP-ribose] polymerase OS=Sus scrofa OX=9823 GN=PARP1 PE=1 SV=3 | 5 | 4 | 4 | 4 | 1017 | 113.1 | 8.87 | 8.82 | 4 | 1 |
| TRUE | Master Protein | A0A4X1W191 | DZF domain-containing protein OS=Sus scrofa OX=9823 GN=ILF2 PE=4 SV=1 | 12 | 3 | 3 | 3 | 390 | 43 | 5.26 | 8.77 | 3 | 1 |
| TRUE | Master Protein | P00355 | Glyceraldehyde-3-phosphate dehydrogenase OS=Sus scrofa OX=9823 GN=GAPDH PE=1 SV=4 | 15 | 3 | 3 | 3 | 333 | 35.8 | 8.35 | 8.72 | 3 | 1 |
| TRUE | Master Protein | Q06AS7 | GBI1 OS=Sus scrofa OX=9823 PE=2 SV=1 | 8 | 2 | 3 | 1 | 355 | 40.5 | 5.38 | 8.5 | 2 | 1 |
| TRUE | Master Protein | A0A480RU92 | Aspartate--tRNA ligase, cytoplasmic OS=Sus scrofa OX=9823 PE=3 SV=1 | 8 | 3 | 3 | 3 | 482 | 55 | 5.87 | 8.46 | 3 | 1 |
| TRUE | Master Protein | A0A287A4F2 | Splicing factor, proline-and glutamine-rich isoform X1 OS=Sus scrofa OX=9823 GN=SFPQ PE=4 SV=1 | 5 | 3 | 3 | 3 | 702 | 75.5 | 9.44 | 8.33 | 3 | 1 |
| TRUE | Master Protein | A0A287AQ2 | Phosphoglycerate mutase OS=Sus scrofa OX=9823 GN=PGAM1 PE=1 SV=1 | 16 | 3 | 3 | 3 | 254 | 28.8 | 7.18 | 8.14 | 3 | 1 |
| TRUE | Master Protein | A0A556HMS9 | RNA-binding protein 4B OS=Sus scrofa OX=9823 GN=RBM4B PE=1 SV=1 | 11 | 3 | 3 | 1 | 369 | 41.1 | 6.8 | 8.02 | 3 | 1 |
| TRUE | Master Protein | A0A5G2QD67 | Galectin OS=Sus scrofa OX=9823 GN=LGALS1 PE=1 SV=1 | 15 | 2 | 3 | 2 | 164 | 17.9 | 5.05 | 8.01 | 2 | 1 |
| TRUE | Master Protein | A0A287AY86 | Microtubule-associated protein OS=Sus scrofa OX=9823 GN=MAP4 PE=1 SV=1 | 2 | 3 | 3 | 3 | 2220 | 235.7 | 6.02 | 7.99 | 3 | 1 |
| TRUE | Master Protein | A0A4X1W115 | Small nuclear ribonucleoprotein Sm D2 OS=Sus scrofa OX=9823 GN=SNRPD2 PE=3 SV=1 | 16 | 2 | 3 | 2 | 118 | 13.5 | 9.91 | 7.89 | 2 | 1 |
| TRUE | Master Protein | A0A480LV60 | E3 SUMO-protein ligase RanBP2 isoform X6 OS=Sus scrofa OX=9823 PE=4 SV=1 | 1 | 3 | 3 | 3 | 3132 | 346.4 | 6.23 | 7.7 | 3 | 1 |
| TRUE | Master Protein | Q197W4 | Cyclin-dependent kinase 5 OS=Sus scrofa OX=9823 GN=CDK5 PE=1 SV=2 | 8 | 2 | 3 | 2 | 292 | 33.3 | 7.66 | 7.38 | 2 | 1 |
| TRUE | Master Protein | A0A287AFC3 | ELAV-like protein OS=Sus scrofa OX=9823 GN=ELAVL1 PE=1 SV=1 | 11 | 3 | 3 | 3 | 303 | 33.5 | 8.24 | 7.32 | 3 | 1 |
| TRUE | Master Protein | A0A480VB01 | U2 snRNP-associated SURP motif-containing protein isoform 2 OS=Sus scrofa OX=9823 PE=4 SV=1 | 4 | 3 | 3 | 3 | 1028 | 118.1 | 8.47 | 7.31 | 3 | 1 |
| TRUE | Master Protein | F1RUT1 | RNA-binding protein 4 isoform 1 OS=Sus scrofa OX=9823 GN=RBM14 PE=1 SV=3 | 11 | 3 | 3 | 1 | 365 | 40.4 | 7.08 | 7.23 | 3 | 1 |
| TRUE | Master Protein | F2Z5F5 | 40S ribosomal protein S8 OS=Sus scrofa OX=9823 GN=RPS8 PE=1 SV=3 | 11 | 2 | 3 | 2 | 208 | 24.2 | 10.32 | 7.18 | 2 | 1 |
| TRUE | Master Protein | A0A4X1UJS8 | V-type proton ATPase subunit OS=Sus scrofa OX=9823 GN=ATP6V0D1 PE=3 SV=1 | 11 | 3 | 3 | 3 | 351 | 40.3 | 5 | 7.11 | 3 | 1 |
| TRUE | Master Protein | A0A0B8RZ10 | Ubiquitin-activating enzyme E1 OS=Sus scrofa domesticus OX=9825 GN=UBA1 PE=3 SV=1 | 3 | 2 | 2 | 2 | 1058 | 117.7 | 5.85 | 7.1 | 2 | 1 |
| TRUE | Master Protein | A0A5G2R7S1 | LEM domain-containing protein OS=Sus scrofa OX=9823 GN=EMD PE=4 SV=1 | 7 | 1 | 2 | 1 | 224 | 24.9 | 4.87 | 7.05 | 1 | 1 |
| TRUE | Master Protein | A0A481C3R6 | Pre-mRNA-processing-splicing factor 8 isoform X1 OS=Sus scrofa OX=9823 PE=4 SV=1 | 2 | 2 | 2 | 2 | 1649 | 194.8 | 9.14 | 6.97 | 2 | 1 |

| | | | | | | | | | | | | | |
|------|----------------|------------|--|----|---|---|---|------|-------|-------|------|---|---|
| TRUE | Master Protein | A0A4X1VFI7 | ADP-ribosyl cyclase/cyclic ADP-ribose hydrolase OS=Sus scrofa OX=9823 PE=3 SV=1 | 11 | 2 | 2 | 2 | 289 | 32.1 | 6.3 | 6.95 | 2 | 1 |
| TRUE | Master Protein | A0A4X1VQM3 | Clathrin light chain OS=Sus scrofa OX=9823 PE=3 SV=1 | 14 | 2 | 2 | 2 | 211 | 23.1 | 4.53 | 6.91 | 2 | 1 |
| TRUE | Master Protein | A0A4X1SJ12 | Nop domain-containing protein OS=Sus scrofa OX=9823 GN=NOP56 PE=3 SV=1 | 6 | 3 | 3 | 3 | 596 | 66.1 | 9.36 | 6.85 | 3 | 1 |
| TRUE | Master Protein | A0A480V6N0 | Double-stranded RNA-specific adenosine deaminase isoform X5 OS=Sus scrofa OX=9823 PE=4 SV=1 | 4 | 2 | 2 | 2 | 617 | 68.9 | 9.38 | 6.76 | 2 | 1 |
| TRUE | Master Protein | Q29380 | Voltage-dependent anion-selective channel protein 3 OS=Sus scrofa OX=9823 GN=VDAC3 PE=2 SV=2 | 10 | 2 | 2 | 1 | 283 | 30.6 | 8.66 | 6.71 | 2 | 1 |
| TRUE | Master Protein | F1SIT7 | 60S acidic ribosomal protein P1 OS=Sus scrofa OX=9823 GN=RPLP1 PE=1 SV=1 | 29 | 2 | 2 | 2 | 114 | 11.5 | 4.32 | 6.57 | 2 | 1 |
| TRUE | Master Protein | A0A5G2R2A7 | 60S ribosomal protein L4 OS=Sus scrofa OX=9823 GN=RPL4 PE=1 SV=1 | 7 | 2 | 2 | 2 | 417 | 47.2 | 10.8 | 6.49 | 2 | 1 |
| TRUE | Master Protein | F1SA23 | Retinol dehydrogenase 12 OS=Sus scrofa OX=9823 GN=RDH12 PE=1 SV=2 | 11 | 3 | 3 | 3 | 316 | 35.1 | 9.63 | 6.48 | 3 | 1 |
| TRUE | Master Protein | A0A287A014 | 40S ribosomal protein S15a OS=Sus scrofa OX=9823 GN=RPS15A PE=1 SV=1 | 26 | 3 | 3 | 3 | 100 | 11.5 | 10.15 | 6.48 | 3 | 1 |
| TRUE | Master Protein | A0A480YVB6 | RNA helicase OS=Sus scrofa OX=9823 PE=4 SV=1 | 5 | 2 | 2 | 2 | 508 | 57.6 | 5.99 | 5.95 | 2 | 1 |
| TRUE | Master Protein | A0A287AUY5 | PWWP domain-containing protein OS=Sus scrofa OX=9823 GN=HDGFL3 PE=1 SV=1 | 8 | 1 | 2 | 1 | 203 | 22.6 | 7.99 | 5.85 | 1 | 1 |
| TRUE | Master Protein | A0A4X1VUP5 | PHB domain-containing protein OS=Sus scrofa OX=9823 GN=ERLIN2 PE=3 SV=1 | 7 | 2 | 2 | 2 | 363 | 40.2 | 6.2 | 5.84 | 2 | 1 |
| TRUE | Master Protein | A0A480WC71 | Band 4.1-like protein 2 isoform X7 OS=Sus scrofa OX=9823 PE=4 SV=1 | 4 | 2 | 2 | 2 | 865 | 96.4 | 5.58 | 5.83 | 2 | 1 |
| TRUE | Master Protein | A0A4X1UZN2 | V-type proton ATPase subunit G OS=Sus scrofa OX=9823 GN=ATP6V1G1 PE=3 SV=1 | 14 | 1 | 2 | 1 | 118 | 13.7 | 8.43 | 5.72 | 1 | 1 |
| TRUE | Master Protein | A0A480HRR5 | Elongation factor Tu OS=Sus scrofa OX=9823 PE=3 SV=1 | 5 | 2 | 2 | 2 | 566 | 61.3 | 8.32 | 5.71 | 2 | 1 |
| TRUE | Master Protein | A0A480EKD7 | Kin of IRRE-like protein 1 isoform X1 OS=Sus scrofa OX=9823 GN=KIRREL1 PE=4 SV=1 | 5 | 1 | 1 | 1 | 773 | 84.9 | 5.67 | 5.63 | 1 | 1 |
| TRUE | Master Protein | A0A4X1UE92 | Spectrin beta chain OS=Sus scrofa OX=9823 GN=SPTB PE=3 SV=1 | 1 | 2 | 2 | 1 | 2340 | 269.7 | 5.39 | 5.53 | 2 | 1 |
| TRUE | Master Protein | A0A4X1W661 | CSD_1 domain-containing protein OS=Sus scrofa OX=9823 GN=YBX1 PE=4 SV=1 | 19 | 2 | 2 | 2 | 324 | 35.9 | 9.88 | 5.52 | 2 | 1 |
| TRUE | Master Protein | F1S564 | RNA 3'-terminal phosphate cyclase OS=Sus scrofa OX=9823 GN=RTCA PE=1 SV=3 | 5 | 1 | 1 | 1 | 366 | 39.2 | 8.09 | 5.51 | 1 | 1 |
| TRUE | Master Protein | A0A4X1VUZ7 | Glutathione peroxidase OS=Sus scrofa OX=9823 GN=GPX4 PE=3 SV=1 | 15 | 2 | 2 | 2 | 197 | 22.2 | 8.31 | 5.49 | 2 | 1 |
| TRUE | Master Protein | F1RQ90 | RNA-binding motif protein, X chromosome isoform 1 OS=Sus scrofa OX=9823 GN=RBMX PE=1 SV=1 | 6 | 2 | 2 | 2 | 390 | 42.2 | 10.05 | 5.48 | 2 | 1 |
| TRUE | Master Protein | Q9GL64 | Transcription factor A (Fragment) OS=Sus scrofa OX=9823 GN=Tfam PE=2 SV=1 | 7 | 1 | 2 | 1 | 149 | 17.9 | 9.32 | 5.48 | 1 | 1 |

| | | | | | | | | | | | | | |
|------|----------------|-------------|---|----|---|---|---|------|-------|-------|------|---|---|
| TRUE | Master Protein | A1XQU9 | 40S ribosomal protein S20 OS=Sus scrofa OX=9823 GN=RPS20 PE=1 SV=1 | 15 | 2 | 2 | 2 | 119 | 13.3 | 9.94 | 5.42 | 2 | 1 |
| TRUE | Master Protein | A0A287A V76 | BAG domain-containing protein OS=Sus scrofa OX=9823 GN=BAG2 PE=1 SV=1 | 13 | 2 | 2 | 2 | 210 | 23.6 | 6.38 | 5.34 | 2 | 1 |
| TRUE | Master Protein | A0A4X1T DZ5 | Alpha(B)-crystallin OS=Sus scrofa OX=9823 GN=CRYAB PE=3 SV=1 | 9 | 2 | 2 | 2 | 237 | 27.6 | 9.73 | 5.28 | 2 | 1 |
| TRUE | Master Protein | A0A5G2Q DJ2 | Polyubiquitin-C OS=Sus scrofa OX=9823 GN=UBC PE=4 SV=1 | 37 | 2 | 2 | 2 | 837 | 94.1 | 7.68 | 5.23 | 2 | 1 |
| TRUE | Master Protein | A0A480P H82 | HIV Tat-specific factor 1 OS=Sus scrofa OX=9823 PE=3 SV=1 | 4 | 1 | 1 | 1 | 788 | 87.2 | 4.45 | 5.19 | 1 | 1 |
| TRUE | Master Protein | A0A480K S67 | FACT complex subunit SSRP1 OS=Sus scrofa OX=9823 PE=3 SV=1 | 5 | 2 | 2 | 2 | 655 | 75.2 | 7.53 | 5.17 | 2 | 1 |
| TRUE | Master Protein | Q2YGT9 | 60S ribosomal protein L6 OS=Sus scrofa OX=9823 GN=RPL6 PE=1 SV=3 | 9 | 2 | 2 | 2 | 284 | 32.2 | 10.73 | 5.14 | 2 | 1 |
| TRUE | Master Protein | A0A480IZ Z5 | Transcription activator BRG1 isoform X6 OS=Sus scrofa OX=9823 PE=3 SV=1 | 2 | 2 | 2 | 2 | 1617 | 181.6 | 8.07 | 5.14 | 2 | 1 |
| TRUE | Master Protein | A0A287B KP9 | von Willebrand factor A domain-containing protein 1 isoform 1 OS=Sus scrofa OX=9823 GN=VWA1 PE=1 SV=1 | 6 | 2 | 2 | 2 | 452 | 47.7 | 10.07 | 5.11 | 2 | 1 |
| TRUE | Master Protein | A0A2C9F 345 | U1 small nuclear ribonucleoprotein A OS=Sus scrofa OX=9823 GN=SNRPA PE=3 SV=1 | 10 | 2 | 2 | 2 | 281 | 31.2 | 9.83 | 5 | 2 | 1 |
| TRUE | Master Protein | F1S3F6 | Ceh-10 homeodomain-containing homolog OS=Sus scrofa OX=9823 GN=VSX2 PE=1 SV=3 | 4 | 1 | 2 | 1 | 361 | 39.3 | 6.96 | 4.93 | 1 | 1 |
| TRUE | Master Protein | A0A287B P50 | PITH domain-containing protein OS=Sus scrofa OX=9823 GN=TXNL1 PE=1 SV=1 | 8 | 1 | 1 | 1 | 285 | 31.9 | 4.89 | 4.91 | 1 | 1 |
| TRUE | Master Protein | I3LH70 | LAM_G_DOMAIN domain-containing protein OS=Sus scrofa OX=9823 GN=COL18A1 PE=1 SV=3 | 1 | 2 | 2 | 2 | 1613 | 162.8 | 8.28 | 4.9 | 2 | 1 |
| TRUE | Master Protein | A0A480V KU0 | Laminin subunit alpha-5 isoform X1 OS=Sus scrofa OX=9823 PE=4 SV=1 | 1 | 2 | 2 | 2 | 3484 | 374.4 | 6.81 | 4.89 | 2 | 1 |
| TRUE | Master Protein | F1DFL7 | Aminopeptidase OS=Sus scrofa OX=9823 PE=2 SV=1 | 3 | 2 | 2 | 2 | 963 | 108.8 | 5.25 | 4.78 | 2 | 1 |
| TRUE | Master Protein | A0A287A KP9 | RRM domain-containing protein OS=Sus scrofa OX=9823 GN=RALY PE=1 SV=1 | 5 | 2 | 2 | 2 | 365 | 37.9 | 9.28 | 4.78 | 2 | 1 |
| TRUE | Master Protein | A0A481D HP5 | 40S ribosomal protein S25 (Fragment) OS=Sus scrofa OX=9823 PE=3 SV=1 | 14 | 2 | 2 | 2 | 138 | 14.9 | 10.11 | 4.75 | 2 | 1 |
| TRUE | Master Protein | F1SFF4 | RNA transcription, translation and transport factor protein OS=Sus scrofa OX=9823 GN=RTRAF PE=1 SV=1 | 7 | 1 | 1 | 1 | 244 | 28 | 6.65 | 4.75 | 1 | 1 |
| TRUE | Master Protein | A0A480J4 Z3 | Ubiquitin carboxyl-terminal hydrolase OS=Sus scrofa OX=9823 PE=3 SV=1 | 3 | 2 | 2 | 2 | 835 | 93.4 | 5.1 | 4.73 | 2 | 1 |
| TRUE | Master Protein | A0A4X1T 8H6 | Phosphodiesterase OS=Sus scrofa OX=9823 PE=3 SV=1 | 2 | 2 | 2 | 2 | 862 | 99.6 | 5.77 | 4.67 | 2 | 1 |
| TRUE | Master Protein | A0A4X1U VB3 | Protein lin-7 homolog OS=Sus scrofa OX=9823 GN=LIN7A PE=3 SV=1 | 8 | 2 | 2 | 2 | 233 | 26 | 8.72 | 4.66 | 2 | 1 |
| TRUE | Master Protein | A0A4X1V R00 | Dynamin-1-like protein OS=Sus scrofa OX=9823 GN=DNM1L PE=3 SV=1 | 4 | 2 | 2 | 2 | 725 | 80.5 | 6.71 | 4.63 | 2 | 1 |

| | | | | | | | | | | | | | |
|------|----------------|------------|---|----|---|---|---|------|-------|-------|------|---|---|
| TRUE | Master Protein | A0A480VGI2 | DNA helicase OS=Sus scrofa OX=9823 PE=3 SV=1 | 2 | 2 | 2 | 2 | 1220 | 138.9 | 7.06 | 4.6 | 2 | 1 |
| TRUE | Master Protein | I3LSE4 | Protein kinase domain-containing protein OS=Sus scrofa OX=9823 GN=CAMKV PE=1 SV=3 | 5 | 2 | 2 | 2 | 559 | 60.5 | 6.49 | 4.56 | 2 | 1 |
| TRUE | Master Protein | A0A287AVQ1 | RNA helicase OS=Sus scrofa OX=9823 GN=DDX3X PE=1 SV=1 | 3 | 2 | 2 | 1 | 659 | 72.9 | 7.59 | 4.56 | 2 | 1 |
| TRUE | Master Protein | A0A480TW29 | Serine/arginine-rich splicing factor 2 (Fragment) OS=Sus scrofa OX=9823 PE=3 SV=1 | 8 | 2 | 2 | 2 | 211 | 24.4 | 11.97 | 4.5 | 2 | 1 |
| TRUE | Master Protein | I3LQX0 | SUN domain-containing protein OS=Sus scrofa OX=9823 GN=SUN1 PE=1 SV=3 | 3 | 2 | 2 | 2 | 717 | 77.9 | 7.05 | 4.47 | 2 | 1 |
| TRUE | Master Protein | A0A5G2RAE1 | RNA helicase OS=Sus scrofa OX=9823 GN=DDX46 PE=1 SV=1 | 2 | 2 | 2 | 2 | 1032 | 117.3 | 9.29 | 4.46 | 2 | 1 |
| TRUE | Master Protein | A0A480TAZ5 | SWI/SNF-related matrix-associated actin-dependent regulator of chromatin subfamily A member 5 OS=Sus scrofa OX=9823 PE=3 SV=1 | 2 | 2 | 2 | 2 | 1052 | 121.8 | 8.31 | 4.46 | 2 | 1 |
| TRUE | Master Protein | A0A287BCK8 | Fibroblast growth factor OS=Sus scrofa OX=9823 GN=FGF2 PE=1 SV=1 | 6 | 2 | 2 | 2 | 316 | 33.6 | 11.4 | 4.4 | 2 | 1 |
| TRUE | Master Protein | A0A480QSC0 | Amino acid transporter OS=Sus scrofa OX=9823 PE=3 SV=1 | 3 | 1 | 1 | 1 | 447 | 49.6 | 9.54 | 4.38 | 1 | 1 |
| TRUE | Master Protein | A0A5G2R4Z1 | Sorting nexin-3 OS=Sus scrofa OX=9823 GN=SNX3 PE=1 SV=1 | 13 | 2 | 2 | 2 | 162 | 18.8 | 8.66 | 4.27 | 2 | 1 |
| TRUE | Master Protein | A0A287AKE5 | Protein lin-7 homolog OS=Sus scrofa OX=9823 GN=LIN7C PE=1 SV=2 | 10 | 2 | 2 | 2 | 199 | 22 | 7.85 | 4.23 | 2 | 1 |
| TRUE | Master Protein | A0A5G2QQC6 | Mediator of DNA damage checkpoint protein 1 OS=Sus scrofa OX=9823 GN=MDC1 PE=4 SV=1 | 1 | 1 | 1 | 1 | 2047 | 218.5 | 5.45 | 4.23 | 1 | 1 |
| TRUE | Master Protein | A0A480TIY8 | General transcription factor 3C polypeptide 5 isoform 2 OS=Sus scrofa OX=9823 PE=4 SV=1 | 4 | 2 | 2 | 2 | 513 | 58.7 | 7.03 | 4.2 | 2 | 1 |
| TRUE | Master Protein | A0A4X1UA50 | Nucleoporin_C domain-containing protein OS=Sus scrofa OX=9823 GN=NUP133 PE=3 SV=1 | 2 | 1 | 1 | 1 | 1141 | 127.3 | 5.21 | 4.18 | 1 | 1 |
| TRUE | Master Protein | A0A287AGK7 | DNA helicase OS=Sus scrofa OX=9823 GN=CHD2 PE=4 SV=1 | 1 | 2 | 2 | 2 | 1781 | 205.5 | 7.53 | 4.16 | 2 | 1 |
| TRUE | Master Protein | A0A4X1UFA1 | Ribosomal protein L19 OS=Sus scrofa OX=9823 PE=3 SV=1 | 14 | 2 | 2 | 2 | 181 | 21.4 | 11.84 | 4.15 | 2 | 1 |
| TRUE | Master Protein | A0A287BOT7 | Chromobox protein homolog 3 isoform X1 OS=Sus scrofa OX=9823 GN=CBX3 PE=1 SV=1 | 14 | 2 | 2 | 2 | 183 | 20.8 | 5.33 | 4.14 | 2 | 1 |
| TRUE | Master Protein | A0A4X1WBN0 | IF rod domain-containing protein OS=Sus scrofa OX=9823 PE=3 SV=1 | 3 | 2 | 2 | 1 | 565 | 60.5 | 8.22 | 4.11 | 2 | 1 |
| TRUE | Master Protein | F1RQ91 | 40S ribosomal protein S4 OS=Sus scrofa OX=9823 GN=RPS4X PE=1 SV=3 | 5 | 1 | 1 | 1 | 242 | 27.6 | 10.08 | 4.06 | 1 | 1 |
| TRUE | Master Protein | A0A480N4X7 | 40S ribosomal protein S26 OS=Sus scrofa OX=9823 PE=3 SV=1 | 14 | 1 | 1 | 1 | 107 | 12.2 | 10.83 | 3.95 | 1 | 1 |
| TRUE | Master Protein | A0A287A4C0 | DUF3504 domain-containing protein OS=Sus scrofa OX=9823 GN=QRICH1 PE=4 SV=1 | 2 | 1 | 1 | 1 | 779 | 86.8 | 5.95 | 3.94 | 1 | 1 |
| TRUE | Master Protein | A0A4X1TH39 | DZF domain-containing protein OS=Sus scrofa OX=9823 GN=ZFR PE=4 SV=1 | 2 | 1 | 1 | 1 | 1003 | 109.4 | 9.23 | 3.89 | 1 | 1 |

| | | | | | | | | | | | | | |
|------|----------------|------------|--|----|---|---|---|------|-------|-------|------|---|---|
| TRUE | Master Protein | A0A5G2QJ52 | 14_3_3 domain-containing protein OS=Sus scrofa OX=9823 GN=CRK PE=1 SV=1 | 5 | 1 | 1 | 1 | 266 | 30.5 | 6.43 | 3.72 | 1 | 1 |
| TRUE | Master Protein | D3K5K3 | DNA mismatch repair protein OS=Sus scrofa OX=9823 GN=MSH2 PE=2 SV=1 | 2 | 1 | 1 | 1 | 934 | 104.5 | 5.64 | 3.7 | 1 | 1 |
| TRUE | Master Protein | A0A287AC97 | MICOS complex subunit MIC19 isoform 2 OS=Sus scrofa OX=9823 GN=CHCHD3 PE=1 SV=1 | 6 | 1 | 1 | 1 | 235 | 27.2 | 8.19 | 3.7 | 1 | 1 |
| TRUE | Master Protein | A0A480KG54 | Ciliary neurotrophic factor receptor subunit alpha OS=Sus scrofa OX=9823 PE=3 SV=1 | 6 | 1 | 1 | 1 | 372 | 40.9 | 6.95 | 3.68 | 1 | 1 |
| TRUE | Master Protein | F1RLT6 | Guanine nucleotide-binding protein G(Z) subunit alpha OS=Sus scrofa OX=9823 GN=GNAZ PE=1 SV=1 | 4 | 1 | 1 | 1 | 355 | 40.7 | 7.61 | 3.65 | 1 | 1 |
| TRUE | Master Protein | Q29375 | 60S ribosomal protein L7a (Fragment) OS=Sus scrofa OX=9823 GN=RPL7A PE=2 SV=1 | 11 | 1 | 1 | 1 | 132 | 14.6 | 10.14 | 3.56 | 1 | 1 |
| TRUE | Master Protein | A0A4X1TVR0 | DNA-directed RNA polymerase subunit beta OS=Sus scrofa OX=9823 PE=3 SV=1 | 2 | 1 | 1 | 1 | 1196 | 135.9 | 7.88 | 3.54 | 1 | 1 |
| TRUE | Master Protein | A0A480L1A5 | Regulator of microtubule dynamics protein 3 isoform 1 OS=Sus scrofa OX=9823 PE=4 SV=1 | 3 | 1 | 1 | 1 | 496 | 54.5 | 5.47 | 3.53 | 1 | 1 |
| TRUE | Master Protein | A0A5G2QJ8 | Importin subunit alpha OS=Sus scrofa OX=9823 GN=KPNA1 PE=1 SV=1 | 3 | 1 | 1 | 1 | 531 | 59.4 | 4.97 | 3.47 | 1 | 1 |
| TRUE | Master Protein | A0A480V6Z4 | ATP synthase subunit alpha, mitochondrial isoform a OS=Sus scrofa OX=9823 PE=3 SV=1 | 5 | 1 | 1 | 1 | 323 | 34.6 | 9.44 | 3.46 | 1 | 1 |
| TRUE | Master Protein | F1SQA9 | GATOR complex protein SEC13 OS=Sus scrofa OX=9823 GN=SEC13 PE=1 SV=4 | 5 | 1 | 1 | 1 | 333 | 36.7 | 5.48 | 3.44 | 1 | 1 |
| TRUE | Master Protein | F1SUT1 | Pleckstrin homology domain-containing family B member 1 isoform a OS=Sus scrofa OX=9823 GN=PLEKHB1 PE=1 SV=3 | 10 | 1 | 1 | 1 | 224 | 25.4 | 8.46 | 3.38 | 1 | 1 |
| TRUE | Master Protein | A0A5G2Q7N6 | 60S ribosomal protein L11 OS=Sus scrofa OX=9823 GN=RPL11 PE=3 SV=1 | 7 | 1 | 1 | 1 | 192 | 22 | 9.72 | 3.24 | 1 | 1 |
| TRUE | Master Protein | A0A287AHC5 | Guanine nucleotide-binding protein subunit gamma OS=Sus scrofa OX=9823 PE=3 SV=1 | 21 | 1 | 1 | 1 | 68 | 7.5 | 8.51 | 3.24 | 1 | 1 |
| TRUE | Master Protein | P01965 | Hemoglobin subunit alpha OS=Sus scrofa OX=9823 GN=HBA PE=1 SV=1 | 11 | 1 | 1 | 1 | 141 | 15 | 8.7 | 3.19 | 1 | 1 |
| TRUE | Master Protein | F2YI04 | Fas apoptosis inhibitory molecule 1 OS=Sus scrofa OX=9823 GN=FAIM1 PE=2 SV=1 | 8 | 1 | 1 | 1 | 200 | 22.5 | 5.02 | 3.18 | 1 | 1 |
| TRUE | Master Protein | A0A287B8N1 | ATP-dependent 6-phosphofructokinase OS=Sus scrofa OX=9823 GN=PFKM PE=1 SV=1 | 3 | 1 | 1 | 1 | 809 | 88.9 | 8.34 | 3.18 | 1 | 1 |
| TRUE | Master Protein | A0A4X1W398 | AAA domain-containing protein OS=Sus scrofa OX=9823 GN=LOC100525876 PE=3 SV=1 | 2 | 1 | 1 | 1 | 493 | 56.3 | 9.5 | 3.15 | 1 | 1 |
| TRUE | Master Protein | A0A480VOY7 | Metastasis-associated protein MTA1 isoform MTA1s OS=Sus scrofa OX=9823 PE=4 SV=1 | 2 | 1 | 1 | 1 | 429 | 48.7 | 5.5 | 3.14 | 1 | 1 |
| TRUE | Master Protein | A0A480TKG0 | Nuclear pore complex protein Nup155 isoform 1 OS=Sus scrofa OX=9823 PE=3 SV=1 | 1 | 1 | 1 | 1 | 1392 | 155.2 | 6.3 | 3.11 | 1 | 1 |
| TRUE | Master Protein | I3LK59 | 2-phospho-D-glycerate hydro-lyase OS=Sus scrofa OX=9823 GN=ENO1 PE=1 SV=3 | 4 | 1 | 1 | 1 | 434 | 47.1 | 7.14 | 3.1 | 1 | 1 |
| TRUE | Master Protein | A0A4X1U612 | ANK_REP_REGION domain-containing protein OS=Sus scrofa OX=9823 GN=ANKRD10 PE=4 SV=1 | 14 | 1 | 1 | 1 | 161 | 17 | 6.77 | 3.07 | 1 | 1 |

| | | | | | | | | | | | | | |
|------|----------------|------------|--|----|---|---|---|------|-------|-------|------|---|---|
| TRUE | Master Protein | A0A4X1T7A1 | RRM domain-containing protein OS=Sus scrofa OX=9823 GN=MSI1 PE=3 SV=1 | 5 | 1 | 1 | 1 | 311 | 33.5 | 9.17 | 3.02 | 1 | 1 |
| TRUE | Master Protein | F2Z594 | High mobility group protein B1 OS=Sus scrofa OX=9823 GN=HMGB1 PE=1 SV=3 | 5 | 1 | 1 | 1 | 220 | 25.3 | 9.95 | 3.01 | 1 | 1 |
| TRUE | Master Protein | A0A481B6W1 | Peptidyl-prolyl cis-trans isomerase OS=Sus scrofa OX=9823 PE=3 SV=1 | 3 | 1 | 1 | 1 | 492 | 57.2 | 5.94 | 3.01 | 1 | 1 |
| TRUE | Master Protein | A0A4X1U3M8 | Mitochondrial fission factor OS=Sus scrofa OX=9823 GN=MFF PE=3 SV=1 | 6 | 1 | 1 | 1 | 237 | 27 | 6.62 | 2.98 | 1 | 1 |
| TRUE | Master Protein | A0A480LR40 | Tricarboxylate transport protein, mitochondrial isoform a (Fragment) OS=Sus scrofa OX=9823 PE=3 SV=1 | 3 | 1 | 1 | 1 | 395 | 42.8 | 10.46 | 2.98 | 1 | 1 |
| TRUE | Master Protein | A0A5G2R2K0 | RNA helicase aquarius OS=Sus scrofa OX=9823 GN=AQR PE=1 SV=1 | 1 | 1 | 1 | 1 | 1485 | 170.7 | 6.4 | 2.95 | 1 | 1 |
| TRUE | Master Protein | A0A4X1UDF8 | 60S ribosomal protein L32 OS=Sus scrofa OX=9823 GN=RPL32 PE=3 SV=1 | 7 | 1 | 1 | 1 | 149 | 17.5 | 11.05 | 2.94 | 1 | 1 |
| TRUE | Master Protein | A0A480PKL9 | Prospero homeobox protein 1 isoform X2 OS=Sus scrofa OX=9823 PE=4 SV=1 | 3 | 1 | 1 | 1 | 607 | 67.6 | 7.83 | 2.92 | 1 | 1 |
| TRUE | Master Protein | A0A481D0A9 | Biglycan OS=Sus scrofa OX=9823 PE=3 SV=1 | 3 | 1 | 1 | 1 | 488 | 53.3 | 9.06 | 2.88 | 1 | 1 |
| TRUE | Master Protein | A0A4X1VZ98 | V-type proton ATPase subunit F OS=Sus scrofa OX=9823 PE=3 SV=1 | 10 | 1 | 1 | 1 | 118 | 13.2 | 5.3 | 2.88 | 1 | 1 |
| TRUE | Master Protein | Q19PY3 | RNA-splicing ligase RtcB homolog OS=Sus scrofa OX=9823 GN=RTCB PE=2 SV=1 | 2 | 1 | 1 | 1 | 505 | 55.2 | 7.23 | 2.88 | 1 | 1 |
| TRUE | Master Protein | F1RWX5 | ATPase WRNIP1 isoform 1 OS=Sus scrofa OX=9823 GN=WRNIP1 PE=1 SV=2 | 2 | 1 | 1 | 1 | 638 | 69 | 6.34 | 2.88 | 1 | 1 |
| TRUE | Master Protein | A0A4X1UUF9 | Nucleolar protein 10 OS=Sus scrofa OX=9823 GN=NOP10 PE=3 SV=1 | 20 | 1 | 1 | 1 | 64 | 7.6 | 9.99 | 2.83 | 1 | 1 |
| TRUE | Master Protein | A0A480N9L6 | Non-specific serine/threonine protein kinase OS=Sus scrofa OX=9823 PE=4 SV=1 | 5 | 1 | 1 | 1 | 1083 | 115.3 | 8.57 | 2.78 | 1 | 1 |
| TRUE | Master Protein | A0A4X1V3M7 | Small nuclear ribonucleoprotein E OS=Sus scrofa OX=9823 GN=SNRPE PE=3 SV=1 | 12 | 1 | 1 | 1 | 92 | 10.8 | 9.44 | 2.77 | 1 | 1 |
| TRUE | Master Protein | A0A287A5P3 | 116 kDa U5 small nuclear ribonucleoprotein component OS=Sus scrofa OX=9823 GN=EF-TUD2 PE=1 SV=2 | 1 | 1 | 1 | 1 | 937 | 105.4 | 5.22 | 2.76 | 1 | 1 |
| TRUE | Master Protein | A0A4X1VSZ6 | SUN domain-containing protein OS=Sus scrofa OX=9823 GN=SUN2 PE=4 SV=1 | 2 | 1 | 1 | 1 | 713 | 79.7 | 7.02 | 2.75 | 1 | 1 |
| TRUE | Master Protein | A0A480N4J2 | Histone deacetylase OS=Sus scrofa OX=9823 PE=3 SV=1 | 3 | 1 | 1 | 1 | 359 | 40.7 | 7.46 | 2.74 | 1 | 1 |
| TRUE | Master Protein | A0A4X1SK8 | 40S ribosomal protein S24 OS=Sus scrofa OX=9823 GN=RPS24 PE=1 SV=1 | 11 | 1 | 1 | 1 | 132 | 15.3 | 10.92 | 2.73 | 1 | 1 |
| TRUE | Master Protein | I3LI59 | RNA-binding protein 8A OS=Sus scrofa OX=9823 GN=RBM8A PE=1 SV=2 | 6 | 1 | 1 | 1 | 174 | 19.9 | 5.72 | 2.71 | 1 | 1 |
| TRUE | Master Protein | A0A480VPD1 | 26S proteasome regulatory subunit 6A (Fragment) OS=Sus scrofa OX=9823 PE=3 SV=1 | 4 | 1 | 1 | 1 | 446 | 50.1 | 5.29 | 2.7 | 1 | 1 |
| TRUE | Master Protein | A0A4X1TM87 | PKD domain-containing protein OS=Sus scrofa OX=9823 PE=3 SV=1 | 4 | 1 | 1 | 1 | 1077 | 119.6 | 7.28 | 2.7 | 1 | 1 |

| | | | | | | | | | | | | | |
|------|----------------|------------|---|----|---|---|---|------|-------|-------|------|---|---|
| TRUE | Master Protein | A0A4X1U78 | tRNA-binding domain-containing protein OS=Sus scrofa OX=9823 GN=AIMP1 PE=4 SV=1 | 4 | 1 | 1 | 1 | 335 | 37.5 | 6.8 | 2.7 | 1 | 1 |
| TRUE | Master Protein | A0A4X1VUM6 | Cold-inducible RNA-binding protein OS=Sus scrofa OX=9823 GN=DAZAP1 PE=4 SV=1 | 5 | 1 | 1 | 1 | 231 | 24.9 | 7.97 | 2.66 | 1 | 1 |
| TRUE | Master Protein | I3LBT8 | Small nuclear ribonucleoprotein-associated protein OS=Sus scrofa OX=9823 GN=SNRPN PE=3 SV=3 | 4 | 1 | 1 | 1 | 250 | 26.1 | 10.7 | 2.64 | 1 | 1 |
| TRUE | Master Protein | A0A287ADF7 | Prohibitin OS=Sus scrofa OX=9823 GN=PHB PE=1 SV=1 | 5 | 1 | 1 | 1 | 256 | 28.3 | 6.02 | 2.55 | 1 | 1 |
| TRUE | Master Protein | A0A4X1TF03 | C2 domain-containing protein OS=Sus scrofa OX=9823 PE=4 SV=1 | 3 | 1 | 1 | 1 | 684 | 73.4 | 6.7 | 2.55 | 1 | 1 |
| TRUE | Master Protein | F2Z4Y8 | 40S ribosomal protein S11 OS=Sus scrofa OX=9823 GN=RPS11 PE=1 SV=1 | 7 | 1 | 1 | 1 | 158 | 18.4 | 10.3 | 2.54 | 1 | 1 |
| TRUE | Master Protein | A0A4X1TUV5 | U2 snRNP auxiliary factor large subunit OS=Sus scrofa OX=9823 GN=U2AF2 PE=3 SV=1 | 2 | 1 | 1 | 1 | 456 | 51.4 | 8.82 | 2.54 | 1 | 1 |
| TRUE | Master Protein | A0A480JP88 | E3 ubiquitin-protein ligase OS=Sus scrofa OX=9823 PE=4 SV=1 | 1 | 1 | 1 | 1 | 929 | 105.6 | 6.14 | 2.53 | 1 | 1 |
| TRUE | Master Protein | A0A4X1VZZ5 | S_100 domain-containing protein OS=Sus scrofa OX=9823 GN=S100A14 PE=4 SV=1 | 14 | 1 | 1 | 1 | 104 | 11.4 | 4.78 | 2.53 | 1 | 1 |
| TRUE | Master Protein | A0A480YQ07 | Cell cycle and apoptosis regulator protein 2 OS=Sus scrofa OX=9823 PE=4 SV=1 | 2 | 1 | 1 | 1 | 759 | 83.4 | 5.38 | 2.53 | 1 | 1 |
| TRUE | Master Protein | A0A5S8KL32 | Protein-serine/threonine phosphatase OS=Sus scrofa OX=9823 GN=PPP1CB PE=1 SV=1 | 5 | 1 | 1 | 1 | 303 | 34.4 | 6.4 | 2.52 | 1 | 1 |
| TRUE | Master Protein | A0A4X1SET4 | RRM domain-containing protein OS=Sus scrofa OX=9823 GN=NIFK PE=4 SV=1 | 4 | 1 | 1 | 1 | 294 | 34 | 10.15 | 2.52 | 1 | 1 |
| TRUE | Master Protein | A0A4X1TVZ8 | Nuclear cap-binding protein subunit 2 OS=Sus scrofa OX=9823 GN=NCBP2 PE=3 SV=1 | 7 | 1 | 1 | 1 | 156 | 18 | 8.21 | 2.51 | 1 | 1 |
| TRUE | Master Protein | A0A286ZQJ3 | SMP_C2CD2L domain-containing protein OS=Sus scrofa OX=9823 GN=C2CD2L PE=1 SV=1 | 1 | 1 | 1 | 1 | 669 | 71.7 | 8.32 | 2.51 | 1 | 1 |
| TRUE | Master Protein | A0A5G2QY32 | RPOLD domain-containing protein OS=Sus scrofa OX=9823 GN=POLR2C PE=1 SV=1 | 7 | 1 | 1 | 1 | 275 | 31.3 | 4.96 | 2.5 | 1 | 1 |
| TRUE | Master Protein | A0A287A8V1 | RNA helicase OS=Sus scrofa OX=9823 GN=EIF4A1 PE=1 SV=1 | 3 | 1 | 1 | 1 | 390 | 44.5 | 5.57 | 2.48 | 1 | 1 |
| TRUE | Master Protein | A0A480U187 | H/ACA ribonucleoprotein complex subunit 4 isoform 1 OS=Sus scrofa OX=9823 PE=3 SV=1 | 2 | 1 | 1 | 1 | 521 | 58.1 | 9.47 | 2.48 | 1 | 1 |
| TRUE | Master Protein | A0A287APR1 | 60S ribosomal protein L18a OS=Sus scrofa OX=9823 GN=RPL18A PE=1 SV=1 | 6 | 1 | 1 | 1 | 224 | 26 | 10.92 | 2.48 | 1 | 1 |
| TRUE | Master Protein | I3LNY6 | IF rod domain-containing protein OS=Sus scrofa OX=9823 GN=NES PE=1 SV=2 | 1 | 1 | 1 | 1 | 1699 | 184.7 | 4.36 | 2.47 | 1 | 1 |
| TRUE | Master Protein | A0A480TWW0 | Signal transducer and activator of transcription OS=Sus scrofa OX=9823 PE=3 SV=1 | 1 | 1 | 1 | 1 | 787 | 89.9 | 6.11 | 2.46 | 1 | 1 |
| TRUE | Master Protein | A0A4X1VLL6 | BTB domain-containing protein OS=Sus scrofa OX=9823 PE=4 SV=1 | 2 | 1 | 1 | 1 | 490 | 53.6 | 9.16 | 2.46 | 1 | 1 |
| TRUE | Master Protein | A0A5S6HGD8 | Non-histone chromosomal protein HMG-17 OS=Sus scrofa OX=9823 GN=HMGN2 PE=3 SV=1 | 16 | 1 | 1 | 1 | 90 | 9.3 | 9.8 | 2.44 | 1 | 1 |

| | | | | | | | | | | | | | |
|------|----------------|----------------|--|----|---|---|---|------|-------|-------|------|---|---|
| TRUE | Master Protein | A0A0U2V PN4 | Estrogen related receptor gamma 1 OS=Sus scrofa OX=9823 GN=ESRRG1 PE=2 SV=1 | 5 | 1 | 1 | 1 | 458 | 51.2 | 6.48 | 2.44 | 1 | 1 |
| TRUE | Master Protein | A0A287A WS4 | 60S ribosomal protein L27a OS=Sus scrofa OX=9823 GN=RPL27A PE=1 SV=2 | 7 | 1 | 1 | 1 | 148 | 16.6 | 11.12 | 2.43 | 1 | 1 |
| TRUE | Master Protein | A0A480N BM2 | Splicing factor 3B subunit 2 OS=Sus scrofa OX=9823 PE=4 SV=1 | 1 | 1 | 1 | 1 | 732 | 82.5 | 5.69 | 2.43 | 1 | 1 |
| TRUE | Master Protein | A0A4X1T XJ8 | 60S ribosomal protein L30 OS=Sus scrofa OX=9823 GN=RPL30 PE=1 SV=1 | 10 | 1 | 1 | 1 | 115 | 12.8 | 9.63 | 2.42 | 1 | 1 |
| TRUE | Master Protein | A0A0B8R SW3 | Glyoxylate reductase 1 homolog OS=Sus scrofa domesticus OX=9825 GN=GLYR1 PE=3 SV=1 | 2 | 1 | 1 | 1 | 547 | 59.8 | 9.26 | 2.41 | 1 | 1 |
| TRUE | Master Protein | A0A287A TC4 | PRP6 homolog OS=Sus scrofa OX=9823 GN=PRPF6 PE=1 SV=1 | 1 | 1 | 1 | 1 | 1150 | 128.1 | 9.09 | 2.4 | 1 | 1 |
| TRUE | Master Protein | A0A0B8R TA7 | RNA binding motif protein 25 OS=Sus scrofa domesticus OX=9825 GN=RBM25 PE=4 SV=1 | 2 | 1 | 1 | 1 | 843 | 100.1 | 6.32 | 2.37 | 1 | 1 |
| TRUE | Master Protein | A0A287A X73 | KASH domain-containing protein OS=Sus scrofa OX=9823 GN=SYNE3 PE=1 SV=1 | 1 | 1 | 1 | 1 | 975 | 111.7 | 6.57 | 2.37 | 1 | 1 |
| TRUE | Master Protein | A0A4X1T HZ5 | Ig-like domain-containing protein OS=Sus scrofa OX=9823 PE=4 SV=1 | 16 | 1 | 1 | 1 | 112 | 11.9 | 8.29 | 2.37 | 1 | 1 |
| TRUE | Master Protein | A0A4X1U CP4 | Homeobox protein NK-2 homolog E OS=Sus scrofa OX=9823 GN=NKX2-5 PE=3 SV=1 | 8 | 1 | 1 | 1 | 323 | 34.6 | 9.29 | 2.37 | 1 | 1 |
| TRUE | Master Protein | A0A4X1V HE8 | Glutamate dehydrogenase (NAD(P)(+)) OS=Sus scrofa OX=9823 GN=GLUD1 PE=3 SV=1 | 2 | 1 | 1 | 1 | 558 | 61.3 | 7.96 | 2.36 | 1 | 1 |
| TRUE | Master Protein | A0A287A EM2 | 40S ribosomal protein S5 OS=Sus scrofa OX=9823 GN=RPS5 PE=1 SV=1 | 7 | 1 | 1 | 1 | 229 | 25.3 | 9.63 | 2.36 | 1 | 1 |
| TRUE | Master Protein | A0A4X1SZ J9 | Peptidylprolyl isomerase OS=Sus scrofa OX=9823 GN=FKBP5 PE=4 SV=1 | 2 | 1 | 1 | 1 | 465 | 52.2 | 5.69 | 2.36 | 1 | 1 |
| TRUE | Master Protein | A0A287BJ K8 | MTTase N-terminal domain-containing protein OS=Sus scrofa OX=9823 GN=CDKAL1 PE=4 SV=1 | 5 | 1 | 1 | 1 | 550 | 61.7 | 8.31 | 2.35 | 1 | 1 |
| TRUE | Master Protein | I3LP32 | Pre-mRNA-splicing factor 38A OS=Sus scrofa OX=9823 GN=PRPF38A PE=3 SV=2 | 4 | 1 | 1 | 1 | 312 | 37.5 | 9.96 | 2.35 | 1 | 1 |
| TRUE | Master Protein | A0A4X1V CR4 | Creatine kinase OS=Sus scrofa OX=9823 GN=CKMT1A PE=3 SV=1 | 4 | 1 | 1 | 1 | 342 | 38.5 | 8.03 | 2.3 | 1 | 1 |
| TRUE | Master Protein | A0A4X1U OQ7 | RuvB-like helicase OS=Sus scrofa OX=9823 GN=RUVBL1 PE=3 SV=1 | 2 | 1 | 1 | 1 | 456 | 50.2 | 6.42 | 2.29 | 1 | 1 |
| TRUE | Master Protein | Q9GMB0 | Dolichyl-diphosphooligosaccharide--protein glycosyltransferase subunit 1 OS=Sus scrofa OX=9823 GN=RPN1 PE=1 SV=1 | 2 | 1 | 1 | 1 | 608 | 68.7 | 6.55 | 2.27 | 1 | 1 |
| TRUE | Master Protein | F1S0S8 | General transcription factor 3C polypeptide 4 OS=Sus scrofa OX=9823 GN=GTF3C4 PE=1 SV=2 | 1 | 1 | 1 | 1 | 679 | 76.7 | 7.36 | 2.26 | 1 | 1 |
| TRUE | Master Protein | F1S4S0 | Homeobox domain-containing protein OS=Sus scrofa OX=9823 GN=VAX1 PE=3 SV=1 | 3 | 1 | 1 | 1 | 333 | 34.6 | 9.38 | 2.22 | 1 | 1 |
| TRUE | Master Protein | A0A480N QW0 | CUGBP Elav-like family member 2 isoform 2 OS=Sus scrofa OX=9823 PE=3 SV=1 | 2 | 1 | 1 | 1 | 521 | 55.7 | 8.6 | 2.21 | 1 | 1 |
| TRUE | Master Protein | A0A287A 286 | TRASH domain-containing protein OS=Sus scrofa OX=9823 GN=RPL24 PE=1 SV=1 | 4 | 1 | 1 | 1 | 217 | 24.7 | 11.5 | 2.21 | 1 | 1 |

| | | | | | | | | | | | | | |
|------|----------------|------------|---|---|---|---|---|------|-------|-------|------|---|---|
| TRUE | Master Protein | A0A287A961 | Nipped-B protein OS=Sus scrofa OX=9823 GN=NIPBL PE=3 SV=2 | 0 | 1 | 1 | 1 | 2722 | 306.7 | 7.94 | 2.2 | 1 | 1 |
| TRUE | Master Protein | A0A286ZW96 | Homeobox domain-containing protein OS=Sus scrofa OX=9823 GN=SIX3 PE=4 SV=2 | 5 | 1 | 1 | 1 | 333 | 35.5 | 8.63 | 2.18 | 1 | 1 |
| TRUE | Master Protein | A0A4X1SEZ3 | Poly [ADP-ribose] polymerase OS=Sus scrofa OX=9823 PE=4 SV=1 | 3 | 1 | 1 | 1 | 502 | 56.2 | 8.78 | 2.18 | 1 | 1 |
| TRUE | Master Protein | A0A287B8G0 | Multifunctional fusion protein OS=Sus scrofa OX=9823 GN=PKM PE=1 SV=2 | 1 | 1 | 1 | 1 | 1090 | 121.2 | 7.96 | 2.18 | 1 | 1 |
| TRUE | Master Protein | A0A4X1TZH0 | Enhancer of rudimentary homolog OS=Sus scrofa OX=9823 PE=3 SV=1 | 7 | 1 | 1 | 1 | 176 | 20.2 | 6.2 | 2.17 | 1 | 1 |
| TRUE | Master Protein | A0A5G2QT89 | B-block_TFIIC domain-containing protein OS=Sus scrofa OX=9823 GN=GTF3C1 PE=1 SV=1 | 0 | 1 | 1 | 1 | 2012 | 227.1 | 7.74 | 2.17 | 1 | 1 |
| TRUE | Master Protein | A0A287AGI3 | Splicing factor U2AF 35 kDa subunit OS=Sus scrofa OX=9823 GN=U2AF1 PE=4 SV=1 | 4 | 1 | 1 | 1 | 239 | 27.8 | 8.68 | 2.16 | 1 | 1 |
| TRUE | Master Protein | I3LJ87 | 40S ribosomal protein S2 OS=Sus scrofa OX=9823 GN=RPS2 PE=1 SV=3 | 6 | 1 | 1 | 1 | 266 | 29.1 | 10.18 | 2.15 | 1 | 1 |
| TRUE | Master Protein | I3LIR0 | Polyhomeotic-like protein 2 isoform a OS=Sus scrofa OX=9823 GN=PHC2 PE=1 SV=2 | 1 | 1 | 1 | 1 | 887 | 93.7 | 9.03 | 2.15 | 1 | 1 |
| TRUE | Master Protein | Q0QEM6 | ATP synthase subunit beta (Fragment) OS=Sus scrofa OX=9823 GN=ATP5B PE=2 SV=1 | 4 | 1 | 1 | 1 | 437 | 47.1 | 5.11 | 2.14 | 1 | 1 |
| TRUE | Master Protein | A0A481A1C4 | Keratin, type I cytoskeletal 27 OS=Sus scrofa OX=9823 PE=4 SV=1 | 3 | 1 | 1 | 1 | 264 | 29.8 | 4.74 | 2.14 | 1 | 1 |
| TRUE | Master Protein | A0A4X1TH57 | Very-long-chain (3R)-3-hydroxyacyl-CoA dehydratase OS=Sus scrofa OX=9823 GN=HACD3 PE=3 SV=1 | 2 | 1 | 1 | 1 | 362 | 43.2 | 9.2 | 2.12 | 1 | 1 |
| TRUE | Master Protein | A0A4X1SY17 | Ribonucleoprotein OS=Sus scrofa OX=9823 PE=3 SV=1 | 9 | 1 | 1 | 1 | 128 | 14.1 | 8.73 | 2.11 | 1 | 1 |
| TRUE | Master Protein | A0A4X1VS56 | Arf-GAP domain-containing protein OS=Sus scrofa OX=9823 GN=ARFGAP2 PE=4 SV=1 | 3 | 1 | 1 | 1 | 384 | 42 | 7.34 | 2.09 | 1 | 1 |
| TRUE | Master Protein | G9F6X9 | Dihydropyrimidinase-related protein 2 OS=Sus scrofa OX=9823 PE=2 SV=1 | 1 | 1 | 1 | 1 | 572 | 62.3 | 6.16 | 2.09 | 1 | 1 |
| TRUE | Master Protein | A0A287BGL3 | 60S acidic ribosomal protein P0 OS=Sus scrofa OX=9823 GN=RPLP0 PE=3 SV=1 | 3 | 1 | 1 | 1 | 319 | 35.5 | 9.64 | 2.08 | 1 | 1 |
| TRUE | Master Protein | F1S086 | Calcium-binding mitochondrial carrier protein Aralar1 OS=Sus scrofa OX=9823 GN=SLC25A12 PE=1 SV=3 | 2 | 1 | 1 | 1 | 677 | 74.7 | 8.27 | 2.06 | 1 | 1 |
| TRUE | Master Protein | A0A4X1UBG5 | ATP-dependent RNA helicase DDX1 OS=Sus scrofa OX=9823 GN=DDX1 PE=3 SV=1 | 1 | 1 | 1 | 1 | 740 | 82.5 | 7.23 | 2.06 | 1 | 1 |
| TRUE | Master Protein | A0A287BNP8 | CRAL-TRIO domain-containing protein OS=Sus scrofa OX=9823 GN=RLBP1 PE=1 SV=1 | 2 | 1 | 1 | 1 | 319 | 37.1 | 5.33 | 2.06 | 1 | 1 |
| TRUE | Master Protein | B6V8C8 | 40S ribosomal protein S3a OS=Sus scrofa OX=9823 GN=RPS3A PE=1 SV=1 | 3 | 1 | 1 | 1 | 264 | 29.9 | 9.74 | 2.05 | 1 | 1 |
| TRUE | Master Protein | A0A4X1VU19 | Robl_LC7 domain-containing protein OS=Sus scrofa OX=9823 GN=LAMTOR2 PE=3 SV=1 | 8 | 1 | 1 | 1 | 125 | 13.5 | 5.4 | 2.04 | 1 | 1 |
| TRUE | Master Protein | A0A4X1WCH9 | SWIB domain-containing protein OS=Sus scrofa OX=9823 GN=SMARCD1 PE=3 SV=1 | 3 | 1 | 1 | 1 | 515 | 58.2 | 9.25 | 2.04 | 1 | 1 |

| | | | | | | | | | | | | | |
|------|----------------|------------|--|---|---|---|---|------|-------|-------|------|---|---|
| TRUE | Master Protein | A0A5G2QWT4 | Alpha_adaptinC2 domain-containing protein OS=Sus scrofa OX=9823 GN=AP2A2 PE=1 SV=1 | 1 | 1 | 1 | 1 | 857 | 94.2 | 6.27 | 2.03 | 1 | 1 |
| TRUE | Master Protein | A0A4X1SW39 | Sodium/potassium-transporting ATPase subunit alpha OS=Sus scrofa OX=9823 GN=ATP1A1 PE=3 SV=1 | 1 | 1 | 1 | 1 | 1018 | 112.3 | 5.68 | 2.03 | 1 | 1 |
| TRUE | Master Protein | A0A287A4H2 | Transcriptional activator protein Pur-beta OS=Sus scrofa OX=9823 GN=PURB PE=1 SV=1 | 2 | 1 | 1 | 1 | 308 | 32.9 | 5.43 | 2.03 | 1 | 1 |
| TRUE | Master Protein | A0A287AZ57 | Nsp1_C domain-containing protein OS=Sus scrofa OX=9823 GN=NUP62 PE=1 SV=1 | 2 | 1 | 1 | 1 | 478 | 49.1 | 5.43 | 2.02 | 1 | 1 |
| TRUE | Master Protein | A0A286ZPW3 | WD_REPEATS_REGION domain-containing protein OS=Sus scrofa OX=9823 GN=STRN3 PE=1 SV=1 | 1 | 1 | 1 | 1 | 760 | 83 | 5.17 | 2.02 | 1 | 1 |
| TRUE | Master Protein | A0A4X1SWE0 | Carbonate dehydratase IV OS=Sus scrofa OX=9823 PE=3 SV=1 | 4 | 1 | 1 | 1 | 311 | 35.2 | 7.53 | 2.02 | 1 | 1 |
| TRUE | Master Protein | F1SGD0 | F-box-like/WD repeat-containing protein TBL1XR1 isoform 1 OS=Sus scrofa OX=9823 GN=TBL1XR1 PE=4 SV=3 | 3 | 1 | 1 | 1 | 514 | 55.6 | 5.55 | 2 | 1 | 1 |
| TRUE | Master Protein | A0A287A452 | Ribosomal protein L15 OS=Sus scrofa OX=9823 GN=RPL15 PE=1 SV=1 | 4 | 1 | 1 | 1 | 187 | 21.9 | 10.92 | 2 | 1 | 1 |
| TRUE | Master Protein | A0A287BIZ5 | Protein RUFY3 isoform X4 OS=Sus scrofa OX=9823 GN=RUFY3 PE=1 SV=1 | 2 | 1 | 1 | 1 | 597 | 67.8 | 5.87 | 2 | 1 | 1 |
| TRUE | Master Protein | A0A4X1UKP8 | DNA topoisomerase 2 OS=Sus scrofa OX=9823 GN=TOP2B PE=3 SV=1 | 1 | 1 | 1 | 1 | 1539 | 173.9 | 8.02 | 2 | 1 | 1 |
| TRUE | Master Protein | A0A4X1UCV9 | Importin N-terminal domain-containing protein OS=Sus scrofa OX=9823 GN=TNPO1 PE=4 SV=1 | 1 | 1 | 1 | 1 | 844 | 95.7 | 4.98 | 1.99 | 1 | 1 |
| TRUE | Master Protein | A0A4X1TQ26 | SCD domain-containing protein OS=Sus scrofa OX=9823 GN=STAG1 PE=3 SV=1 | 1 | 1 | 1 | 1 | 1227 | 140.9 | 5.57 | 1.99 | 1 | 1 |
| TRUE | Master Protein | A0A287B109 | UPAR/Ly6 domain-containing protein OS=Sus scrofa OX=9823 GN=LYNX1 PE=4 SV=1 | 9 | 1 | 1 | 1 | 116 | 12.5 | 7.05 | 1.99 | 1 | 1 |
| TRUE | Master Protein | K9J6I7 | Adducin 1 (Alpha) OS=Sus scrofa OX=9823 GN=ADD1 PE=2 SV=1 | 1 | 1 | 1 | 1 | 744 | 81.2 | 5.48 | 1.98 | 1 | 1 |
| TRUE | Master Protein | A0A4X1STI8 | Non-specific serine/threonine protein kinase OS=Sus scrofa OX=9823 GN=RPS6KA5 PE=3 SV=1 | 1 | 1 | 1 | 1 | 957 | 105.6 | 7.96 | 1.98 | 1 | 1 |
| TRUE | Master Protein | A0A480JG04 | Splicing factor 3B subunit 3 OS=Sus scrofa OX=9823 PE=4 SV=1 | 1 | 1 | 1 | 1 | 1118 | 124.2 | 5.31 | 1.98 | 1 | 1 |
| TRUE | Master Protein | A0A4X1UJJ1 | Kinesin-like protein OS=Sus scrofa OX=9823 PE=3 SV=1 | 2 | 1 | 1 | 1 | 679 | 76.9 | 6.4 | 1.98 | 1 | 1 |
| TRUE | Master Protein | A0A2C9F391 | Major prion protein OS=Sus scrofa OX=9823 GN=PRNP PE=1 SV=1 | 3 | 1 | 1 | 1 | 256 | 27.6 | 9.32 | 1.97 | 1 | 1 |
| TRUE | Master Protein | A0A4X1TXT9 | E3 ubiquitin-protein ligase TRIP12 OS=Sus scrofa OX=9823 GN=TRIP12 PE=3 SV=1 | 1 | 1 | 1 | 1 | 1983 | 219.1 | 8.29 | 1.97 | 1 | 1 |
| TRUE | Master Protein | F1RPW9 | Elongation factor 1-gamma OS=Sus scrofa OX=9823 GN=EEF1G PE=4 SV=3 | 3 | 1 | 1 | 1 | 436 | 49.9 | 6.57 | 1.97 | 1 | 1 |
| TRUE | Master Protein | A0PFK6 | F-actin-capping protein subunit alpha OS=Sus scrofa OX=9823 GN=CP alpha2 PE=2 SV=1 | 5 | 1 | 1 | 1 | 286 | 33 | 5.85 | 1.97 | 1 | 1 |
| TRUE | Master Protein | A0A480QJH2 | BCL2-associated athanogene 6 OS=Sus scrofa OX=9823 PE=4 SV=1 | 2 | 1 | 1 | 1 | 522 | 55.1 | 5.69 | 1.97 | 1 | 1 |

| | | | | | | | | | | | | | |
|------|----------------|-------------|--|---|---|---|---|------|----------|-------------|----------|--------|-----|
| TRUE | Master Protein | A0A2I2KH U2 | Genome polyprotein (Fragment) OS=Atypical porcine pestivirus OX=1914447 GN=NS2-3 PE=4 SV=1 | 2 | 1 | 1 | 1 | 962 | 107.6 | 7.12 | 1.96 | 1 | 1 |
| TRUE | Master Protein | A0A480JR B0 | Clathrin light chain OS=Sus scrofa OX=9823 PE=3 SV=1 | 3 | 1 | 1 | 1 | 229 | 25.2 | 4.6 | 1.95 | 1 | 1 |
| TRUE | Master Protein | A0A5G2Q WH1 | V-type proton ATPase subunit H OS=Sus scrofa OX=9823 GN=ATP6V1H PE=3 SV=1 | 4 | 1 | 1 | 1 | 464 | 53.7 | 6.61 | 1.95 | 1 | 1 |
| TRUE | Master Protein | F1S8K5 | FACT complex subunit OS=Sus scrofa OX=9823 GN=SUPT16H PE=1 SV=2 | 1 | 1 | 1 | 1 | 1083 | 123.6 | 5.78 | 1.95 | 1 | 1 |
| TRUE | Master Protein | P62831 | 60S ribosomal protein L23 OS=Sus scrofa OX=9823 GN=RPL23 PE=1 SV=1 | 6 | 1 | 1 | 1 | 140 | 14.9 | 10.51 | 1.94 | 1 | 1 |
| TRUE | Master Protein | D2XZ48 | Non-structural protein 6 OS=Porcine reproductive and respiratory syndrome virus OX=28344 PE=2 SV=1 | 0 | 1 | 1 | 1 | 2502 | 271.2 | 7.5 | 1.93 | 1 | 1 |
| TRUE | Master Protein | A0A287A 1N9 | Zinc finger protein 385A isoform a OS=Sus scrofa OX=9823 GN=ZNF385A PE=1 SV=2 | 3 | 1 | 1 | 1 | 387 | 40.6 | 9.86 | 1.93 | 1 | 1 |
| TRUE | Master Protein | A0A481D 3P3 | Transmembrane protein 43 OS=Sus scrofa OX=9823 PE=3 SV=1 | 2 | 1 | 1 | 1 | 400 | 44.9 | 7.71 | 1.92 | 1 | 1 |
| TRUE | Master Protein | A0A480M RU2 | DNA repair protein RAD50 OS=Sus scrofa OX=9823 PE=4 SV=1 | 2 | 1 | 1 | 1 | 511 | 59.5 | 8.73 | 1.92 | 1 | 1 |
| TRUE | Master Protein | A0A287A 3R3 | PDZ domain-containing protein OS=Sus scrofa OX=9823 GN=GIPC3 PE=3 SV=2 | 3 | 1 | 1 | 1 | 314 | 34.3 | 5.6 | 1.92 | 1 | 1 |
| TRUE | Master Protein | F1RNL4 | Serine/threonine-protein phosphatase OS=Sus scrofa OX=9823 GN=PPP1CC PE=1 SV=4 | 3 | 1 | 1 | 1 | 304 | 34.9 | 5.58 | 1.9 | 1 | 1 |
| TRUE | Master Protein | K7GNY4 | 60S ribosomal protein L8 OS=Sus scrofa OX=9823 GN=RPL8 PE=1 SV=3 | 5 | 1 | 1 | 1 | 225 | 24.6 | 11.02 | 1.9 | 1 | 1 |
| TRUE | Master Protein | A0A480J6 I6 | Lysine-specific demethylase 4A isoform X1 OS=Sus scrofa OX=9823 PE=4 SV=1 | 1 | 1 | 1 | 1 | 821 | 91.8 | 5.33 | 1.9 | 1 | 1 |
| TRUE | Master Protein | A0A286ZJ L5 | V-type proton ATPase subunit D OS=Sus scrofa OX=9823 GN=ATP6V1D PE=1 SV=1 | 3 | 1 | 1 | 1 | 247 | 28.2 | 9.36 | 1.9 | 1 | 1 |
| TRUE | Master Protein | K9IWE3 | Histone-lysine N-methyltransferase ASH1L OS=Sus scrofa OX=9823 GN=ASH1L PE=2 SV=2 | 0 | 1 | 1 | 1 | 2958 | 331.4 | 9.38 | 1.9 | 1 | 1 |
| | | | | | | | | 2208 | 25034.19 | 3396285.408 | 10606.09 | 8317.3 | 386 |

Table S3. Matrisome components of retinal decellularized extracellular matrix (RdECM).

| Division | Category | Name |
|----------------------|------------------------|---|
| Core Matrisome | Collagen | Collagen, type XVIII, alpha 1 |
| | Proteoglycan | Heparan sulfate proteoglycan 2 |
| | ECM Glycoprotein | Agrin |
| | | Laminin, beta 2 (laminin S) |
| | | Laminin, gamma 1 (formerly LAMB2) |
| | | Nidogen 2 (osteonidogen) |
| | | Tubulointerstitial nephritis antigen-like 1 |
| | | Tenascin R (restrictin, janusin) |
| | | Von Willebrand factor A domain containing 1 |
| Matrisome-associated | Secreted factor | Fibroblast growth factor 2 (basic) |
| | ECM-affiliated protein | S100 calcium binding protein A14 |
| | | Lectin, galactoside-binding, soluble, 1 |