

Supplementary Materials: Rapamycin-Loaded Polymeric Nanoparticles as an Advanced Formulation for Macrophage Targeting in Atherosclerosis

Emanuela Fabiola Craparo, Marta Cabibbo, Alice Conigliaro, Maria Magdalena Barreca, Teresa Musumeci, Gaetano Giammona, Gennara Cavallaro

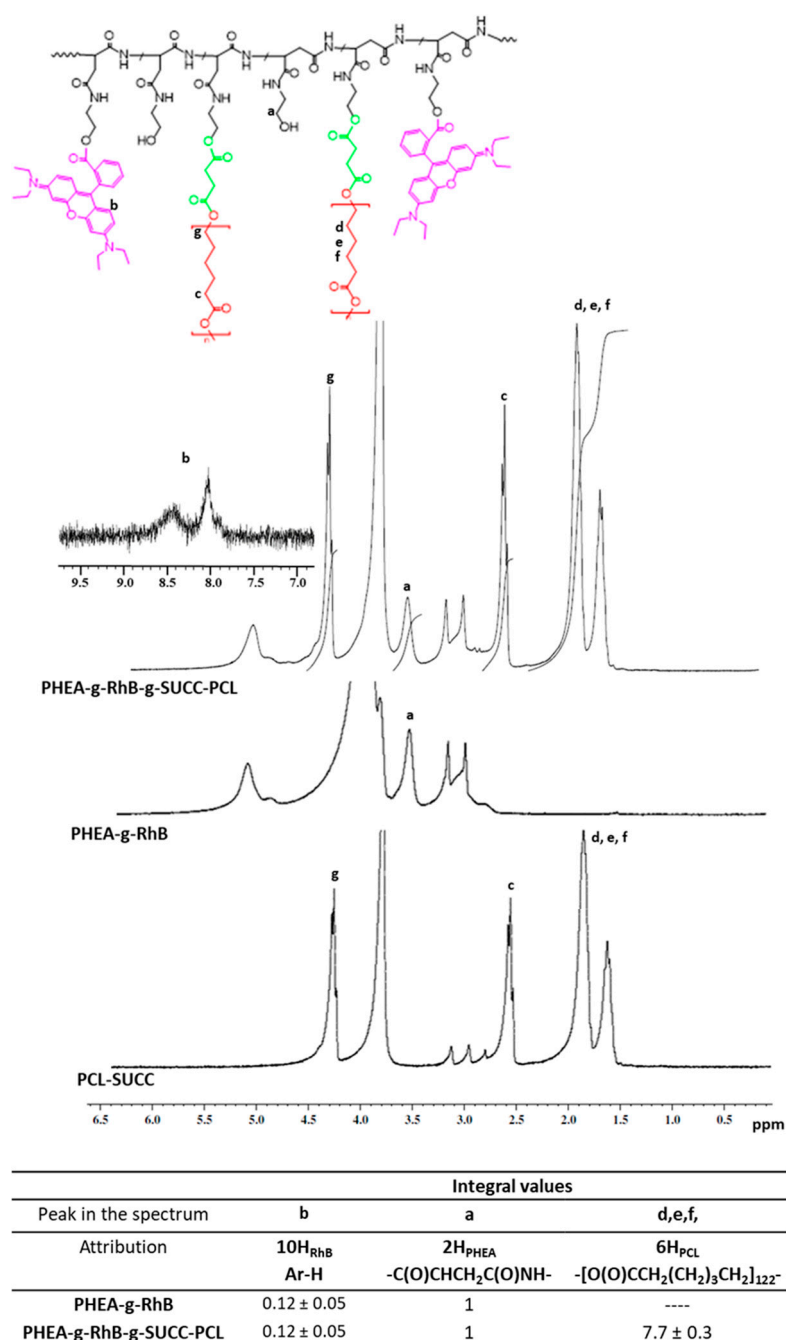


Figure S1. ¹H NMR spectra of PHEA-g-RhB, PCL-SUCC, and PHEA-g-RhB-g-SUCC-PCL copolymers in DMF-d₇.

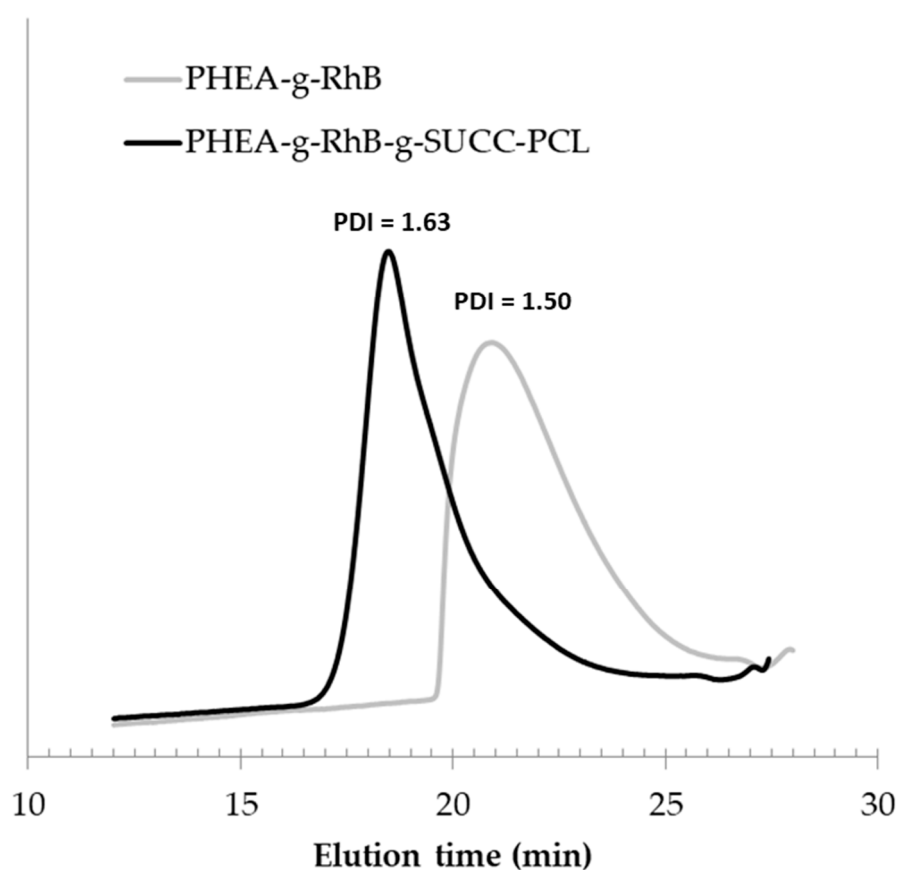


Figure S2. Size Exclusion Chromatography (SEC) chromatograms for PHEA-RhB (grey line) and PHEA-g-RhB-g-SUCC-PCL graft copolymers in DMF + LiBr 0.01 M.

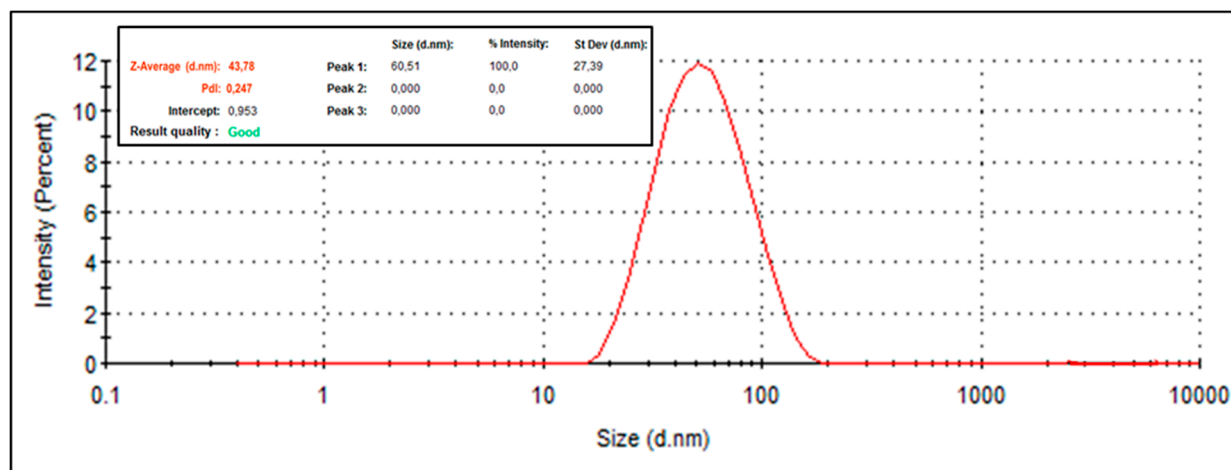


Figure S3. Distribution size (intensity%) of sample Rapa-loaded KP-Nano, determined by DLS.

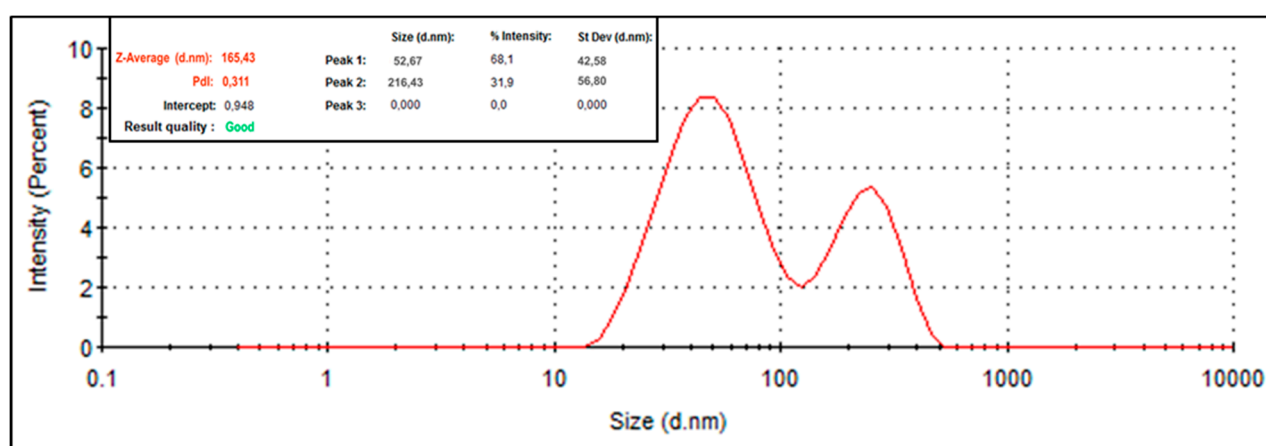


Figure S4. Distribution size (intensity%) of sample Rapa-loaded KP-Nano after freeze drying, determined by DLS.