

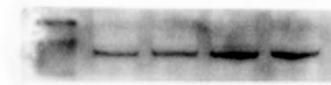
Figure S1. Fig.5A (Results: Regulation of ISL on ER β /PI3K/Akt signal)

HCT116(Original images in Fig 5)

All experimental samples and controls were derived from the same experiment and were treated under the same western blotting conditions.

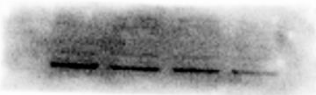
ESR2

69KD

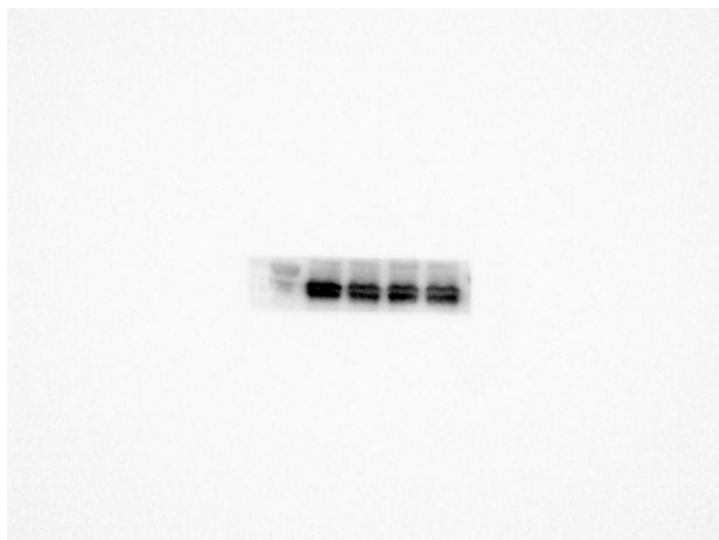


PIK3CG

121KD



AKT



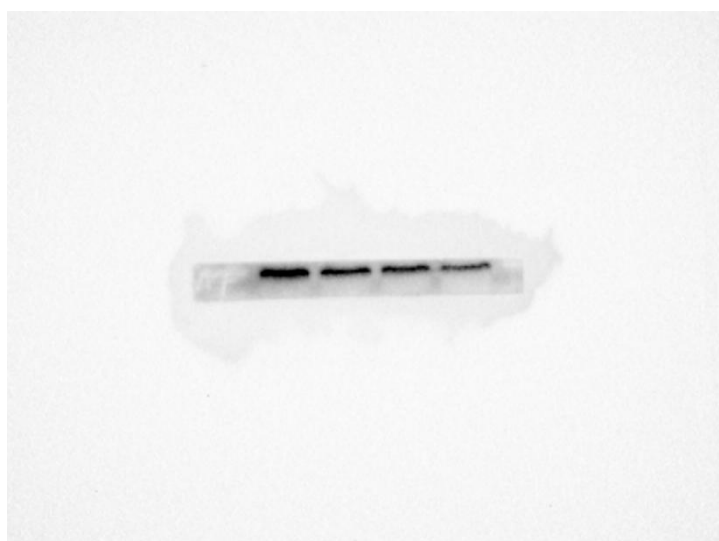
56KD

P-AKT



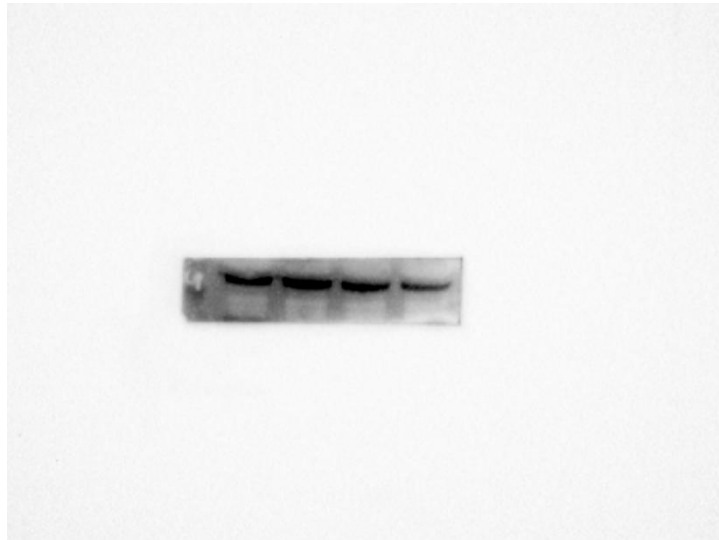
60KD

NF- κ B



65KD

P-GSK3 β



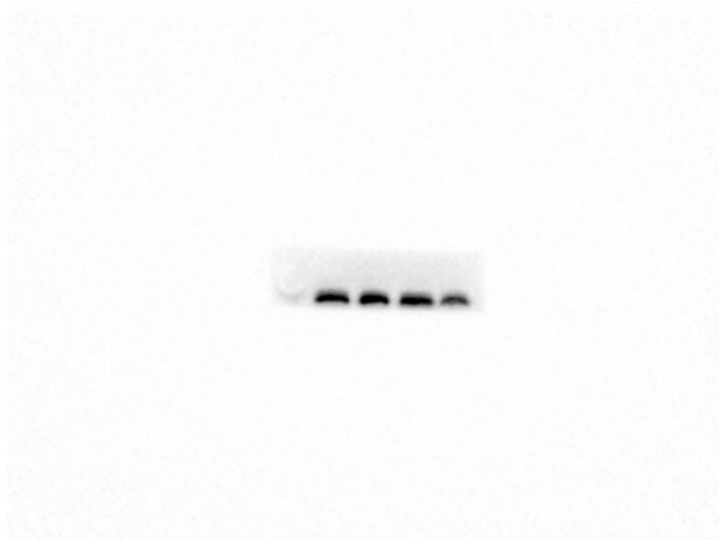
48KD

GSK3 β



46KD

CDK1



34KD

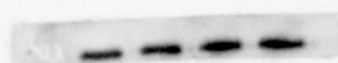
Bcl2

26KD



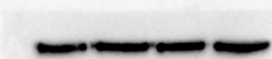
Bax

23KD



β -actin

42KD



Full-length blots of ESR2, PI3KCG, AKT, P-AKT, NK- κ B, GSK3 β , P-GSK3 β , CDK1, Bcl-2, Bax and β -actin. From right to left: 0 μ M, 20 μ M, 40 μ M, 80 μ M. The samples derive from the same experiment.

HCT116(Repeated experiments)

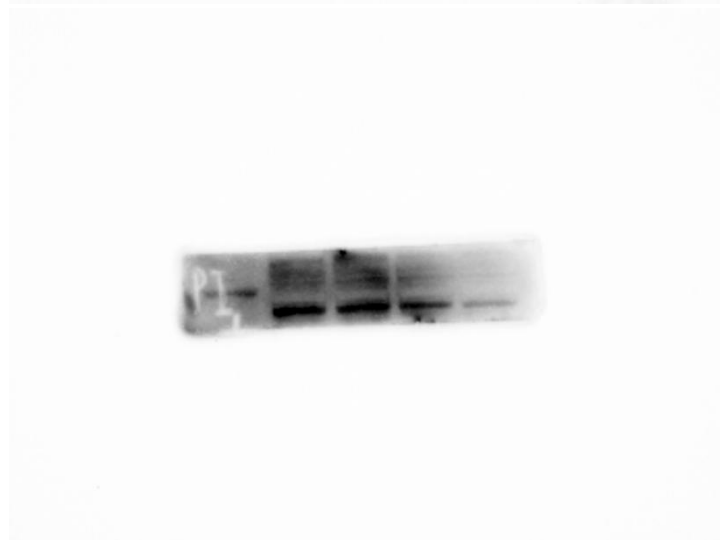
All experimental samples and controls were derived from the same experiment and were treated under the same western blotting conditions.

ESR2



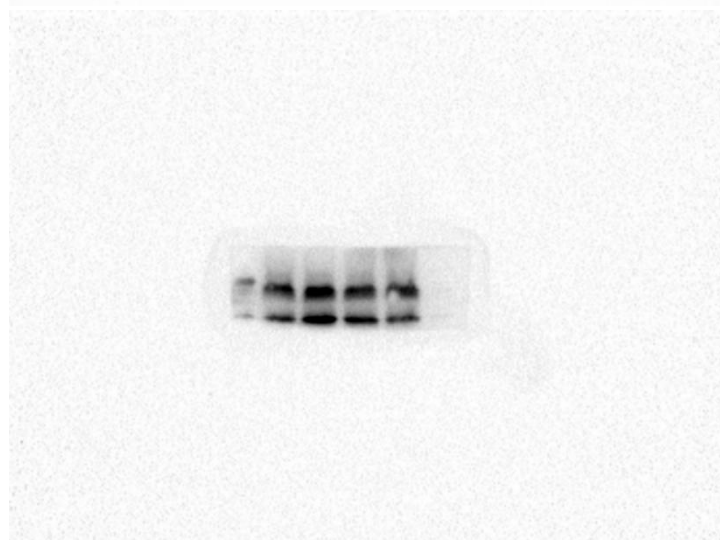
69KD

PIK3CG



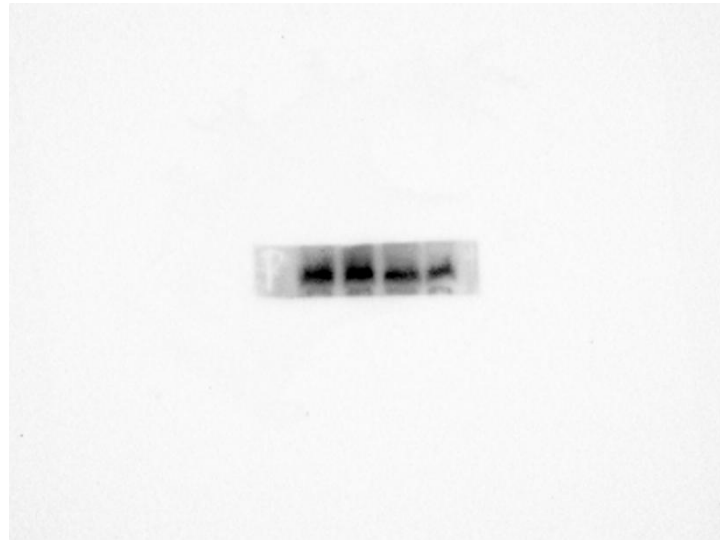
121KD

AKT



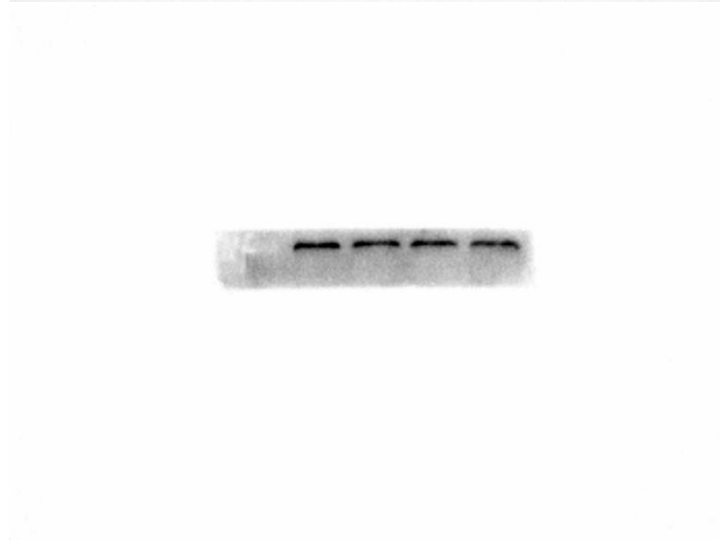
56KD

P-AKT



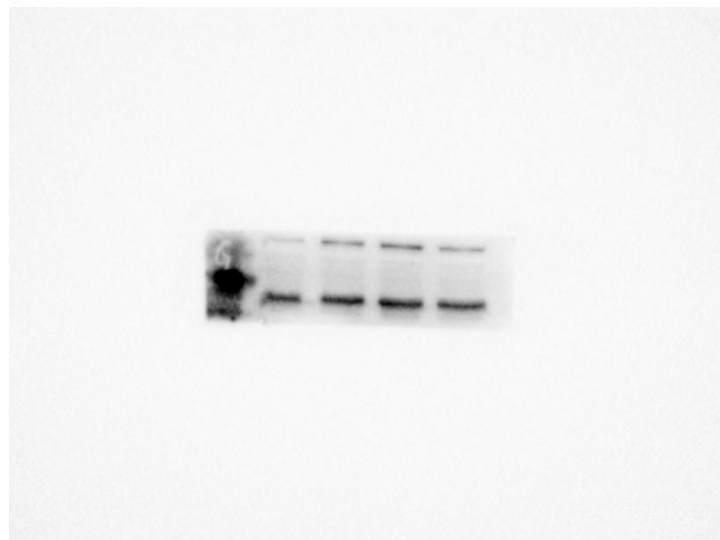
60KD

NF- κ B



65KD

GSK3 β



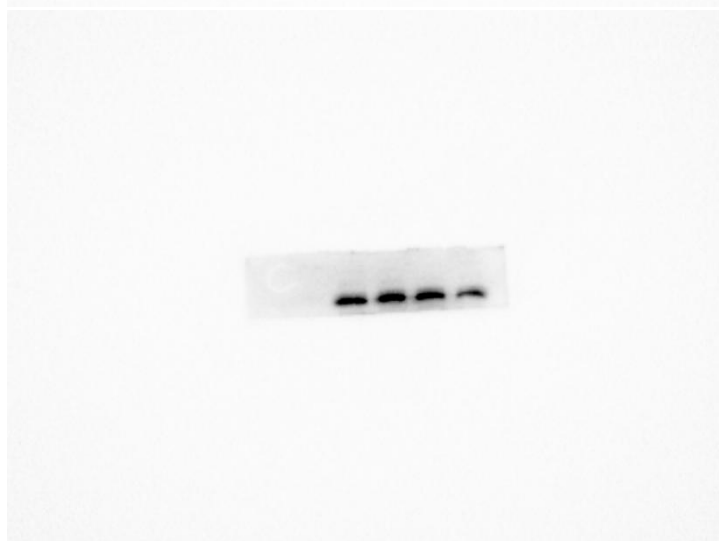
46KD

P-GSK3 β



48KD

CDK1

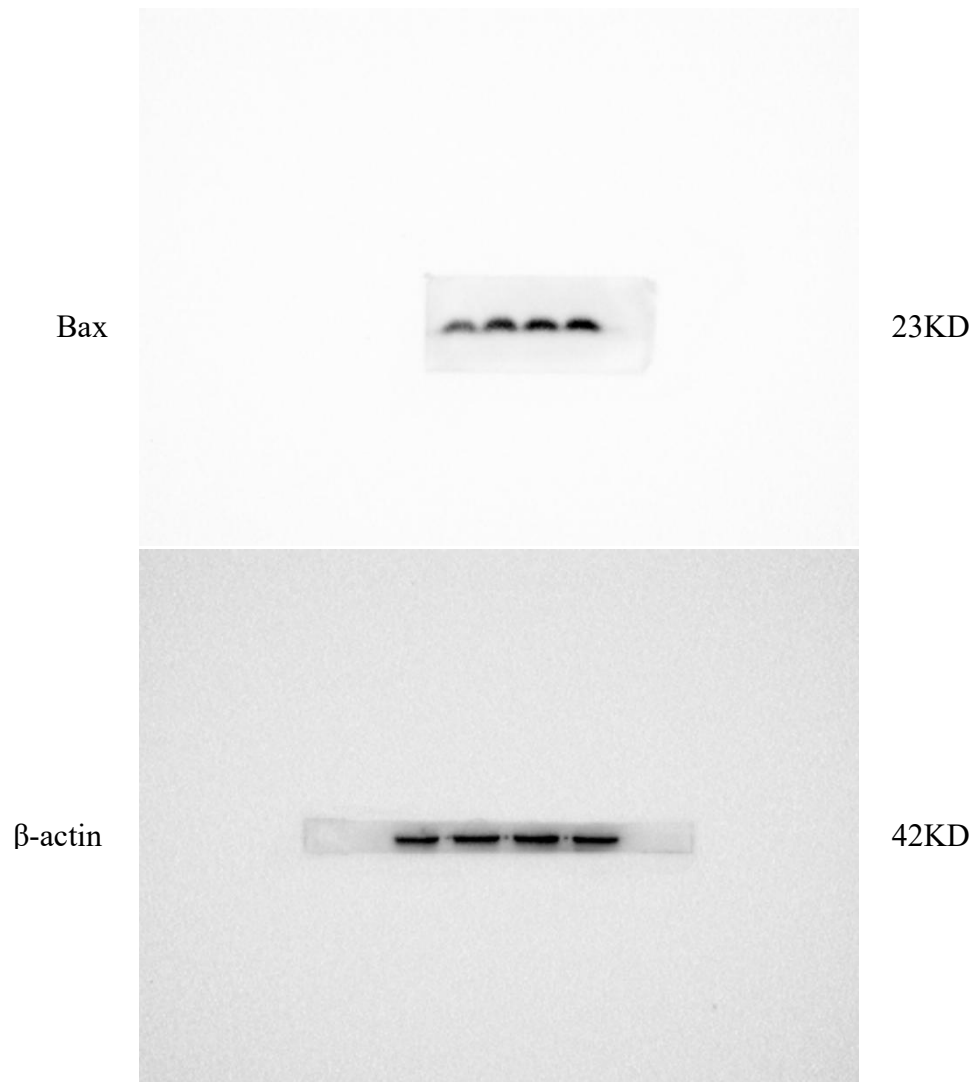


34KD

Bcl2



26KD

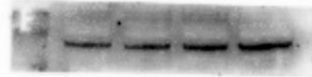


Full-length blots of ESR2, PI3KCG, AKT, P-AKT, NK- κ B, GSK3 β , P-GSK3 β , CDK1, Bcl-2, Bax and β -actin. From right to left: 0 μ M, 20 μ M, 40 μ M, 80 μ M. The samples derive from the same experiment.

HCT116(Repeated experiments)

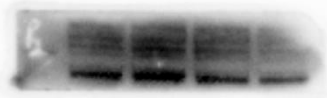
All experimental samples and controls were derived from the same experiment and were treated under the same western blotting conditions.

ESR2



69KD

PIK3CG



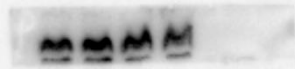
121KD

AKT



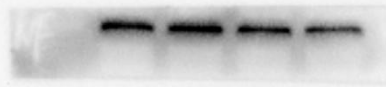
56KD

P-AKT



60KD

NF- κ B



65KD

GSK3 β



46KD

P-GSK3 β

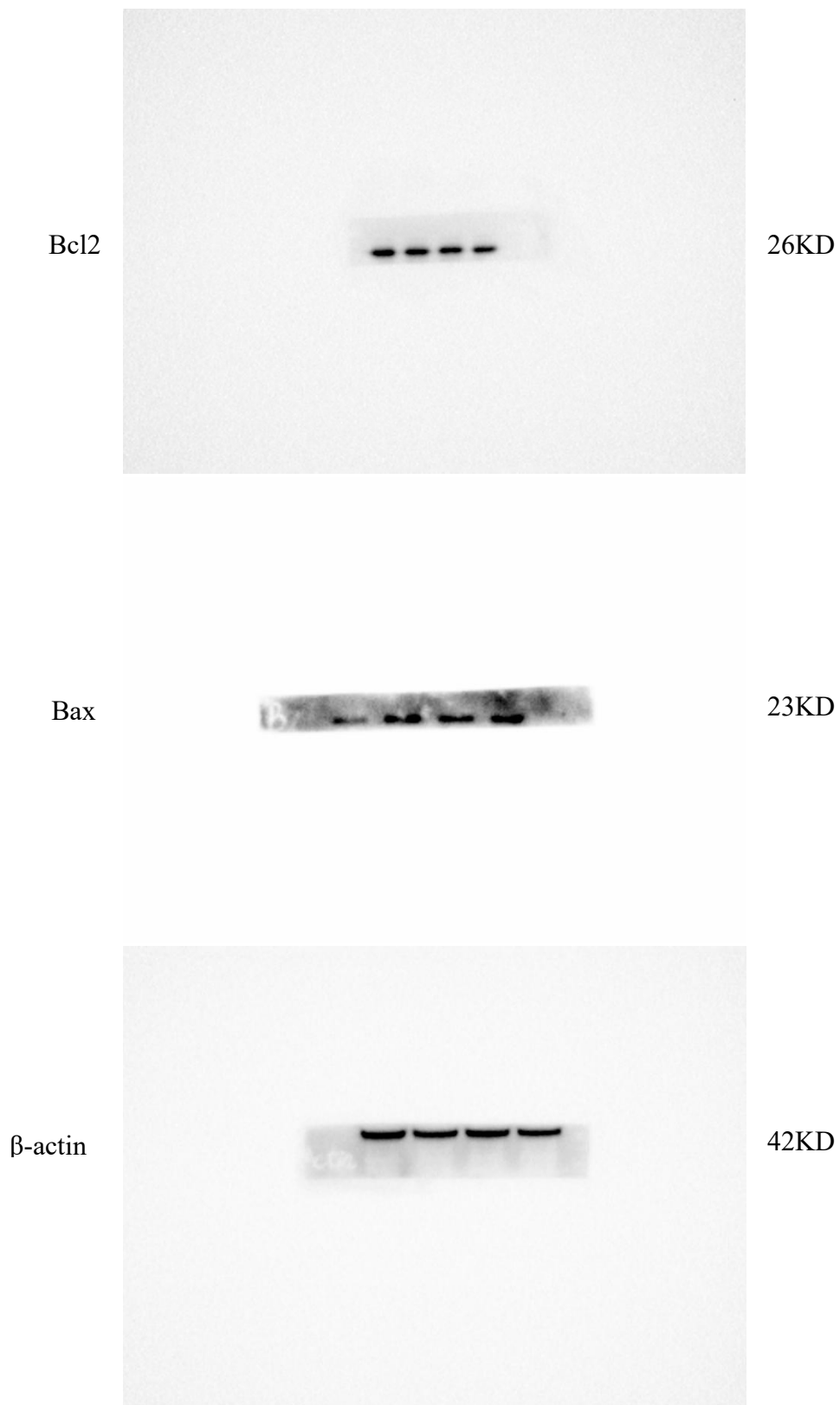


48KD

CDK1



34KD

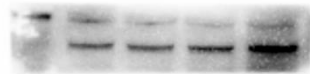


Full-length blots of ESR2, PI3KCG, AKT, P-AKT, NK- κ B, GSK3 β , P-GSK3 β , CDK1, Bcl-2, Bax and β -actin. From right to left: 0 μ M, 20 μ M, 40 μ M, 80 μ M. The samples derive from the same experiment.

SW480(Original images in Fig 5)

All experimental samples and controls were derived from the same experiment and were treated under the same western blotting conditions.

ESR2



69KD

PIK3CG



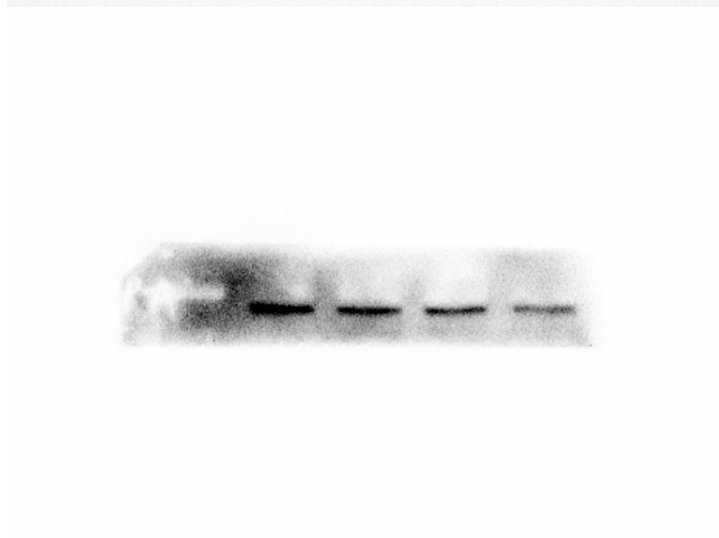
121KD

AKT



56KD

P-AKT



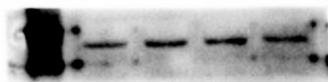
60KD

NF- κ B



65KD

GSK3 β



46KD

P-GSK3 β

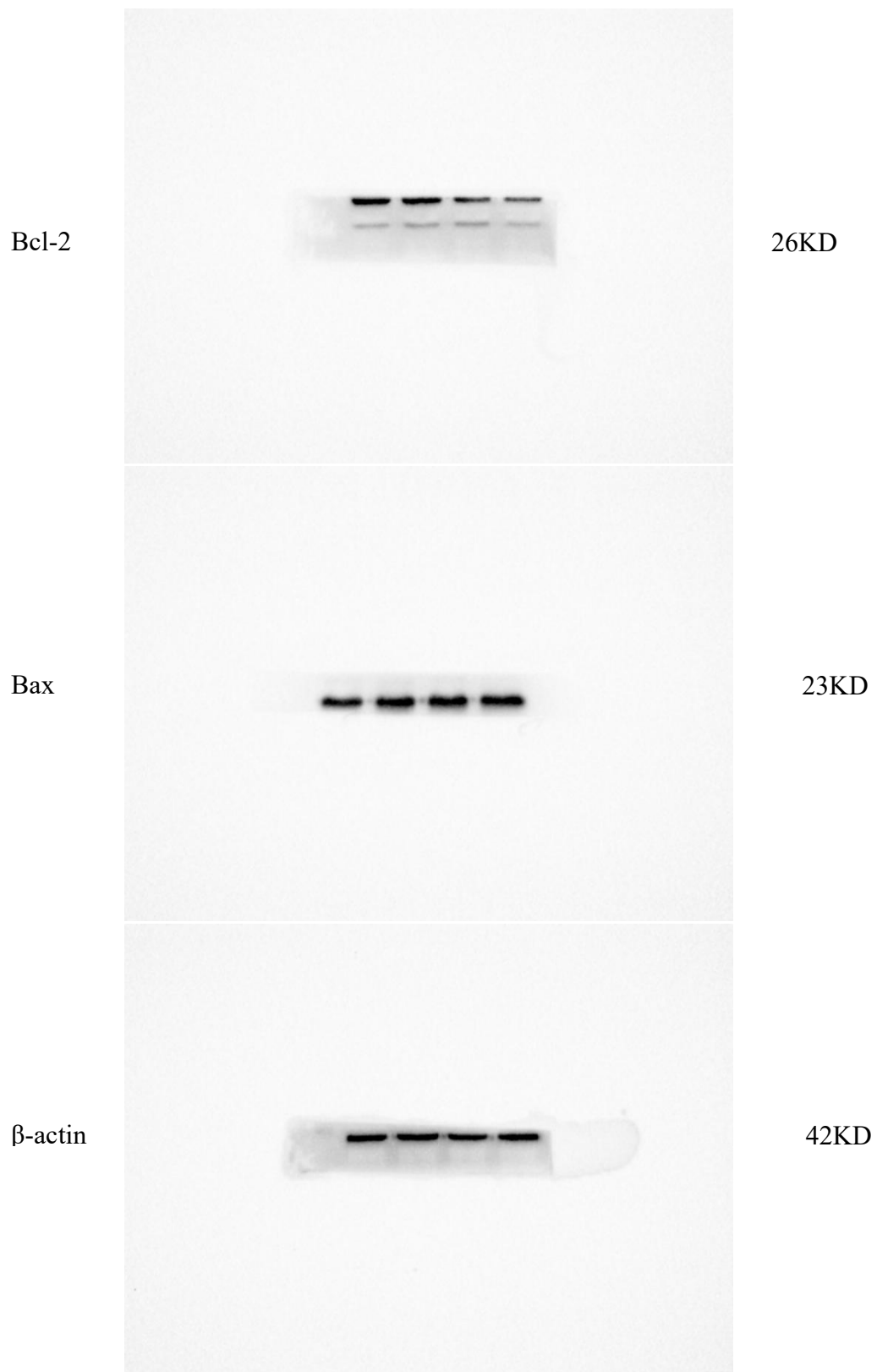


48KD

CDK1



34KD

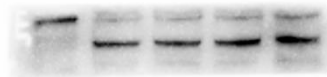


Full-length blots of ESR2, PI3KCG, AKT, P-AKT, NK- κ B, GSK3 β , P-GSK3 β , CDK1, Bcl-2, Bax and β -actin. From right to left: 0 μ M, 20 μ M, 40 μ M, 80 μ M. The samples derive from the same experiment.

SW480(Repeated experiments)

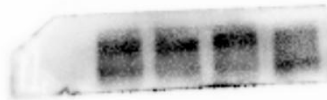
All experimental samples and controls were derived from the same experiment and were treated under the same western blotting conditions.

ESR2



69KD

PIK3CG



121KD

AKT



56KD

P-AKT



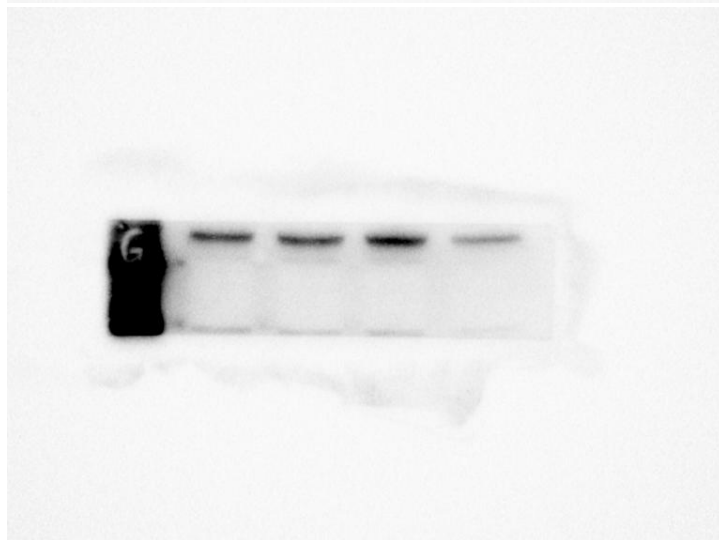
60KD

NF- κ B



65KD

GSK3 β



46KD

P-GSK3 β



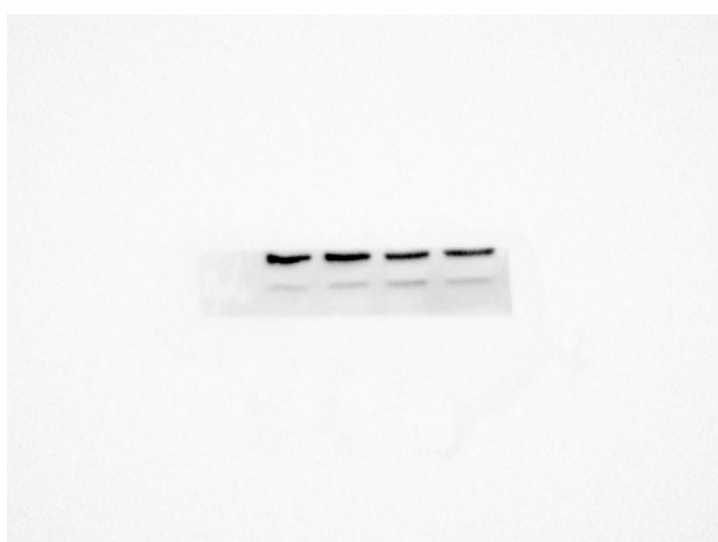
48KD

CDK1

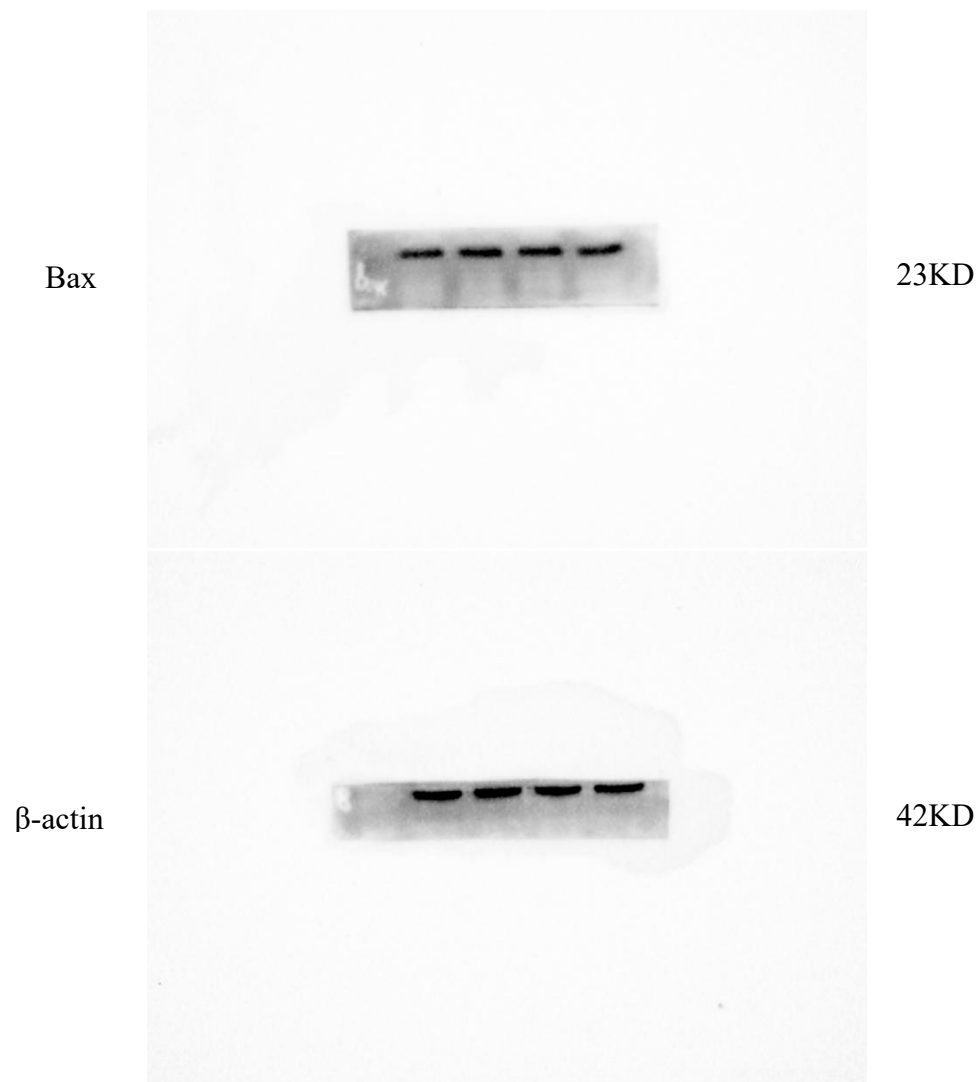


34KD

Bcl2



26KD



Full-length blots of ESR2, PI3KCG, AKT, P-AKT, NK- κ B, GSK3 β , P-GSK3 β , CDK1, Bcl-2, Bax and β -actin. From right to left: 0 μ M, 20 μ M, 40 μ M, 80 μ M. The samples derive from the same experiment.

SW480(Repeated experiments)

All experimental samples and controls were derived from the same experiment and were treated under the same western blotting conditions.

ESR2



69KD

PIK3CG



121KD

AKT



56KD

P-AKT



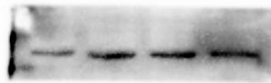
60KD

NF- κ B



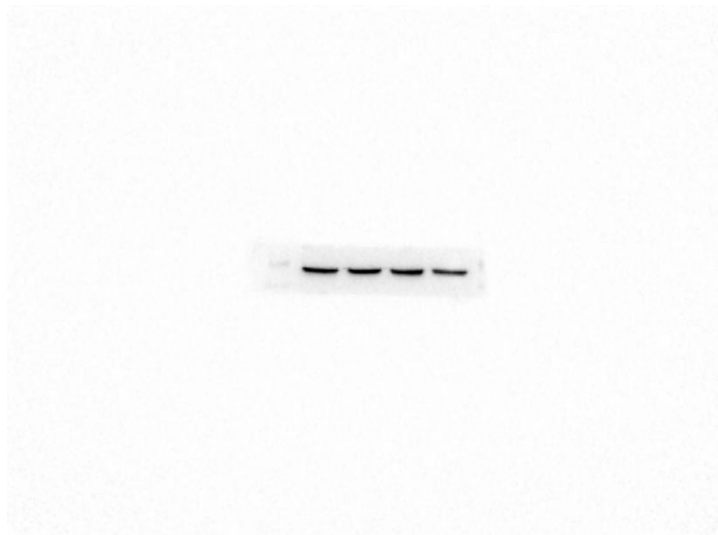
65KD

GSK3 β



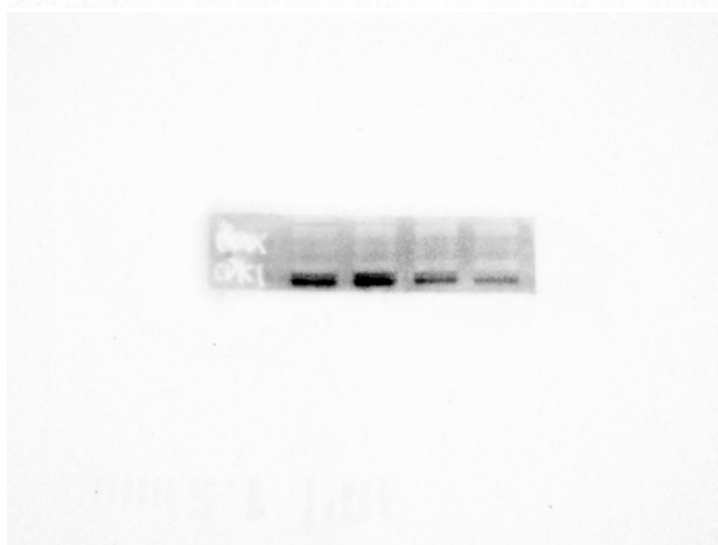
46KD

P-GSK3 β



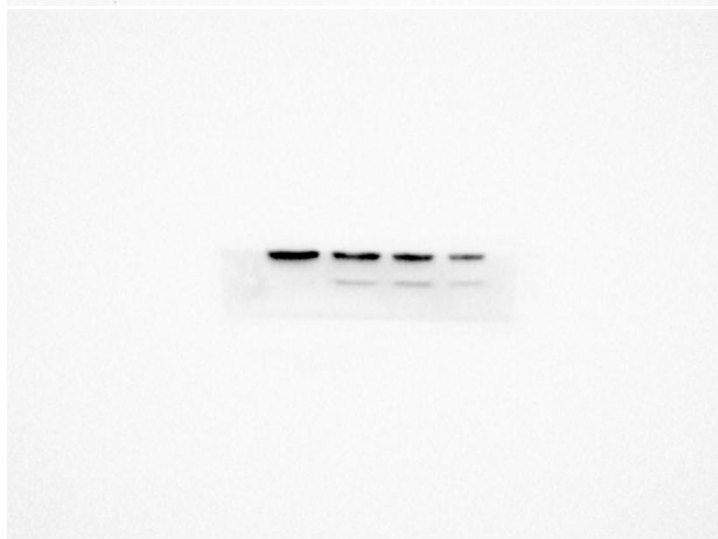
48KD

CDK1

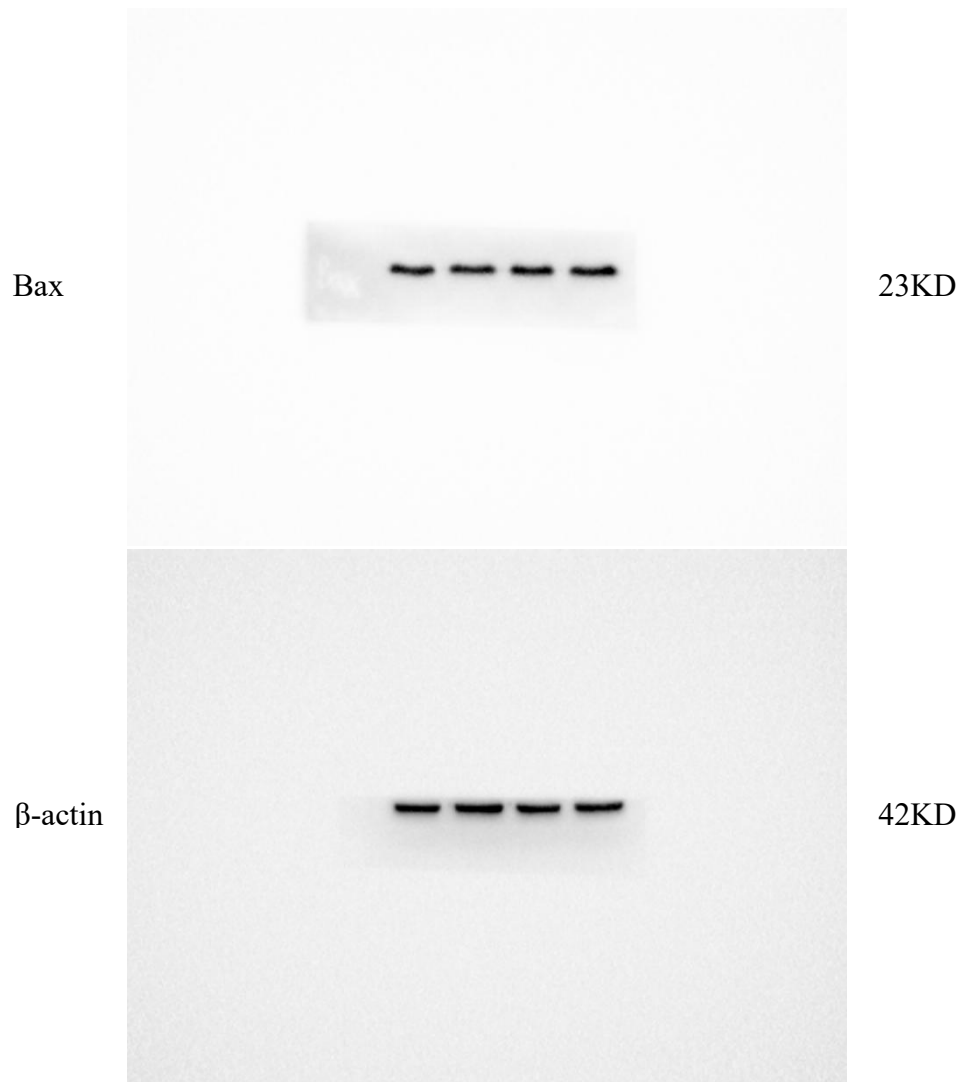


34KD

Bcl2



26KD



Full-length blots of ESR2, PI3KCG, AKT, P-AKT, NK- κ B, GSK3 β , P-GSK3 β , CDK1, Bcl-2, Bax and β -actin. From right to left: 0 μ M, 20 μ M, 40 μ M, 80 μ M. The samples derive from the same experiment.