

***In Vitro* Antiviral Effect and Potential Neuroprotection of *Salvadora persica* L. Stem Bark Extract against Lipopolysaccharides-Induced Neuroinflammation in Mice: LC-ESI-MS/MS Analysis of the Methanol Extract**

Reem Binsuwaidan ^{1,†}, Walaa A. Negm ^{2,*;†}, Engy Elekhawy ^{3,*}, Nashwah G. M. Attallah ⁴,
Eman Ahmed ^{5,6}, Sameh Magdeldin ^{6,7}, Ehssan Moglad ⁸, Sally Abdallah Mostafa ⁹
and Suzy A. El-Sherbeni ²

¹ Department of Pharmaceutical Science, College of Pharmacy, Princess Nourah Bint Abdulrahman University, P.O. Box 84428, Riyadh 11671, Saudi Arabia

² Department of Pharmacognosy, Faculty of Pharmacy, Tanta University, Tanta 31527, Egypt

³ Department of Pharmaceutical Microbiology, Faculty of Pharmacy, Tanta University, Tanta 31527, Egypt

⁴ The Egyptian Drug Authority (EDA), Previously NODCAR, Giza 8655, Egypt

⁵ Department of Pharmacology, Faculty of Veterinary Medicine, Suez Canal University, Ismailia 41522, Egypt

⁶ Proteomics and Metabolomics Research Program, Department of Basic Research, Children's Cancer Hospital 57357, Cairo 11441, Egypt

⁷ Department of Physiology, Faculty of Veterinary Medicine, Suez Canal University, Ismailia 41522, Egypt

⁸ Department of Pharmaceutics, College of Pharmacy, Prince Sattam Bin Abdulaziz University, P.O. Box 173, Al-Kharj 11942, Saudi Arabia

⁹ Department of Medical Biochemistry and Molecular Biology, Faculty of Medicine, Mansoura University, Mansoura 35516, Egypt

* Correspondence: walaa.negm@pharm.tanta.edu.eg (W.A.N.); engy.ali@pharm.tanta.edu.eg (E.E.)

† These authors contributed equally to this work.

Table S1. Primer sequences of the tested genes.

Gene	Primer Sequences	Reference Sequences	PCR product size (bp)
β-actin	F: CTGGCTCCTAGCACCATGAA R: AGCTCAGTAACAGTCCGCCTA	NM_007393.5	189bp
Caspase 3	F: AGCTTGGAACGGTACGCTAAG R: AGTCCACTGACTTGCTCCCA	NM_001284409.1	116bp
IL- 6	F: ACCCCAATTTCCAATGCTCTCC R: ATAACGCACTAGGTTTGCCGA	NM_031168.2	146bp
TNF-α	F: CCACCACGCTCTTCTGTCTA R: CCACTTGGTGGTTTGTGAGTG	NM_001278601.1	126bp
iNOS	F: GGTGAAGGGACTGAGCTGTTA R: TGAAGAGAACTTCCAGGGGC	NM_010927.4	163 bp
c-Jun	F: CCGAGAATTCCGTGACGACT R: TAGCACTCACGTTGGTAGGC	NM_010591.2	160BP

Figure S1: Total ion chromatogram (negative mode) of LC-ESI-MS/MS of methanol extract of *Salvadora persica* stem bark

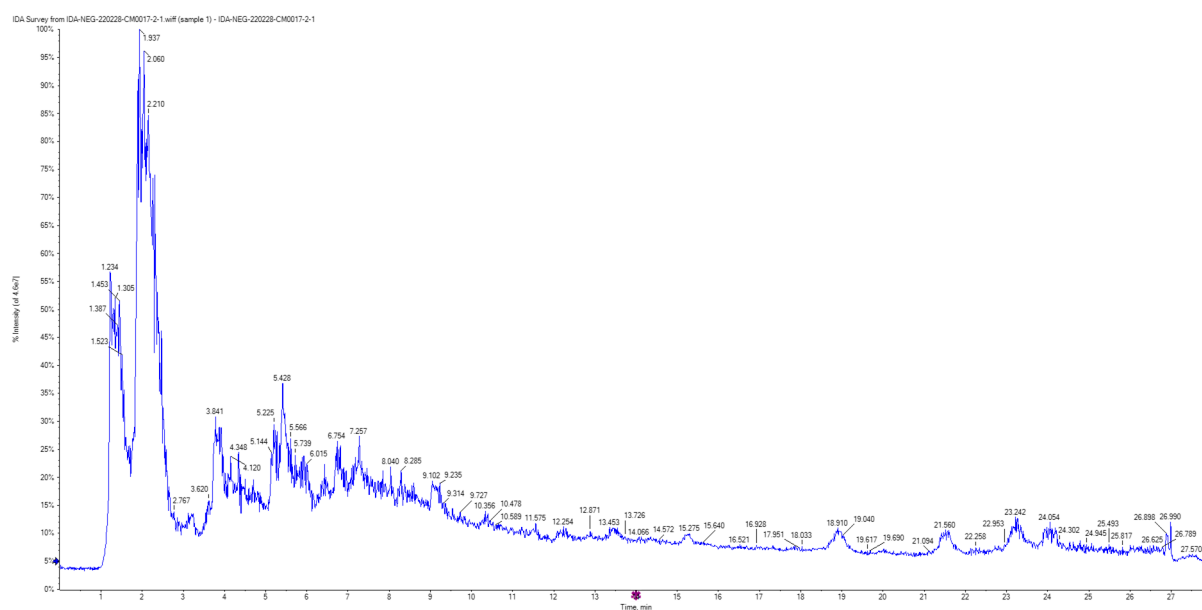


Figure S2: Total ion chromatogram (positive mode) of LC-ESI-MS/MS of methanol extract of *Salvadora persica* stem bark

