

# Metformin Induces Apoptosis in Human Pancreatic Cancer (PC) Cells Accompanied by Changes in the Levels of Histone Acetyltransferases (Particularly, p300/CBP-Associated Factor (PCAF) Protein Levels)

Izabela Szymczak-Pajor <sup>1,\*</sup>, Józef Drzewoski <sup>2</sup>, Ewa Świdarska <sup>3</sup>, Justyna Strycharz <sup>3</sup>, Anna Gabryanczyk <sup>1</sup>, Jacek Kasznicki <sup>4</sup>, Marta Bogdańska <sup>5</sup> and Agnieszka Śliwińska <sup>1</sup>

- <sup>1</sup> Department of Nucleic Acid Biochemistry, Medical University of Lodz, 251 Pomorska Str., 92-213 Lodz, Poland
  - <sup>2</sup> Central Teaching Hospital of the Medical University of Lodz, 251 Pomorska Str., 92-213 Lodz, Poland
  - <sup>3</sup> Department of Medical Biochemistry, Medical University of Lodz, 6/8 Mazowiecka Str., 92-215 Lodz, Poland
  - <sup>4</sup> Department of Internal Diseases, Diabetology and Clinical Pharmacology, Medical University of Lodz, 251 Pomorska Str., 92-213 Lodz, Poland
  - <sup>5</sup> Student Scientific Society of Civilization Diseases, Medical University of Lodz, 251 Pomorska Str., 92-213 Lodz, Poland
- \* Correspondence: izabela.szymczak@umed.lodz.pl

## Supplementary materials

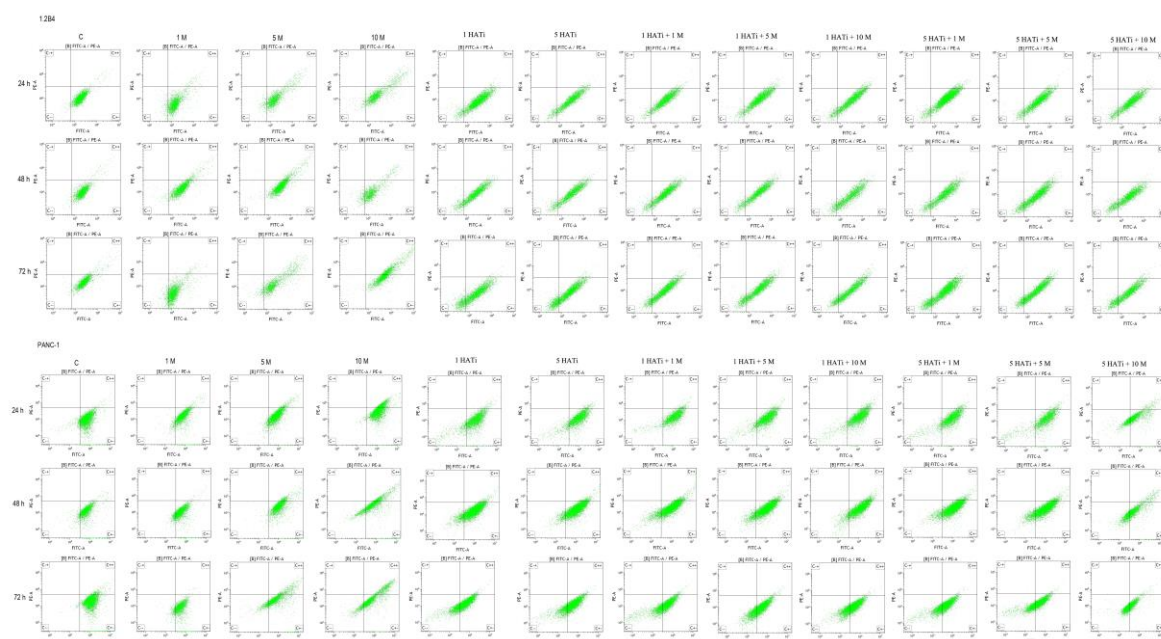


Figure S1. Original flow cytometry data.