

SUPPLEMENTARY FIGURES

Figure S1

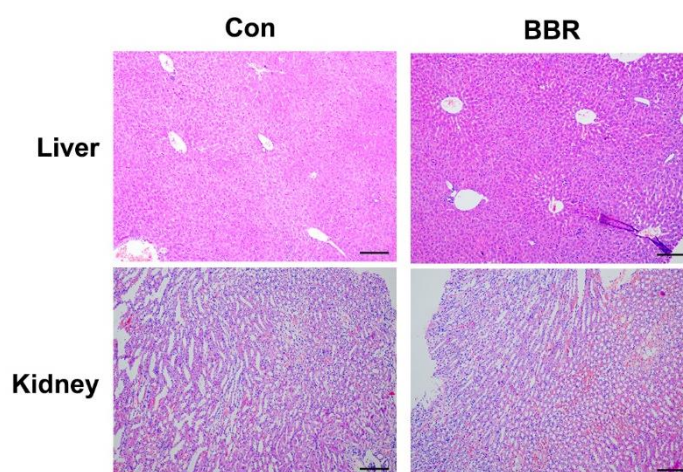


Figure S1. Representative HE images of liver and kidney in two groups.

Representative HE images of liver and kidney between control and berberine treating groups. Scale bars: 10 μm .

Figure S2

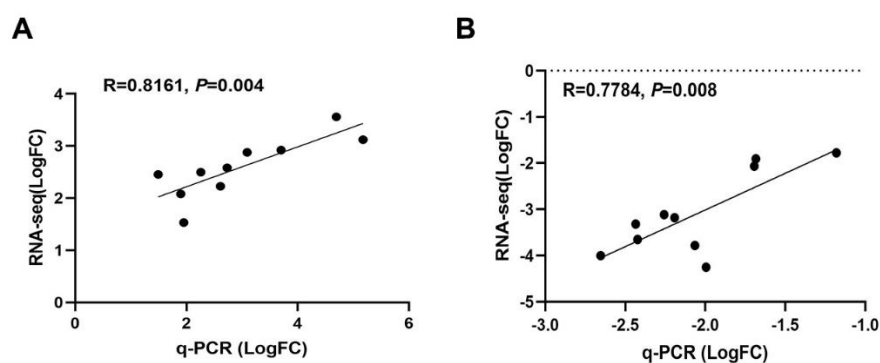


Figure S2. Validation of RNA-seq data.

RNA-seq data is validation by independent set of samples using q-PCR, Pearson correlation (R). Upgruated genes group(S2A) and downgraduated genes group(S2B).

Figure S3

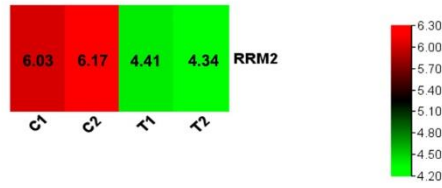


Figure S3. Relative expression of RRM2 in RNA-seq.

Relative expression of RRM2 in transcriptome sequencing between control group and BBR treatment group was shown in heat map. (C1, and C2: control group; T1 and T2: BBR treatment group; relative expression: Log (FPKM+1))

Figure S4

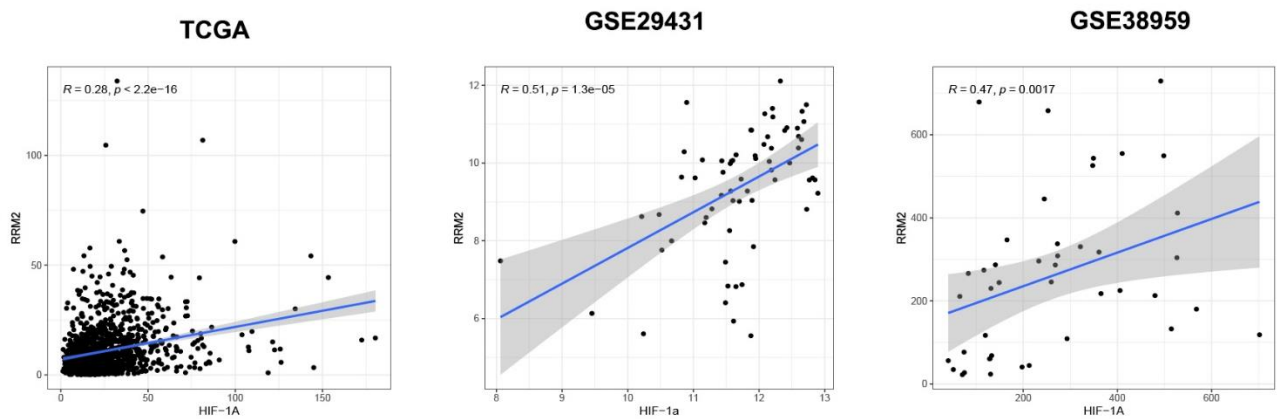


Figure S4. Spearman correlation of RRM2 with HIF-1α in multiple RNA-seq.

Spearman correlation of RRM2 with HIF-1α in the multiple RNA-seq for BRCA and normal samples. *P* value and Spearman's correlations are indicated.