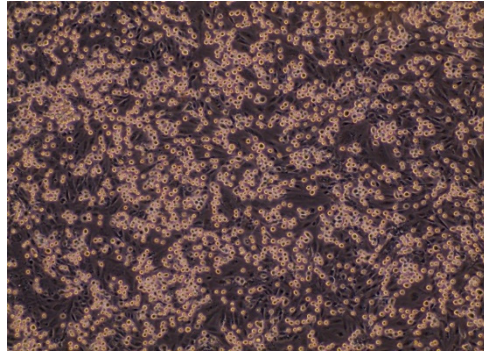
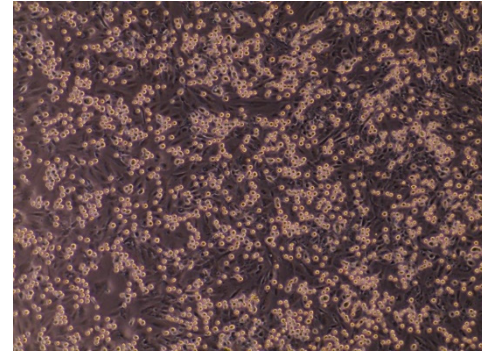


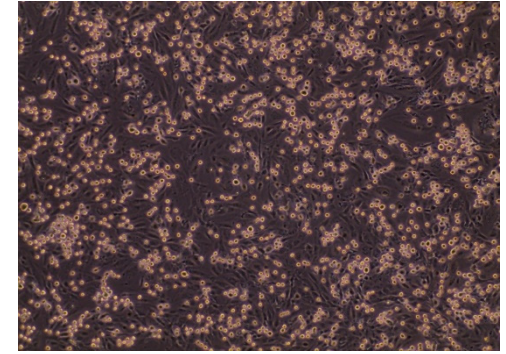
(A) Control,
 0.61 ± 0.21



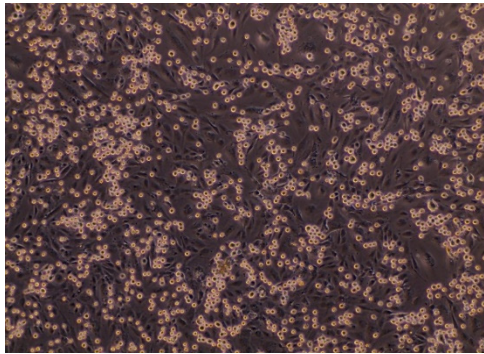
(B) TNF- α 10 ng/mL
 $11.93 \pm 0.47^\#$



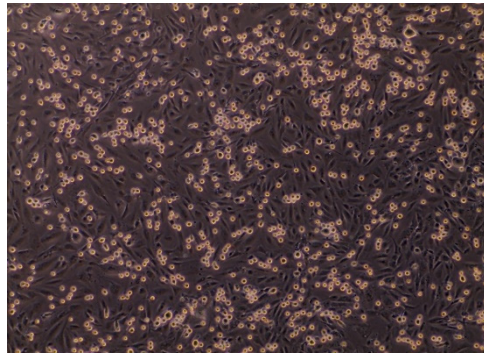
(C) B, 50 $\mu\text{g/mL}$ + TNF- α , 10
ng/mL
 10.15 ± 1.19



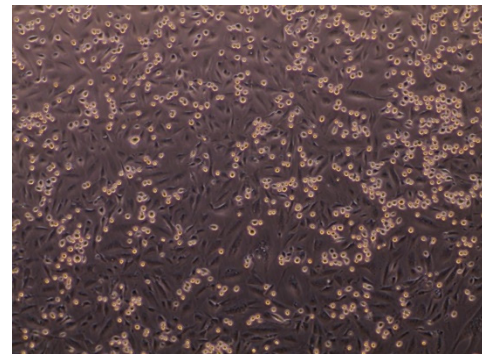
(D) HP, 250 $\mu\text{g/mL}$ + TNF- α 10
ng/mL
 $8.42 \pm 0.74^*$



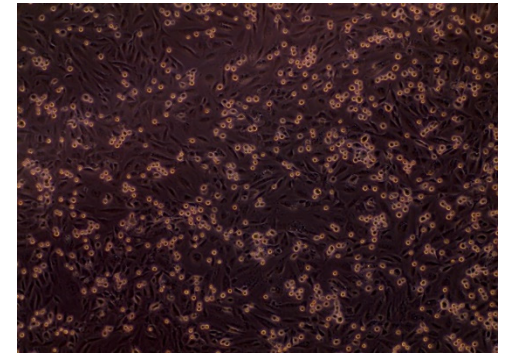
(E) E, 22.5 $\mu\text{g/mL}$ + TNF- α 10
ng/mL
 $7.81 \pm 0.63^{**}$



(F) BS, 5 $\mu\text{g/mL}$ + TNF- α 10
ng/mL
 $5.75 \pm 0.84^{**}$



(G) C, 5 $\mu\text{g/mL}$ + TNF- α 10
ng/mL
 $4.66 \pm 1.15^{**}$



(H) FF + TNF- α 10 ng/mL
 $4.02 \pm 0.97^{**}$

Figure S1. HMEC-1 were treated with FF components (4 h) alone (from (C) to (G) or in combination at halved concentration (H) and then either treated with 10 ng/mL TNF- α (from (B) to (H) or left unstimulated (A) for further 18 h. THP-1 (10^6 cells/mL) were then added to the HMEC-1 monolayers. After 1h, non-adhering cells were removed by three washes and images of HMEC-1 and adherent THP-1 cells were visualized and captured with a phase contrast microscope connected to a digital camera. Data (means \pm S.D., n = 3) are expressed as number of adherent monocytes per fields. # $p < 0.01$ versus basal (untreated) control; * $p < 0.05$ versus TNF- α alone; ** $p < 0.01$ versus TNF- α alone.