



SUPPLEMENTARY MATERIAL

***Baccharis trimera* Infusion Reduces Macrophages Activation and High-Fat Diet-Induced Metabolic Disorders in Mice**

Thalita Vieira Nascimento Ximenes¹, Raquel Carvalho¹, Iluska Senna Bonfá¹, Vanessa Samúdio Santos¹, Luciane Candeloro², Flávio Macedo Alves², Denise Brentan Silva¹, Carlos Alexandre Carollo¹, Karine de Cássia Freitas Gielow¹, Saulo Euclides Silva-Filho¹ and Mônica Cristina Toffoli-Kadri^{1*}

¹ Pharmaceutical Sciences, Food and Nutrition College, Federal University of Mato Grosso do Sul, Campo Grande 79070-900, Brazil

² Biosciences Institute, Federal University of Mato Grosso do Sul, Campo Grande 79070-900, Brazil

* Correspondence: monica.kadri@ufms.br

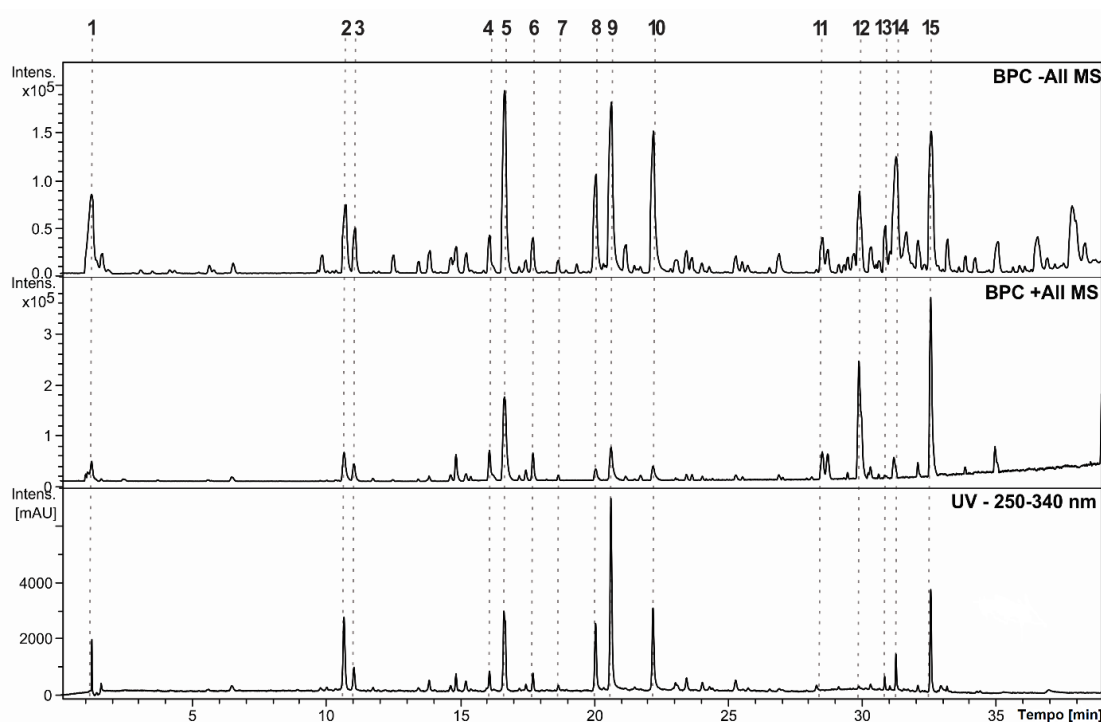


Figure S1. Chromatographic profile of the infusion of *Baccharis trimera*.

Table S1. Composition of the experimental diets.

	Diet AIN-93M (Normolipid)	High-fat Diet
Ingredients (g / kg)		
Starch	620.7	308.7
Casein	140	140
Sucrose	100	100
Soybean oil	40	40
Cellulose	50	50
Mineral Mix AIN 93	35	35
Vitamin Mix AIN 93	10	10
L-Cystine	1.8	1.8
Choline	2.5	2.5
BHT	0.008	0.008
Lard	-	312.0
Energy (Kj / kg)	15940.9	21421.2
Carbohydrates (%)	75.81	31.93
Proteins (%)	14.73	10.94
Lipids (%)	9.47	57.13
Kj / g	15.90	21.42