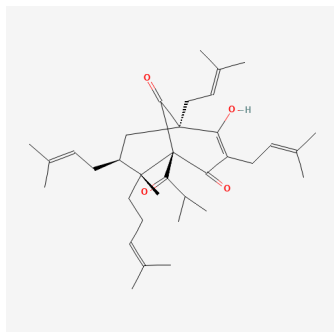
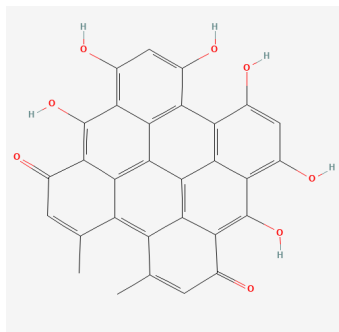


Hypericum perforatum

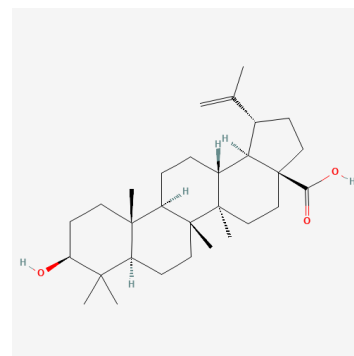


Hyperforin



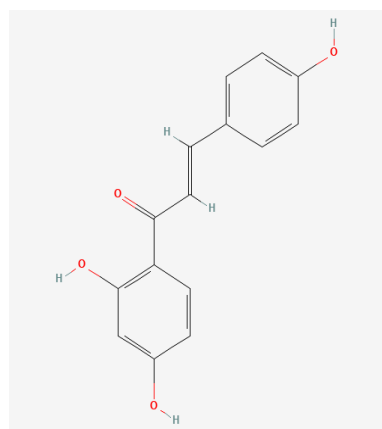
Hypericin

Betula pubescens

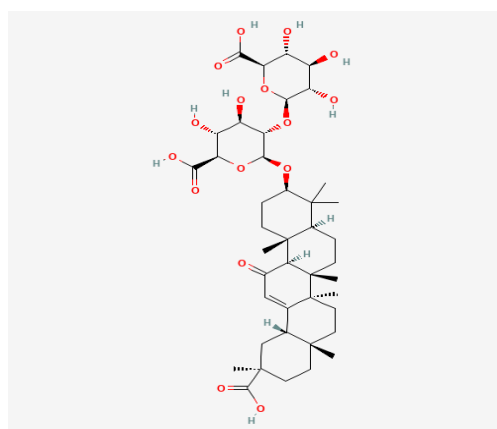


Betulinic acid

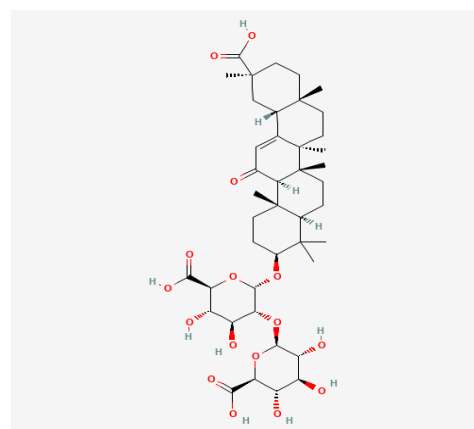
Glycyrrhiza glabra



Isoliquiritigenin

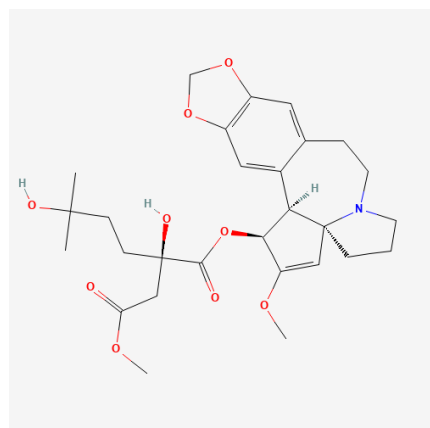


Glycyrrhizin

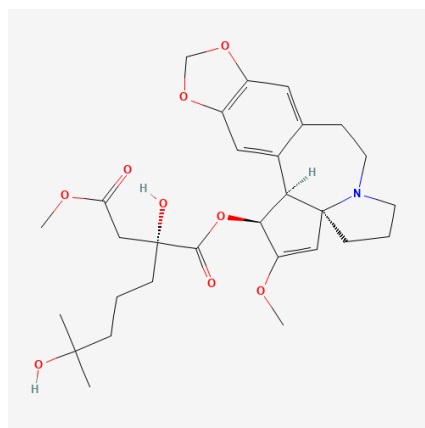


Glycyrrhizinic acid

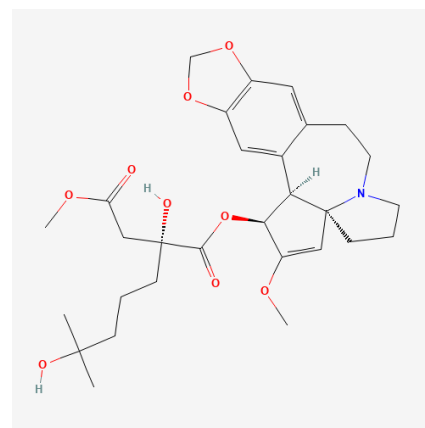
Cephalotaxus harringtonia



Harringtonin

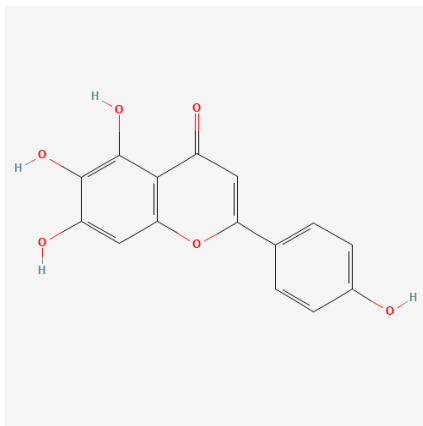


Homoharringtonin

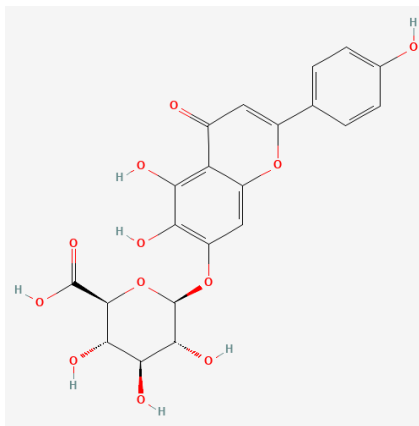


Omacetaxine

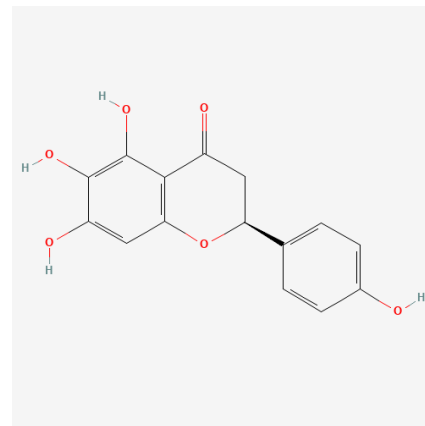
Scutellaria barbata



Scutellarein

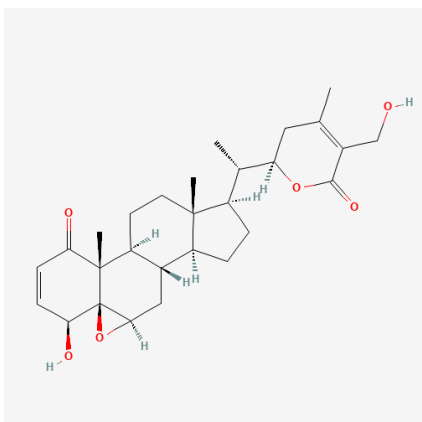


Scutellarin

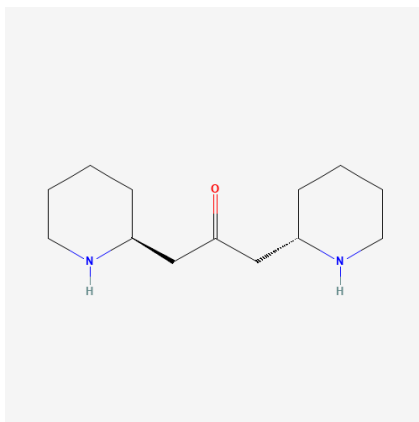


Carthamidin

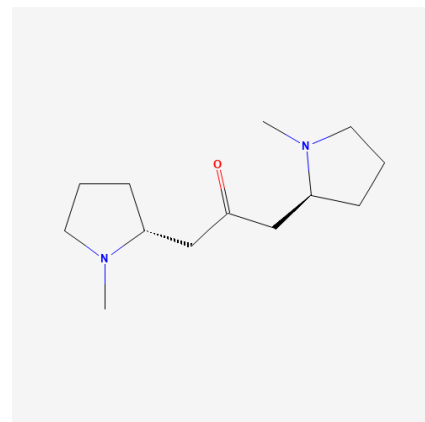
Withania somnifera



Withaferin A

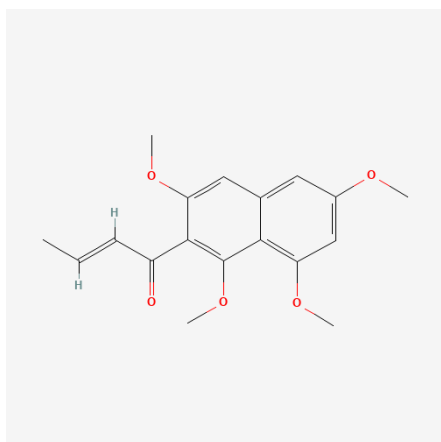


Anaferine

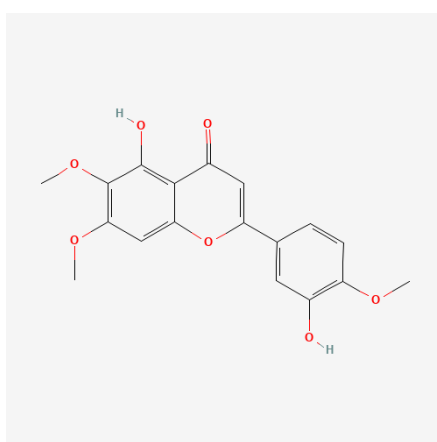


Cuseohygrine

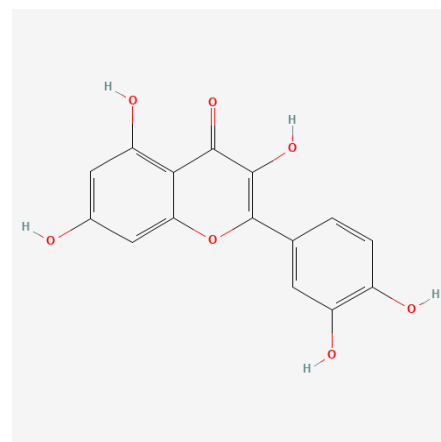
Guera senegalis



Guieranone A

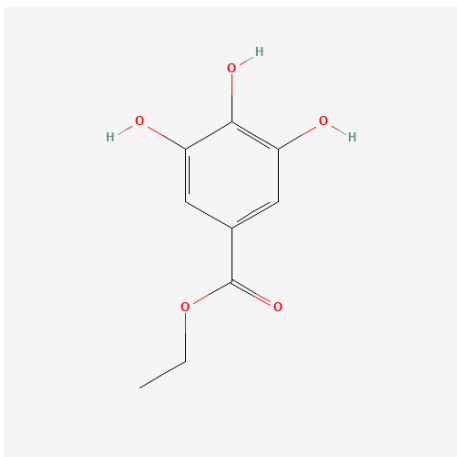


Eupatorin

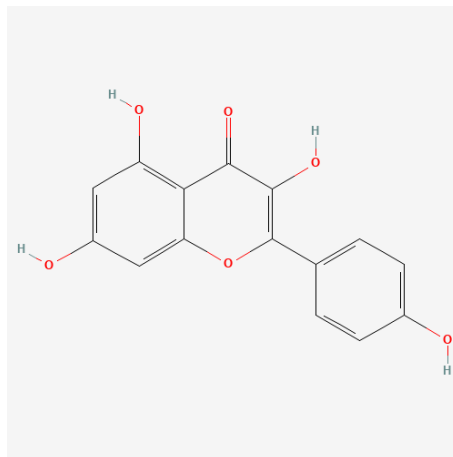


Quercetin

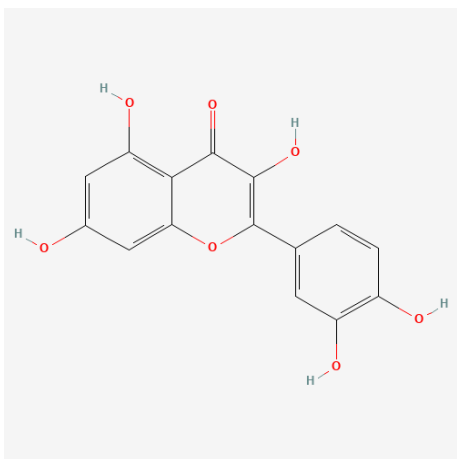
Acacia nilotica



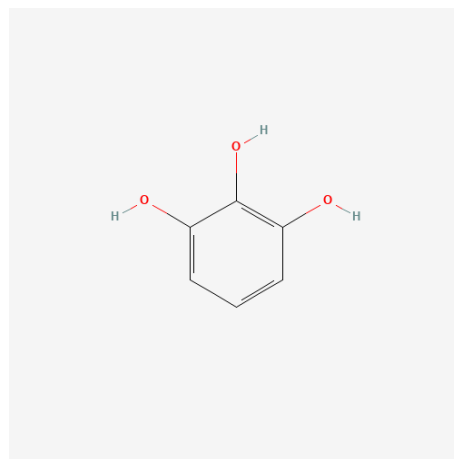
Ethylgallate



Kaempferol

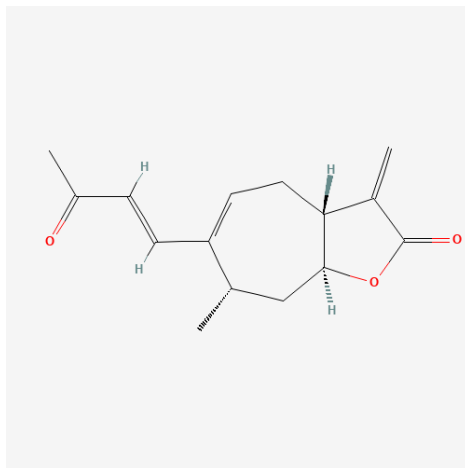


Quercetin



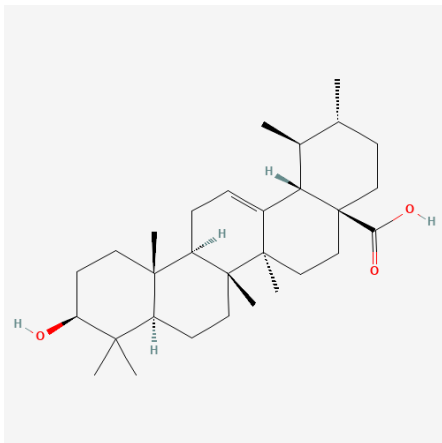
Pyrogallol

Xanthium spinosum

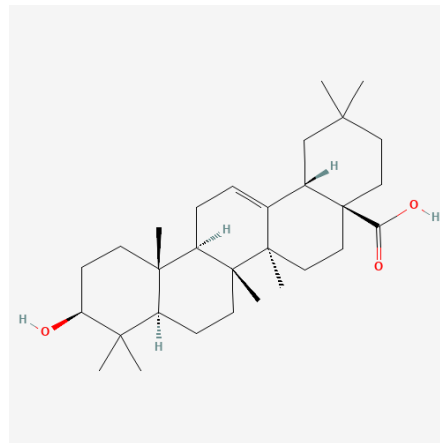


Xanthatin

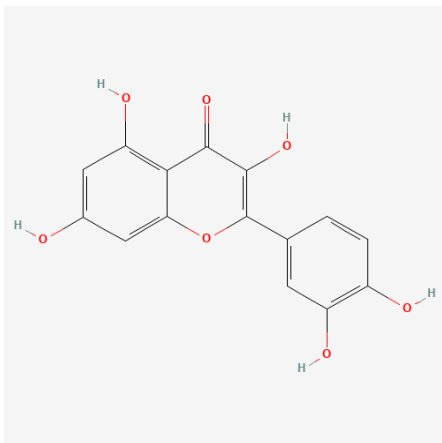
Oldenlandia diffusa



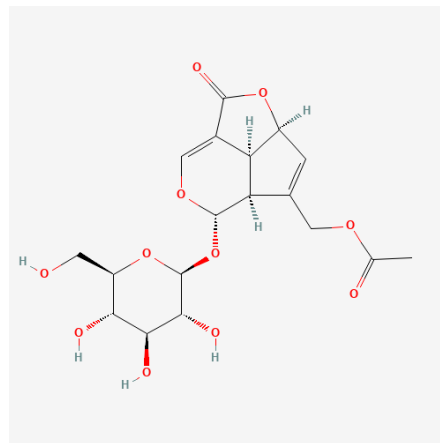
Ursolic acid



Oleanolic acid

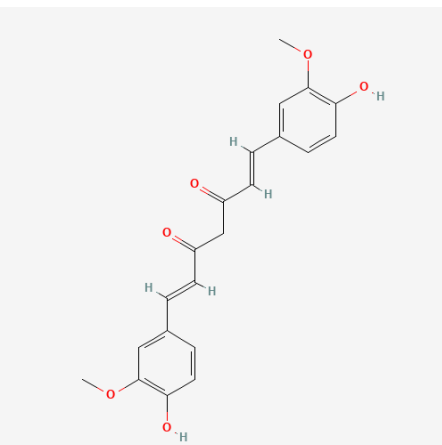


Quercetin

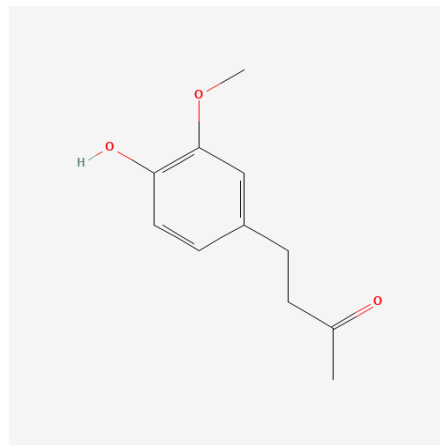


Asperuloside

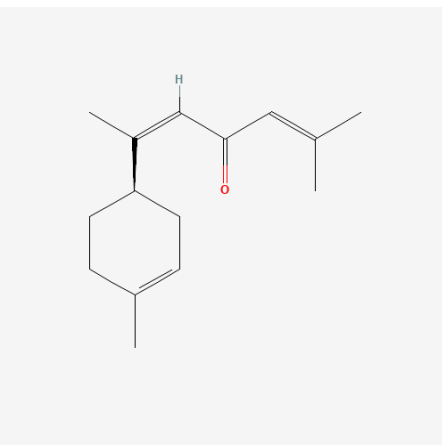
Curcuma longa



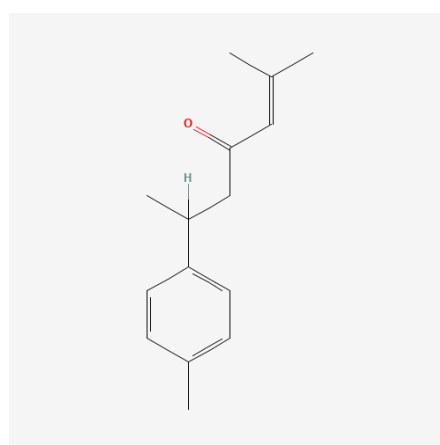
Curcumin



Zingiberone

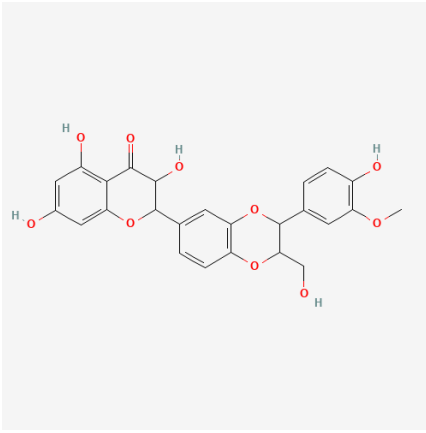


Atlantone

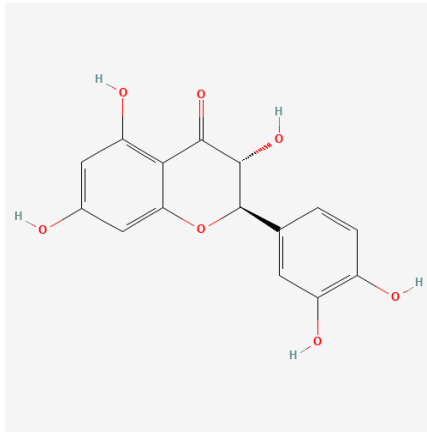


Tumerone

Silybum marianum

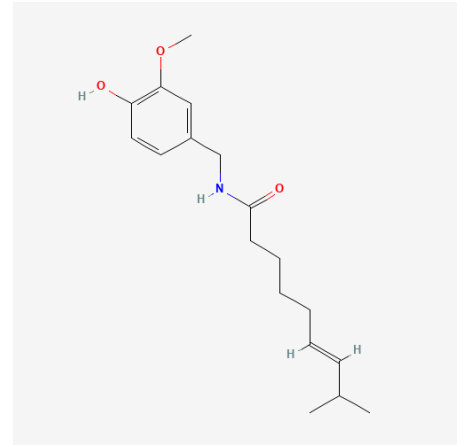


Symilarin



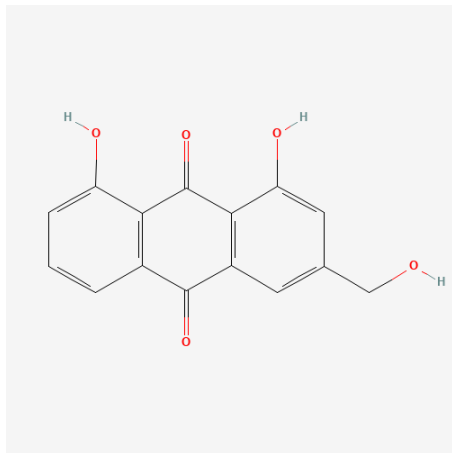
Taxifolin

Capsicum frutescens

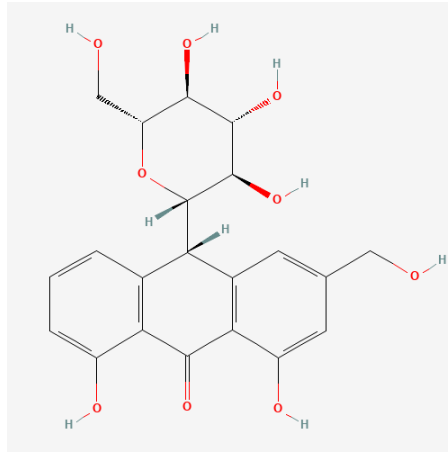


Capsaicin

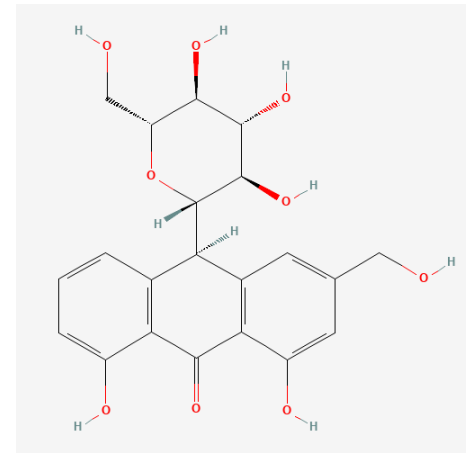
Aloe vera and Aloe arborescens



Aloe-emodin

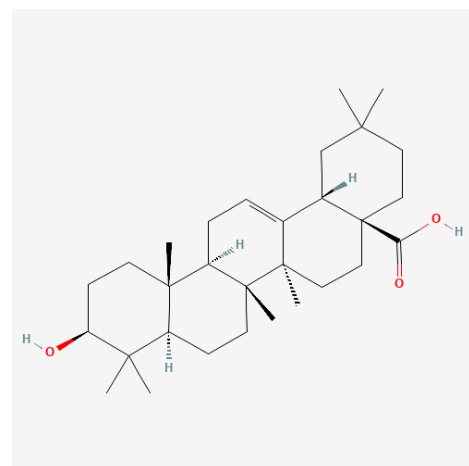


Barbaloin

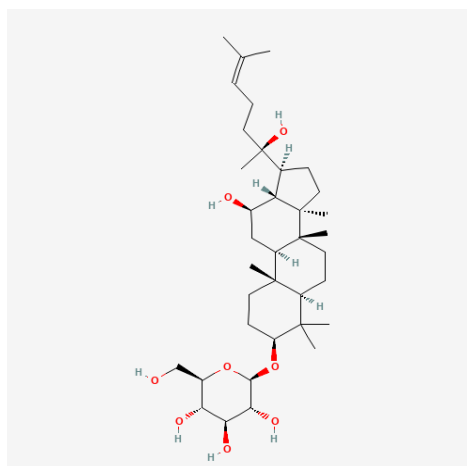


Isobarbaloin

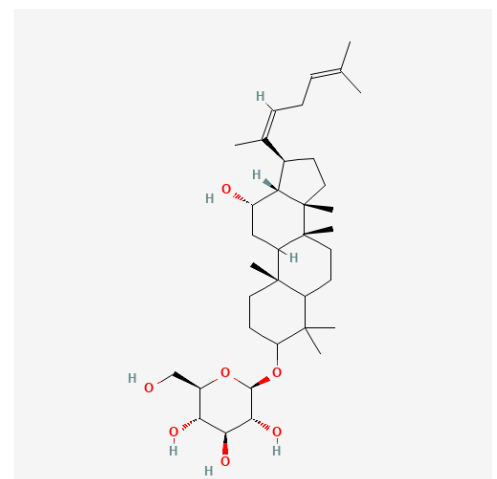
Panax quinquefolius



Oleanolic acid

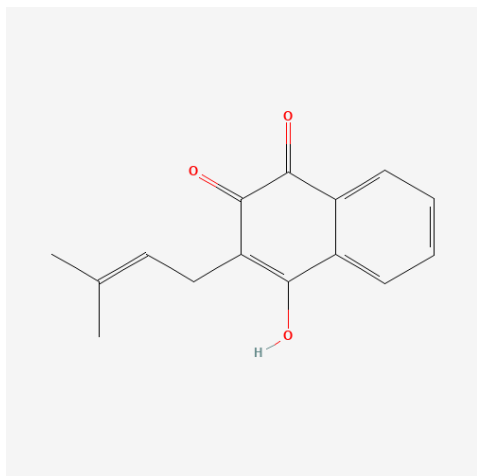


Ginsenoside-Rh2

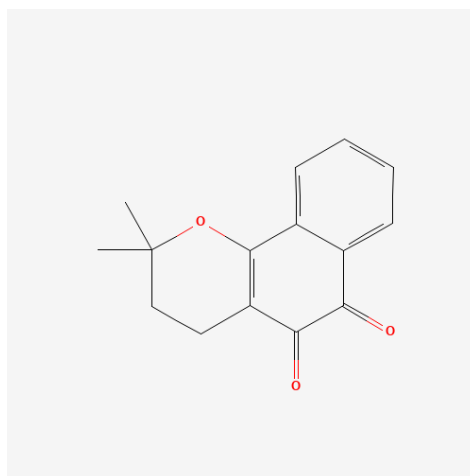


Ginsenoside-Rh3

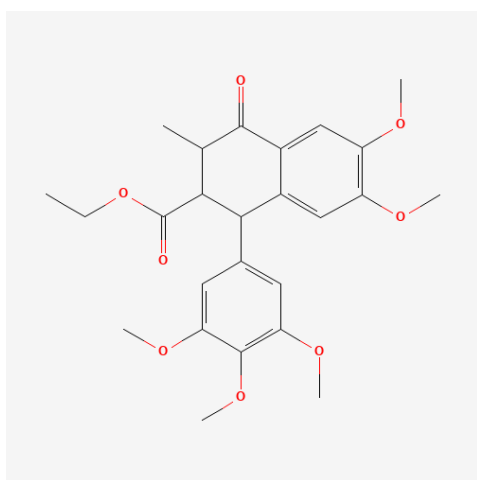
Tabebuia impetiginosa



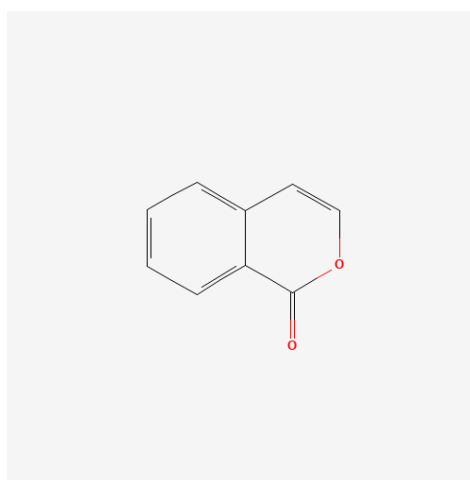
Lapachol



β -lapachone

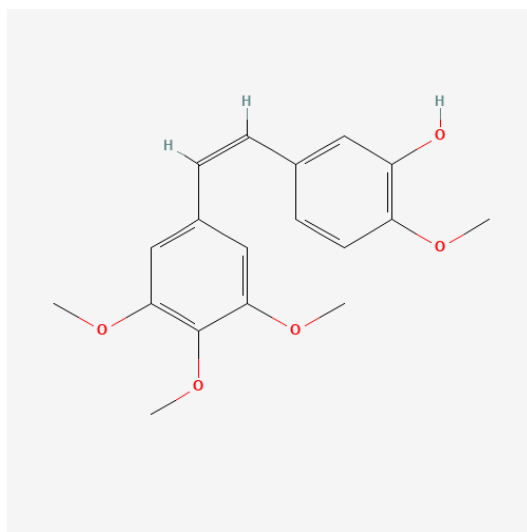


Lignan



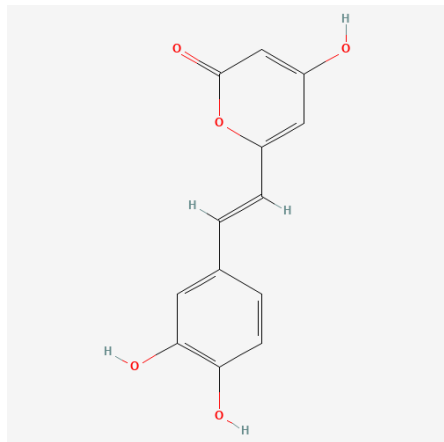
Isocoumarin

Combretum caffrum

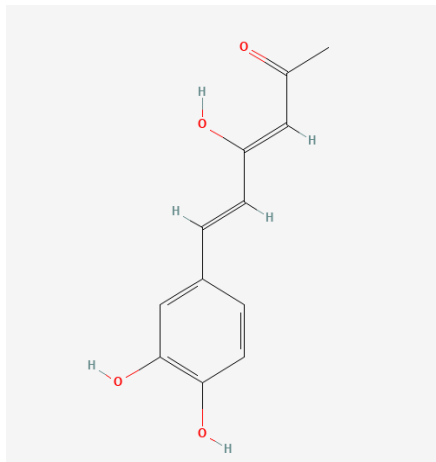


Combretastatin A4

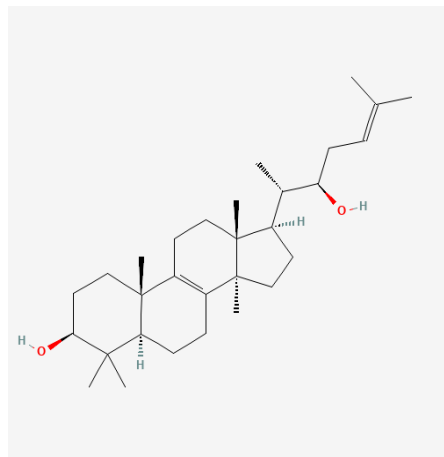
Chaga (Inonotus obliquus)



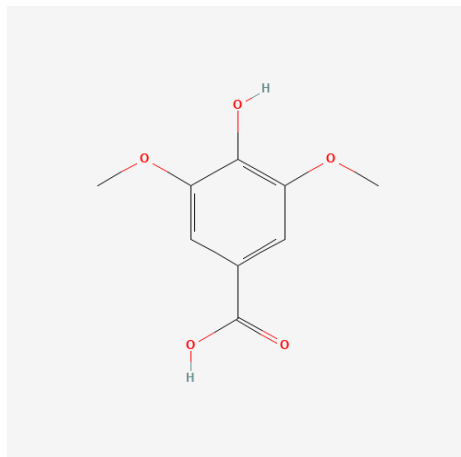
Hispidin



Hispolon

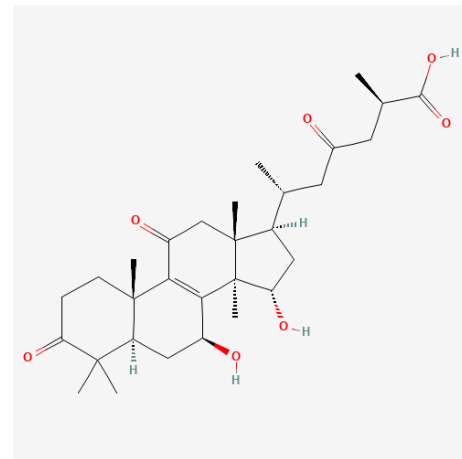


Inotodiol



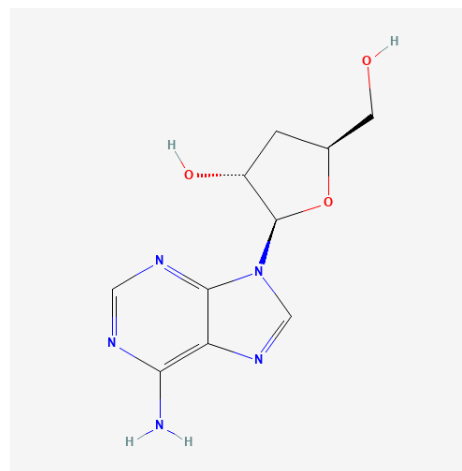
Syringic acid

Reishi (Ganoderma lucidum)



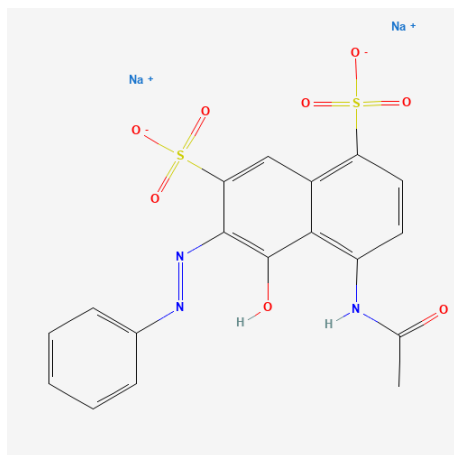
Ganoderic acid

Cordyceps sinensis

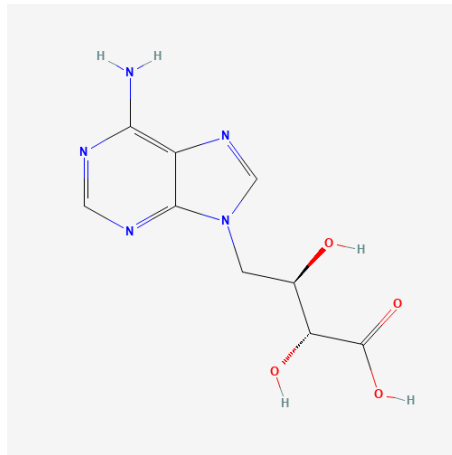


Cordycepin

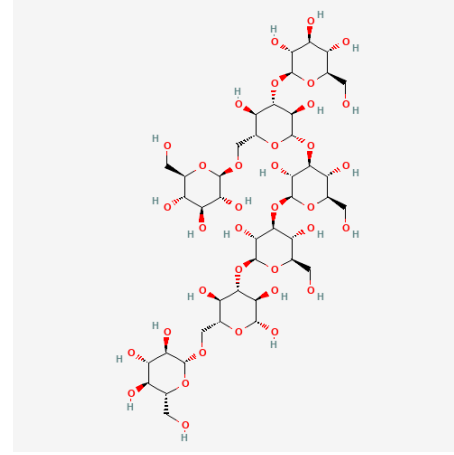
Shiitake (Lentinula edodes)



Lignin



Erytadenine



Lentinan