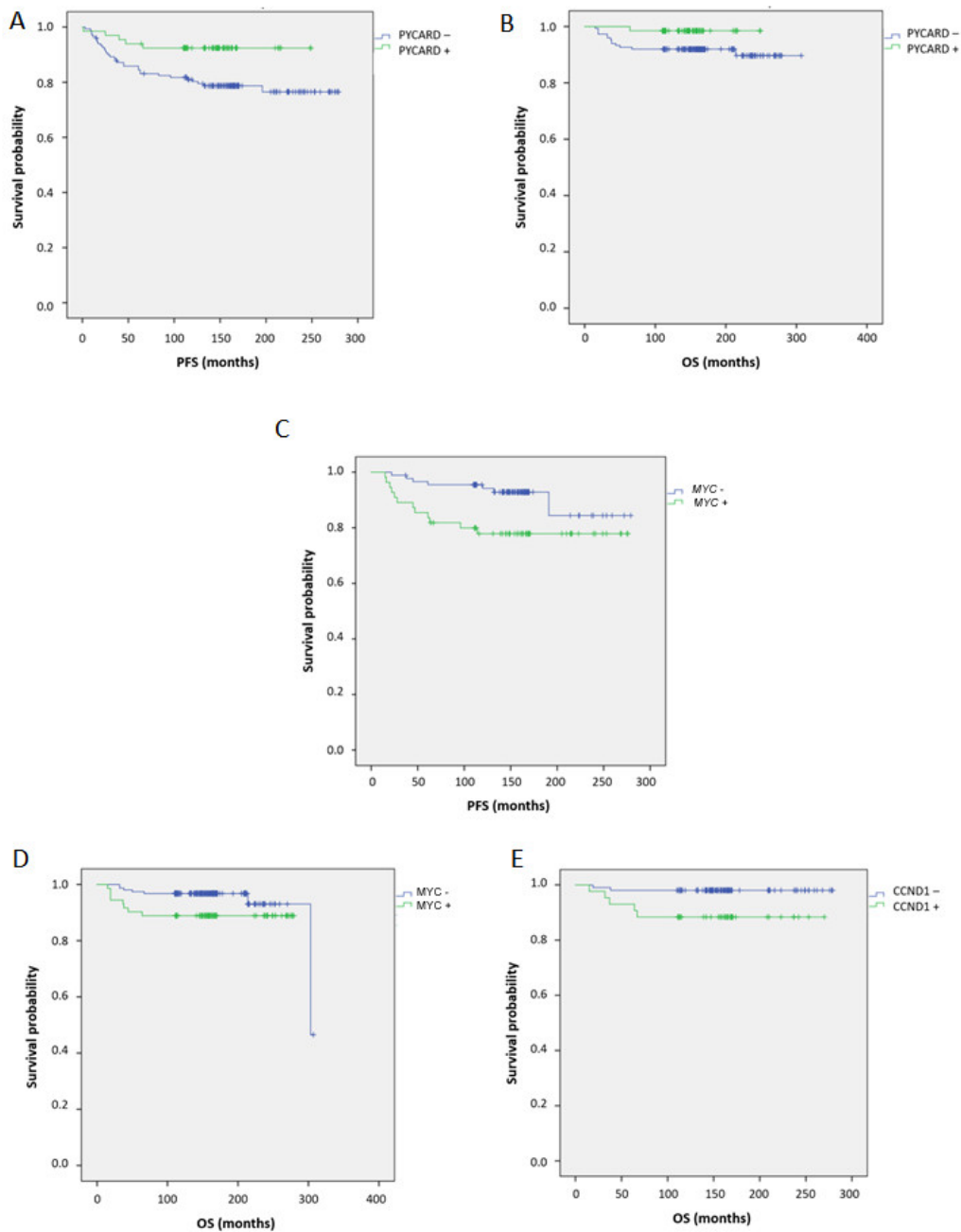


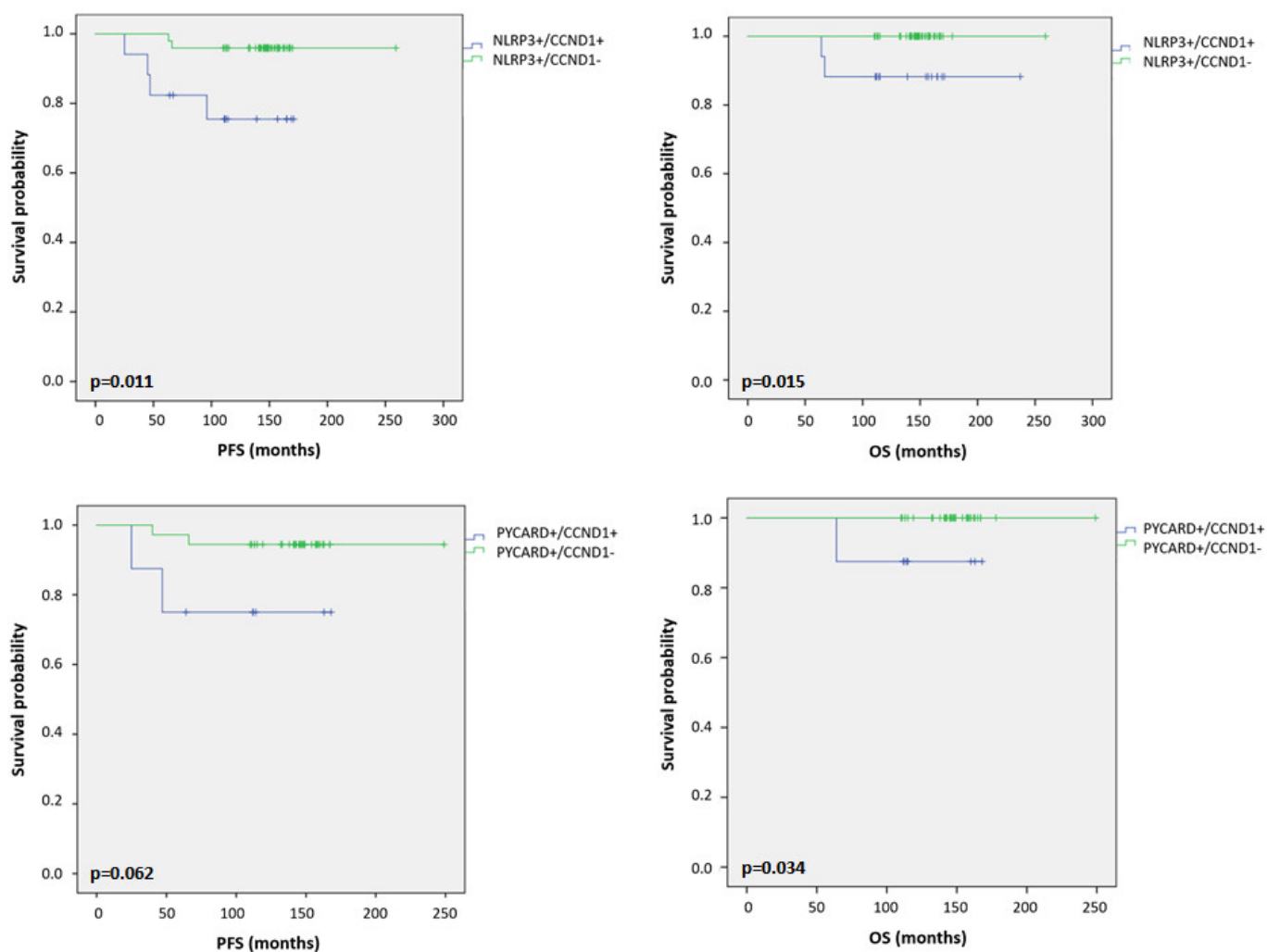
**Table S1.** Characteristics, dilutions and localization of used antibodies

Antibody target	Antibody type	Antigen retrieval buffer	Dilution	Supplier	Code	Localization
NLRP3	Rabbit polyclonal	EDTA	1:50	abcam	Ab214185	cytoplasm
Pycard	Mouse monoclonal	Citrate	1:600	ThermoFisher	MA5-26363	cytoplasm
Cyclin D1						
MYC						

Citrate buffer at pH 6; ethylenediaminetetraacetic acid (EDTA) at pH 7.8. NLRP3: NOD-like receptor protein 3; PYCARD: Apoptosis-Associated Speck-Like Protein Containing a Pyrin and CARD domain;



**Figure S1.** Kaplan–Maier curve analysis. (A) Kaplan–Maier curve for PFS according to PYCARD positive versus negative patients( $p=0.017$ ). (B) Kaplan–Maier curve for OS according to PYCARD positive versus negative patients ( $p=0.059$ ). (C) Kaplan–Maier curve for PFS according to MYC gene positive versus negative patients ( $p=0.017$ ). (D) Kaplan–Maier curve for OS according to MYC positive versus negative patients( $p=0.0041$ ) (E) Kaplan–Maier curve for OS according to *CCND1* positive versus negative patients( $p=0.013$ ).



**Figure S2.** Kaplan-Maier curve analysis in Luminal phenotypes. (A) Kaplan-Maier curve for progression-free survival (PFS) according to NLRP3+/CCND1+ versus NLRP3+/CCND1- patients (p=0.011). (B) Kaplan-Maier curve for overall survival (OS) according to NLRP3+/CCND1+ versus NLRP3+/CCND1- patients (p=0.015). (C) Kaplan-Maier curve for PFS according to PYCARD+/CCND1+ versus PYCARD+/CCND1- patients (p=0.062). (D) Kaplan-Maier curve for OS according to PYCARD+/CCND1+ versus PYCARD+/CCND1- patients (p=0.034).