

# Synthesis, Characterization and In Vitro Evaluation of Hybrid Monomeric Peptides Suited for Multimodal Imaging by PET/OI: Extending the Concept of Charge-Cell Binding Correlation

Marco Maspero<sup>a,b</sup>, Xia Cheng<sup>c</sup>, Valeska von Kiedrowski<sup>c</sup>, Clelia Dallanoce<sup>b</sup>, Björn Wängler<sup>c</sup>, Ralph Hübner<sup>a,†\*</sup> and Carmen Wängler<sup>a,†\*</sup>

<sup>a</sup> Biomedical Chemistry, Department of Clinical Radiology and Nuclear Medicine, Medical Faculty Mannheim, Heidelberg University, Theodor-Kutzer-Ufer 1-3, 68167 Mannheim, Germany. E-mail: Ralph.Huebner@medma.uni-heidelberg.de (R.H.); Carmen.Waengler@medma.uni-heidelberg.de (C.W.)

<sup>b</sup> Medicinal Chemistry Section “Pietro Pratesi”, Department of Pharmaceutical Sciences, University of Milan, Via L. Mangiagalli 25, 20133, Milan, Italy

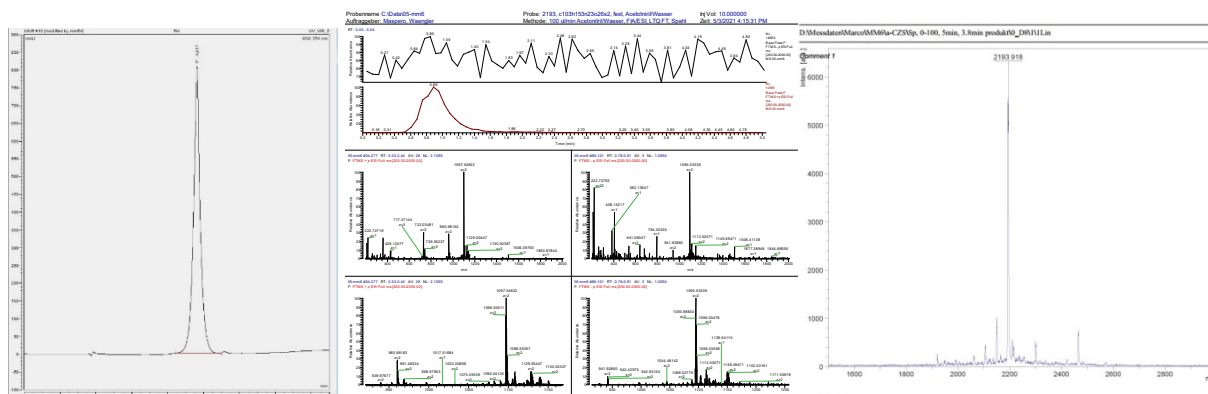
<sup>c</sup> Molecular Imaging and Radiochemistry, Department of Clinical Radiology and Nuclear Medicine, Medical Faculty Mannheim, Heidelberg University, Theodor-Kutzer-Ufer 1-3, 68167 Mannheim, Germany

<sup>†</sup> Authors share last position

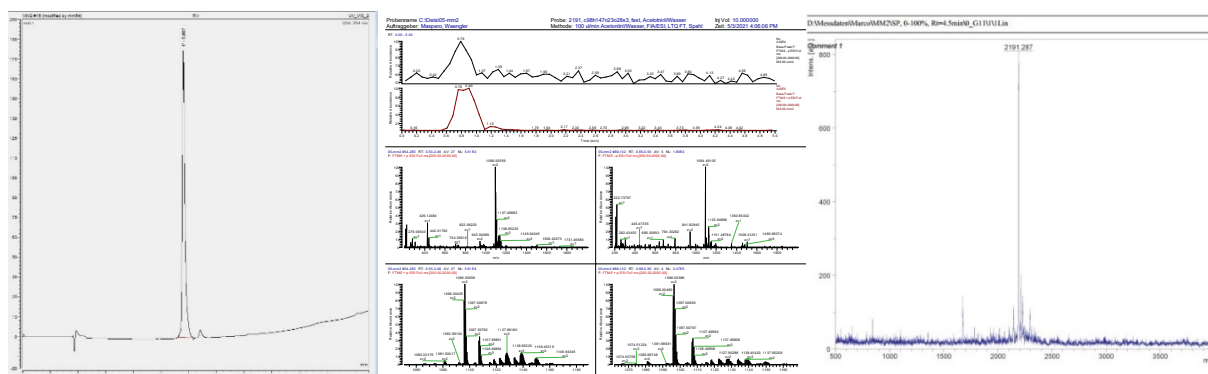
## Table of Contents

<b>Supplementary figures.....</b>	<b>S2 – S7</b>
Figures S1–S12.	HPLC, ESI and MALDI mass spectra of <b>7 – 10 a</b> , <b>7 – 10 b</b> and <b>7 – 10 c</b>
Figures S13–S16	Normalized absorption and emission spectra of <b>7 – 10 a</b> , <b>7 – 10 b</b> and <b>7 – 10 c</b>

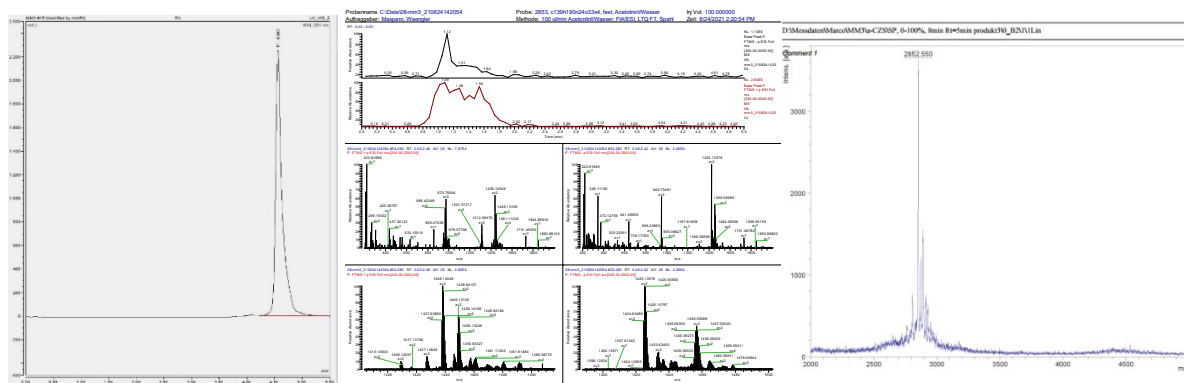
## Supplementary figures



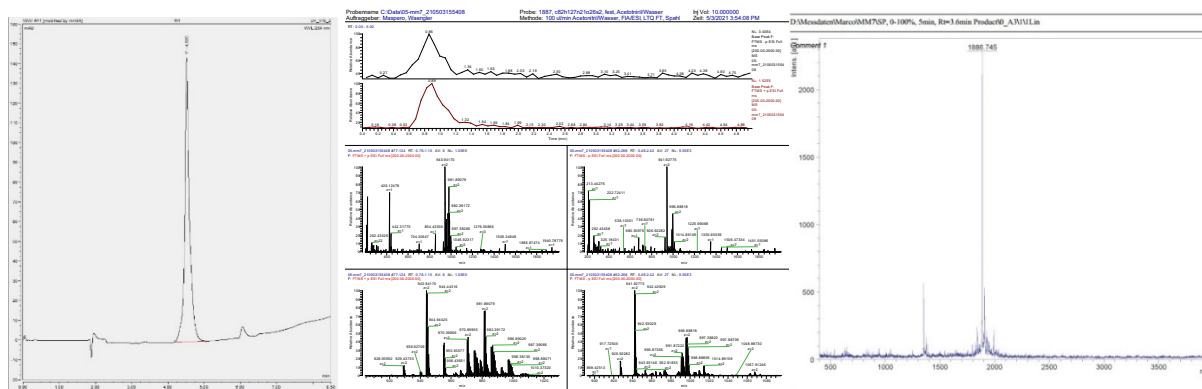
**Figure S1** Analytical data for **7 a** (HPLC, ESI and MALDI mass spectroscopy).



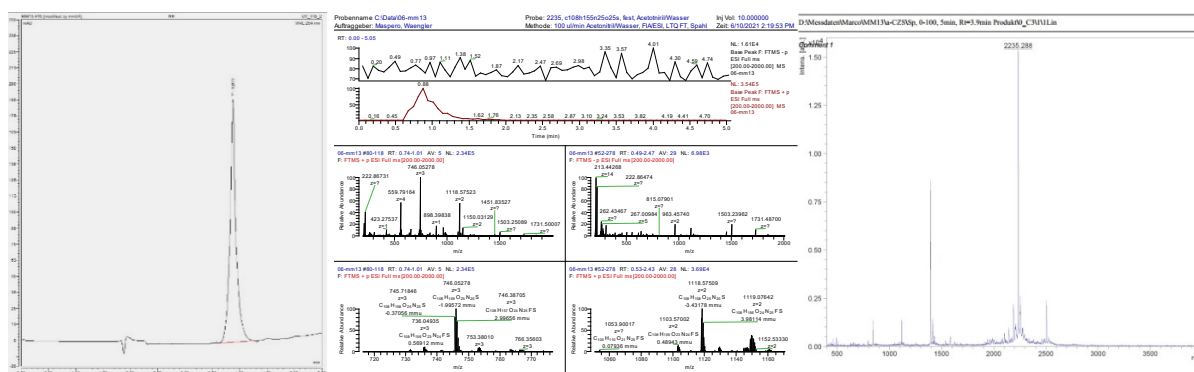
**Figure S2** Analytical data for **8 a** (HPLC, ESI and MALDI mass spectroscopy).



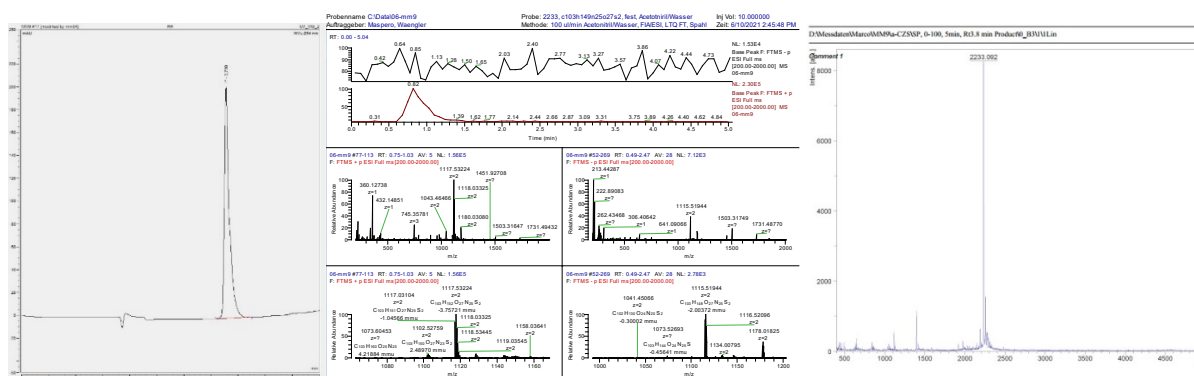
**Figure S3** Analytical data for **9 a** (HPLC, ESI and MALDI mass spectroscopy).



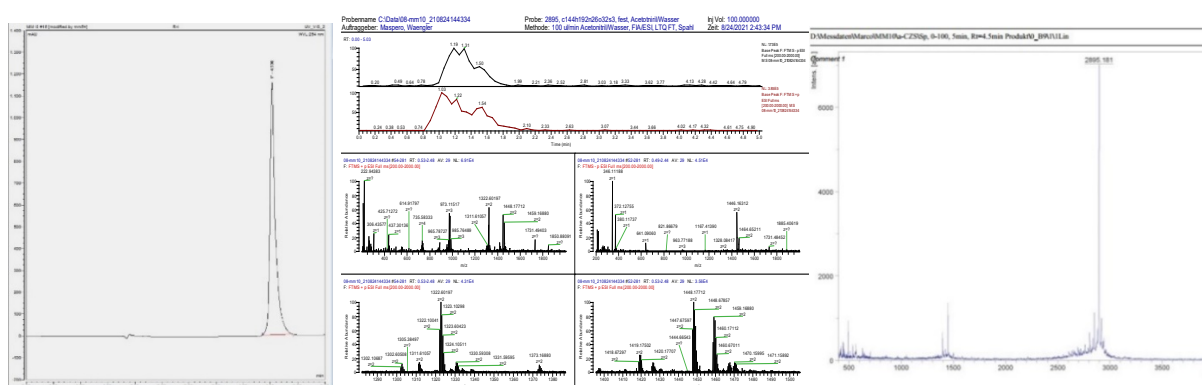
**Figure S4** Analytical data for **10 a** (HPLC, ESI and MALDI mass spectroscopy).



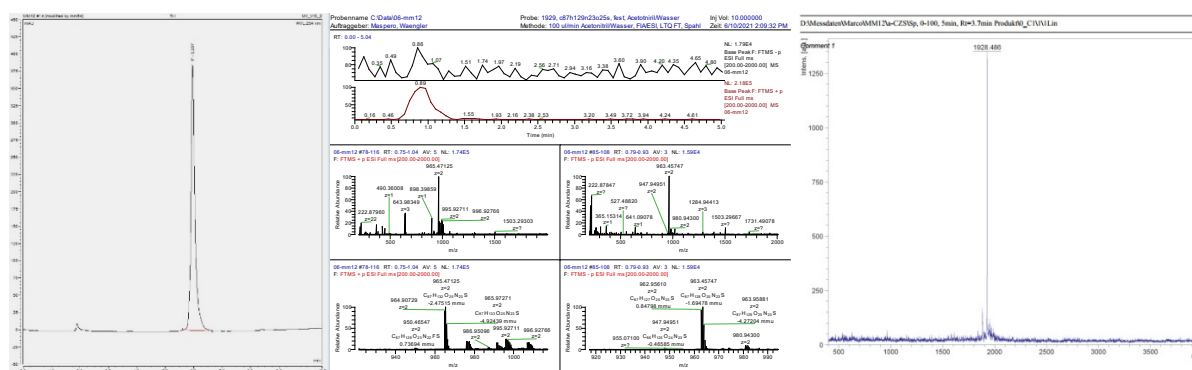
**Figure S5** Analytical data for **7 b** (HPLC, ESI and MALDI mass spectroscopy).



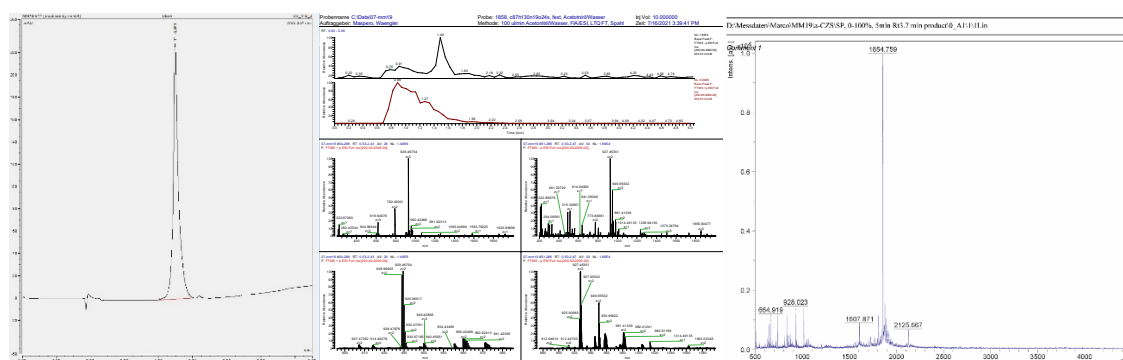
**Figure S6** Analytical data for **8 b** (HPLC, ESI and MALDI mass spectroscopy).



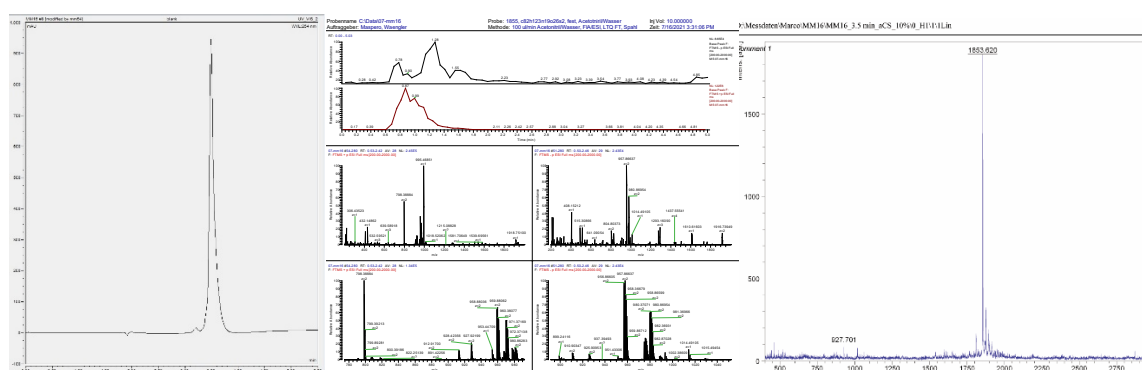
**Figure S7** Analytical data for **9 b** (HPLC, ESI and MALDI mass spectroscopy).



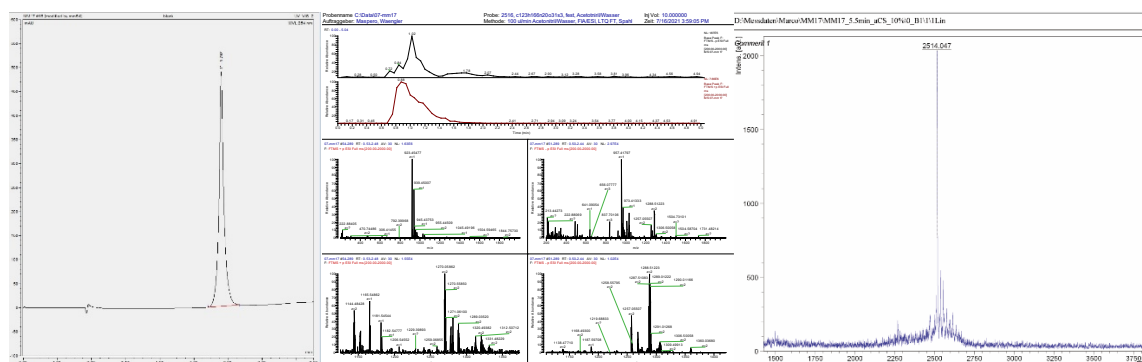
**Figure S8** Analytical data for **10 b** (HPLC, ESI and MALDI mass spectroscopy).



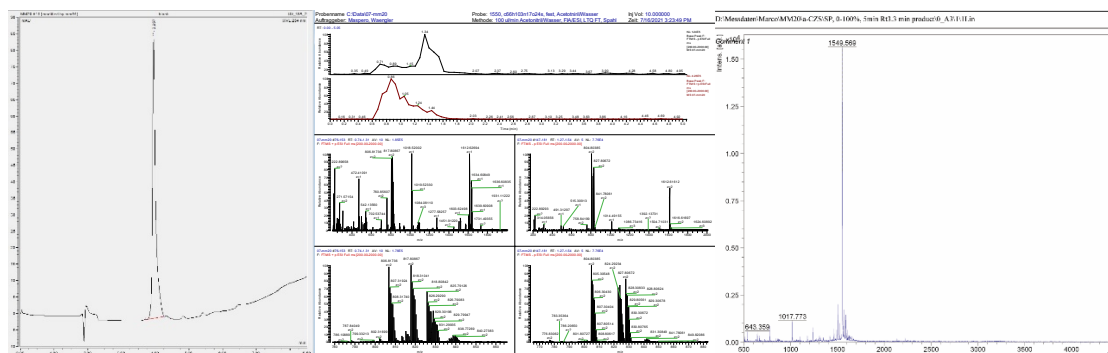
**Figure S9** Analytical data for **7 c** (HPLC, ESI and MALDI mass spectroscopy).



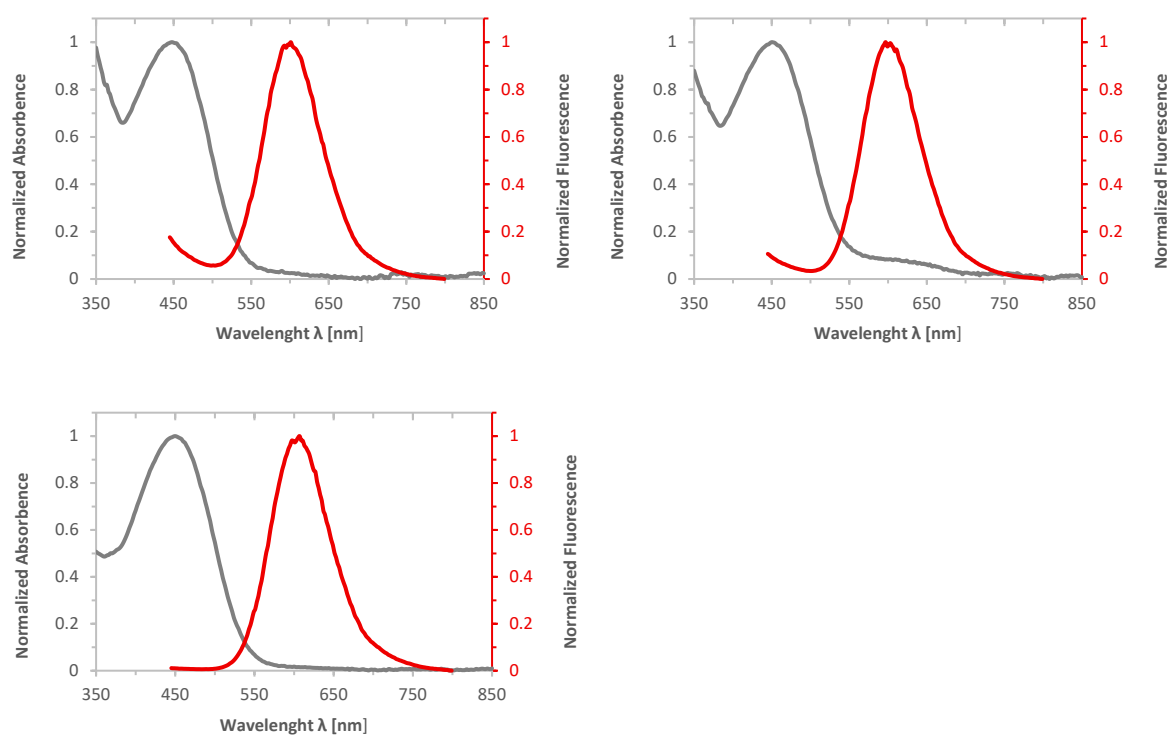
**Figure S10** Analytical data for **8 c** (HPLC, ESI and MALDI mass spectroscopy).



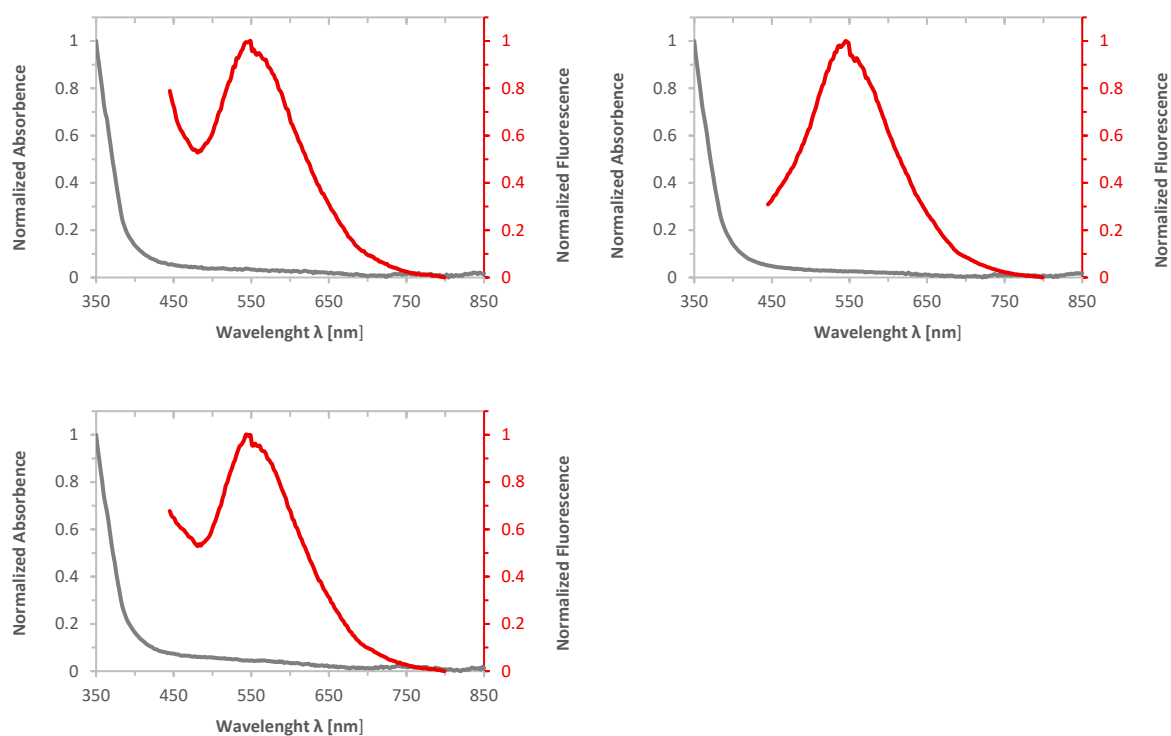
**Figure S11** Analytical data for **9 c** (HPLC, ESI and MALDI mass spectroscopy).



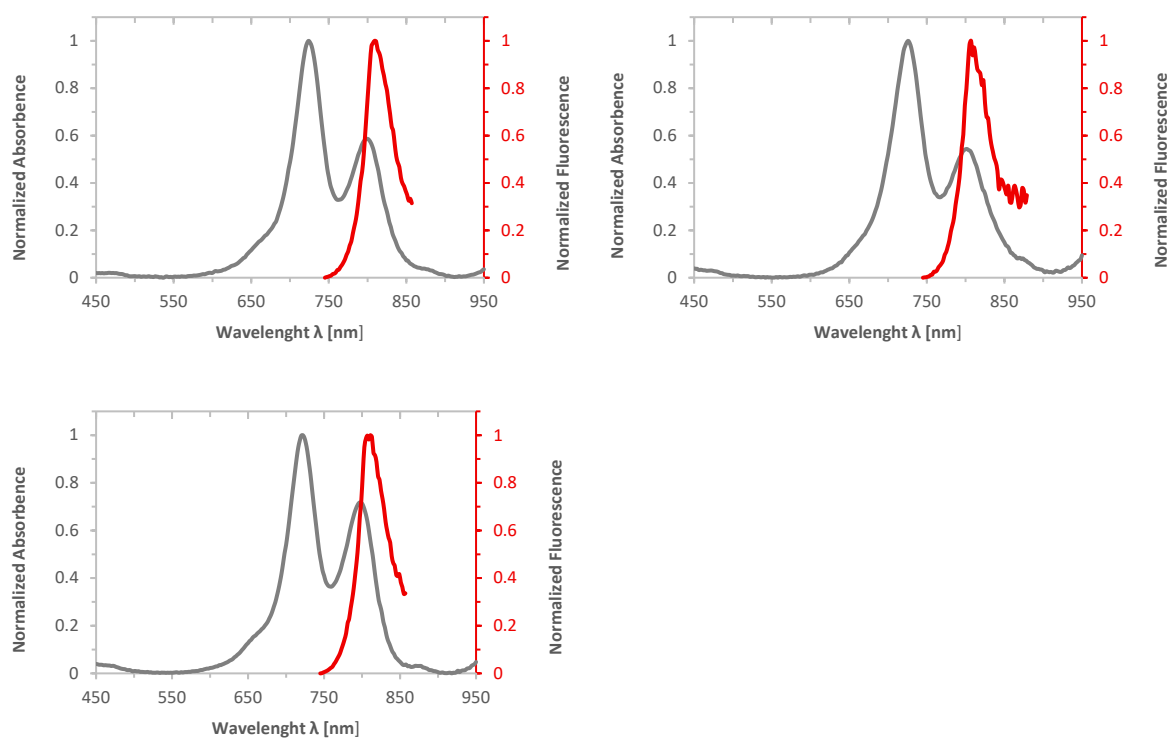
**Figure S12** Analytical data for **10 c** (HPLC, ESI and MALDI mass spectroscopy).



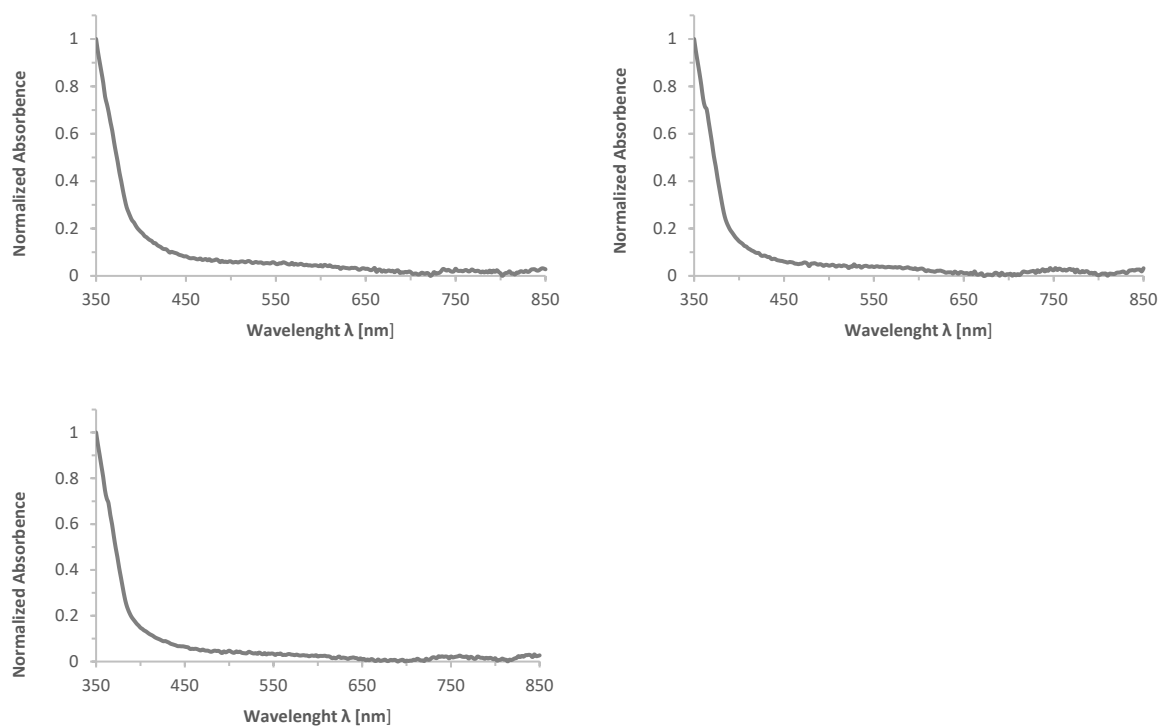
**Figure S13** Normalized absorption and emission spectra of **7 a** (top left), **7 b** (top right) and **7 c** (bottom left), recorded in H<sub>2</sub>O at a concentration of  $c = 1.0 \times 10^{-5}$  mol/L, emission wavelength  $\lambda = 400$  nm.



**Figure S14** Normalized absorption and emission spectra of **8 a** (top left), **8 b** (top right) and **8 c** (bottom left), recorded in H<sub>2</sub>O at a concentration of  $c = 1.0 \times 10^{-5}$  mol/L, emission wavelength  $\lambda = 400$  nm.



**Figure S15** Normalized absorption and emission spectra of **9 a** (top left), **9 b** (top right) and **9 c** (bottom left), recorded in H<sub>2</sub>O at a concentration of  $c = 1.0 \times 10^{-5}$  mol/L, emission wavelength  $\lambda = 700$  nm.



**Figure S16** Normalized absorption spectra of **10 a** (top left), **10 b** (top right) and **10 c** (bottom left), recorded in H<sub>2</sub>O at a concentration of  $c = 1.0 \times 10^{-5}$  mol/L, emission wavelength  $\lambda = 400$  nm.