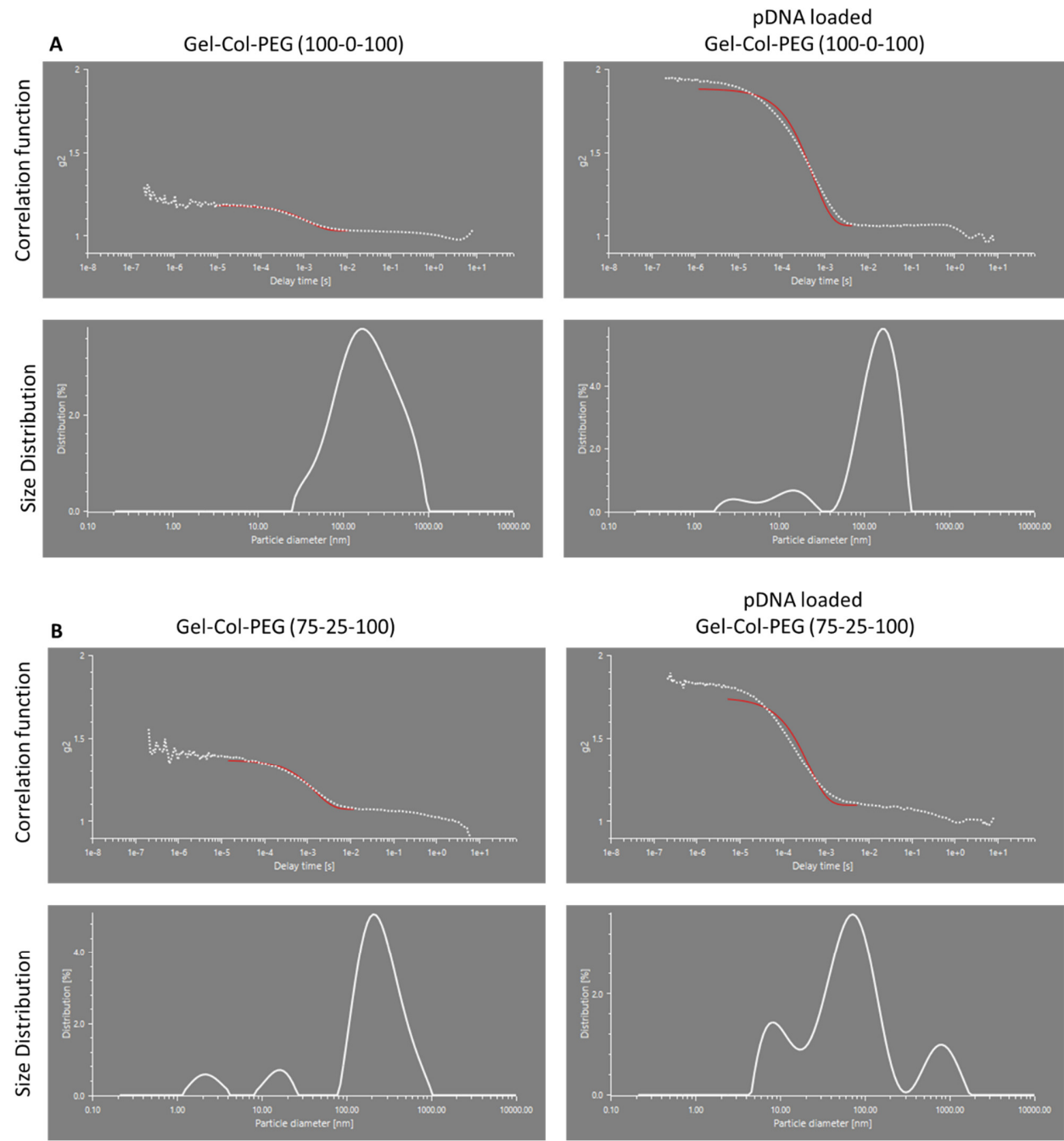


Supplementary Information



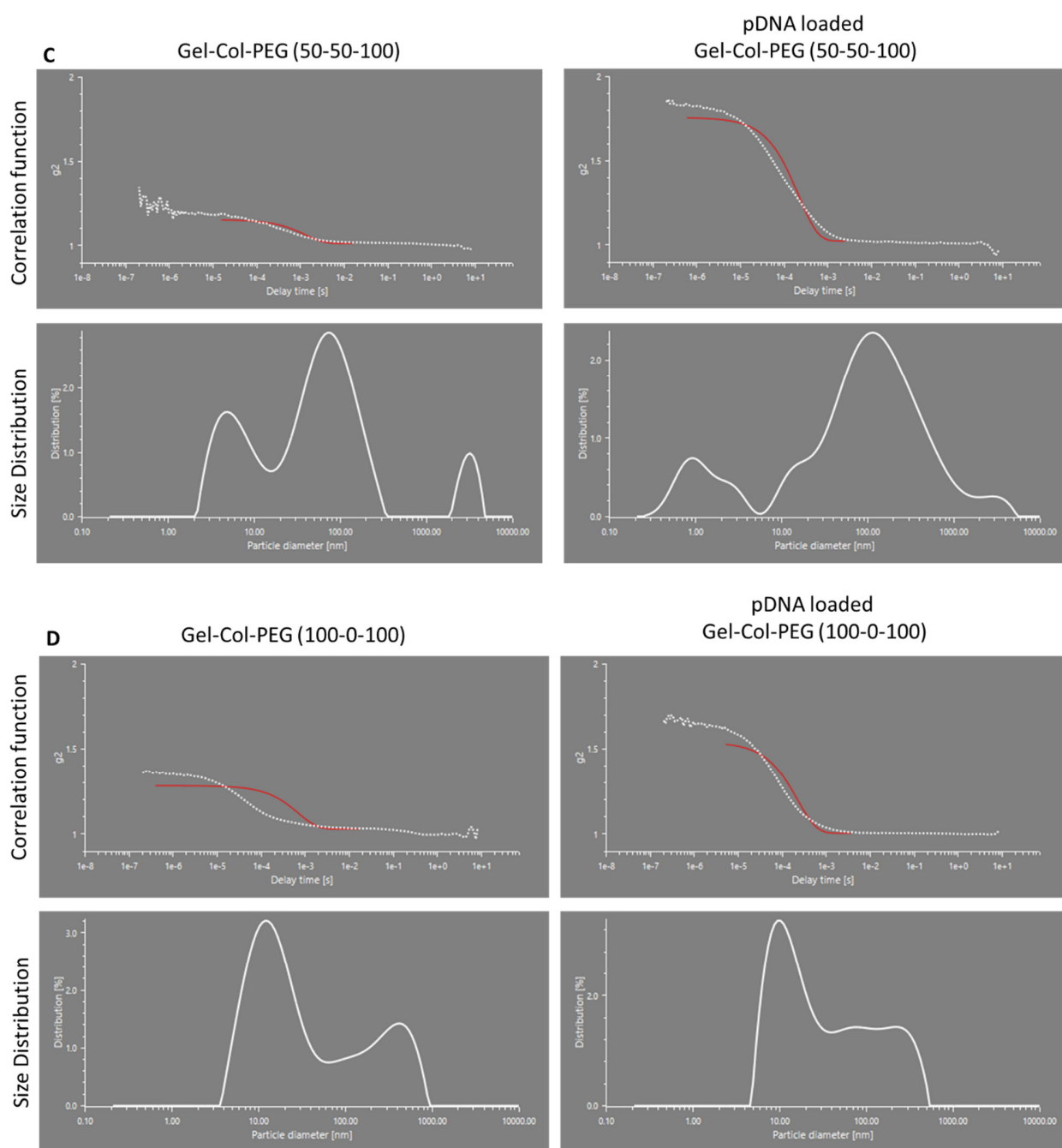
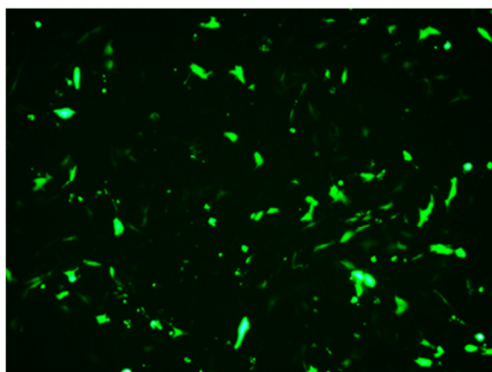
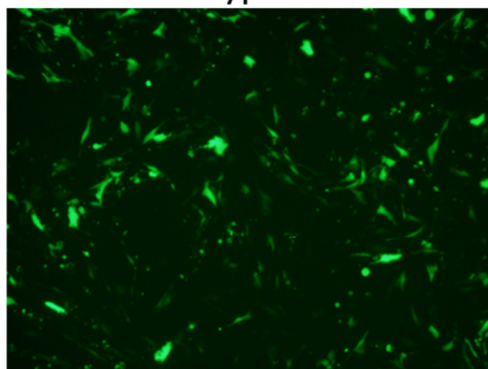


Figure S1. Correlation function and size distribution of particles released from different volume ratio Gel-Col-PEG mats (A-D) in comparison to mats without particles.

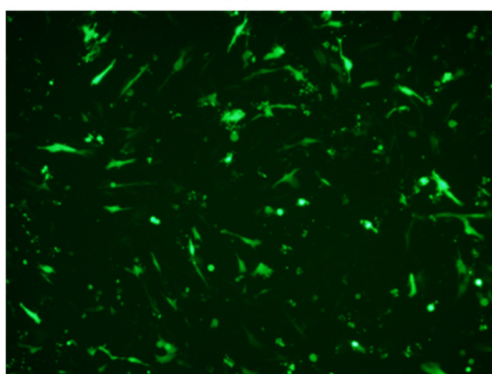
0 min of incubation with
trypsin



10 min of incubation with
trypsin



20 min of incubation with
trypsin



30 min of incubation with
trypsin

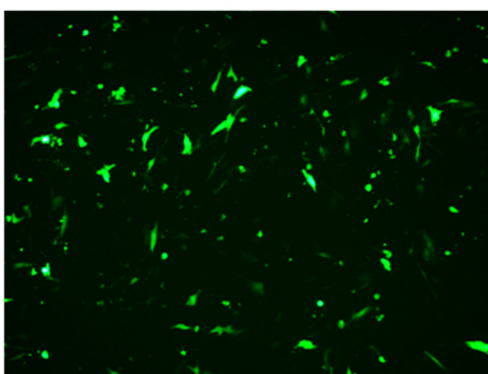


Figure S2. The complexes were incubated in trypsin for only 5 min to dissolve the mats prior to any further testing. For assessment here, up to 30 min incubation with trypsin is used to ensure full exposure of the complexes.