

Supplementary Material:

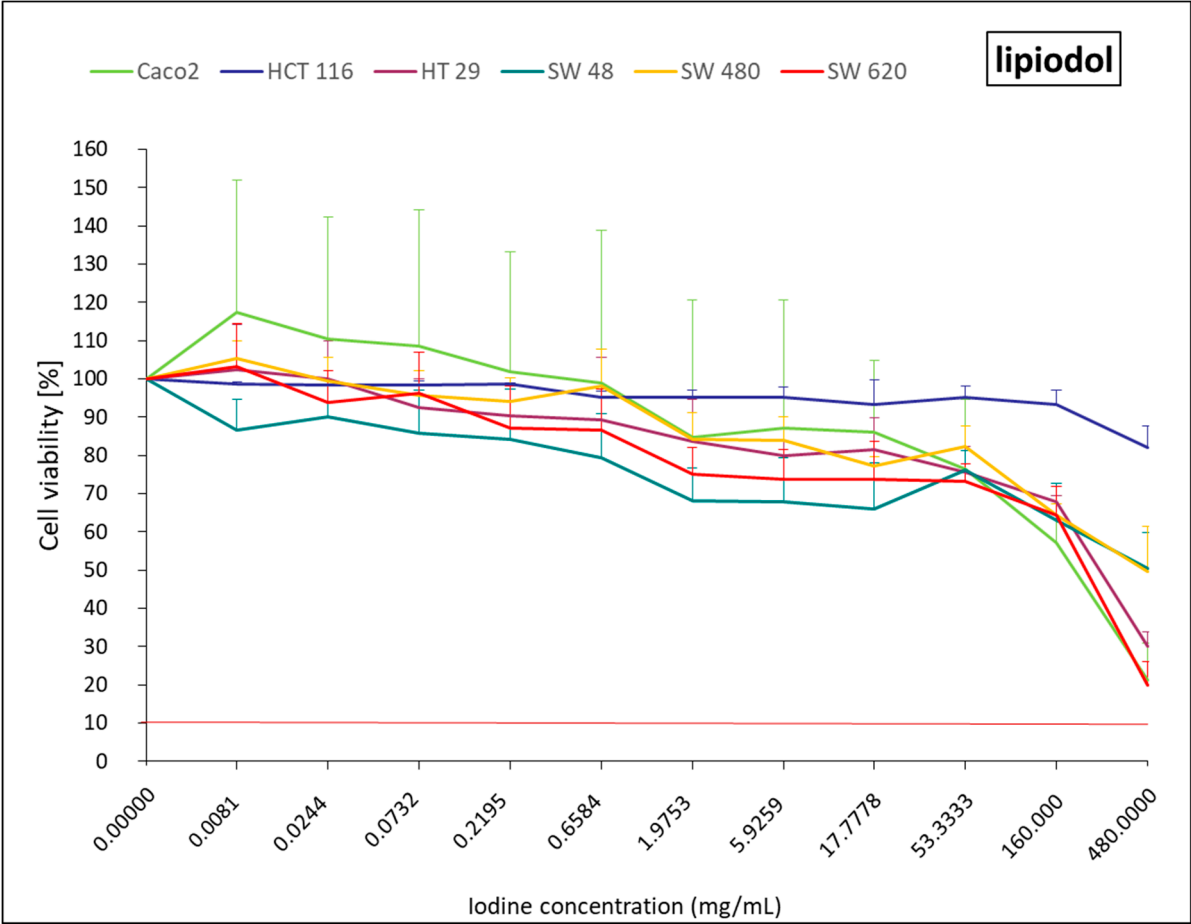


Figure S1. Colorectal cancer cell line viability curves after a 30-min time-contact with lipiodol. The horizontal red line represents 10% of cell viability. The results are presented after normalization with the control cells (untreated condition).

Table S1. Statistical analysis (LSD-Fisher) for cell viability curves. Values represents the LSD-Fisher p-value for any concentration versus control, for each drug and each cell line. P-value <0.05 are in red.

| | doxorubicin | | | | | |
|----------------|-------------|----------|----------|----------|----------|----------|
| | CaCO2 | HCT 116 | HT29 | SW48 | SW480 | SW620 |
| C Max / 59 049 | 0.783576 | 0.180173 | 0.276931 | 0.096282 | 0.000682 | 0.033041 |
| C Max / 19 683 | 0.562118 | 0.044211 | 0.009418 | 0.008290 | 0.000001 | 0.000083 |
| C Max / 6561 | 0.923713 | 0.165543 | 0.000331 | 0.000473 | 0.000000 | 0.000005 |
| C Max / 2187 | 0.899942 | 0.000419 | 0.000002 | 0.000063 | 0.000000 | 0.000000 |
| C Max / 729 | 0.895942 | 0.000000 | 0.000000 | 0.000023 | 0.000000 | 0.000000 |
| C Max / 243 | 0.676869 | 0.000000 | 0.000000 | 0.000000 | 0.000000 | 0.000000 |
| C Max / 81 | 0.121786 | 0.000000 | 0.000000 | 0.000000 | 0.000000 | 0.000000 |
| C Max / 27 | 0.019697 | 0.000000 | 0.000000 | 0.000001 | 0.000000 | 0.000000 |
| C Max / 9 | 0.001408 | 0.000000 | 0.000000 | 0.000000 | 0.000000 | 0.000000 |
| C Max / 3 | 0.000279 | 0.000000 | 0.000000 | 0.000000 | 0.000000 | 0.000000 |
| C Max | 0.000001 | 0.000000 | 0.000000 | 0.000000 | 0.000000 | 0.000000 |
| | epirubicin | | | | | |
| | CaCO2 | HCT 116 | HT29 | SW48 | SW480 | SW620 |
| C Max / 59 049 | 0.878195 | 0.214789 | 0.607786 | 0.072010 | 0.006276 | 0.000004 |
| C Max / 19 683 | 0.946534 | 0.242493 | 0.061231 | 0.005525 | 0.000007 | 0.000000 |
| C Max / 6561 | 0.379920 | 0.266857 | 0.003066 | 0.000000 | 0.000000 | 0.000000 |
| C Max / 2187 | 0.171299 | 0.000166 | 0.000032 | 0.000000 | 0.000000 | 0.000000 |
| C Max / 729 | 0.013034 | 0.000000 | 0.000000 | 0.000000 | 0.000000 | 0.000000 |
| C Max / 243 | 0.000259 | 0.000000 | 0.000000 | 0.000000 | 0.000000 | 0.000000 |
| C Max / 81 | 0.000010 | 0.000000 | 0.000000 | 0.000000 | 0.000000 | 0.000000 |
| C Max / 27 | 0.000000 | 0.000000 | 0.000000 | 0.000000 | 0.000000 | 0.000000 |
| C Max / 9 | 0.000000 | 0.000000 | 0.000000 | 0.000000 | 0.000000 | 0.000000 |
| C Max / 3 | 0.000000 | 0.000000 | 0.000000 | 0.000000 | 0.000000 | 0.000000 |
| C Max | 0.000000 | 0.000000 | 0.000000 | 0.000000 | 0.000000 | 0.000000 |
| | idarubicin | | | | | |
| | CaCO2 | HCT 116 | HT29 | SW48 | SW480 | SW620 |
| C Max / 59 049 | 0.720627 | 0.000000 | 0.529328 | 0.002716 | 0.732430 | 0.047629 |
| C Max / 19 683 | 0.285238 | 0.000000 | 0.056943 | 0.001411 | 0.984214 | 0.000000 |
| C Max / 6561 | 0.002090 | 0.000000 | 0.000734 | 0.000502 | 0.680906 | 0.000000 |
| C Max / 2187 | 0.000000 | 0.000000 | 0.000083 | 0.000012 | 0.034879 | 0.000000 |
| C Max / 729 | 0.000000 | 0.000000 | 0.000073 | 0.000020 | 0.012891 | 0.000000 |
| C Max / 243 | 0.000000 | 0.000000 | 0.007693 | 0.000042 | 0.189255 | 0.000000 |
| C Max / 81 | 0.000000 | 0.000000 | 0.001307 | 0.000212 | 0.080015 | 0.000000 |
| C Max / 27 | 0.000000 | 0.000000 | 0.000017 | 0.000008 | 0.008365 | 0.000000 |
| C Max / 9 | 0.000000 | 0.000000 | 0.000012 | 0.000006 | 0.005906 | 0.000000 |
| C Max / 3 | 0.000000 | 0.000000 | 0.000018 | 0.000005 | 0.007215 | 0.000000 |
| C Max | 0.000000 | 0.000000 | 0.000015 | 0.000113 | 0.010214 | 0.000000 |
| | 5-FU | | | | | |
| | CaCO2 | HCT 116 | HT29 | SW48 | SW480 | SW620 |
| C Max / 59 049 | 0.588898 | 0.955069 | 0.033774 | 0.206785 | 0.542621 | 0.959883 |
| C Max / 19 683 | 0.674734 | 0.993181 | 0.000009 | 0.066833 | 0.110778 | 0.000021 |
| C Max / 6561 | 0.143048 | 0.970795 | 0.000000 | 0.000010 | 0.000056 | 0.000012 |
| C Max / 2187 | 0.007930 | 0.530379 | 0.000000 | 0.000000 | 0.000000 | 0.000001 |

| | | | | | | |
|--------------------|--------------|----------------|-------------|-------------|--------------|--------------|
| C Max / 729 | 0.000724 | 0.188069 | 0.000000 | 0.000000 | 0.000000 | 0.000000 |
| C Max / 243 | 0.000027 | 0.454271 | 0.000000 | 0.000000 | 0.000000 | 0.000000 |
| C Max / 81 | 0.000001 | 0.165215 | 0.000000 | 0.000000 | 0.000000 | 0.000000 |
| C Max / 27 | 0.000000 | 0.014706 | 0.000000 | 0.000000 | 0.000000 | 0.000000 |
| C Max / 9 | 0.000000 | 0.000764 | 0.000000 | 0.000000 | 0.000000 | 0.000000 |
| C Max / 3 | 0.000000 | 0.000064 | 0.000000 | 0.000000 | 0.000000 | 0.000000 |
| C Max | 0.000000 | 0.000000 | 0.000000 | 0.000000 | 0.000000 | 0.000000 |
| raltitrexed | | | | | | |
| | CaCO2 | HCT 116 | HT29 | SW48 | SW480 | SW620 |
| C Max / 59 049 | 0.104017 | 0.999016 | 0.829700 | 0.911253 | 0.856710 | 0.361116 |
| C Max / 19 683 | 0.107258 | 0.816367 | 0.878751 | 0.985889 | 0.893396 | 0.075492 |
| C Max / 6561 | 0.541102 | 0.888802 | 0.800379 | 0.110970 | 0.702164 | 0.002447 |
| C Max / 2187 | 0.369618 | 0.820971 | 0.346700 | 0.000476 | 0.184678 | 0.000165 |
| C Max / 729 | 0.972874 | 0.402383 | 0.205667 | 0.000130 | 0.080757 | 0.000055 |
| C Max / 243 | 0.250864 | 0.392428 | 0.161153 | 0.002552 | 0.153314 | 0.000001 |
| C Max / 81 | 0.855081 | 0.177644 | 0.165215 | 0.000342 | 0.066727 | 0.000001 |
| C Max / 27 | 0.701725 | 0.009413 | 0.092201 | 0.000141 | 0.040921 | 0.000000 |
| C Max / 9 | 0.318693 | 0.004038 | 0.220232 | 0.000135 | 0.030790 | 0.000000 |
| C Max / 3 | 0.005422 | 0.000626 | 0.236073 | 0.000083 | 0.012613 | 0.000000 |
| C Max | 0.000000 | 0.000000 | 0.000698 | 0.000005 | 0.000762 | 0.000000 |
| gemcitabine | | | | | | |
| | CaCO2 | HCT 116 | HT29 | SW48 | SW480 | SW620 |
| C Max / 59 049 | 0.065324 | 0.012074 | 0.052981 | 0.000022 | 0.010950 | 0.00 |
| C Max / 19 683 | 0.312947 | 0.005948 | 0.068738 | 0.000010 | 0.043549 | 0.00 |
| C Max / 6561 | 0.511429 | 0.006540 | 0.049740 | 0.000005 | 0.015645 | 0.00 |
| C Max / 2187 | 0.333330 | 0.000842 | 0.046894 | 0.000001 | 0.001154 | 0.00 |
| C Max / 729 | 0.209661 | 0.000066 | 0.024041 | 0.000001 | 0.000807 | 0.00 |
| C Max / 243 | 0.086645 | 0.000037 | 0.020372 | 0.000000 | 0.000644 | 0.00 |
| C Max / 81 | 0.070336 | 0.000010 | 0.020149 | 0.000000 | 0.000445 | 0.00 |
| C Max / 27 | 0.042973 | 0.000006 | 0.021192 | 0.000000 | 0.000329 | 0.00 |
| C Max / 9 | 0.007329 | 0.000002 | 0.013916 | 0.000000 | 0.000141 | 0.00 |
| C Max / 3 | 0.000000 | 0.000000 | 0.000146 | 0.000000 | 0.000012 | 0.00 |
| C Max | 0.000000 | 0.000000 | 0.000054 | 0.000000 | 0.000013 | 0.00 |
| cisplatin | | | | | | |
| | CaCO2 | HCT 116 | HT29 | SW48 | SW480 | SW620 |
| C Max / 59 049 | 0.909528 | 0.915765 | 0.979775 | 0.817637 | 0.150723 | 0.867400 |
| C Max / 19 683 | 0.845843 | 0.823523 | 0.912750 | 0.419344 | 0.288074 | 0.808878 |
| C Max / 6561 | 0.997337 | 0.981214 | 0.538824 | 0.294622 | 0.613341 | 0.139744 |
| C Max / 2187 | 0.769288 | 0.753844 | 0.629160 | 0.112114 | 0.103623 | 0.163361 |
| C Max / 729 | 0.772946 | 0.781347 | 0.023687 | 0.461584 | 0.000645 | 0.095342 |
| C Max / 243 | 0.483939 | 0.482962 | 0.002191 | 0.004189 | 0.000012 | 0.000029 |
| C Max / 81 | 0.339277 | 0.387137 | 0.000000 | 0.000191 | 0.000000 | 0.000000 |
| C Max / 27 | 0.005131 | 0.000016 | 0.000000 | 0.000015 | 0.000000 | 0.000000 |
| C Max / 9 | 0.000049 | 0.000000 | 0.000000 | 0.000002 | 0.000000 | 0.000000 |
| C Max / 3 | 0.000003 | 0.000000 | 0.000000 | 0.000001 | 0.000000 | 0.000000 |
| C Max | 0.000000 | 0.000000 | 0.000000 | 0.000001 | 0.000000 | 0.000000 |
| oxaliplatin | | | | | | |
| | CaCO2 | HCT 116 | HT29 | SW48 | SW480 | SW620 |
| C Max / 59 049 | 0.762307 | 0.840433 | 0.674313 | 0.628147 | 0.665114 | 0.938514 |
| C Max / 19 683 | 0.814301 | 0.959414 | 0.603271 | 0.433616 | 0.996916 | 0.543320 |
| C Max / 6561 | 0.572786 | 0.928276 | 0.905187 | 0.315179 | 0.712286 | 0.267300 |
| C Max / 2187 | 0.255470 | 0.650532 | 0.013333 | 0.100569 | 0.558075 | 0.000033 |

| | | | | | | |
|---------------------|--------------|----------------|-------------|-------------|--------------|--------------|
| C Max / 729 | 0.067708 | 0.848791 | 0.002818 | 0.022747 | 0.001084 | 0.000000 |
| C Max / 243 | 0.001305 | 0.437154 | 0.000068 | 0.016278 | 0.004190 | 0.000000 |
| C Max / 81 | 0.000106 | 0.421409 | 0.000016 | 0.008482 | 0.000120 | 0.000000 |
| C Max / 27 | 0.000010 | 0.049870 | 0.000000 | 0.001596 | 0.000001 | 0.000000 |
| C Max / 9 | 0.000012 | 0.000129 | 0.000000 | 0.000773 | 0.000000 | 0.000000 |
| C Max / 3 | 0.000003 | 0.000000 | 0.000000 | 0.000598 | 0.000000 | 0.000000 |
| C Max | 0.000001 | 0.000000 | 0.000000 | 0.000293 | 0.000000 | 0.000000 |
| mitomycin c | | | | | | |
| | CaCO2 | HCT 116 | HT29 | SW48 | SW480 | SW620 |
| C Max / 59 049 | 0.691972 | 0.914507 | 0.710627 | 0.892610 | 0.501034 | 0.271583 |
| C Max / 19 683 | 0.940662 | 0.859913 | 0.715526 | 0.774722 | 0.307664 | 0.118708 |
| C Max / 6561 | 0.807983 | 0.803137 | 0.845628 | 0.047691 | 0.192476 | 0.002914 |
| C Max / 2187 | 0.999702 | 0.568554 | 0.421334 | 0.000894 | 0.063375 | 0.000203 |
| C Max / 729 | 0.758469 | 0.131871 | 0.075168 | 0.000060 | 0.001519 | 0.000000 |
| C Max / 243 | 0.700307 | 0.000487 | 0.001491 | 0.000001 | 0.000027 | 0.000000 |
| C Max / 81 | 0.172426 | 0.000000 | 0.000080 | 0.000000 | 0.000001 | 0.000000 |
| C Max / 27 | 0.000675 | 0.000000 | 0.000007 | 0.000000 | 0.000000 | 0.000000 |
| C Max / 9 | 0.000001 | 0.000000 | 0.000003 | 0.000000 | 0.000000 | 0.000000 |
| C Max / 3 | 0.000000 | 0.000000 | 0.000003 | 0.000000 | 0.000000 | 0.000000 |
| C Max | 0.000000 | 0.000000 | 0.000001 | 0.000000 | 0.000000 | 0.000000 |
| irinotecan | | | | | | |
| | CaCO2 | HCT 116 | HT29 | SW48 | SW480 | SW620 |
| C Max / 59 049 | 0.531639 | 0.798530 | 0.389022 | 0.498134 | 0.853986 | 0.970194 |
| C Max / 19 683 | 0.817954 | 0.733610 | 0.923159 | 0.452620 | 0.226172 | 0.072380 |
| C Max / 6561 | 0.873064 | 0.947787 | 0.221012 | 0.072979 | 0.460960 | 0.637463 |
| C Max / 2187 | 0.659807 | 0.549807 | 0.229030 | 0.004467 | 0.043006 | 0.383565 |
| C Max / 729 | 0.882144 | 0.155519 | 0.023224 | 0.000683 | 0.006200 | 0.127432 |
| C Max / 243 | 0.429677 | 0.001119 | 0.001581 | 0.000064 | 0.000167 | 0.003251 |
| C Max / 81 | 0.138901 | 0.000000 | 0.000323 | 0.000022 | 0.000035 | 0.001487 |
| C Max / 27 | 0.003098 | 0.000000 | 0.000000 | 0.000002 | 0.000004 | 0.000020 |
| C Max / 9 | 0.000001 | 0.000000 | 0.000000 | 0.000001 | 0.000000 | 0.000001 |
| C Max / 3 | 0.000001 | 0.000000 | 0.000000 | 0.000000 | 0.000000 | 0.000001 |
| C Max | 0.000001 | 0.000000 | 0.000000 | 0.000000 | 0.000000 | 0.000000 |
| streptozocin | | | | | | |
| | CaCO2 | HCT 116 | HT29 | SW48 | SW480 | SW620 |
| C Max / 59 049 | 0.901238 | 0.971391 | 0.421162 | 0.884789 | 0.698013 | 0.843329 |
| C Max / 19 683 | 0.965997 | 0.915907 | 0.629827 | 0.450871 | 0.840989 | 0.538511 |
| C Max / 6561 | 0.365445 | 0.699865 | 0.923509 | 0.787214 | 0.945067 | 0.427658 |
| C Max / 2187 | 0.819338 | 0.878870 | 0.656708 | 0.710166 | 0.684365 | 0.004309 |
| C Max / 729 | 0.368347 | 0.797660 | 0.890968 | 0.350626 | 0.201647 | 0.000052 |
| C Max / 243 | 0.274797 | 0.214547 | 0.255011 | 0.101211 | 0.318057 | 0.000000 |
| C Max / 81 | 0.115040 | 0.054057 | 0.144423 | 0.001843 | 0.056790 | 0.000001 |
| C Max / 27 | 0.046604 | 0.003801 | 0.000978 | 0.000290 | 0.008125 | 0.000000 |
| C Max / 9 | 0.002518 | 0.000253 | 0.000034 | 0.000013 | 0.005607 | 0.000000 |
| C Max / 3 | 0.000000 | 0.000000 | 0.000000 | 0.000000 | 0.000000 | 0.000000 |
| C Max | 0.000000 | 0.000000 | 0.000000 | 0.000000 | 0.000000 | 0.000000 |
| paclitaxel | | | | | | |
| | CaCO2 | HCT 116 | HT29 | SW48 | SW480 | SW620 |
| C Max / 59 049 | 0.565191 | 0.009566 | 0.408540 | 0.859325 | 0.722051 | 0.534921 |
| C Max / 19 683 | 0.364147 | 0.014782 | 0.907698 | 0.137379 | 0.928796 | 0.279793 |
| C Max / 6561 | 0.083295 | 0.003726 | 0.911025 | 0.113074 | 0.915083 | 0.619407 |
| C Max / 2187 | 0.020097 | 0.016540 | 0.251538 | 0.148185 | 0.844731 | 0.647216 |

| | | | | | | |
|-------------|----------|----------|----------|----------|----------|----------|
| C Max / 729 | 0.097149 | 0.042329 | 0.145584 | 0.939745 | 0.360457 | 0.942764 |
| C Max / 243 | 0.034851 | 0.003338 | 0.357841 | 0.786418 | 0.019519 | 0.512017 |
| C Max / 81 | 0.008287 | 0.000274 | 0.198257 | 0.411041 | 0.520269 | 0.097827 |
| C Max / 27 | 0.000000 | 0.000001 | 0.036192 | 0.015631 | 0.294273 | 0.000823 |
| C Max / 9 | 0.000000 | 0.000000 | 0.000486 | 0.012531 | 0.155020 | 0.001005 |
| C Max / 3 | 0.000000 | 0.000000 | 0.000176 | 0.103943 | 0.130981 | 0.000127 |
| C Max | 0.000000 | 0.000000 | 0.000071 | 0.111858 | 0.082116 | 0.000067 |