

112 egg-batches => 102 with EMSB electrophoregrams



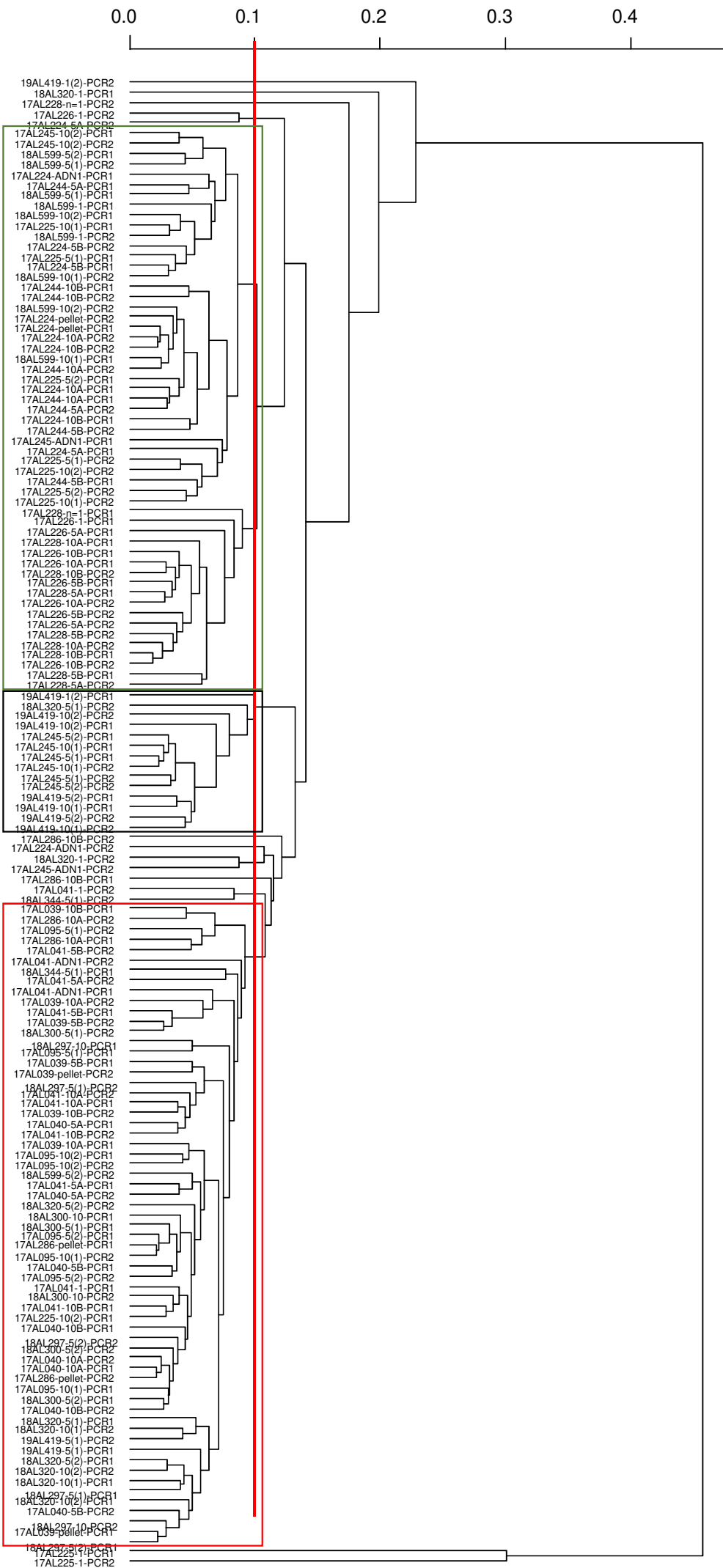
(b)

Pearson correlation coefficient = $r > 0.75$ – 73 egg-batches

G2

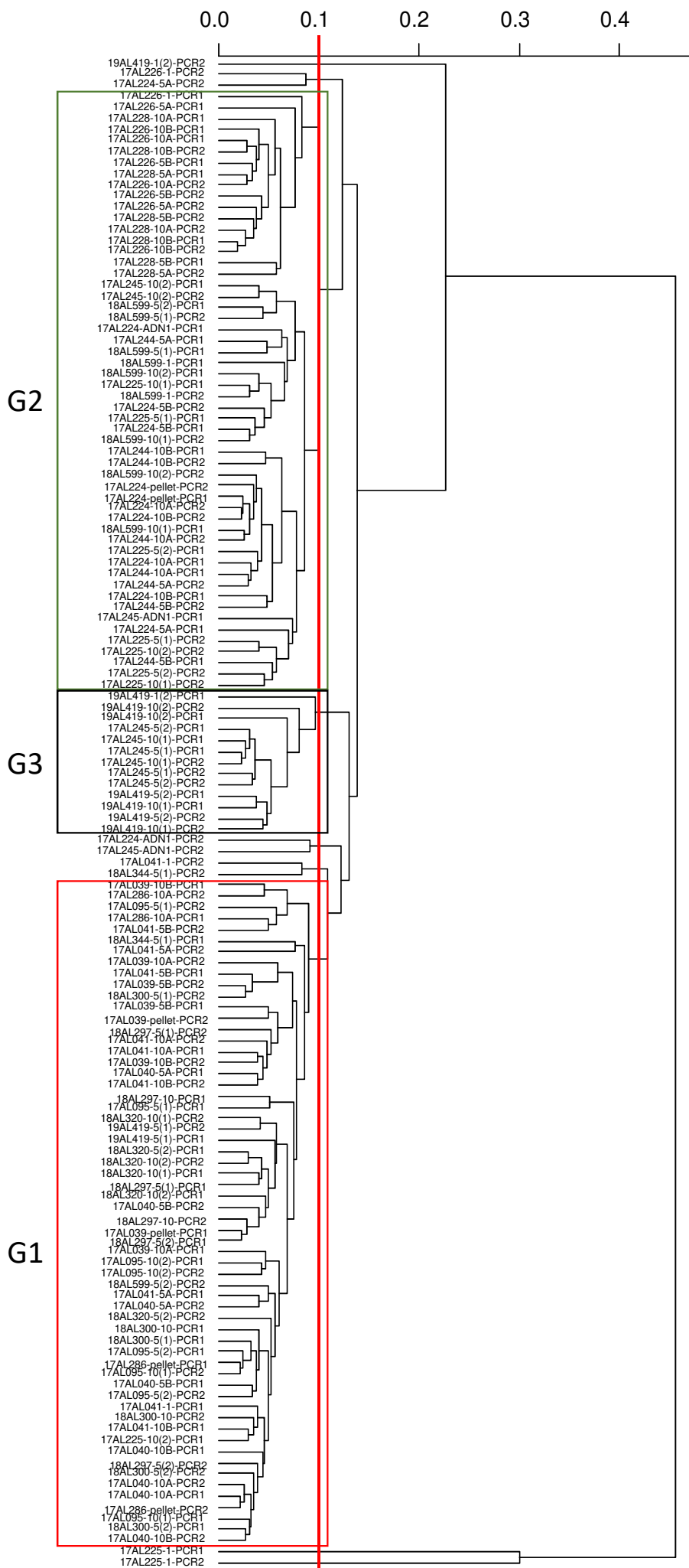
G3

G1



(c)

Pearson correlation coefficient = $r > 0.8$ – 68 egg-batches



(d)

Pearson correlation coefficient = $r > 0.9$ – 49 egg-batches

