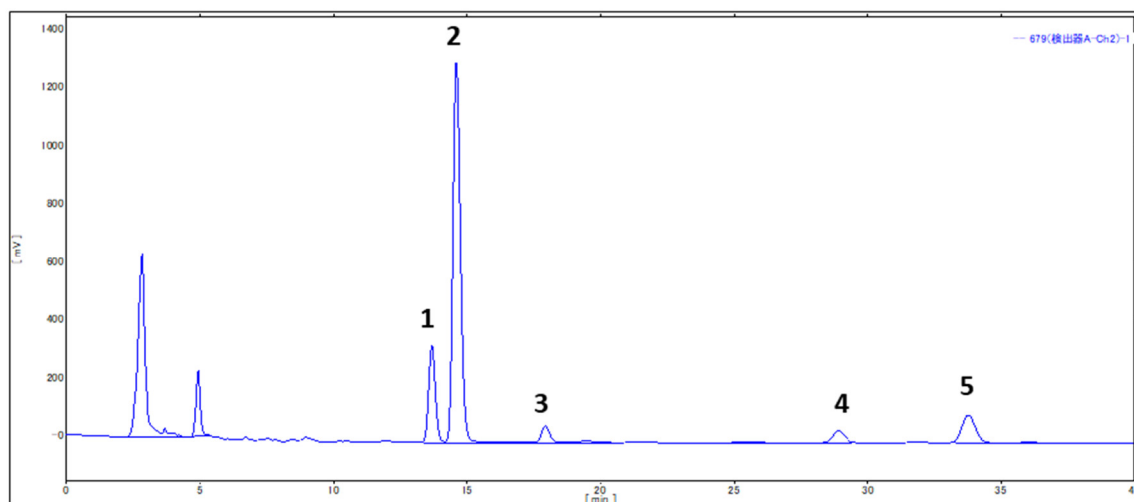


Supplemental Figure S1. HPLC profile of compounds contained in CLE



The peak number corresponds to the compound identified in the authentic sample. **1:** isomahanine, **2:** mahanine, **3:** murrayanol, **4:** mahanimbicine, **5:** mahanimbine. HPLC profiling was analyzed on a SIMADZU LC-10AD pump, SIMADZU SPD-10A detector, SIMADZU CTO-10AC column heater, and column of COSMOSIL 5C₁₈ AR-II (5μm, φ4.6×250 mm, Nacalai Tasque Inc., Kyoto, Japan); Flow rate, 1.0 mL/min.; column temperature, 40 °C; Detection wavelength, 254 nm; Eluting solvent, 80% MeOH in 0.1% trifluoroacetic acid. The curry leaf extract was dissolved in EtOH at 2.56 mg/mL concentration and injected to the HPLC system (5 μL).