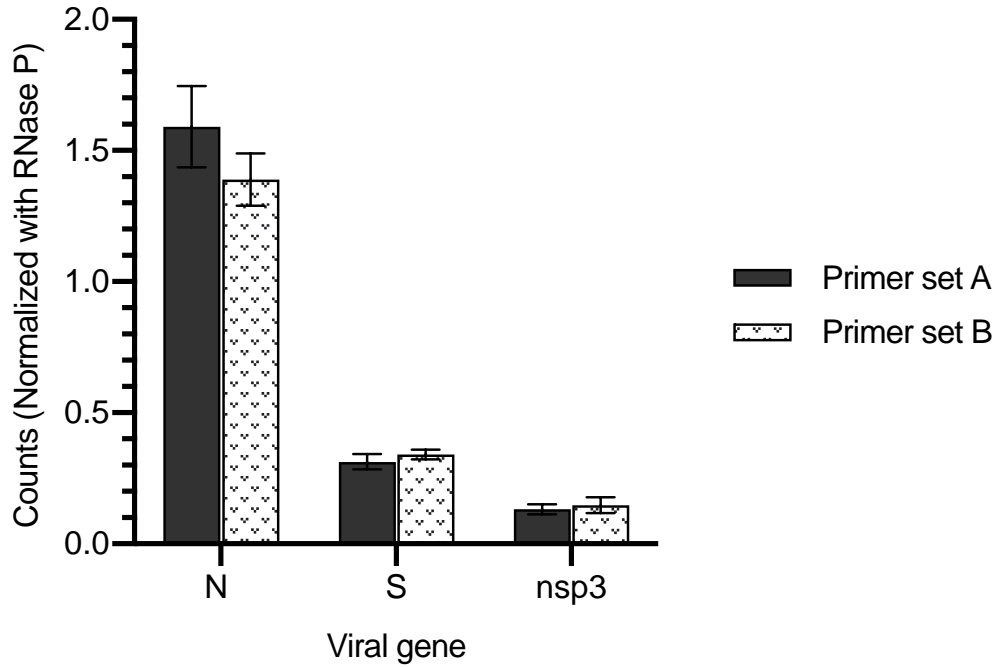


### Supplementary Figure

Comparison of the results between 2 sets of primers and probe



**Figure S1. Primers and probes that designed on different conserve regions show no difference of results by ddPCR.** Additional 3 sets of oligos and probes (labelled as set B) that target to different conserve regions of S, N and NSP3 were designed and used for ddPCR to compare the amplification efficiency. Human Caco-2 cells were infected by the SARS-CoV-2 at a moi of 0.01 and the total RNA was collected at 12 hours after infection. #:P>0.05.