

Table S1. Cytopathogenic effects

MP-12

	<i>MaKo</i>	<i>TH-1</i>	<i>IgH-2</i>	<i>A6</i>	<i>SKM</i>	<i>VH-2</i>	<i>Vero76</i>	<i>CDSK</i>
<i>6 hpi</i>	-	-	-	-	-	-	-	-
<i>12 hpi</i>	-	-	-	-	-	-	-	-
<i>24 hpi</i>	-	-	-	-	-	-	-	-
<i>48 hpi</i>	-	-	+	+	-	-	+	-
<i>72 hpi</i>	+	+	+	+	-	+	+	-

Clone 13

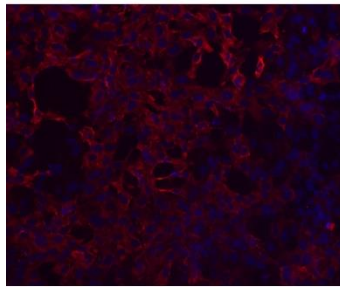
	<i>MaKo</i>	<i>TH-1</i>	<i>IgH-2</i>	<i>A6</i>	<i>SKM</i>	<i>VH-2</i>	<i>BHK-21</i>	<i>CDSK</i>
<i>6 hpi</i>	-	-	-	-	-	-	-	-
<i>12 hpi</i>	-	-	-	-	-	-	-	-
<i>24 hpi</i>	-	-	-	-	-	-	-	-
<i>48 hpi</i>	-	-	-	-	-	-	-	-
<i>72 hpi</i>	-	+	-	-	-	-	+	-

ZH501

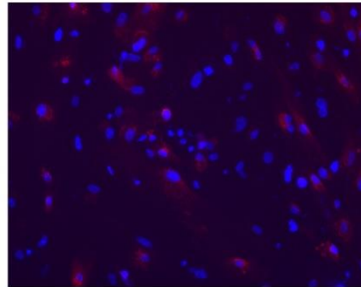
	<i>MaKo</i>	<i>TH-1</i>	<i>IgH-2</i>	<i>A6</i>	<i>SKM</i>	<i>VH-2</i>	<i>VeroE6</i>	<i>CDSK</i>
<i>6 hpi</i>	-	-	-	-	-	-	-	-
<i>12 hpi</i>	-	-	-	-	-	-	-	-
<i>24 hpi</i>	-	-	-	-	-	-	-	-
<i>48 hpi</i>	-	+	+	-	-	-	+	+
<i>72 hpi</i>	-	+	+	-	-	+	+	+

Cytopathogenic effects were evaluated at the according time points after infection before petri dishes were frozen. Infected cells were compared to corresponding mock-infected cells, that were treated and kept in the same way like infected cells.

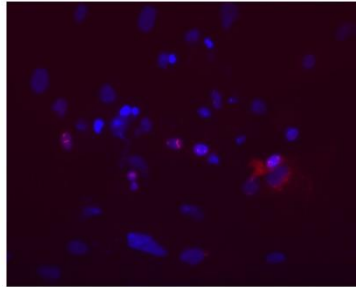
Figure S1. Immunofluorescence assay



Cell: TH-1
Infected with Clone 13
72 hpi
anti-NP staining



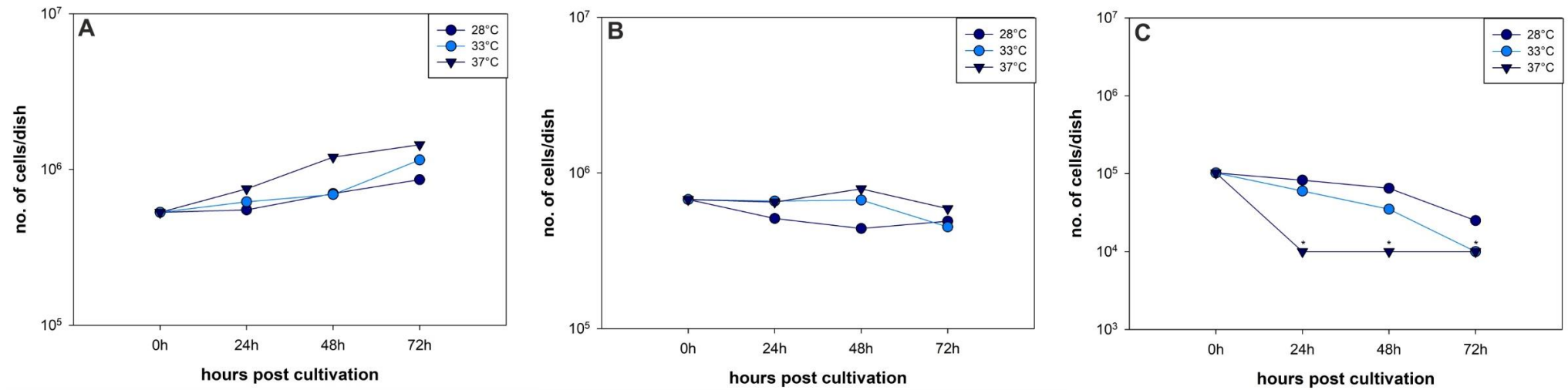
Cell: MaKo
Infected with MP-12
72 hpi
anti-Gn staining



Cell: MaKo
Infected with MP-12
72 hpi
anti-NSs staining

Images of RVFV immunofluorescence assay are depicted for two different cell lines and staining for three different antigens. Cells are depicted at a 100x magnitude.

Figure S2. Temperature dependent growth of cell lines Vero76, IgH-2 and A6



Number of cells per dish at different time points after cultivation and at different temperatures of incubation are presented for Vero76 (A), IgH-2 (B) and A6 (C).

* number of cells $\leq 10^4$ cells/dish (limit of countable cells).