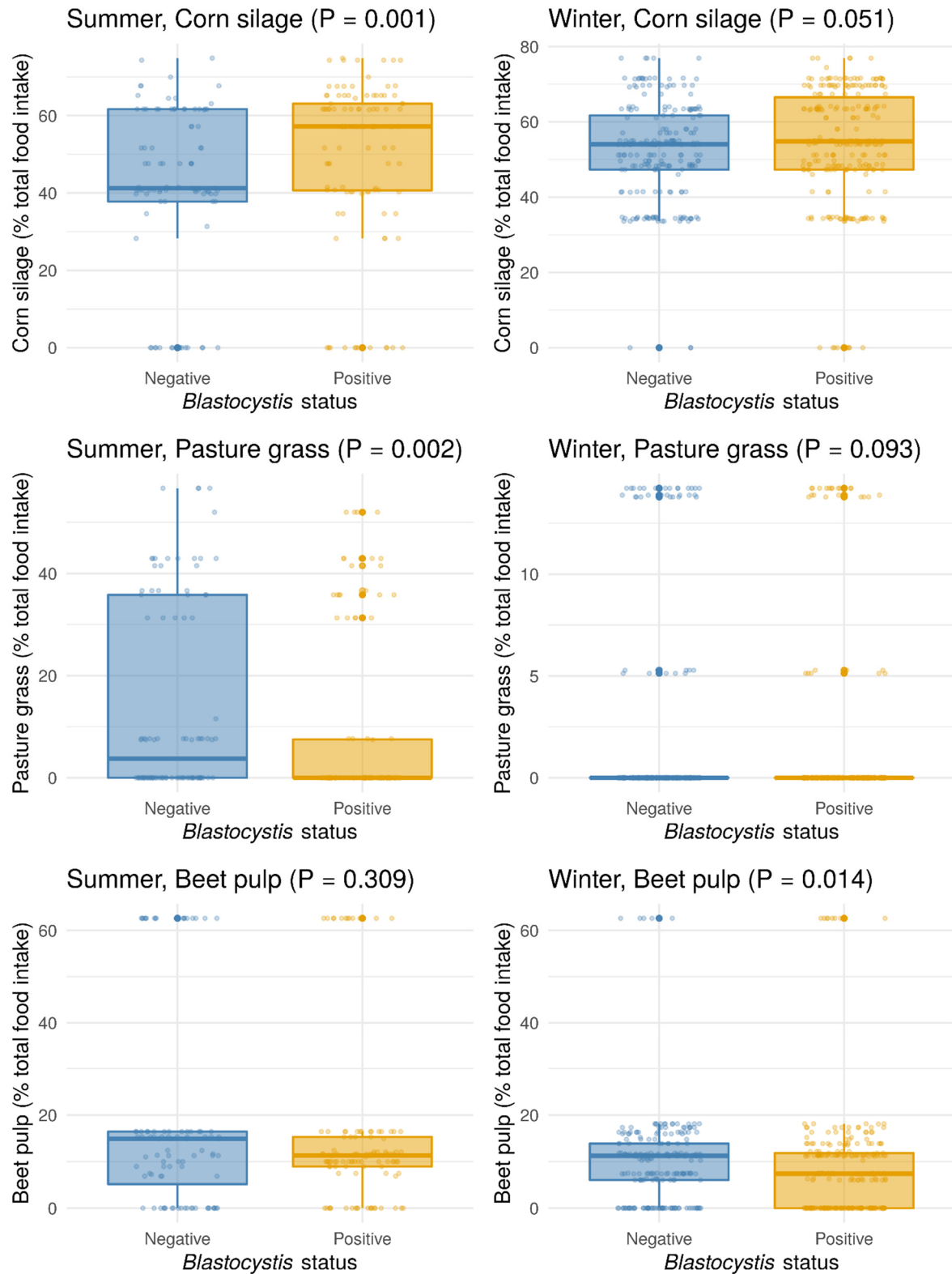


**Figure S1.** *Blastocystis* sp. prevalence according to the two sampling seasons. Pearson's Chi-squared test with Yates' continuity correction,  $p = 0.0003572$ .



**Figure S2.** Corn silage, pasture grass and beet pulp effects on *Blastocystis* sp. prevalence in summer or winter (Wilcoxon test). Each food item value has been transformed into the percentage of total food intake.