

Supplementary Materials: Metabolic Profile and Quantification of Terpene Trilactones and Flavonoids in *Ginkgo biloba* L. Buds Depending on Physiological Stages

Dominique Laurain-Mattar ^{1,2,*,+}, Sahar Saliba ², Joseph Mattar ³, Afra Khiralla ⁴, Rosella Spina ^{1,2} and Dominique Decolin ⁵

¹ Université de Lorraine—INRAE, LAE, F-54000 Nancy, France

² Université de Lorraine—CNRS, L2CM, F-54000 Nancy, France

³ CRICES Centre de recherche de l'ICES, Institut Catholique de Vendée, 17 Boulevard des Belges, F-85017 La Roche-sur-Yon, France

⁴ Botany Department, Faculty of Sciences and Technologies, Shendi University, Shendi P.O. Box 142, Sudan

⁵ Faculté de Pharmacie, Université de Lorraine, Campus Brabois-Santé, 7 Avenue de la Forêt de Haye, BP 90170, F-54505 Vandoeuvre-lès-Nancy, France

* Correspondence: dominique.mattar@univ-lorraine.fr

+ Current address: Université de Lorraine, Laboratoire LAE_UMR1121, F-54506 Vandoeuvre-lès-Nancy, France.

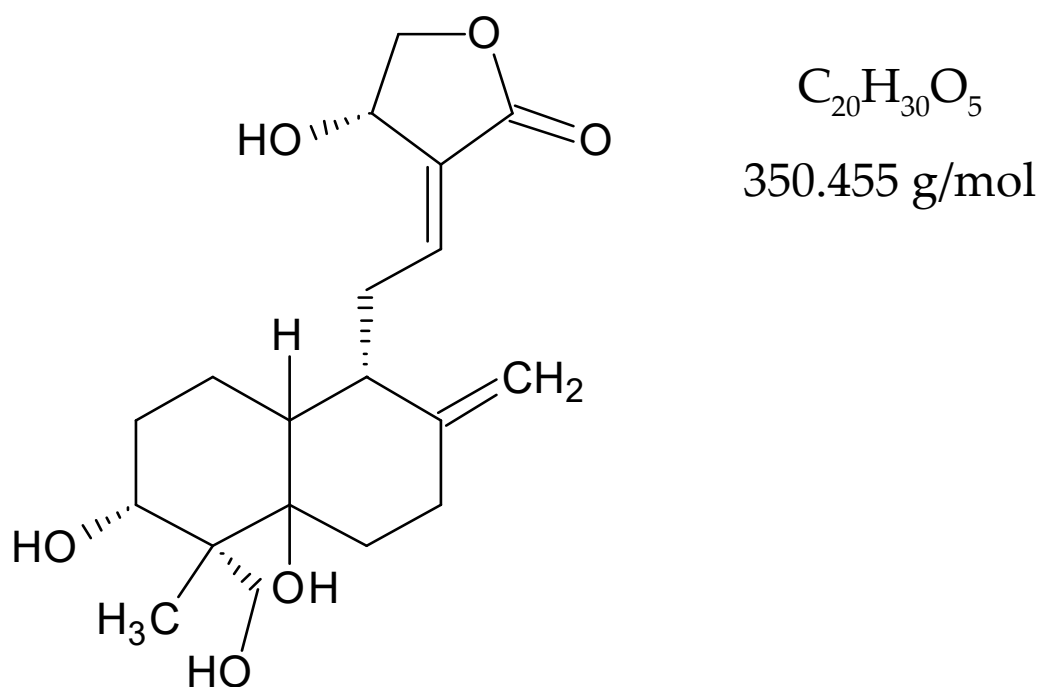


Figure S1. Chemical structure of andrographolide.

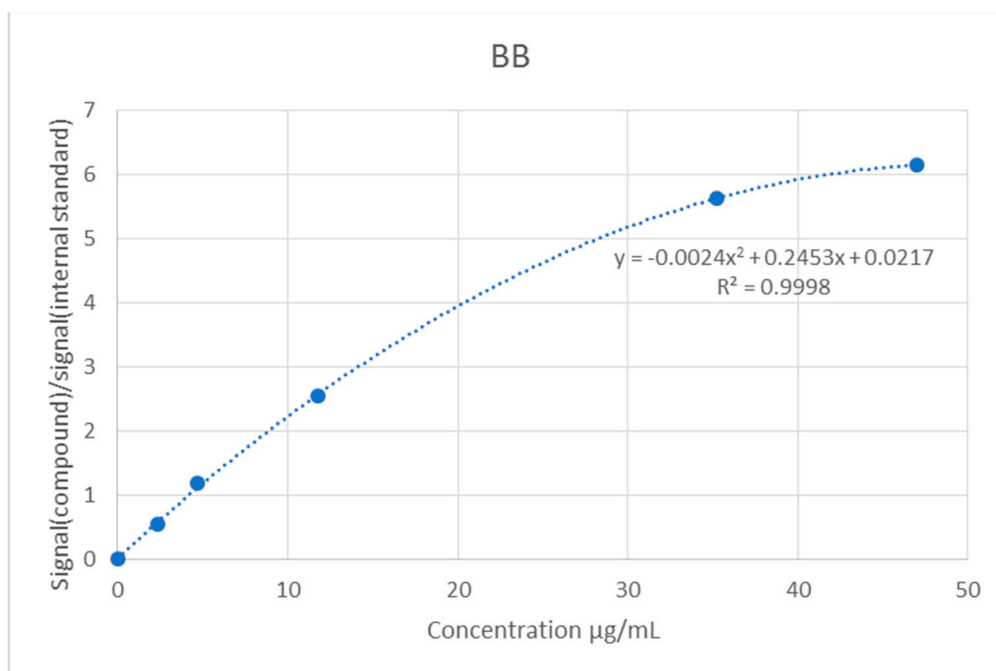


Figure S2. Calibration curve for Bilobalide (BB) quantification.

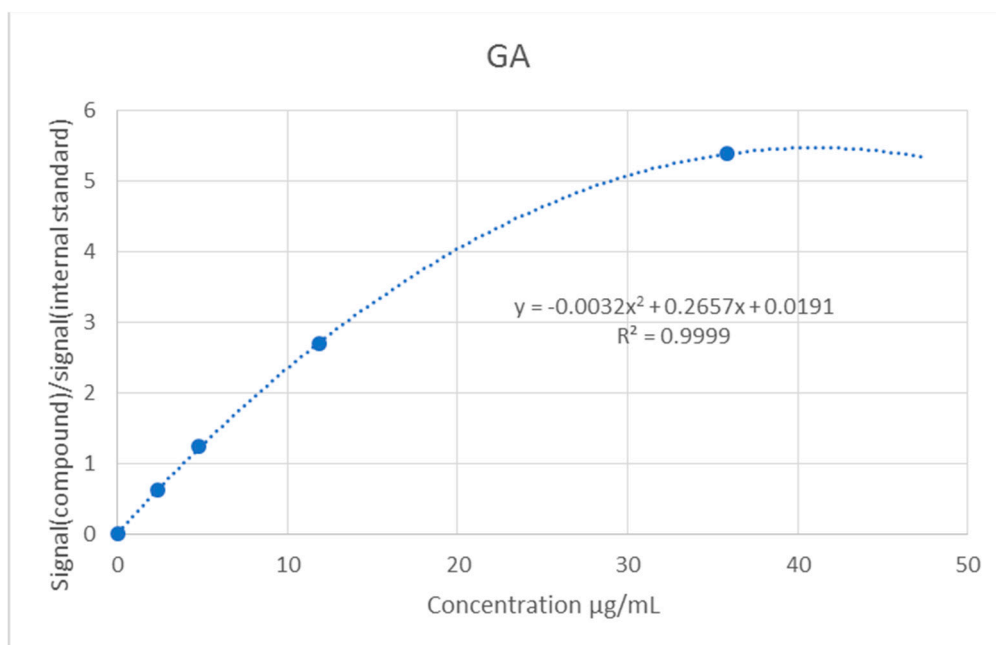


Figure S3. Calibration curve for Ginkgolide A (GA) quantification.

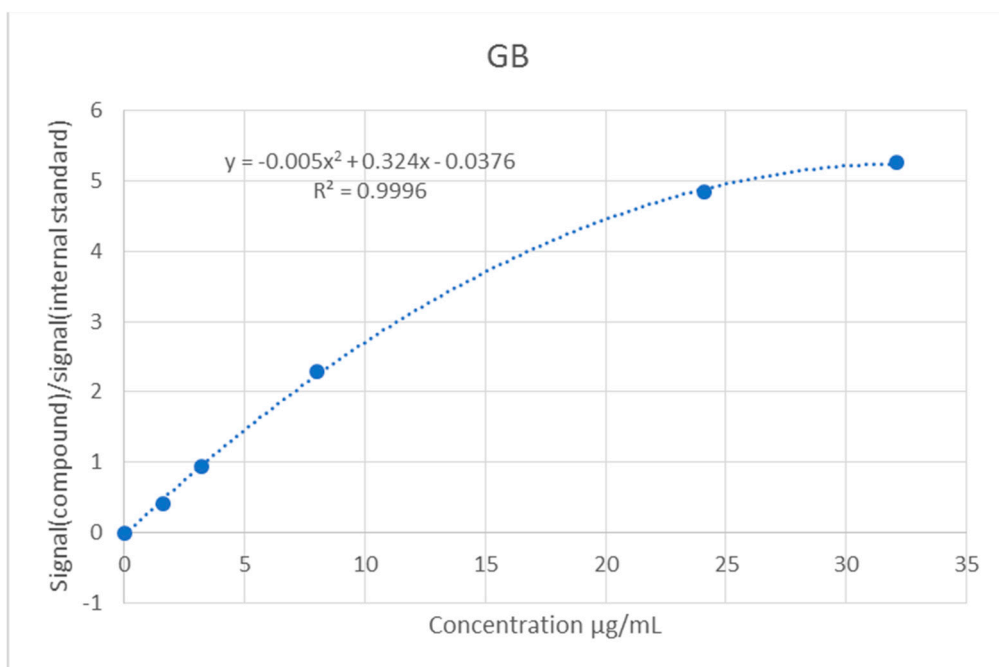


Figure S4. Calibration curve for Ginkgolide B (GB) quantification.

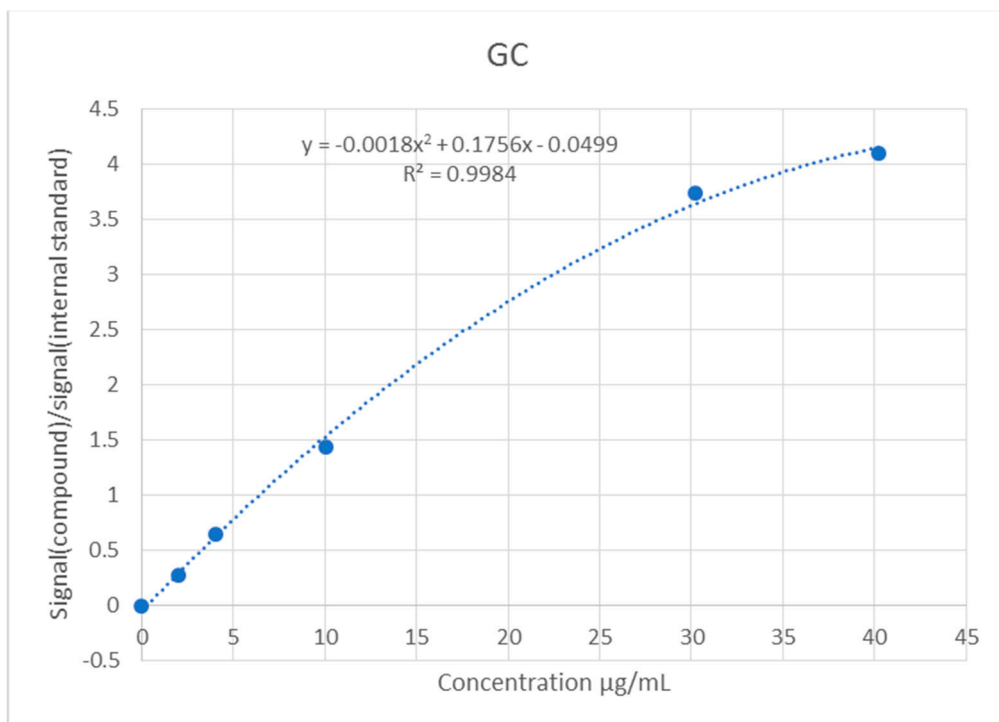


Figure S5. Calibration curve for Ginkgolide C (GC) quantification.

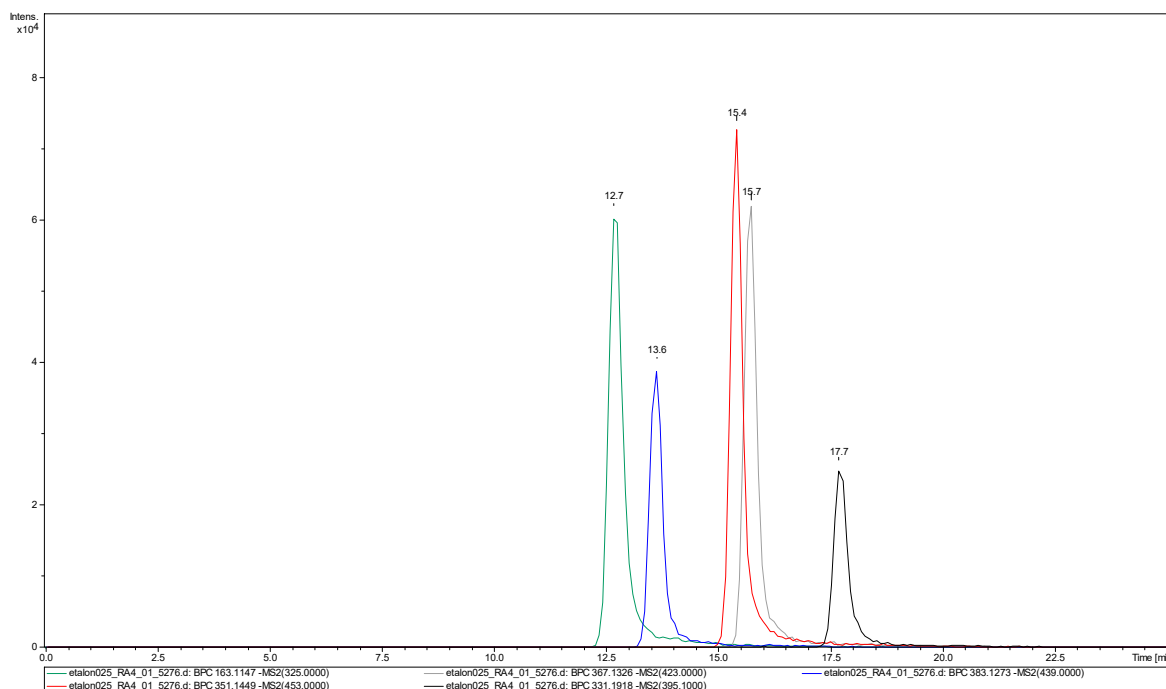


Figure S6. LC-HR-ESI-MS chromatogram for standards reference in a fortified mixture.

Bilobalide (12.7 min), ginkgolide C (13.6 min), ginkgolide A (15.4 min), ginkgolide B (15.7 min) and andrographolide (17.7 min).

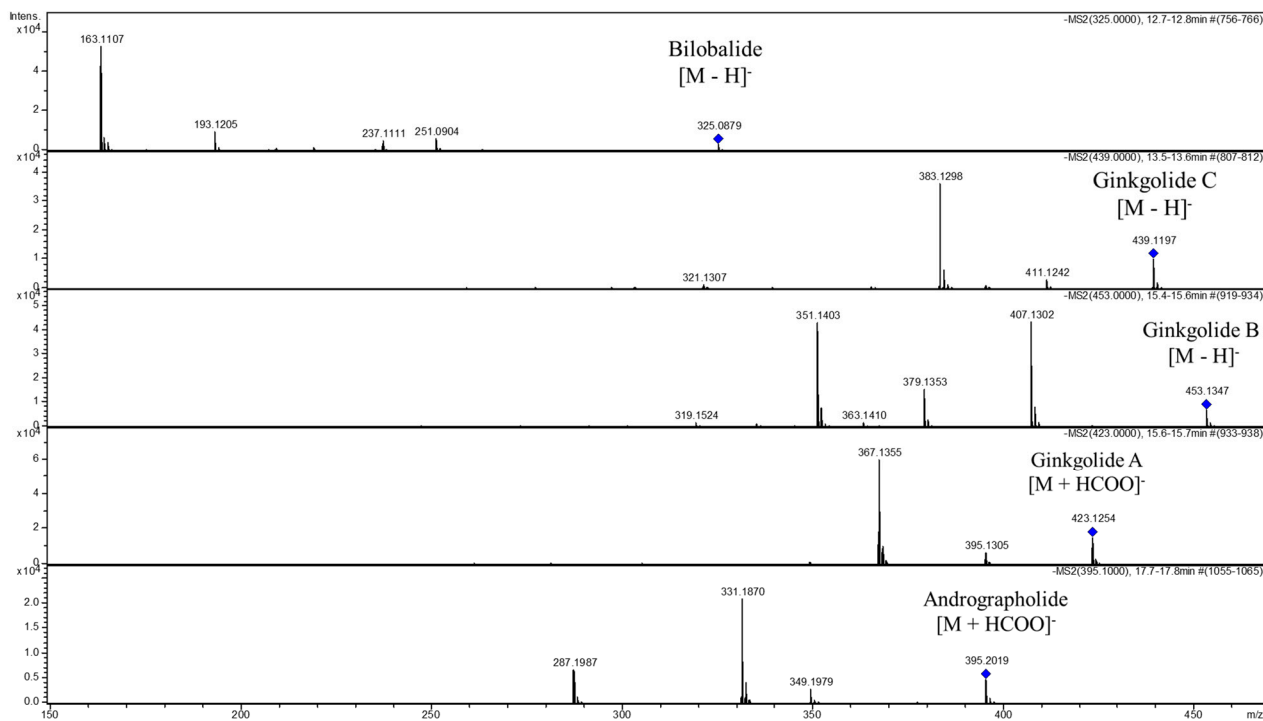


Figure S7. ESI-MS ionization patterns of terpene trilactones: bilobalide, ginkgolide A, ginkgolide B, ginkgolide C and a reference standard, andrographolide.