

Figure S1. Inhibitory effects of GBM migration and epithelial-mesenchymal transition by urolithins in ALTS1C1 GBM cells. (A, B) Cells were treated with urolithin A for 24 h. Migration ability was determined using a transwell assay and visualized using a microscope. (C, D) Vimentin, N-cadherin, and β-catenin protein expression levels were determined by Western blotting. Each bar represents the mean \pm standard error of the mean ($n = 3$) * $p < 0.05$ compared with the control group.

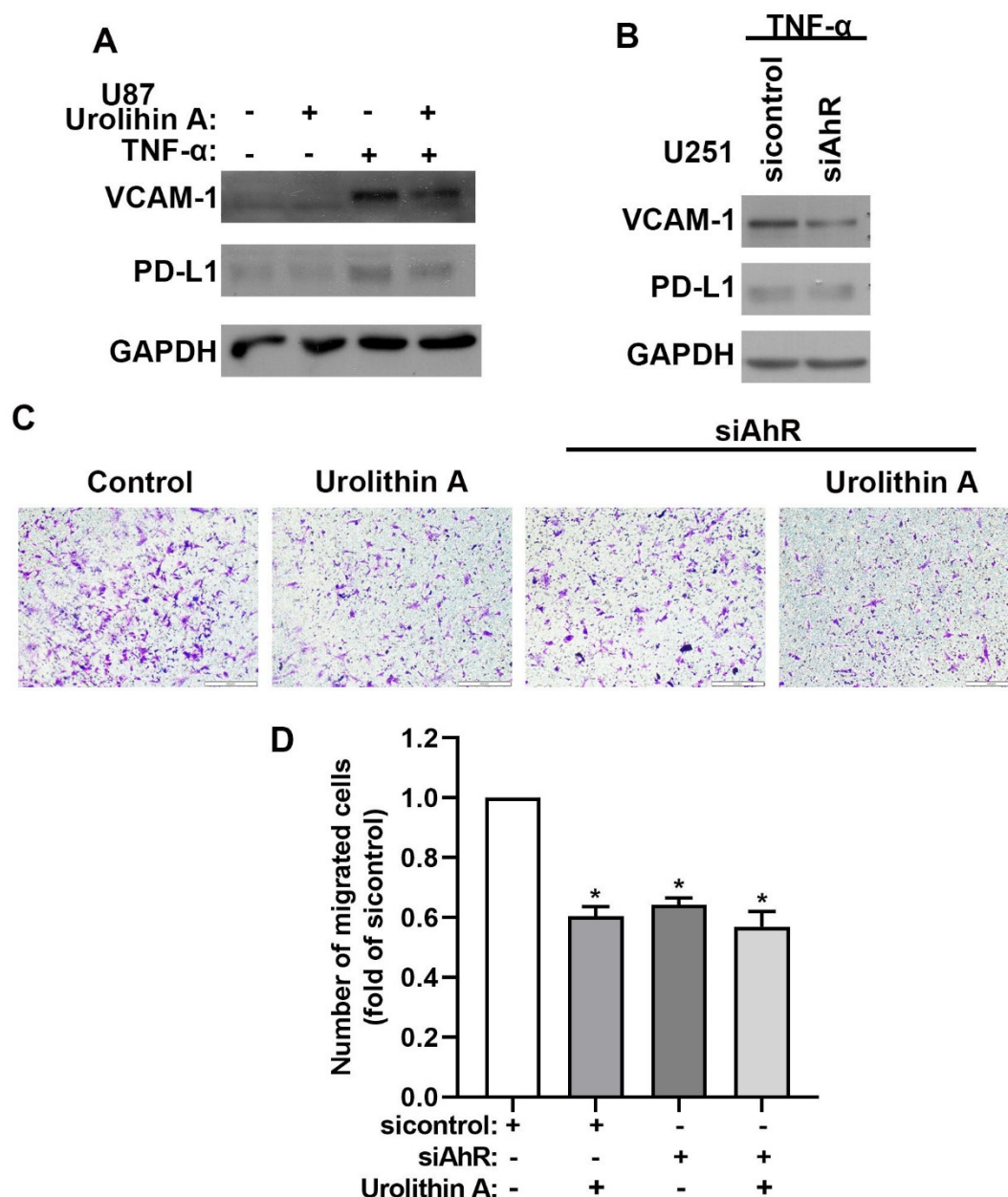


Figure S2. Knockdown of aryl hydrocarbon receptor downregulates the expression of VCAM-1 and PD-L1. (A) U87 human GBM cells were treated with urolithin A for 30 min and stimulated with TNF- α for another 24 h. (B) U251 human GBM cells were transfected with siRNA against AhR or control for 24 h and then stimulated with TNF- α for another 24 h. VCAM-1 and PD-L1 protein expression levels were determined using Western blotting. (C) U251 human GBM cells were transfected with AhR or control siRNA for 24 h and stimulated with urolithin A for another 24 h. Cell migration was detected by using transwell assay. Quantitative results are shown in (D). Each bar represents the mean \pm standard error of the mean ($n = 3$) $*p < 0.05$ compared with the sicontrol group.