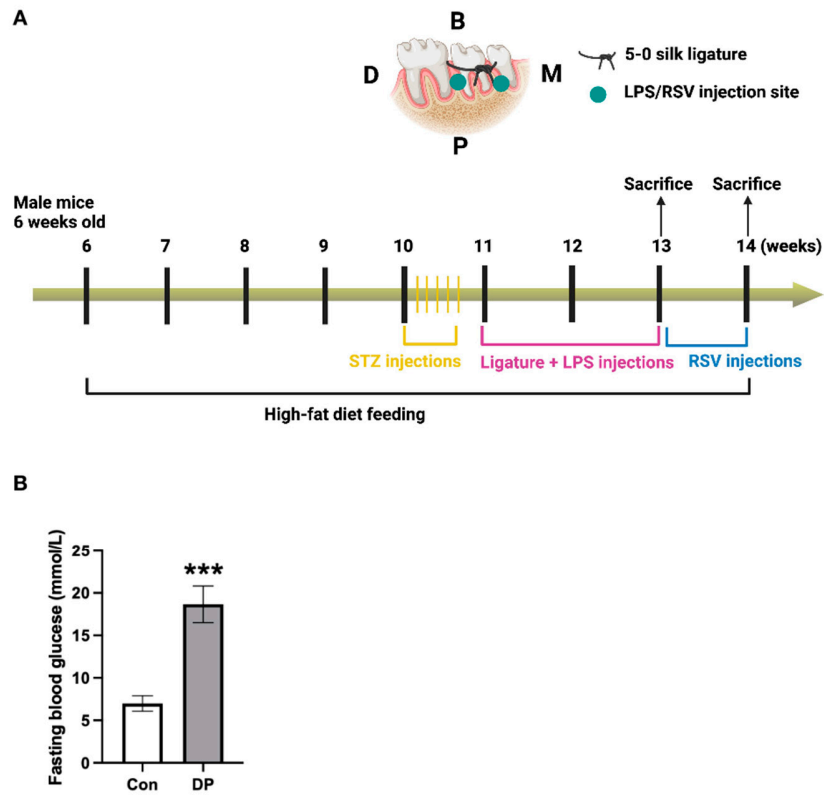
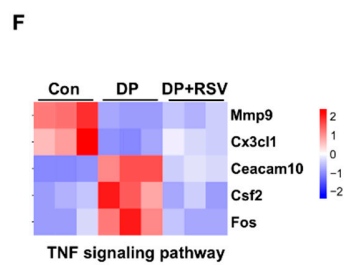
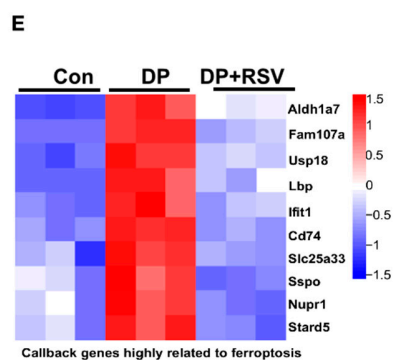
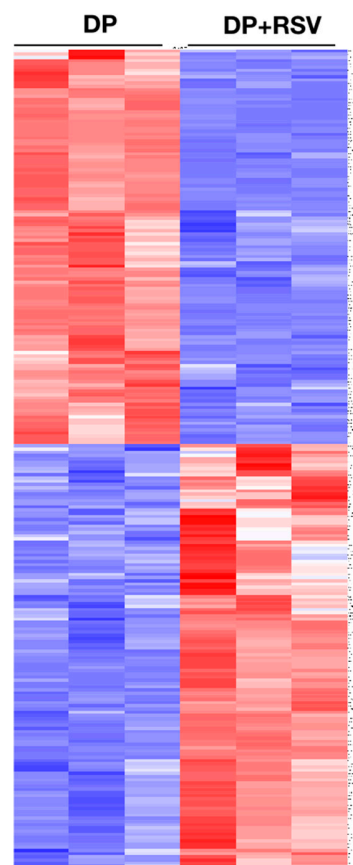
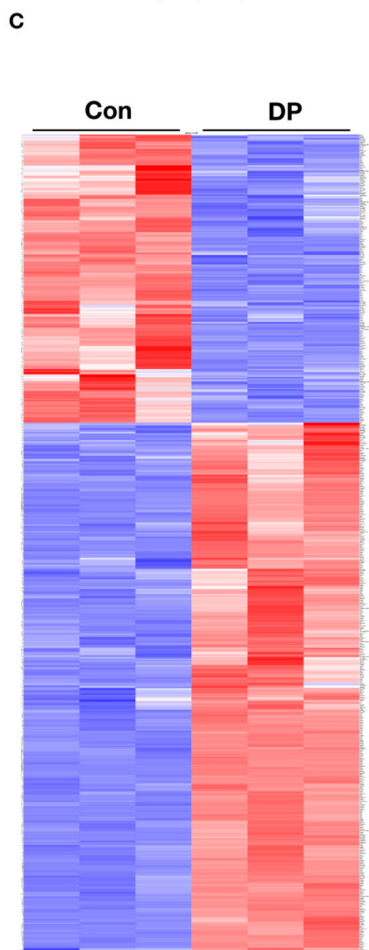
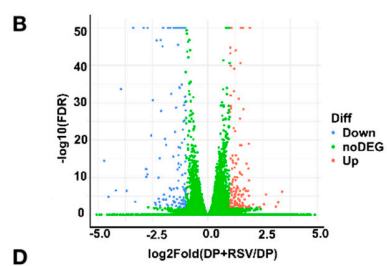
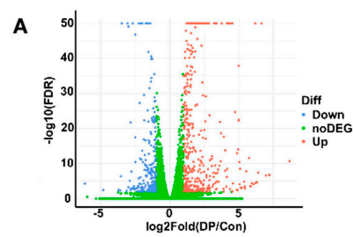


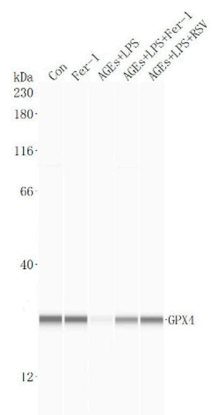
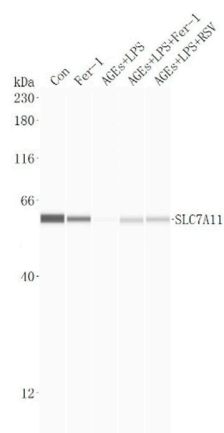
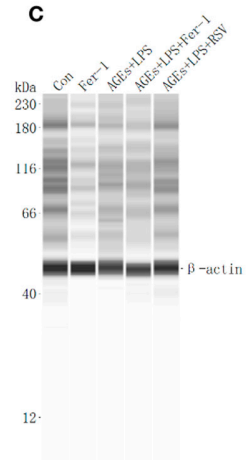
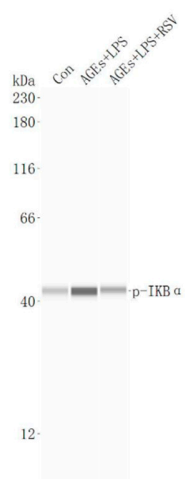
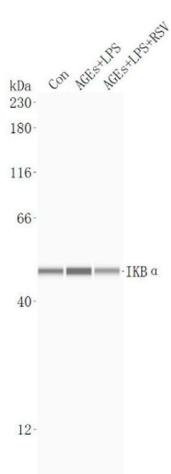
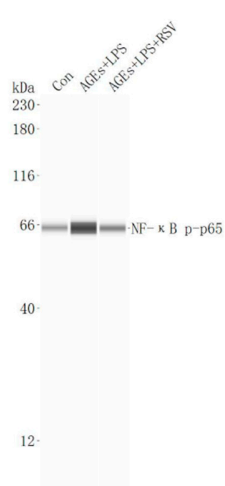
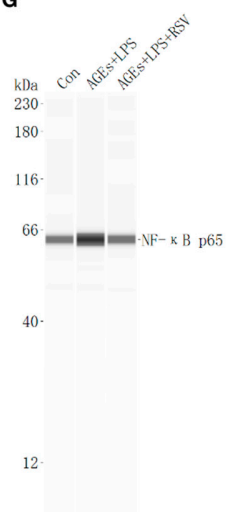
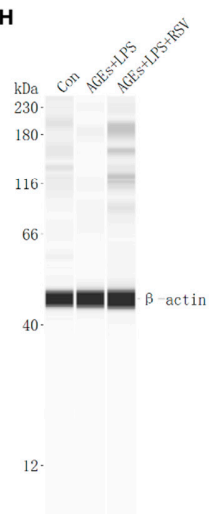
Supplementary materials



Supplementary Figure S1: (A) Flow chart of modeling of mice diabetes periodontitis disease model. (B) Blood glucose detection of mice at 12 weeks. *** $p < 0.001$.



Supplementary Figure S2: (A) Volcano map showing differentially expressed mRNAs. in Con vs. DP. (B) Volcano map showing differentially expressed mRNAs. in DP vs. DP+RSV. (C) Heatmap of differentially expressed mRNAs. in Con vs. DP. (D) Heatmap of differentially expressed mRNAs. in DP vs. DP+RSV. (E) Heatmap of callback genes highly related to ferroptosis. (F) Heatmap of TNF signaling pathway in callback genes.

A**B****C****D****E****F****G****H**

Supplementary Figure S3: Original blot for Fig. 4E. Capillary-based immunoassay analysis of (A) GPX4, (B) SLC7A11, and (C) β -actin in osteocytes. Original blot for Fig. 6C. Capillary-based immunoassay analysis of (D) p-IKB α , (E) IKB α , (F) NF- κ B p-p65, (G) NF- κ B p65, and (H) β -actin in osteocytes.