

Figure S1 - The liver mass per body weight at PND 45: Male control and SL (A), female control and SL (B), male control, vehicle and BBGC (C), female control, vehicle and BBGC (D) and male SL and BBGC + SL (E). Representative images of the liver and VAT stained with Haematoxylin-eosin (100 x) – liver and VAT from male SL (F and G, respectively) and liver and VAT from female SL (H and I, respectively).

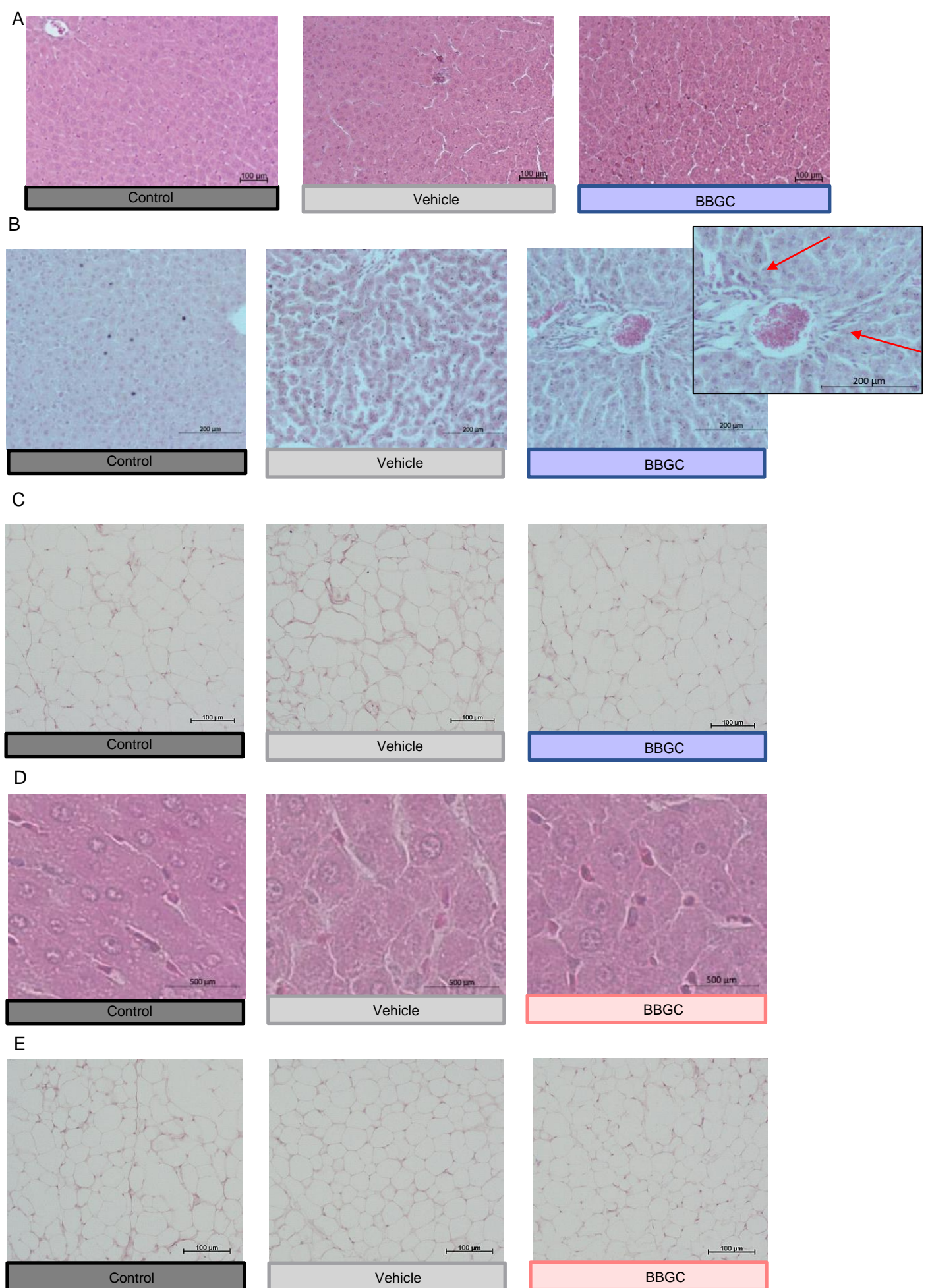
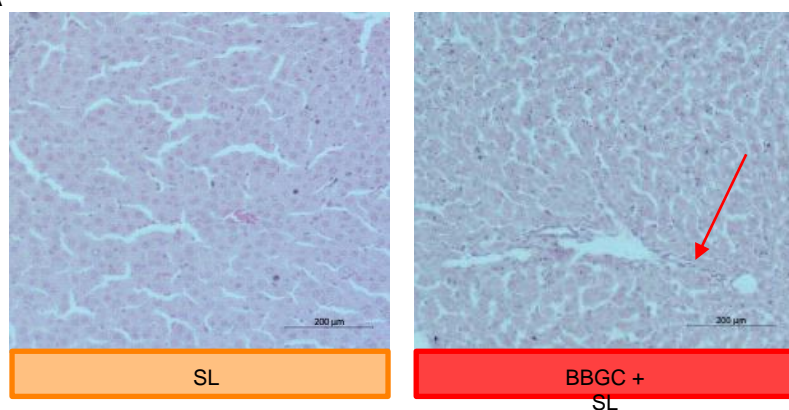


Figure S2 - Representative images of the liver and VAT stained with Haematoxylin-eosin (100 x) – liver from dams treated with BBGC (A); liver and VAT from male BBGC (B and C, respectively) and liver and VAT from female BBGC (D and E, respectively).



A



B

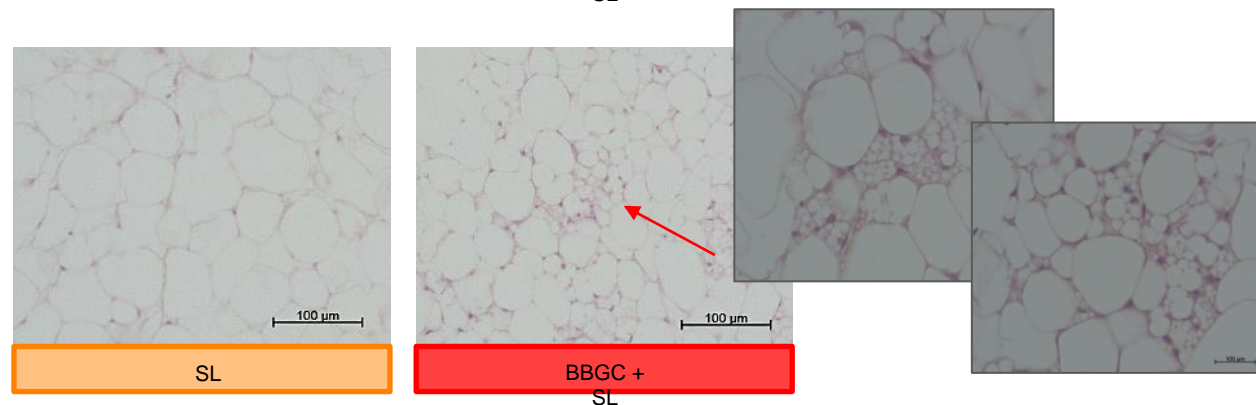


Figure S3 - Representative images of the liver and VAT stained with Haematoxylin-eosin (100 x) – liver and VAT from BBGC-offspring male SL (A and b, respectively).

Table S1 - Primary antibodies used in Western Blotting

Antibody	Molecular weight (kDa)	Dilution	Manufacturer	Secondary Antibody	Reference
Anti-AMPK $\alpha$	$\approx 62$ kDa	1:1000	Cell signaling	Anti-Rabbit	2532
Anti-p(Thr172)-AMPK $\alpha$	$\approx 62$ kDa	1:1000	Cell signaling	Anti-Rabbit	2535
Anti-Calnexin	83 kDa	1:2000	Sicgen	Anti-Goat	AB0037-500
Anti-D1R	$\approx 48$ kDa	1:1000	Abcam	Anti-Rabbit	ab81296
Anti-GHSR1 $\alpha$	$\approx 42$ kDa	1:500	Abcam	Anti-Rabbit	ab85104
Anti-Insulin R $\beta$	$\approx 95$ kDa	1:1000	Cell signaling	Anti-Rabbit	3025
Anti-MG-H1		1:1000	HycultBiotech	Anti-Mouse	HM5017
Anti-NPY1R	$\approx 52$ kDa	1:1000	Bio-Rad	Anti-Sheep	6732-0150
Anti-NPY2R	$\approx 52$ kDa	1:1000	Sicgen	Anti-Goat	AB0328-100
Anti-PPAR $\alpha$	$\approx 54$ kDa	1:1000	Abcam	Anti-Rabbit	ab227074
Anti-PPAR $\gamma$	$\approx 54$ kDa	1:1000	Cell Signalling	Anti-Rabbit	81b8