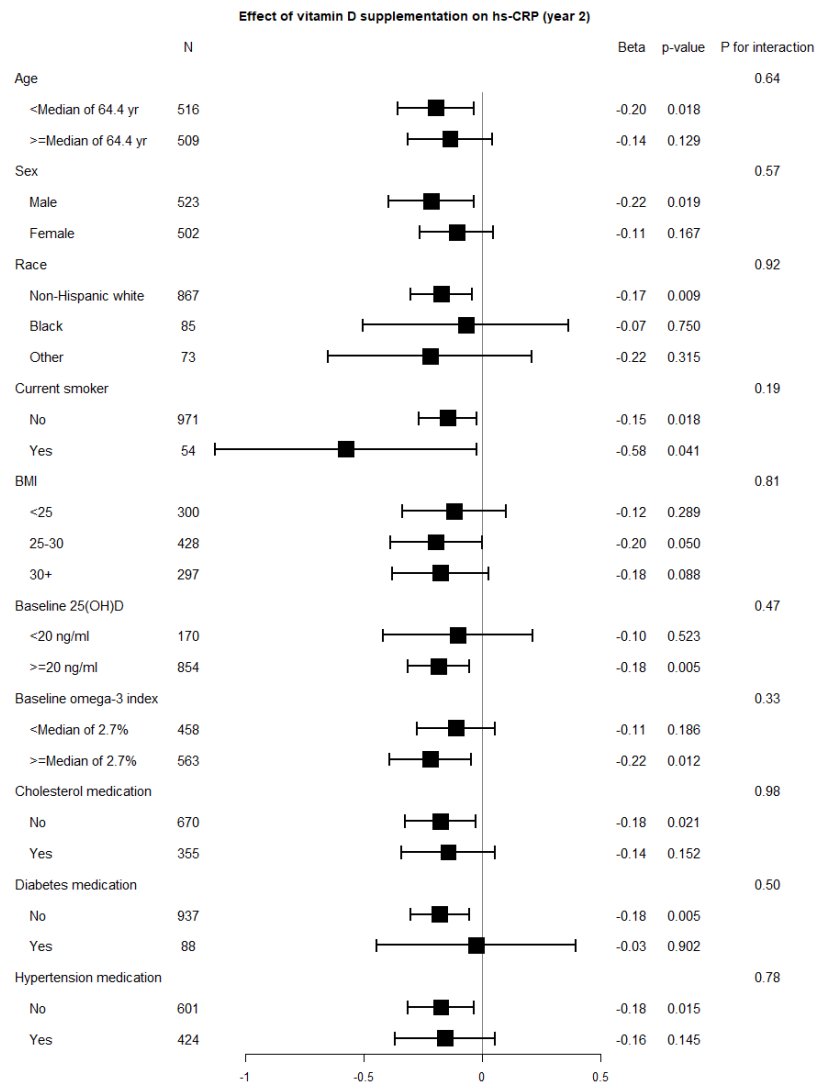


Online Supporting Material



Online Supporting Material

Supplemental Figure S1. Subgroup analysis for the effects of vitamin D₃ supplementation on hs-CRP at year 2. The effects of vitamin D₃ supplementation on hs-CRP were estimated by the interaction term of group assignment and measure time in two-level mixed-effects linear regression models. Autoregressive structure of order 1 of the within-group errors was assumed to account for successive observations with the groups. The hs-CRP was log-transformed. Models were adjusted for n-3 fatty acid randomization group (intention-to-treat analysis), age, sex, race, BMI, smoking, and taking medications for hypertension, diabetes, and lowering high cholesterol.