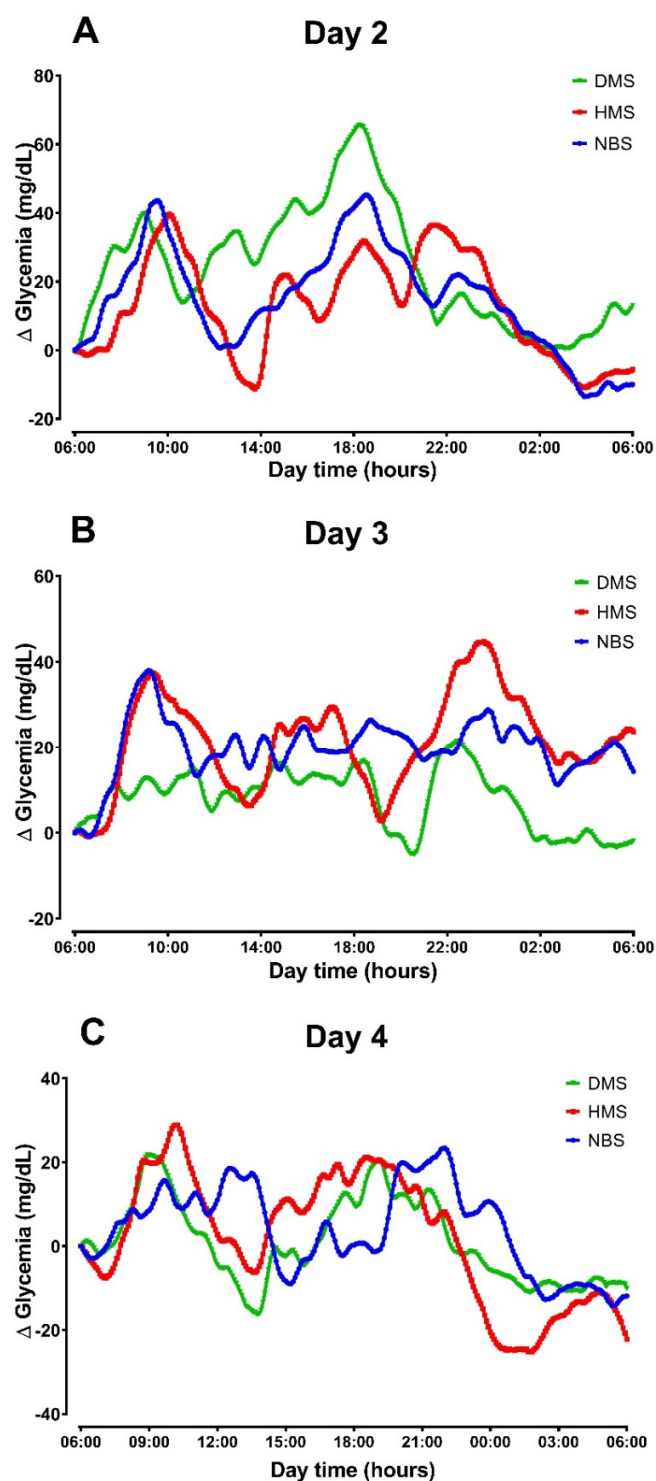
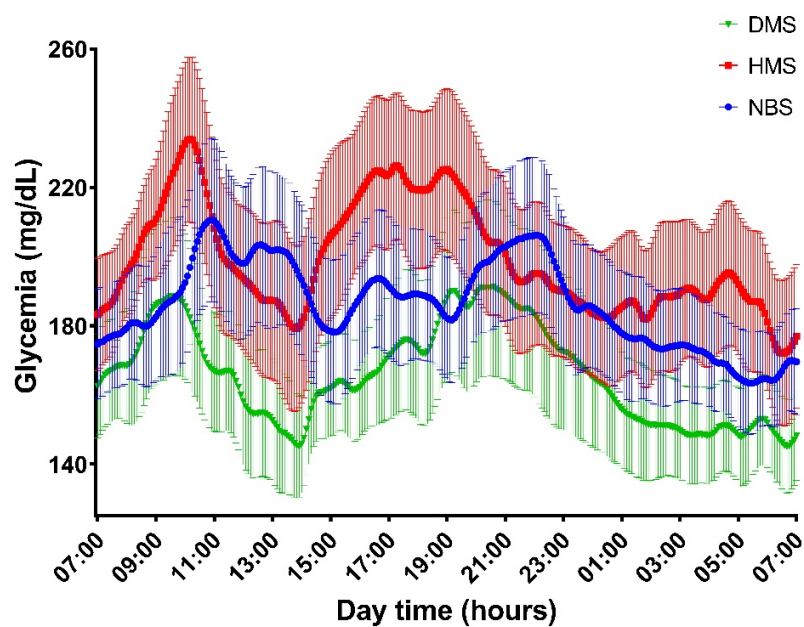


**Figure S1.** Effects of treatments containing resistant starch on glycemic excursions determined by CGM system during day 2 (A), day 3 (B), and day 4 (C). Data are expressed as only means of ten patients. Comparisons are based on Friedman test. DMS, Digestible Maize Starch; HMS, Hi Maize Starch; NBS, Native Banana Starch.



**Figure S2.** Effects of treatments containing resistant starch on incremental glycemic excursions determined by CGM system during day 2 (A), day 3 (B), and day 4 (C). Data are expressed as only means of ten patients. Comparisons are based on Friedman test. DMS, Digestible Maize Starch; HMS, Hi Maize Starch; NBS, Native Banana Starch.



**Figure S3.** Effects of treatments containing resistant starch on glycemic excursions during day 4. Data are expressed as means and SD of ten patients. Comparisons are based on one-way ANOVA and the Tukey's post-hoc test. DMS, Digestible Maize Starch; HMS, Hi Maize Starch; NBS, Native Banana Starch.