

Table S1 Composition of the rescue diet as specified by manufacturer.

Component (g/kg)	Weight (g)
Casein	200
L-Cystine	3
Lactose	200
Cellulose	50
Soybean oil	70
Vitamin and trace element premix	10
Calcium carbonate	18
Calcium phosphate	44
Starch	193
Maltodextrin	112
Sucrose	100

Table S2 siRNA sequences.

Name	Sense (5'-3')	Antisense (5'-3')
si-Pmaip1-1	CAGGAAGAUUGGAGAUAAA	UUUAUCUCCAAUCUCCUG
si-Pmaip1-2	CGAAAGAGCACGAUGAGAA	UUCUCAUCGUGCUCUUUCG
si-Pmaip1-3	CCGGAGAAUUGGAGACAAA	UUUGUCUCCAAUUCUCCGG

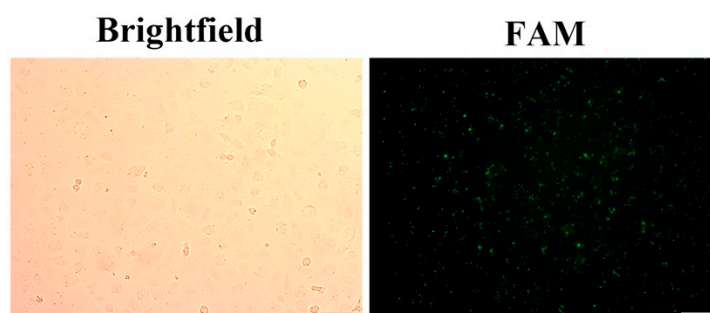


Figure S1. Transfection efficiency in IEC-6 cells determined by fluorescence microscope. The representative image shows the FAM fluorescence in the same site in the brightfield. Scale bar, 20  $\mu$ m.

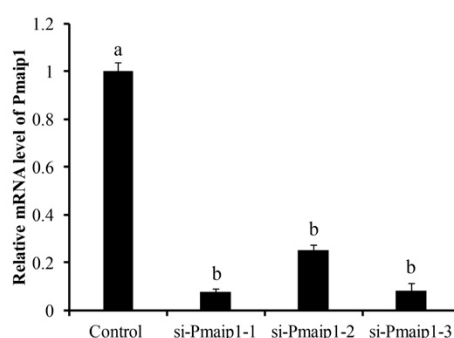


Figure S2. RT-qPCR results testing the knockdown efficiency of different pairs of si-Pmaip1 in IEC-6 cells at 24 h after si-Pmaip1 transfection. IEC-6 cells exposed to si-Pmaip1-1 and si-Pmaip1-2 had high mortality. The statistical analysis was performed by one-way ANOVA (lowercase letters indicate significant differences,  $p < 0.05$ ).