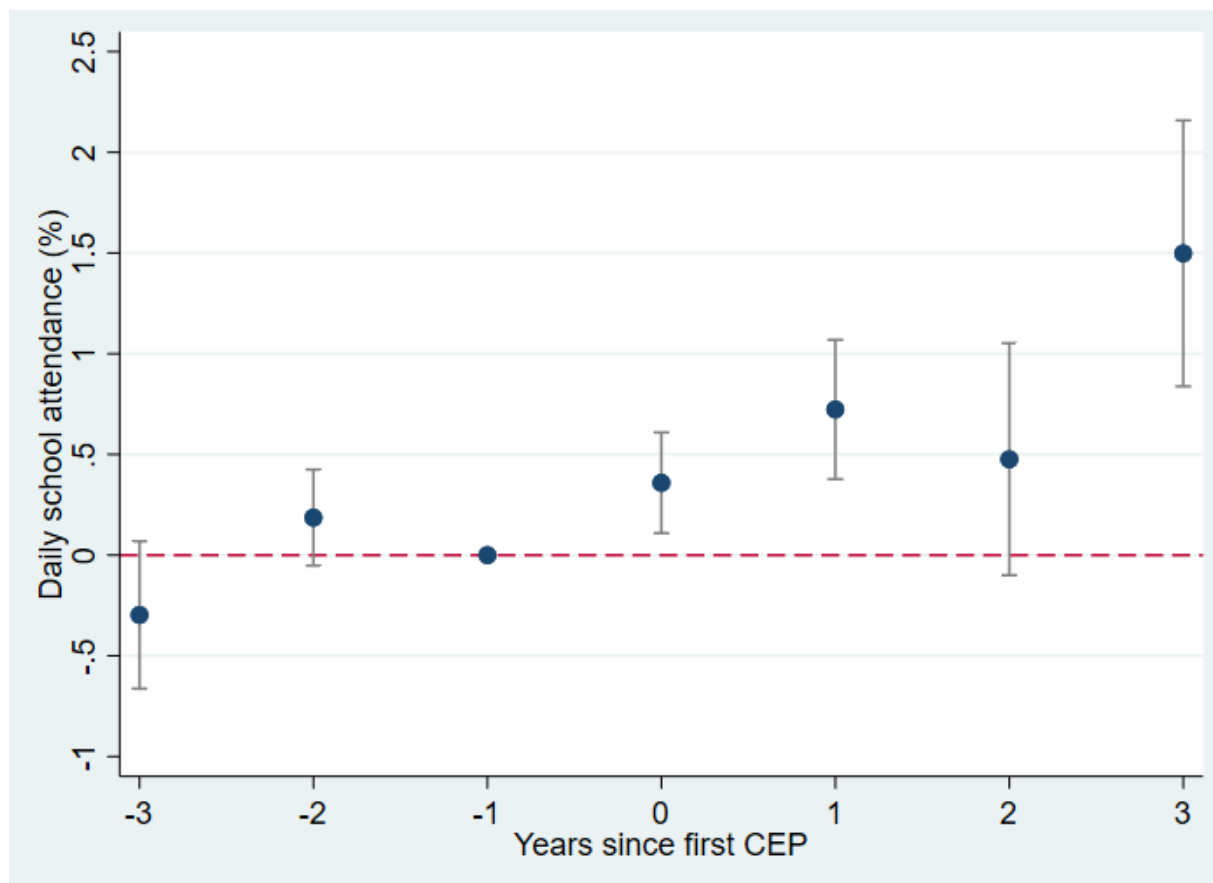


Figure S1. Event Study, Results: Daily school attendance (%), Full Sample



SOURCE: U.S. Department of Education, National Center for Education Statistics, Early Childhood Longitudinal Study, Kindergarten Class of 2010-11 (ECLS-K:2011), 2011-2016.

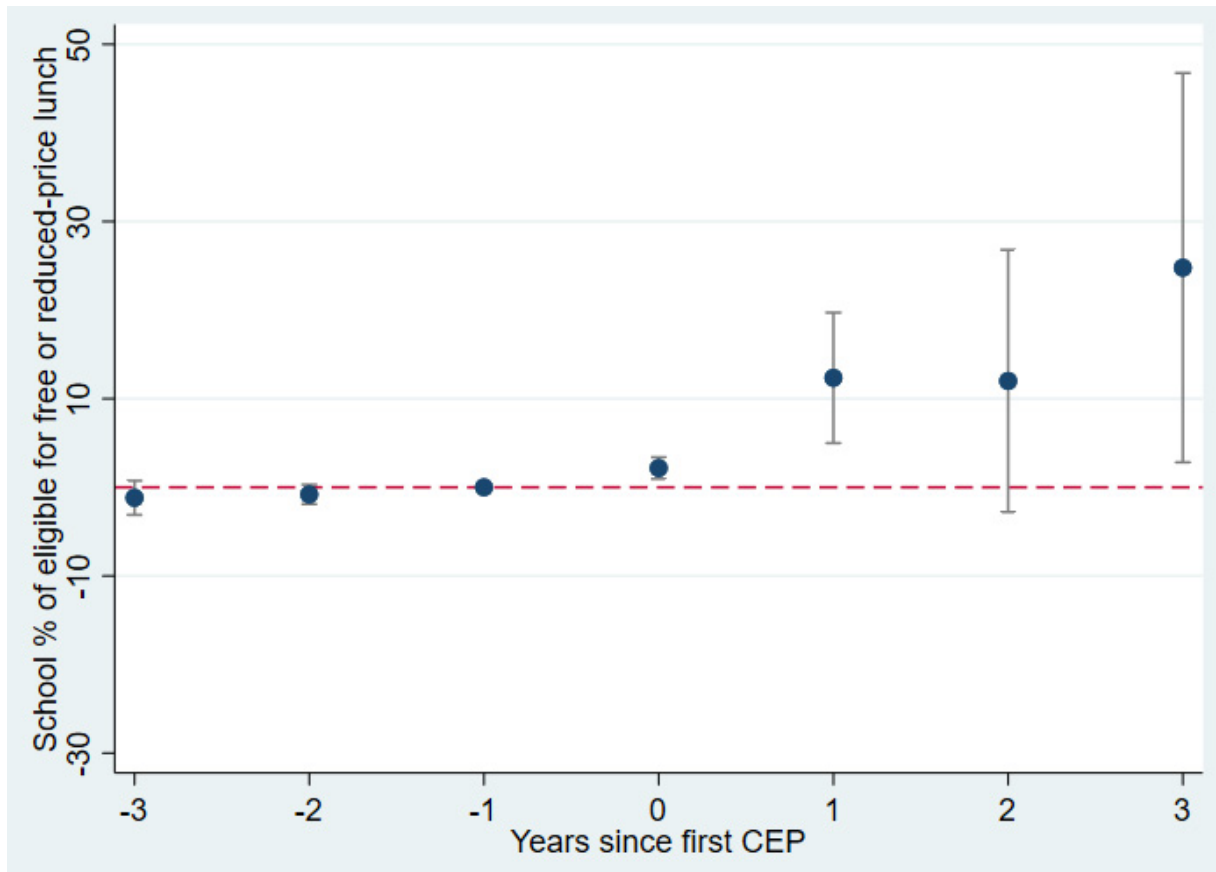
Notes: CEP: Community Eligibility Provision.

Figures display point estimates and corresponding 95 percent confidence intervals for the coefficients in event study.

The year just prior to first CEP exposure (-1) is the reference year.

All regressions include child random effects, school fixed effects, year fixed effects, and child-, and family-level covariates such as child's gender, race/ethnicity, household income below the 200% federal poverty level, primary language at home other than English and mother's education, and school-level time varying covariates such as percentage of poverty in a school district and the duration of the CEP participation by the school.

Figure S2. Event Study, Results: School % of eligible for free or reduced-price lunch, Full Sample



SOURCE: U.S. Department of Education, National Center for Education Statistics, Early Childhood Longitudinal Study, Kindergarten Class of 2010-11 (ECLS-K:2011), 2011-2016.

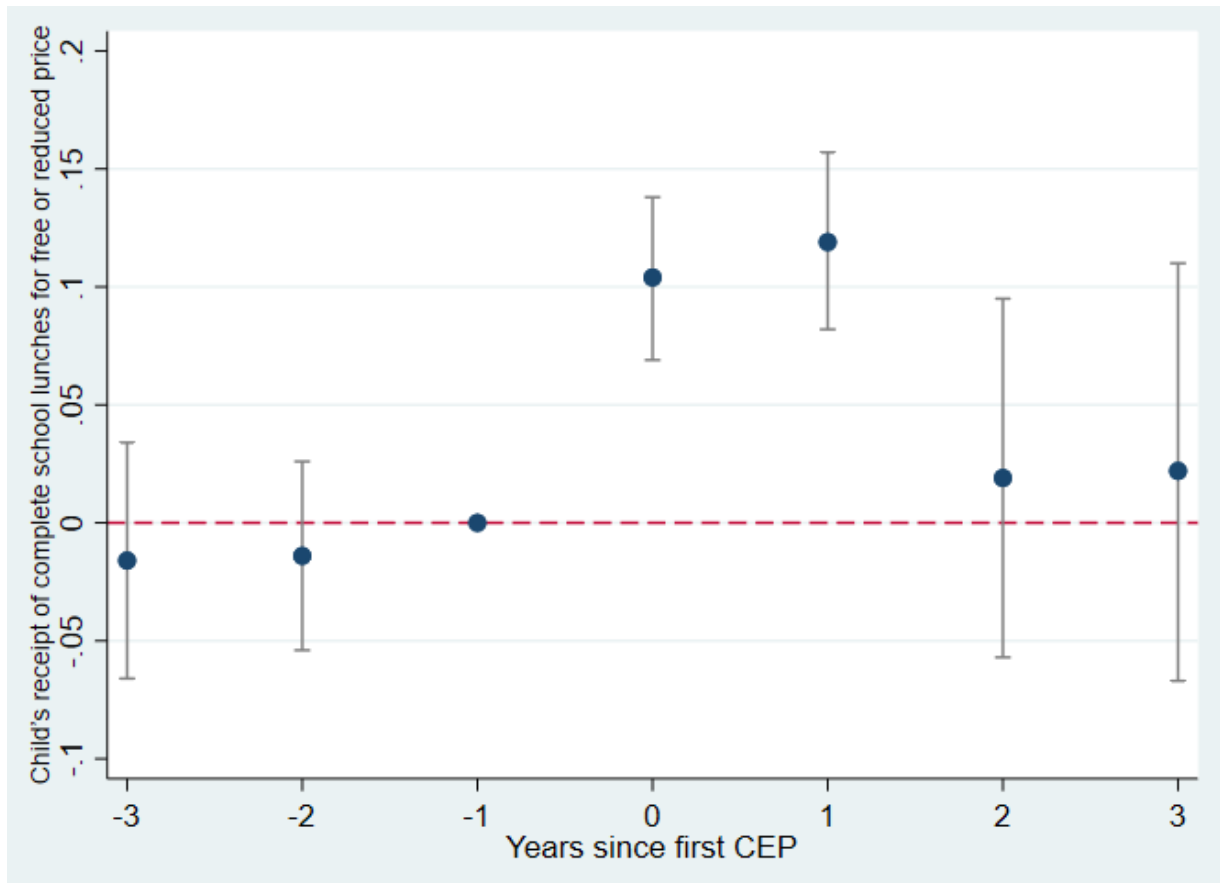
Notes: CEP: Community Eligibility Provision.

Figures display point estimates and corresponding 95 percent confidence intervals for the coefficients in event study.

The year just prior to first CEP exposure (-1) is the reference year.

All regressions include child random effects, school fixed effects, year fixed effects, and child-, and family-level covariates such as child's gender, race/ethnicity, household income below the 200% federal poverty level, primary language at home other than English and mother's education, and school-level time varying covariates such as percentage of poverty in a school district and the duration of the CEP participation by the school.

Figure S3. Event Study, Results: Child's receipt of complete school lunches for free or reduced price, Full Sample



SOURCE: U.S. Department of Education, National Center for Education Statistics, Early Childhood Longitudinal Study, Kindergarten Class of 2010-11 (ECLS-K:2011), 2011-2016.

Notes: CEP: Community Eligibility Provision.

Figures display point estimates and corresponding 95 percent confidence intervals for the coefficients in event study.

The year just prior to first CEP exposure (-1) is the reference year.

All regressions include child random effects, school fixed effects, year fixed effects, and child-, and family-level covariates such as child's gender, race/ethnicity, household income below the 200% federal poverty level, primary language at home other than English and mother's education, and school-level time varying covariates such as percentage of poverty in a school district and the duration of the CEP participation by the school.