

Supplementary materials

Water-Soluble Lead Sulfide Nanoparticles: Direct Synthesis and Ligand Exchange Routes

Saar Pfeffer ^{1,2}, Vladimir Ezersky ², Sofiya Kolusheva ² and Yuval Golan ^{1,2,*}

¹ Department of Materials Engineering, Ben-Gurion University of the Negev, Beer-Sheva 8410501, Israel; saarpf@post.bgu.ac.il

² Ilse Katz Institute for Nanoscale Science and Technology, Ben-Gurion University of the Negev, Beer-Sheva 8410501, Israel; ezersky@bgu.ac.il (V.E.); kolushev@bgu.ac.il (S.K.)

* Correspondence: ygolan@bgu.ac.il

S.1. EDS analysis

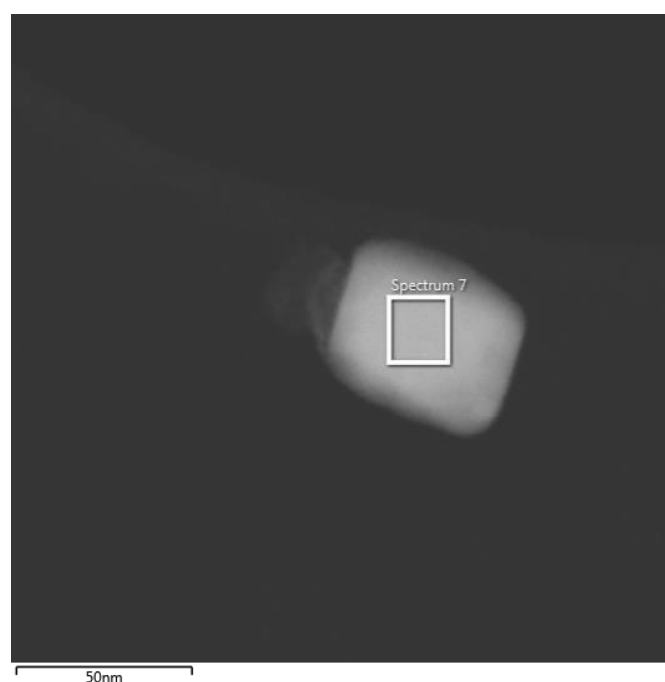


Figure S1. Typical STEM image of a PbS nano-cube synthesized directly in presence of PVP.

Table S1. Semi-quantitative EDS/STEM analysis from the particle shown in Figure S1.

Spectrum Label	Spectrum 7 (atomic %)
S	49
Pb	51
Total	100