

Supporting Information

Fabrication of NiFe-LDHs Modified Carbon Nanotubes as the High-Performance Sulfur Host for Lithium–Sulfur Batteries

Lingwei Zhang ^{1,2}, Runlan Li ¹ and Wenbo Yue ^{1,*}

¹ Beijing Key Laboratory of Energy Conversion and Storage Materials, College of Chemistry, Beijing Normal University, Beijing 100875, P. R. China

² College of Chemistry, Xi'an Jiaotong University, Xi'an 710049, China

*Corresponding authors:

Yue WB, Tel: +86 (0)10 58804229, E-mail: wbyue@bnu.edu.cn

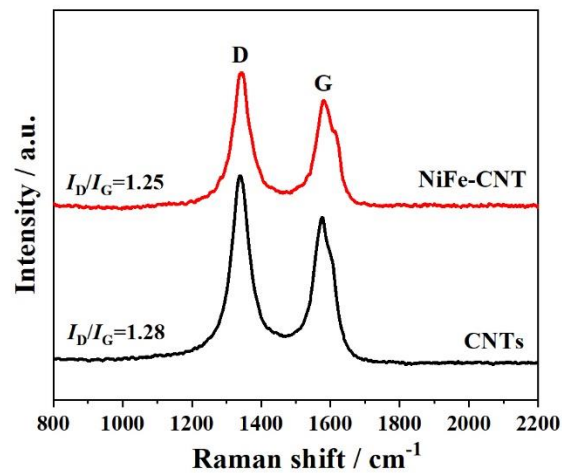


Figure S1. Raman spectra of NiFe-CNT and CNTs.

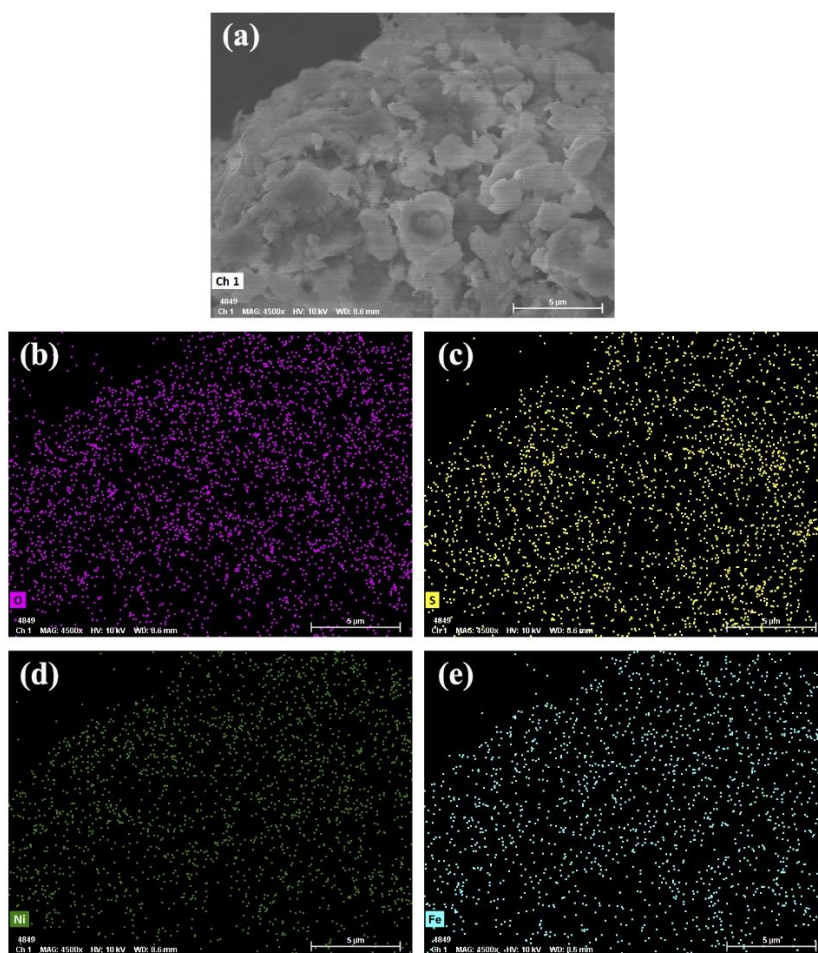


Figure S2. (a) SEM image of NiFe-LDH@S and EDX elemental mappings of (b) O, (c) S, (d) Ni and (e) Fe.

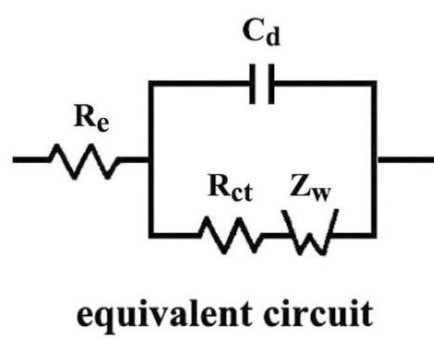


Figure S3. Randles equivalent circuit for NiFe-LDH@S and NiFe-CNT@S.