

Carbon nanotubes for confinement-induced energetic nanomaterials

*Ruben Acevedo, Brigitte Soula, Anne Marie Galibert, and Emmanuel Flahaut**

CIRIMAT, Université Toulouse 3 Paul Sabatier, Toulouse INP, CNRS, Université de Toulouse,
118 Route de Narbonne, 31062 Toulouse Cedex 9 - France
E-mail: emmanuel.flahaut@univ-tlse3.fr

Supplementary Data

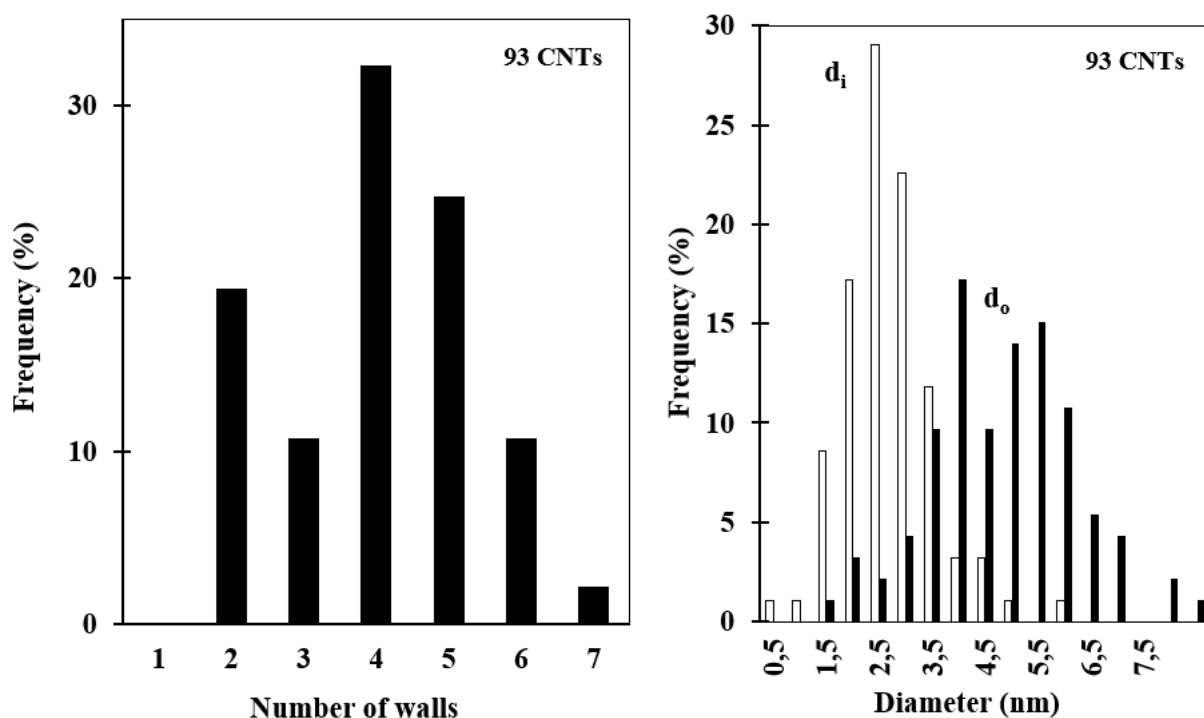


Figure S1. Distribution of the number of walls and diameters (inner, outer) for the MWNTs used in this work.

Table S1. DSC representative data for each type of nanomaterial with the Werner complex.

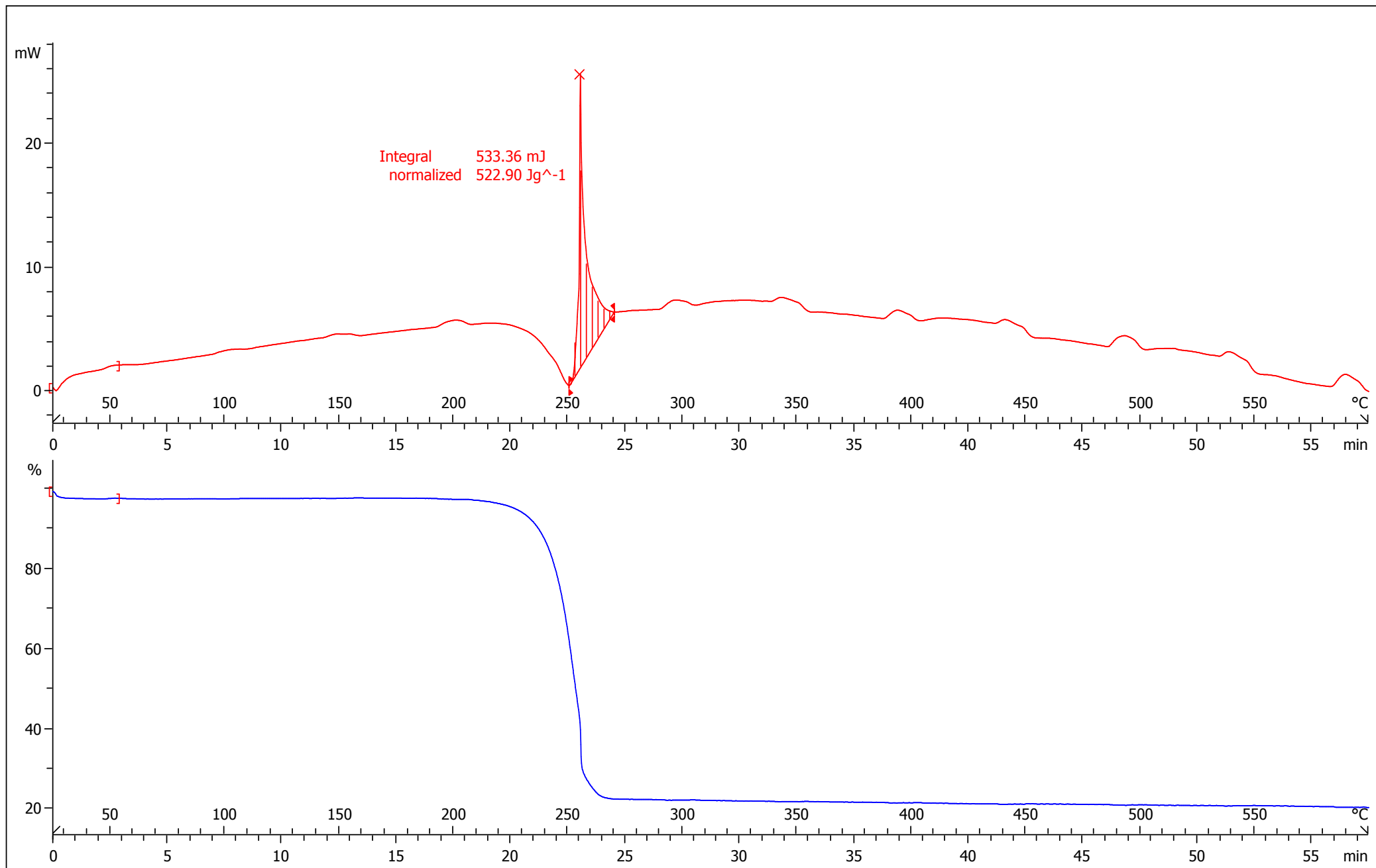
The compounds and their data in bold are those listed in table 1 of the publication.

Compound	sample name	mass (mg)	Normalized energy output (kJ/g)	Max. Peak T (°C)	FWHM (°C)
Werner complex (W)	AGA305	1.02	0.5	253.2	3.2
	commercial	1.04	0.33	251.7	3.4
W@ox-DWNT	RA070314_ImW	1.0	14.6	396.3	52.0
W@ox-MWNT	AT2+MW	1.88	21.41	350.8	68.0
	AT5+MW	1.28	14.62	470.0	65.0
	AT6A+MW	1.1	21.86	372.5	93.0
	AT7+MW	0.92	23.3	342.2	59.5
	CCIAL+MW	0.82	26.79	380.0	100.7
W@ox-MWNT (reflux)	RAT8E+MW	1.68	22.65	490.0	90.0
	RAT8L+MW	0.85	28.09	504.8	113.3
W@ox-CNF	AT2+NF	1.03	15.06	512.8	121.7
	AT5+NF	1.08	13.21	519.8	84.3
	AT5'+NF	1.47	12.0	538.8	92.4
	AT6A+NF	1.03	12.07	515.3	128.0
	CCIAL+NF	0.62	12.18	515.5	86.9

Thermogravimetric analysis data for the samples with names in bold in table S1 are shown in the next pages.

^Λexo

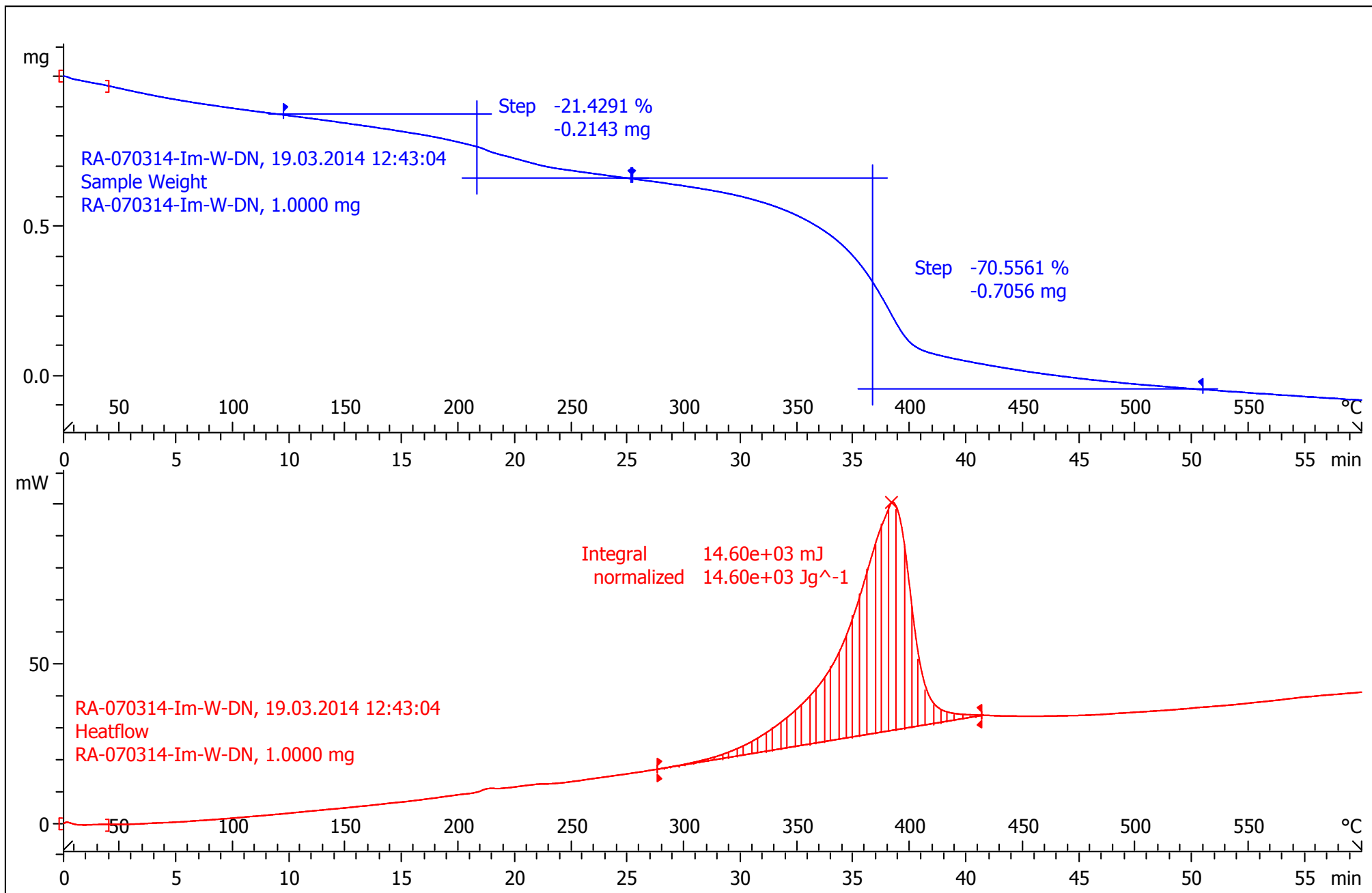
AGA305



exo

140319-RA070314-Im-W-DW

19.03.2014 13:16:13



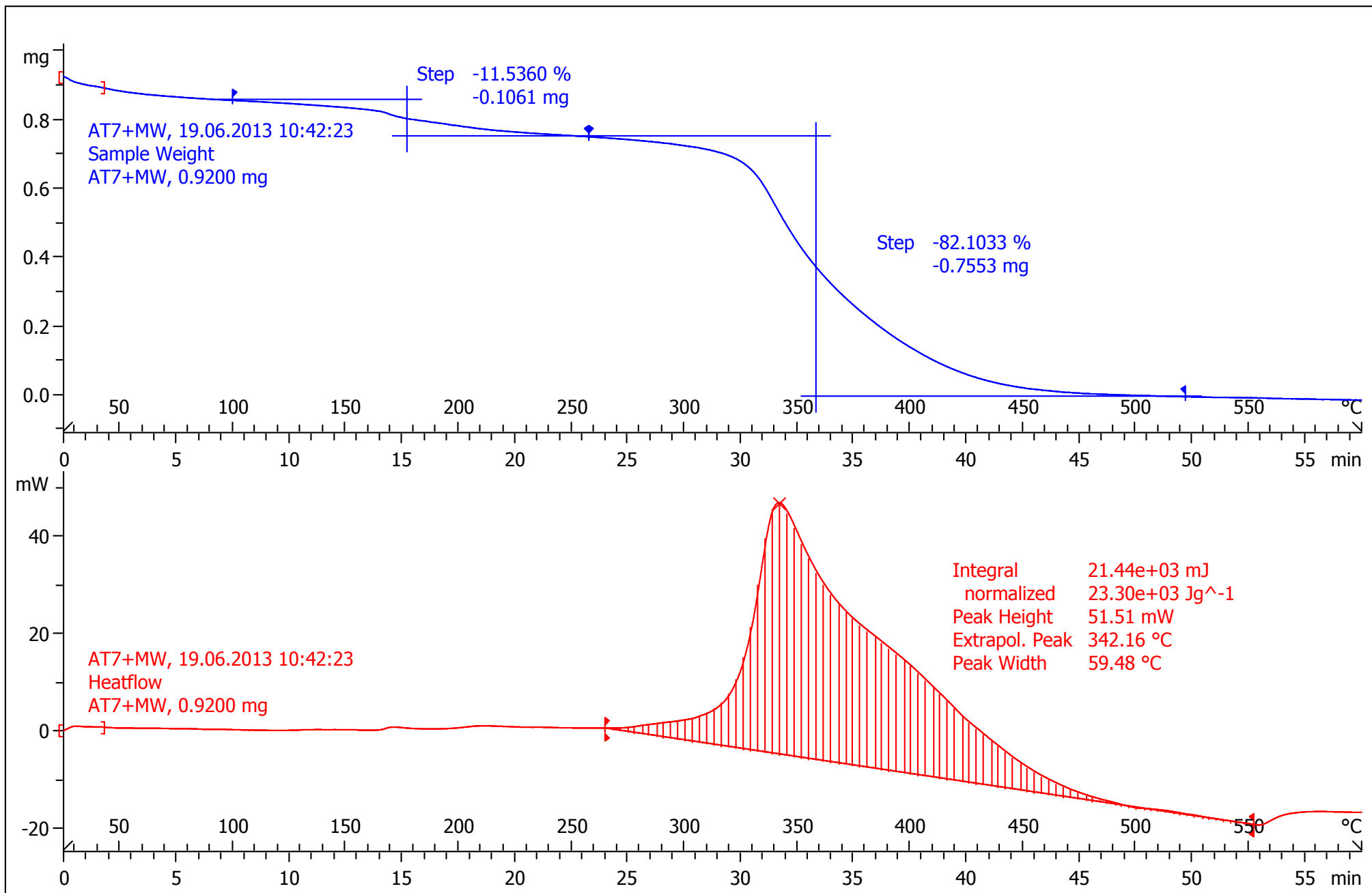
CIRIMAT: METTLER

STAR® SW 10.00

^exo

130619-AT7+MW

19.06.2013 10:55:14



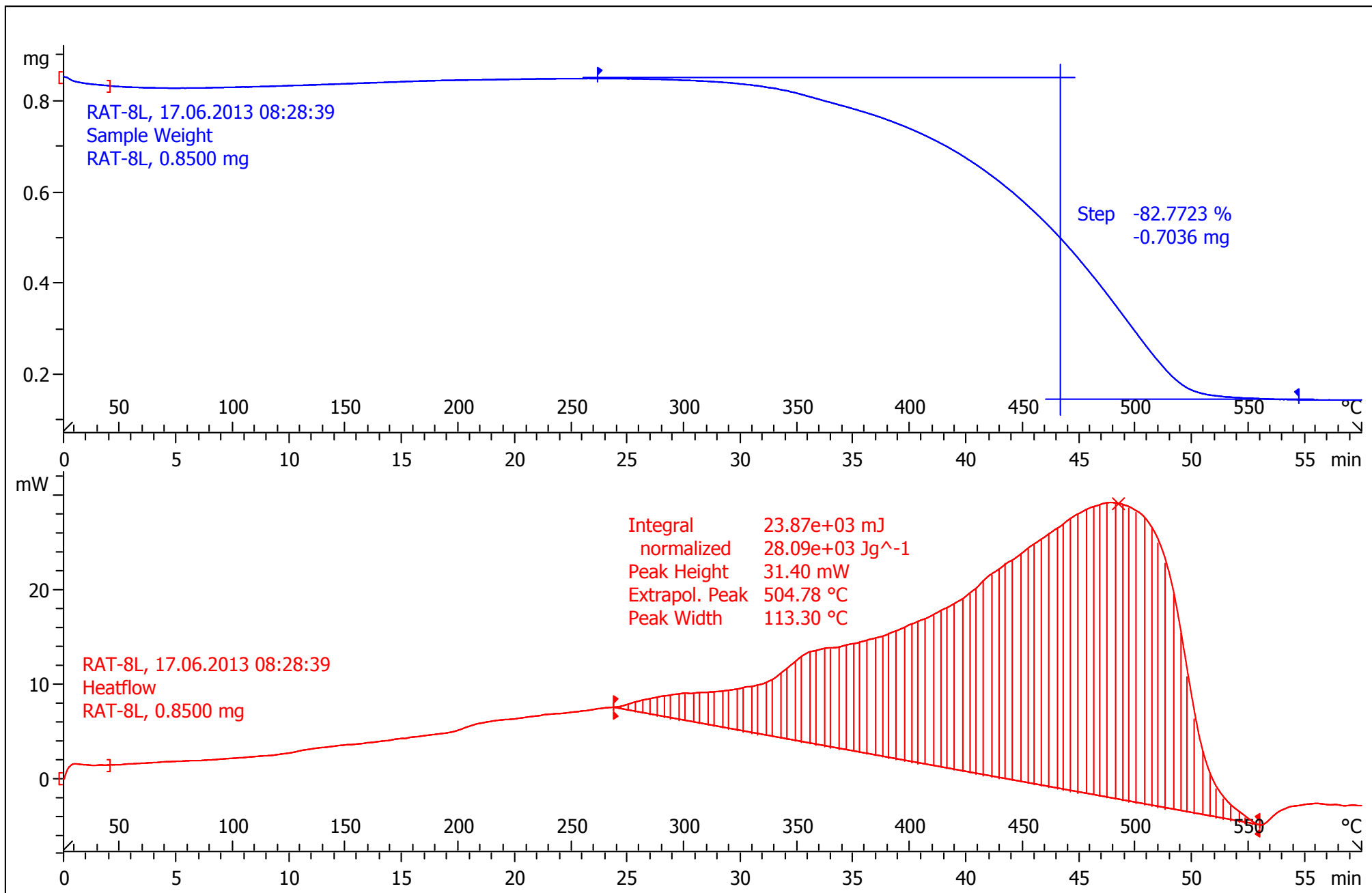
CIRIMAT: METTLER

STAR[®] SW 10.00

exo

RAT-8L

17.06.2013 10:02:27



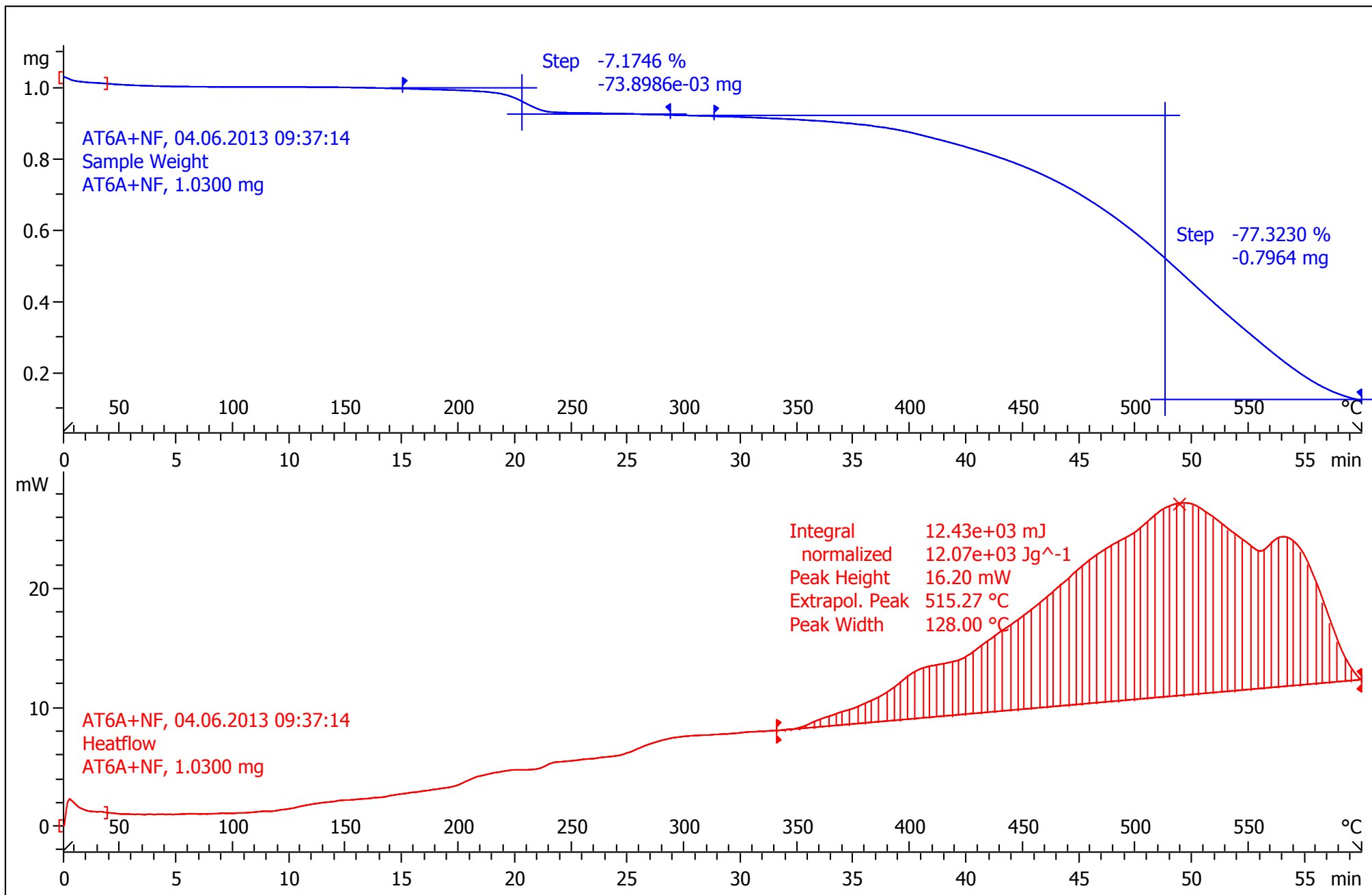
CIRIMAT: METTLER

STAR[®] SW 10.00

^exo

130604-AT6+NF

05.06.2013 07:12:31



CIRIMAT: METTLER

STAR[®] SW 10.00