

Article

CuInS₂ Nanocrystals Embedded PMMA Composite Films: Adjustment of Polymer Molecule Weights and Application in Remote-Type White LEDs

Qingchao Zhou * and Zhongyi Shang

School of Jewelry, West Yunnan University of Applied Sciences, Tengchong
679100, China; 2190235@wyuas.edu.cn

* Correspondence: qczhou@wyuas.edu.cn

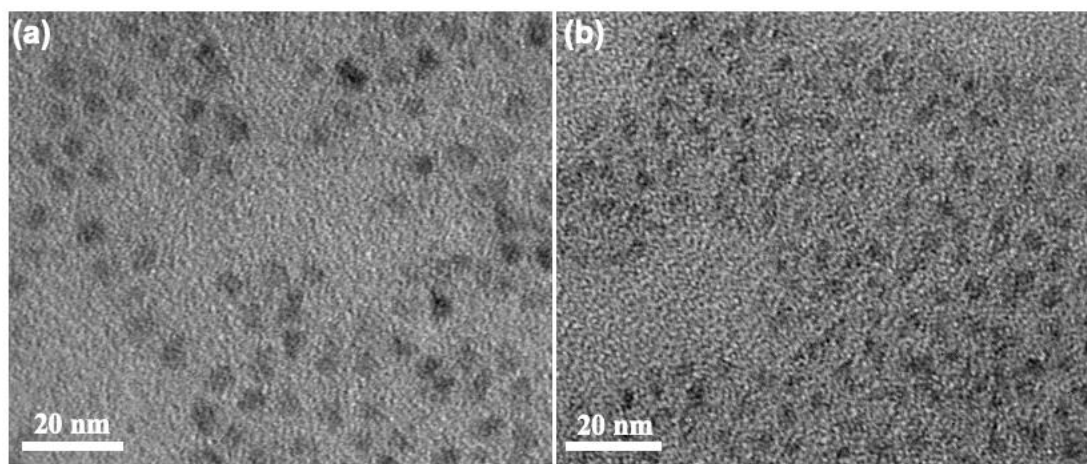


Figure S1. (a) TEM images of green emissive CuInS₂ NCs; (b) TEM images of red emissive CuInS₂ NCs.

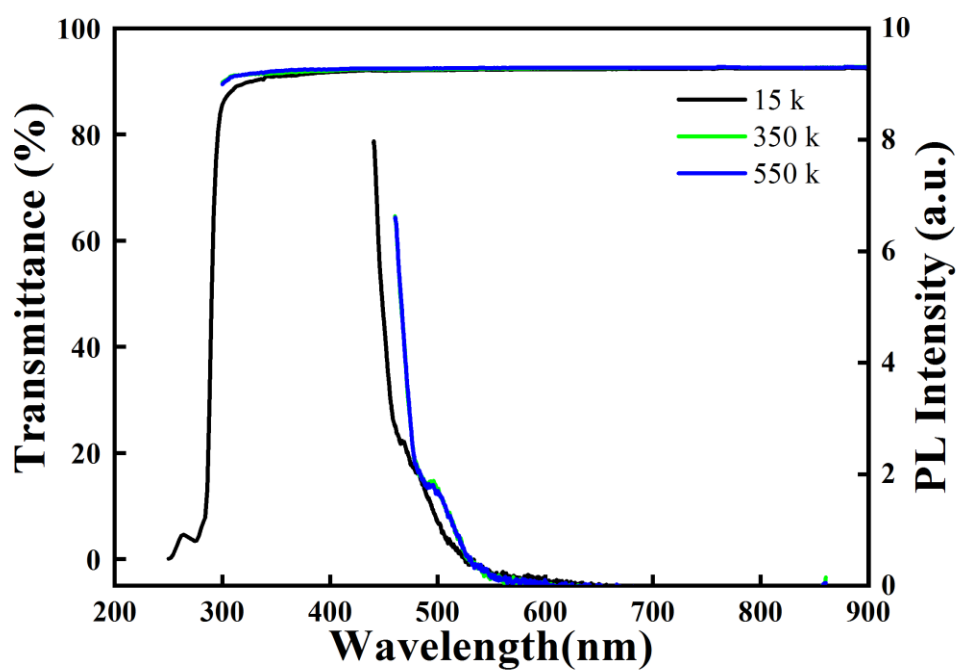


Figure S2. Transmittance and fluorescence spectra of PMMA films with different molecular weights.

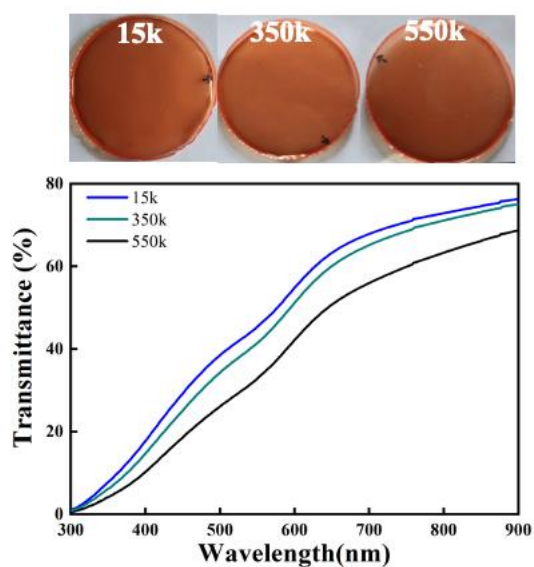


Figure S3. Transmittance spectra of composite films with 5wt% red emissive CuInS₂ NCs dispersed in PMMA with different molecular weights.