

Supplementary Material

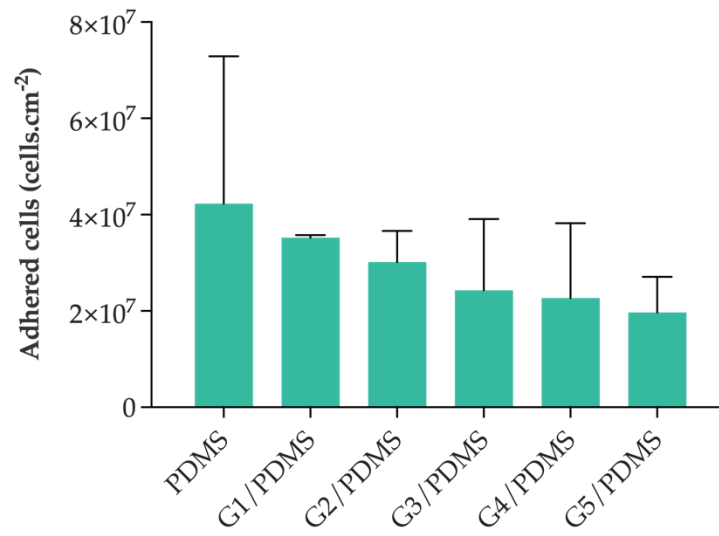


Figure S1. *C. marina* adhered cells on PDMS, G1/PDMS, G2/PDMS, G3/PDMS, G4/PDMS, and G5/PDMS surfaces after incubation for 7.5 h at 185 rpm. Results are presented as mean \pm SD.

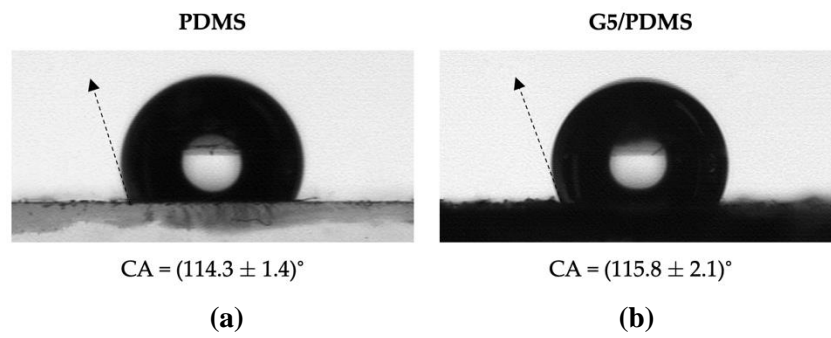


Figure S2. Representative images of water contact angle (CA) measurements on PDMS (a) and G5/PDMS (b) surfaces.

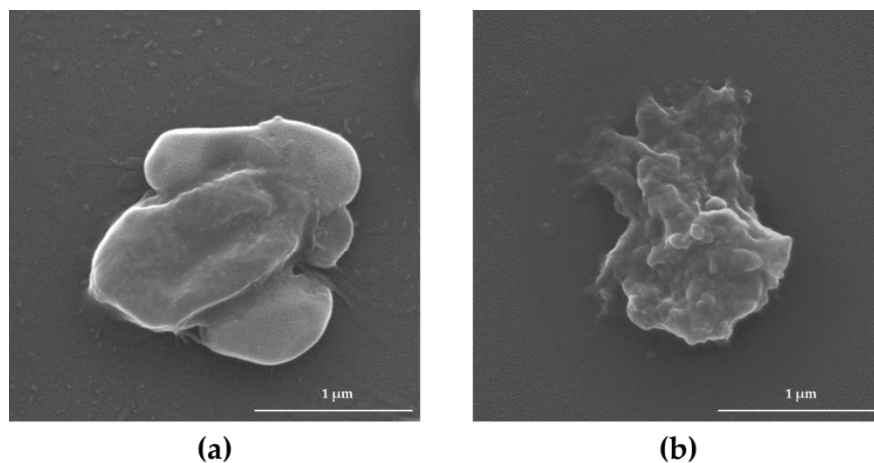


Figure S3. Scanning Electron Microscopy (SEM) of *C. marina* cells not exposed (a) and exposed to GNP 5% (w/v) (b) for 24 h (magnification of 50,000× and white scale bars of 1 μm). Cell damage occurred in bacterial cells exposed to graphene.

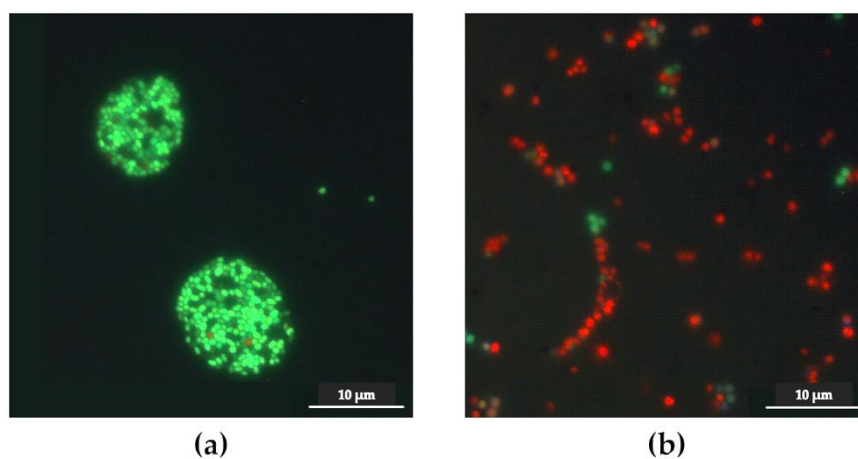


Figure S4. Epifluorescence microscopy visualization of *C. marina* cells not exposed (a) and exposed to GNP 5% (w/v) (b) for 24 h (scale bars of 10 μm). Viable cells appear green and dead cells appear red after being stained with the Invitrogen Live/Dead® kit.