



A Facile Strategy toward the Preparation of a High-Performance Polyamide TFC Membrane with a CA/PVDF Support Layer

Feng Liu ^{1,2}, Yanyan Li ³, Lun Han ¹, Zhenzhen Xu ¹, Yuqi Zhou ⁴, Bingyao Deng ^{4,*} and Jian Xing ^{1,*}

¹ School of Textile and Garment, Anhui Polytechnic University, Wuhu 241000, China

² Advanced Fiber Materials Engineering Research Center of Anhui Province, Anhui Polytechnic University, Wuhu 241000, China

³ College of Materials and Textile Engineering, Jiaying University, Jiaying 314001, China

⁴ Laboratory for Advanced Nonwoven Technology, Key Laboratory of Eco-Textiles, Ministry of Education, Jiangnan University, Wuxi 214122, China

Correspondence: bydeng@jiangnan.edu.cn (B.D.); xingjian@ahpu.edu.cn (J.X.); Tel.: +86-13806185561 (B.D.)

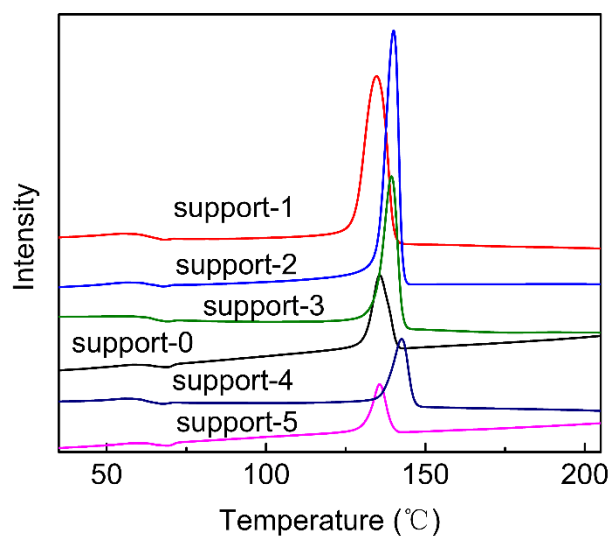


Figure S1. The DSC temperature-rising curves of different supports.

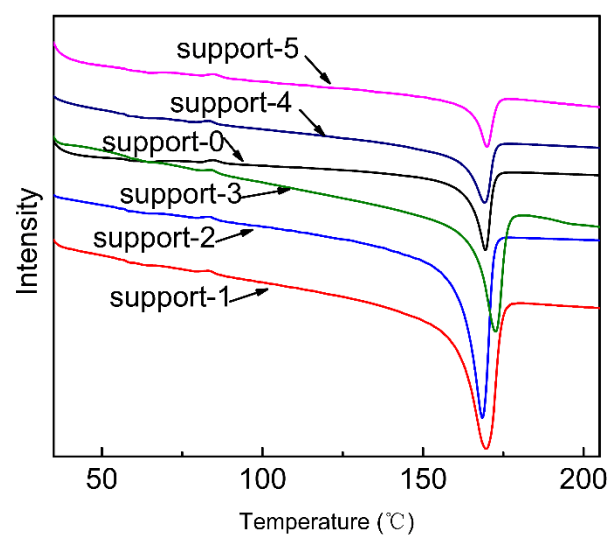


Figure S2. The DSC lowering temperature curves of different supports.

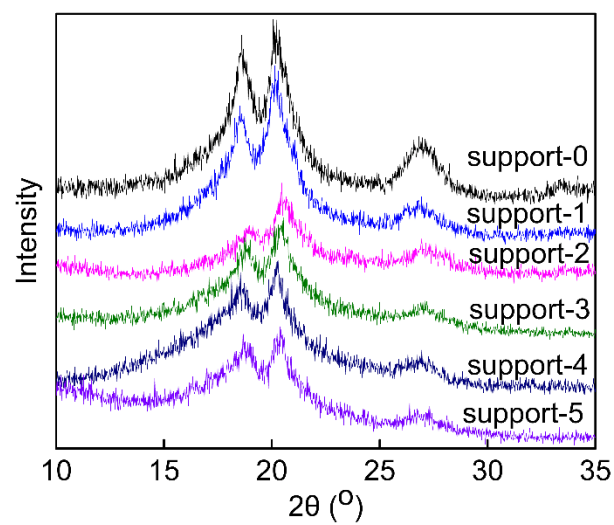


Figure S3. The XRD curves of different supports.

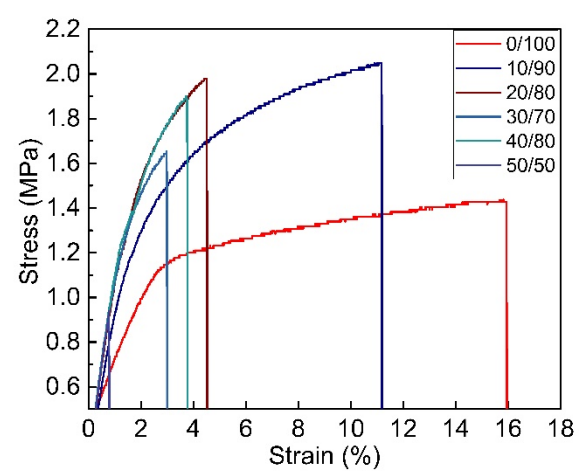


Figure S4. The stress-strain curves of different supports.