

Supplementary Material

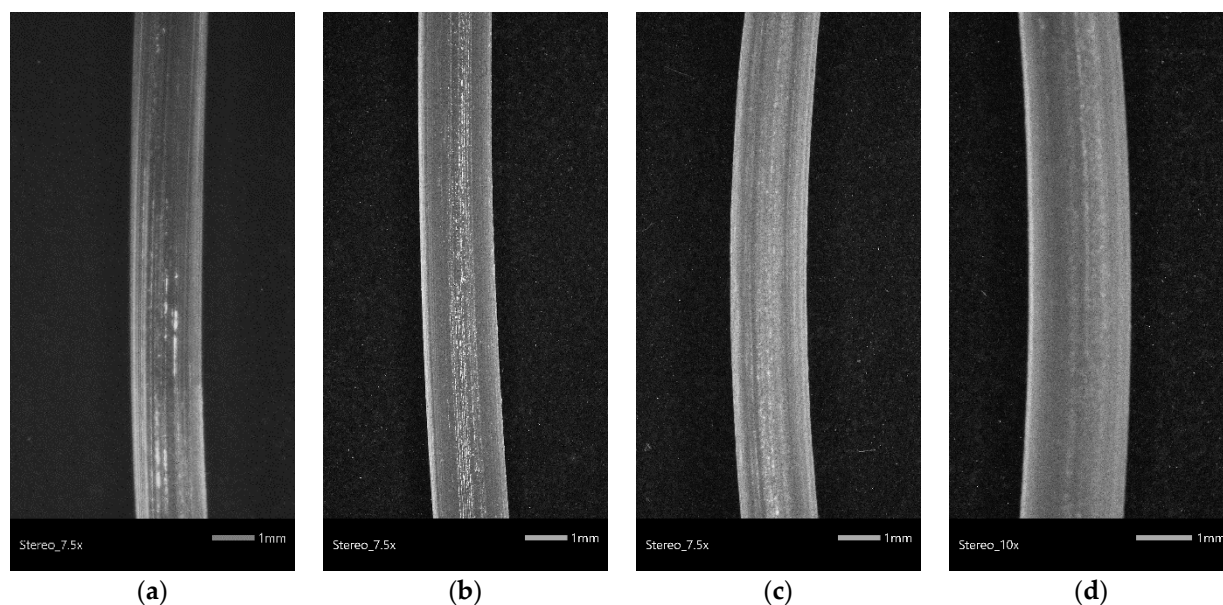
# Physicochemical Characterization and Finite Element Analysis-Assisted Mechanical Behavior of Polylactic Acid-Montmorillonite 3D Printed Nanocomposites

Maria-Eirini Grigora <sup>1</sup>, Zoe Terzopoulou <sup>2,\*</sup>, Konstantinos Tsongas <sup>1</sup>, Dimitrios N. Bikiaris <sup>2</sup> and Dimitrios Tzetzis <sup>1,\*</sup>

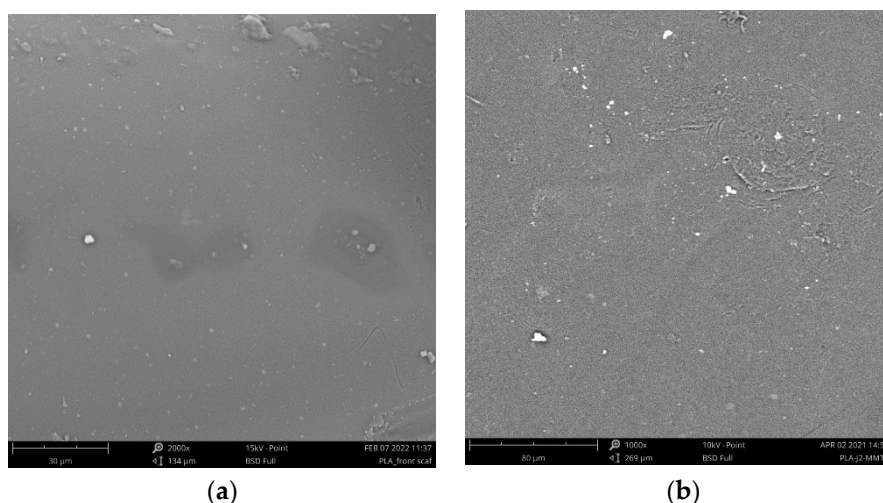
<sup>1</sup> Digital Manufacturing and Materials Characterization Laboratory, School of Science and Technology, International Hellenic University, Thessaloniki, 57001, Greece; megrigora@ihu.edu.gr (M.-E.G.); k.tsongas@ihu.edu.gr (K.T.)

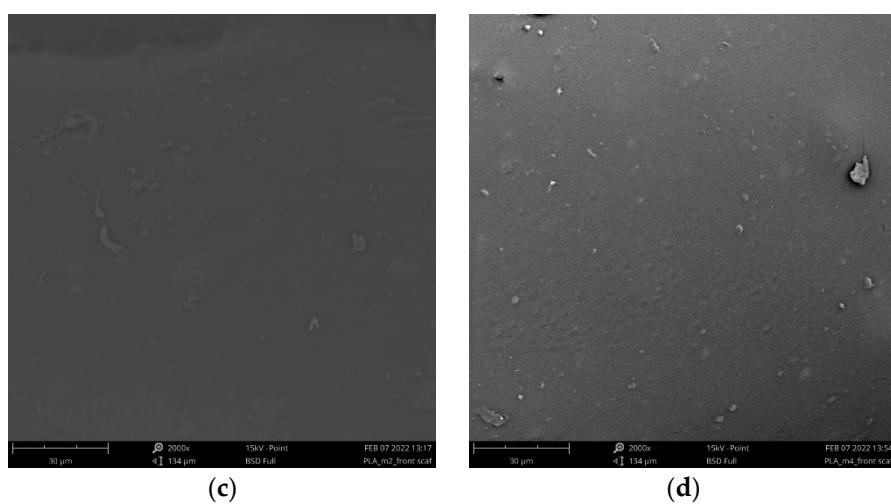
<sup>2</sup> Laboratory of Polymer Chemistry and Technology, Department of Chemistry, Aristotle University of Thessaloniki, 54124 Thessaloniki, Greece; dbic@chem.auth.gr

\* Correspondence: d.tzetzis@ihu.edu.gr (D.T.)

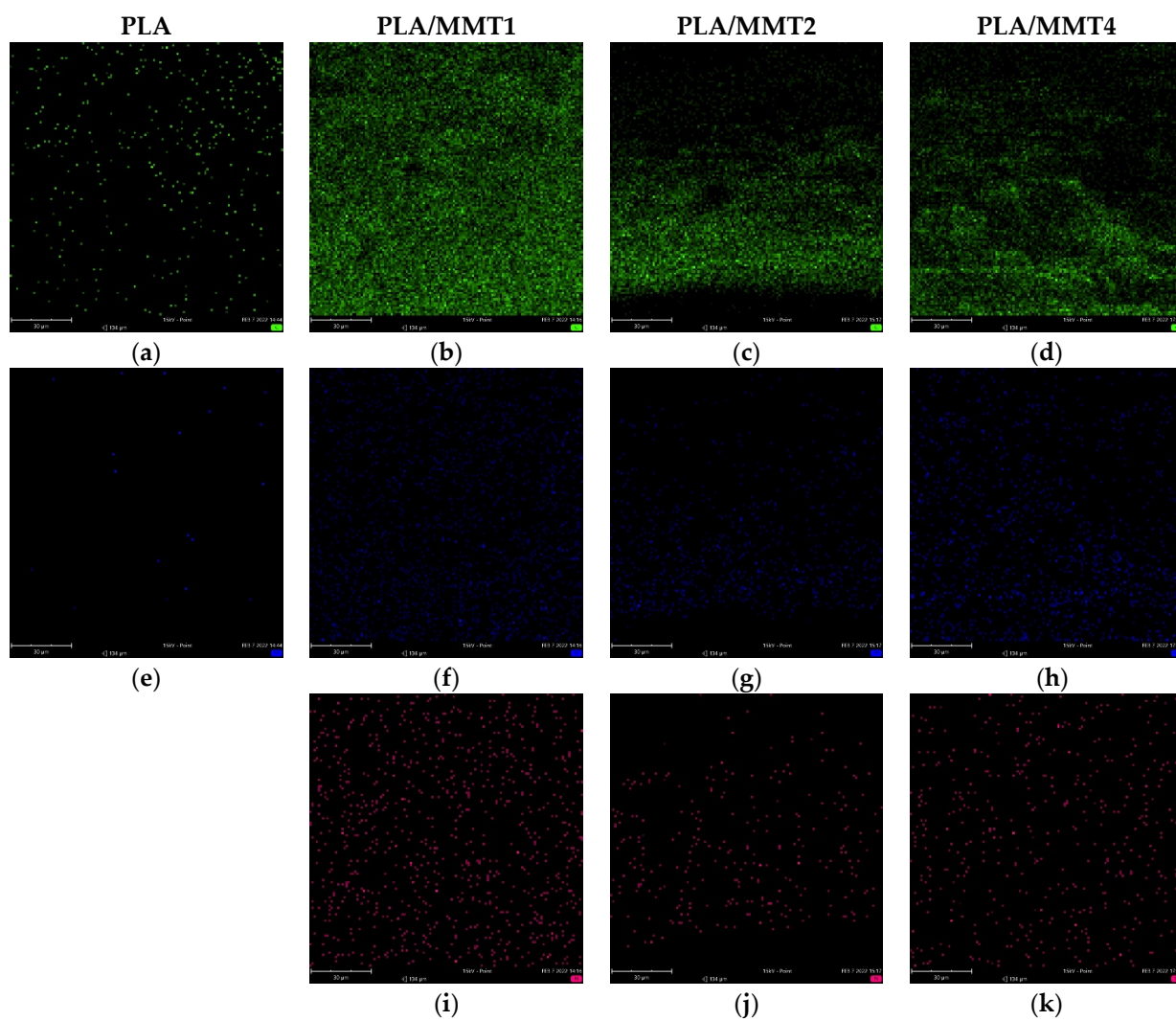


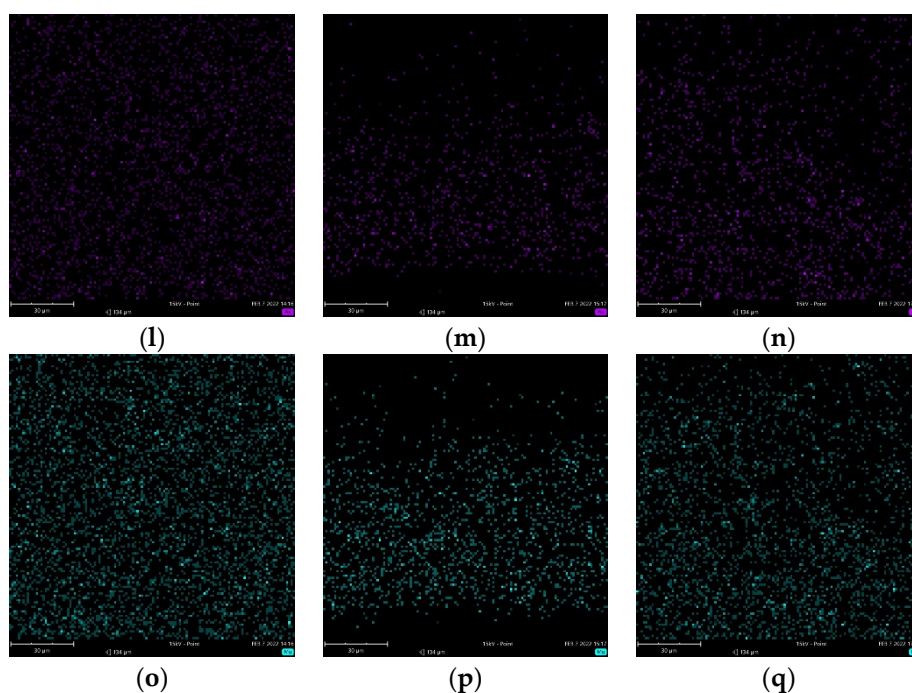
**Figure S1.** Stereoscope images of (a) PLA, (b) PLA/MMT1, (c) PLA/MMT2 and (d) PLA/MMT4 filaments through FFF technology.



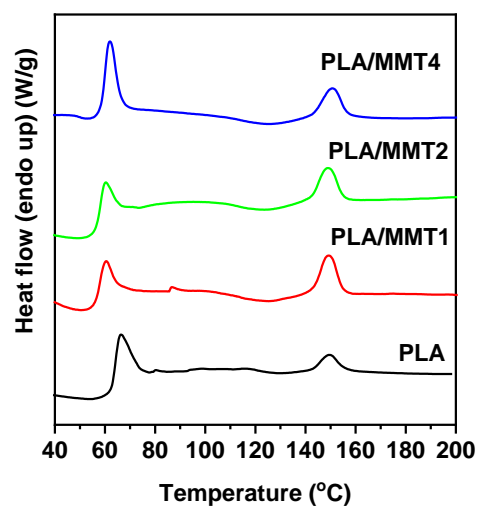


**Figure S2.** SEM microstructure of the top view of 3D printed specimens (a) PLA, (b) PLA/MMT1 (c) PLA/MMT2 and (d) PLA/MMT4.





**Figure S3.** EDX color-mapping for PLA (first column) presentation of signal for Carbon (**a–d**) and Oxygen (**e–h**) (C-green, O-blue, respectively), PLA/MMT1 (second column), PLA/MMT2 (third column) and PLA/MMT4 (fourth column) showing the presence of C, O, Nitrogen (N-magenta (**i–k**)), Sodium (Na-purple (**l–n**)) and Magnesium (Mg-light blue (**o–q**)) Energy spectrum analysis of SEM.



**Figure S4.** DSC traces of neat PLA and PLA/MMT nanocomposites filaments during heating with 20 °C/min.

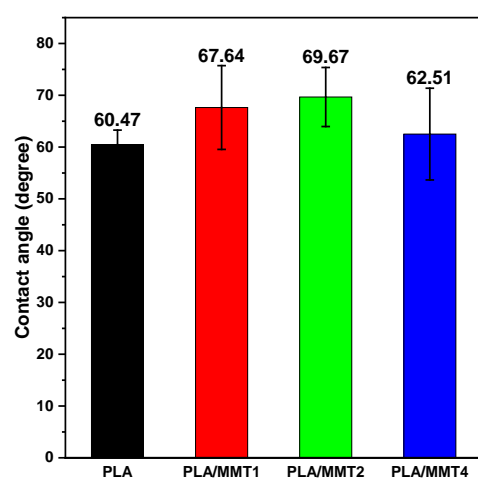


Figure S5. Water contact angle of PLA and PLA/MMT nanocomposites.