

# Transport and Retention of Poly(Acrylic Acid-co-Maleic Acid) Coated Magnetite Nanoparticles in Porous Media: Effect of Input Concentration, Ionic Strength and Grain Size

Rawan Mlih <sup>1,2,\*</sup>, Yan Liang <sup>3</sup>, Miaoyue Zhang <sup>4</sup>, Etelka Tombácz <sup>5</sup>, Roland Bol <sup>1,6</sup>  
and Erwin Klumpp <sup>1</sup>

<sup>1</sup> Institute of Bio- and Geosciences, Agrosphere (IBG-3), Research Centre Juelich (FZJ), 52425 Juelich, Germany; r.bol@fz-juelich.de (R.B.); e.klumpp@fz-juelich.de (E.K.)

<sup>2</sup> Institute for Environmental Research, Biology 5, RWTH Aachen University, 52074 Aachen, Germany

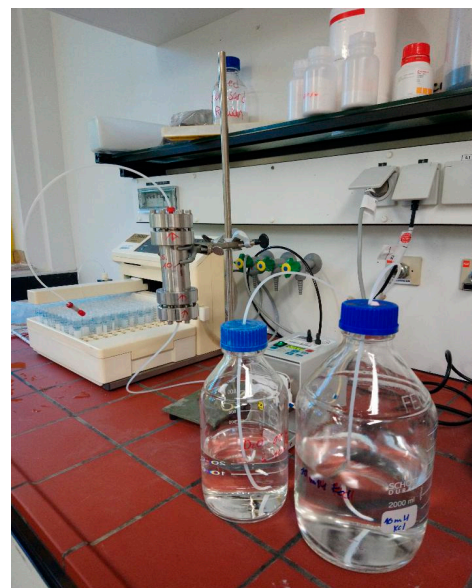
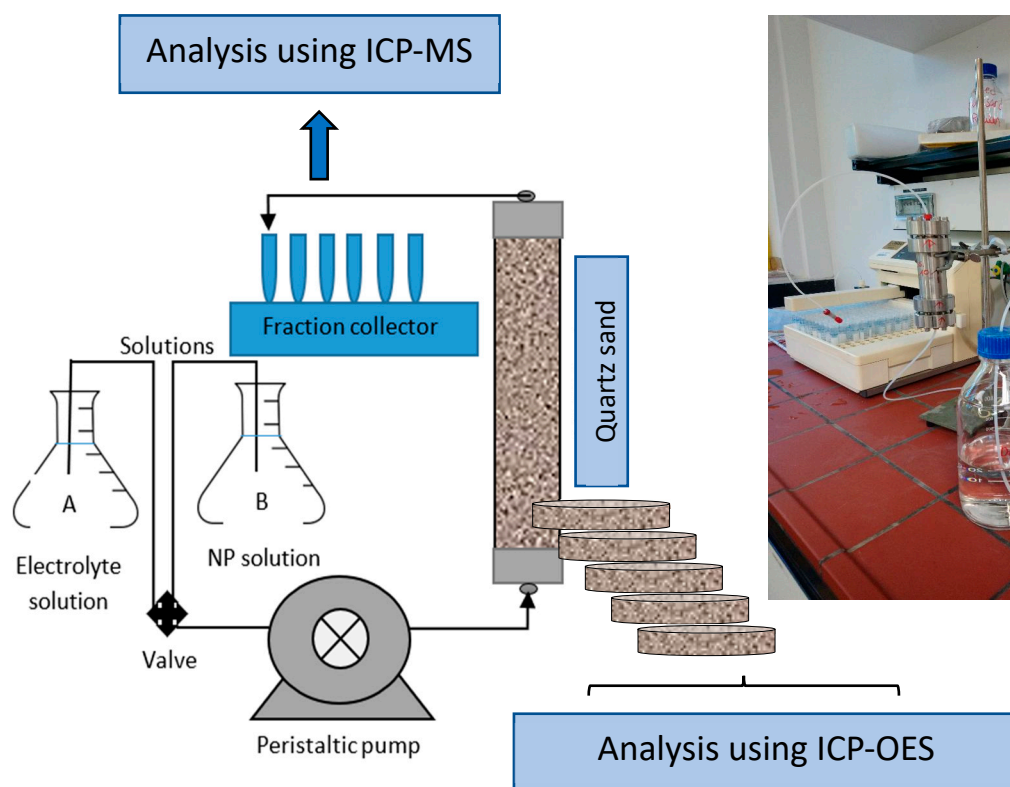
<sup>3</sup> School of Resources, Environment and Materials, Guangxi University, Nanning 530004, China; liangyan@gxu.edu.cn

<sup>4</sup> School of Environmental Science and Engineering, Sun Yat-sen University, Guangzhou 510006, China; zhangmy53@mail.sysu.edu.cn

<sup>5</sup> Soós Ernő Water Technology Research and Development Center, University of Pannonia, H-8800 Nagykanizsa, Hungary; e.tombacz@chem.u-szeged.hu

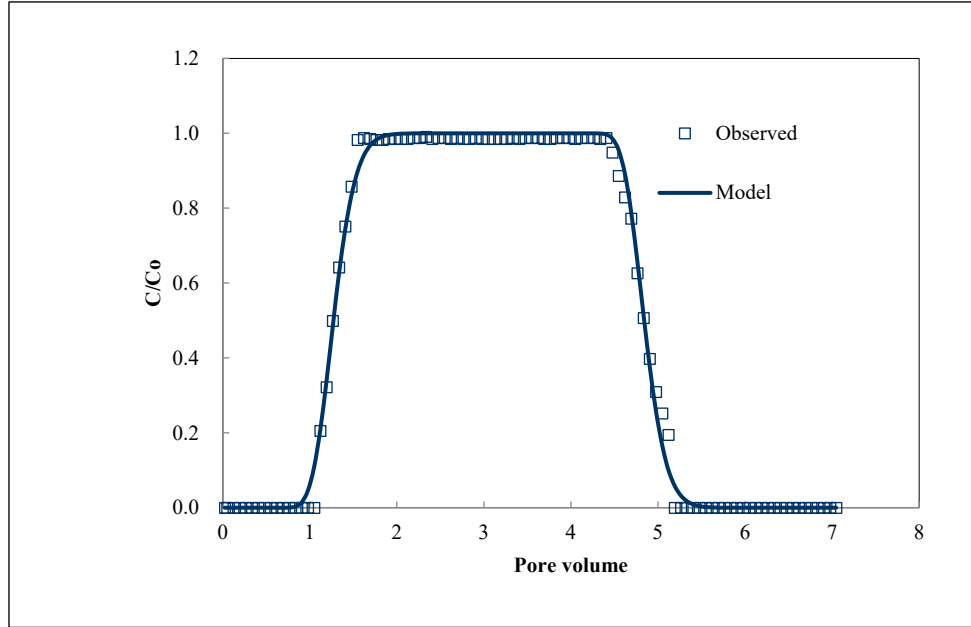
<sup>6</sup> School of Natural Sciences, Environment Centre Wales, Bangor University, Bangor LL57 2DG, UK

\* Correspondence: r.mlih@fz-juelich.de

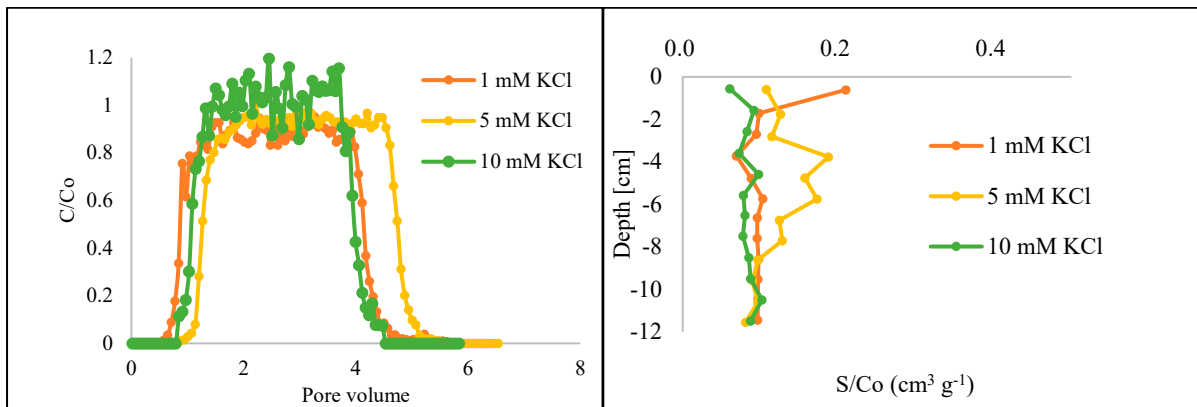


**Figure S1.**

**Figure S1.** Schematic diagram of water-saturated column set-up. Tracer, PAM@MNP and electrolyte solutions were separately pumped through the column in an upflow mode. A three-way valve was used to switch between the solutions.



**Figure S2.** Example of the BTC for D<sub>2</sub>O tracer. All BTCs for the tracer for all columns experiments presented the similar shapes.



**Figure S3.** Observed BTCs and RPs for PAM@MNP at 1, 5 and 10 mM. Initial concentration 5 mg L<sup>-1</sup>, Darcy velocity: 0.29 – 3.0 cm min<sup>-1</sup>.